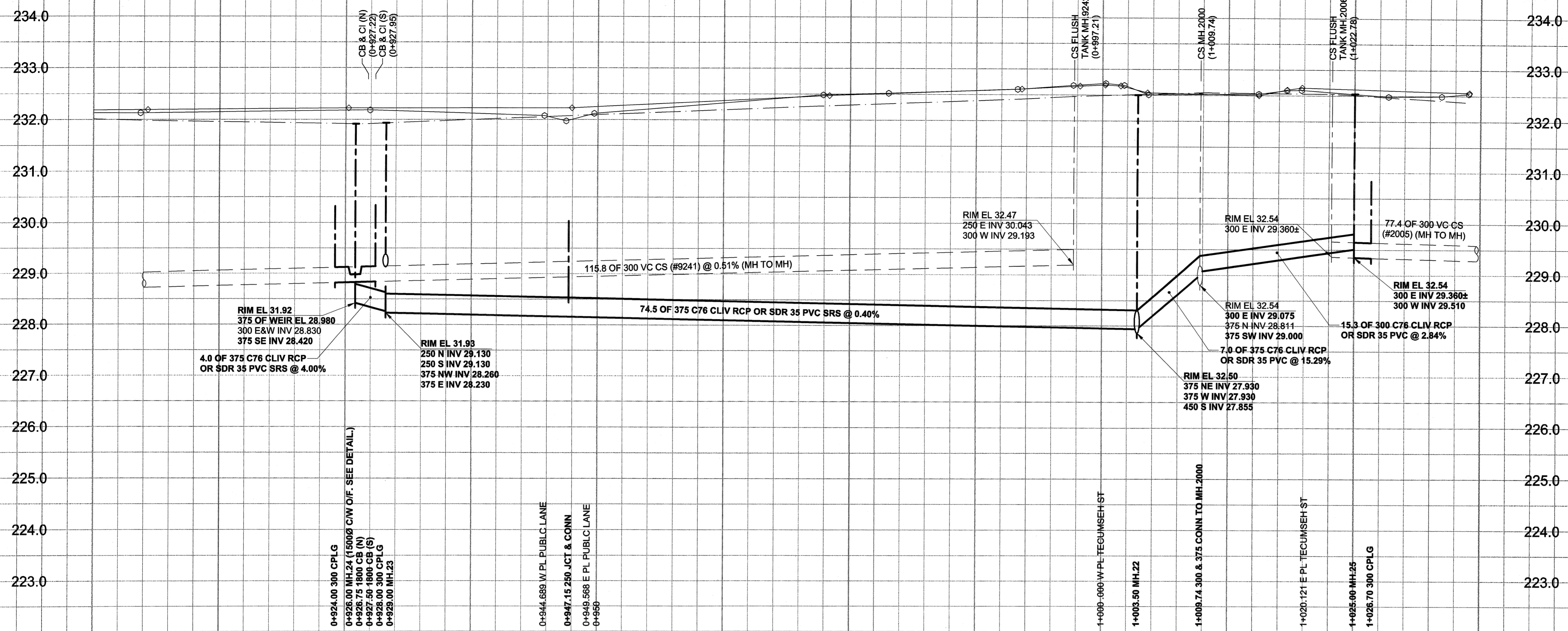


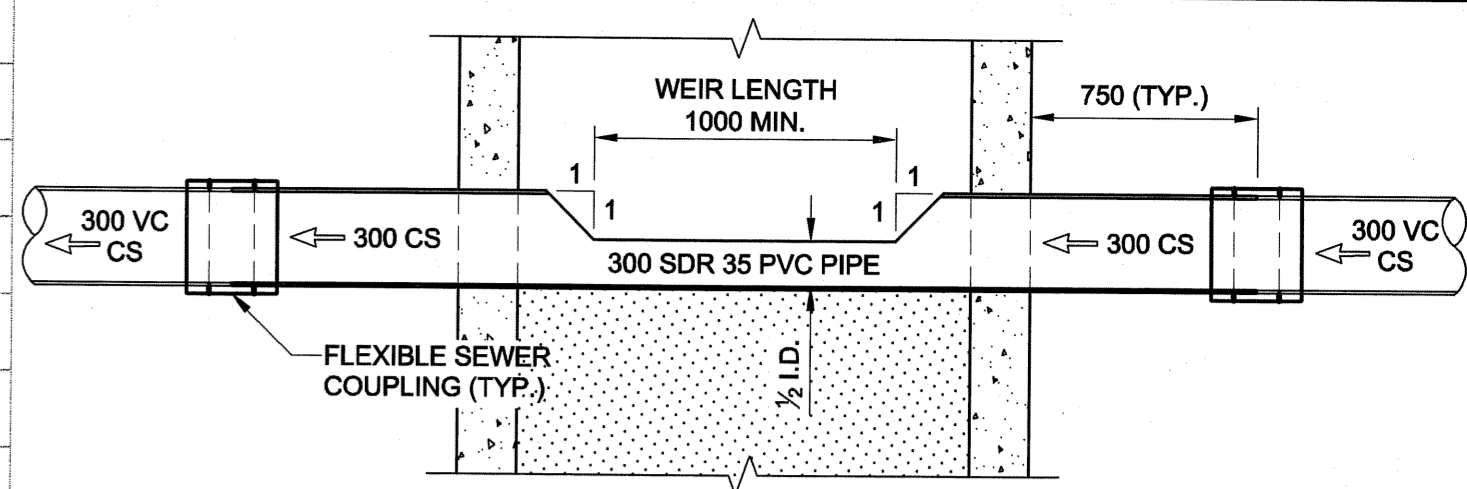
D SIZE 22" x 34" (559mm x 864mm)

PLOT: 05/02/08 4:27:54 PM

JMA FILE NAME: D265-177-01_01-C-1015_EX.dwg Saved By: aieippi

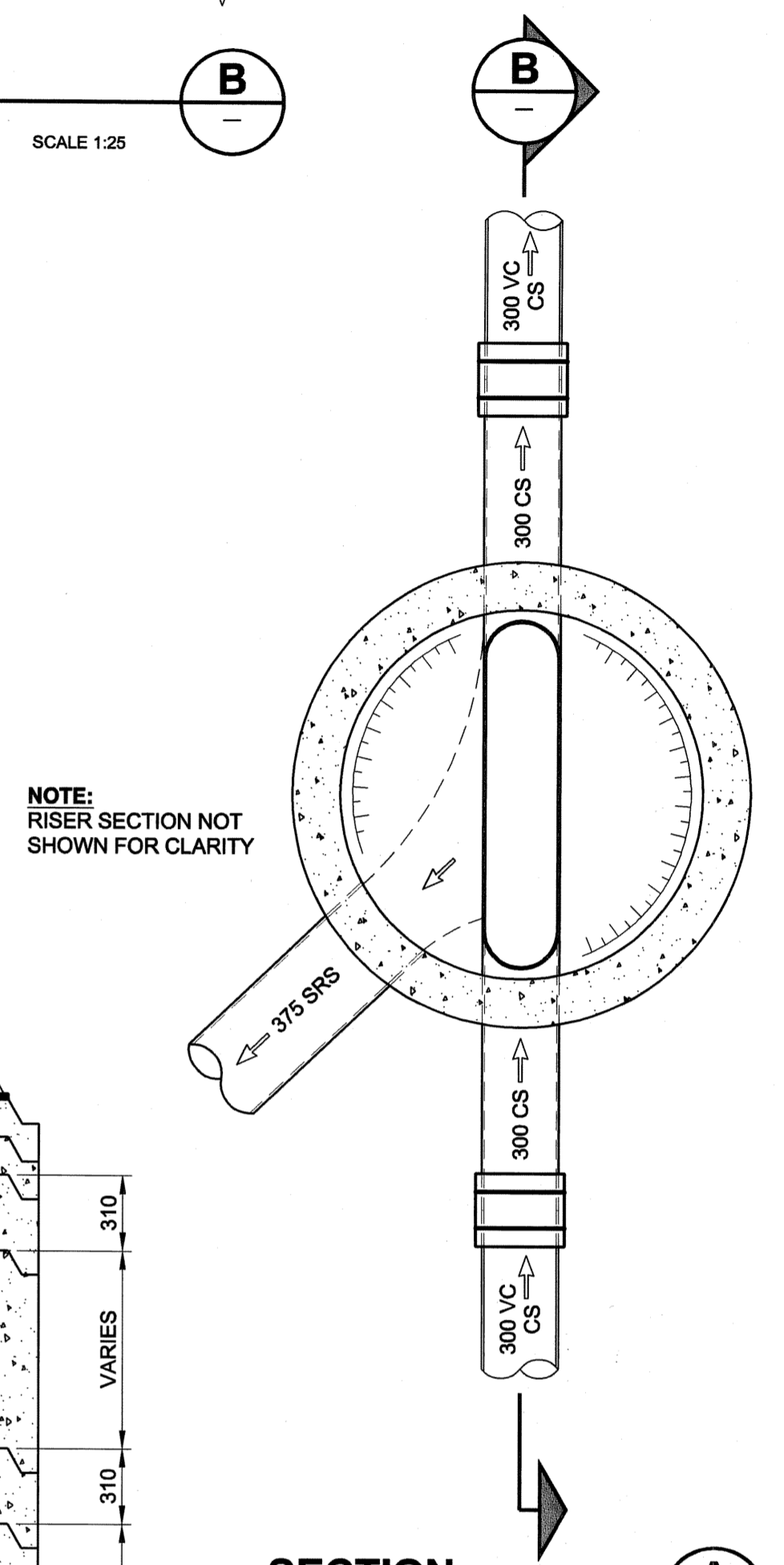


CHAINAGE ALONG S PL



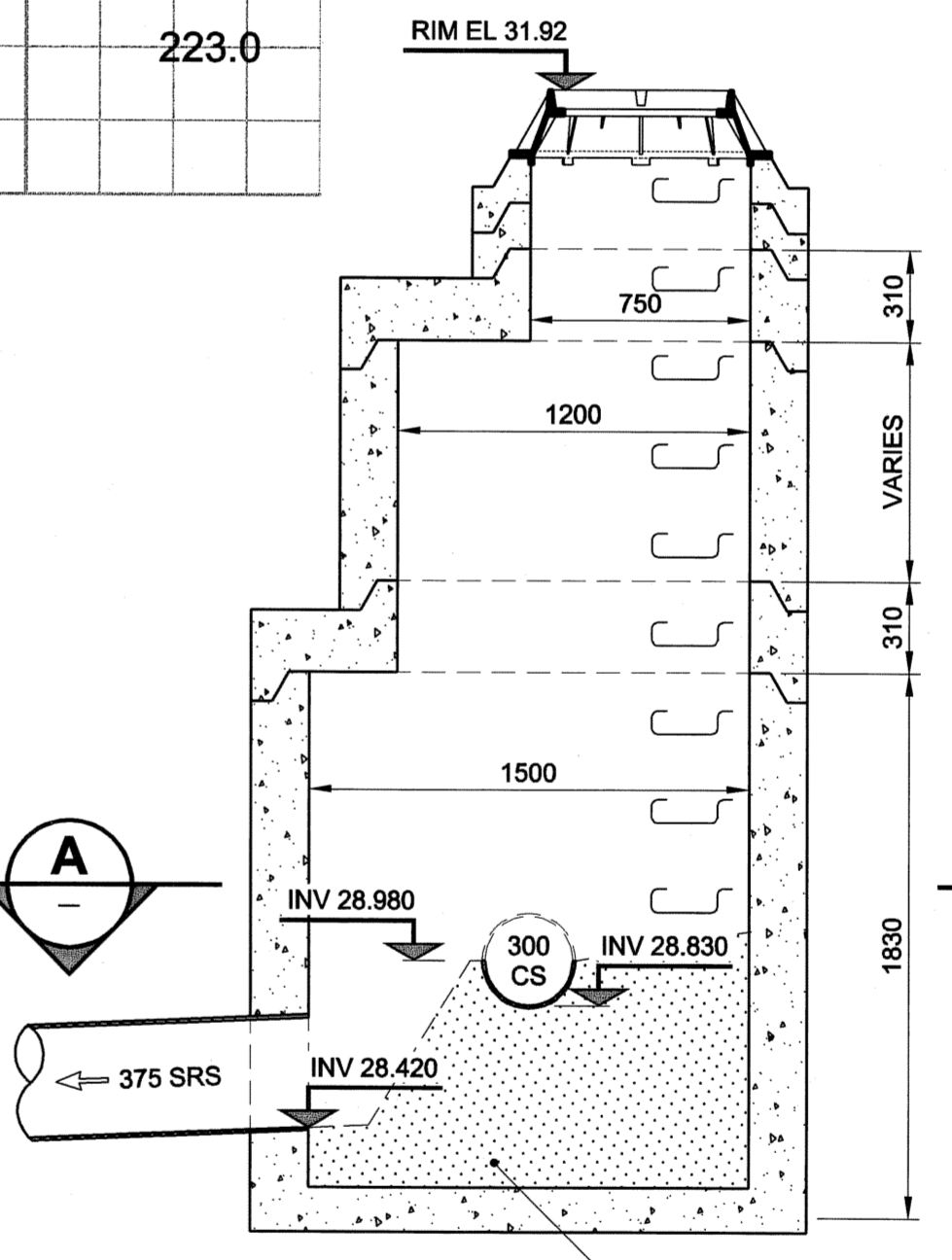
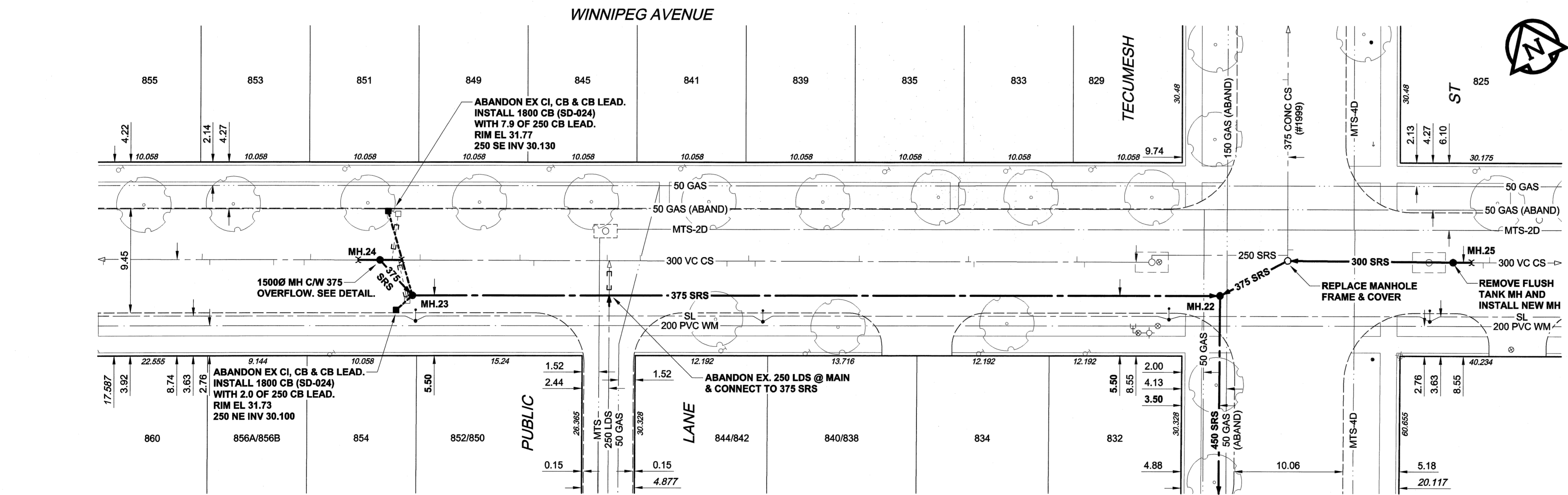
SECTION B

SCALE 1:25



SECTION A

SCALE 1:25



MANHOLE 24 OVERFLOW DETAIL

SCALE 1:25

TYPICAL MANHOLE REQUIREMENTS AS PER SD-010

- CONSTRUCTION NOTES:**
1. For detailed test hole information, see specification.
 2. The location of all services is to be confirmed in the field.
 3. Install new sewers and catchbasin leads by trenchless methods wherever possible.
 4. Renew/Rehabilitate catchbasins & renew catchbasin leads where noted.

WARNING
 IF POWER EQUIPMENT OR EXPLOSIVES ARE TO BE USED FOR EXCAVATION ON THIS PROJECT, THE CONTRACTOR MUST:
 1) NOTIFY THE GAS COMPANY OF THE PROPOSED LOCATION OF EXCAVATION.
 2) TAKE PRECAUTION TO AVOID DAMAGE TO GAS COMPANY INSTALLATIONS.
 SEE PROVINCIAL REGULATION 140/92 FOR DETAILS

FOR FURTHER INFO SEE DWG LD-3099

METRIC
 WHOLE NUMBERS INDICATE MILLIMETRES
 DECIMALIZED NUMBERS INDICATE METRES

APEGM
 Certificate of Authorization
 UMA Engineering Ltd.
 No. 256 Expiry: April 30, 2005

BID OPPORTUNITY NO. 12-2005

150 mm WM	WATERMAIN	150 mm WM	EXISTING	NEW	EXISTING	NEW	EXISTING	NEW
⊕	HYDRANT	⊕	---	---	---	---	---	---
⊕	VALVE	⊕	---	---	---	---	---	---
⊕	LAND DRAINAGE SEWER	⊕	---	---	---	---	---	---
⊕	WASTE WATER SEWER	⊕	---	---	---	---	---	---
⊕	MANHOLE	⊕	---	---	---	---	---	---
⊕	CATCH BASIN	⊕	---	---	---	---	---	---
⊕	CURB INLET	⊕	---	---	---	---	---	---
⊕	CULVERT	⊕	---	---	---	---	---	---
⊕	PIPE ABANDONMENTS	⊕	---	---	---	---	---	---
⊕	SURVEY BAR	⊕	---	---	---	---	---	---
⊕	EXISTING	⊕	---	---	---	---	---	---
⊕	LEGEND - PLAN	⊕	---	---	---	---	---	---

150 mm WM	WATERMAIN	150 mm WM	EXISTING	NEW	EXISTING	NEW
⊕	HYDRANT	⊕	---	---	---	---
⊕	VALVE	⊕	---	---	---	---
⊕	LAND DRAINAGE SEWER	⊕	---	---	---	---
⊕	WASTE WATER SEWER	⊕	---	---	---	---
⊕	PAVEMENT CROWN	⊕	---	---	---	---
⊕	N/W PROPERTY LINE	⊕	---	---	---	---
⊕	S/E PROPERTY LINE	⊕	---	---	---	---
⊕	N/W GUTTER	⊕	---	---	---	---
⊕	S/E GUTTER	⊕	---	---	---	---
⊕	EXISTING	⊕	---	---	---	---
⊕	LEGEND - PROFILE	⊕	---	---	---	---

LOCATION APPROVED
 UNDERGROUND STRUCTURES

SUPR. U/G STRUCTURES DATE COMMITTEE

NOTE:
 LOCATION OF UNDERGROUND STRUCTURES AS SHOWN ARE BASED ON THE BEST INFORMATION AVAILABLE. BUT NO GUARANTEE IS GIVEN THAT ALL EXISTING UTILITIES ARE SHOWN OR THAT THE GIVEN LOCATIONS ARE EXACT. CONFIRMATION OF EXISTENCE AND EXACT LOCATION OF ALL SERVICES MUST BE OBTAINED FROM THE INDIVIDUAL UTILITIES BEFORE PROCEEDING WITH CONSTRUCTION.

BM 96-045 ELEV 232.494m	S.E. Cor. Notre Dame Ave. & Beverley St., Tbl. in N. Conc. foundation No. 810 Notre Dame, 2m E. & 0.15m below brick of N.W. Cor. of Bldg.		
NO.	REVISIONS	DATE	BY
0	ISSUED FOR CONSTRUCTION	05/02/08	ADL

UMA An AECOM Company	
2004 UMA ENGINEERING LTD. ALL RIGHTS RESERVED.	
DESIGNED BY FMI/GEB	CHECKED BY [Signature]
DRAWN BY ADL	APPROVED BY [Signature]
HOR. SCALE 1:250	RELEASED FOR CONSTRUCTION [Signature]
VERT. SCALE 1:50	DATE 05/02/08

PROFESSIONAL'S SEAL
 PROVINCE OF MANITOBA
 REGISTERED PROFESSIONAL ENGINEER
 A. NAGY
 CONSULTANT DRAWING NO. 15
 D265-177-01

THE CITY OF WINNIPEG
WATER AND WASTE DEPARTMENT

ALEXANDER/BANNATYNE
COMBINED SEWER RELIEF
CONTRACT 1A
WINNIPEG AVENUE
 122m W OF ARLINGTON STREET
 TO TECUMSEH STREET

SHEET 15 OF 18
 CITY DRAWING NUMBER
 LD-3100
 REV 0