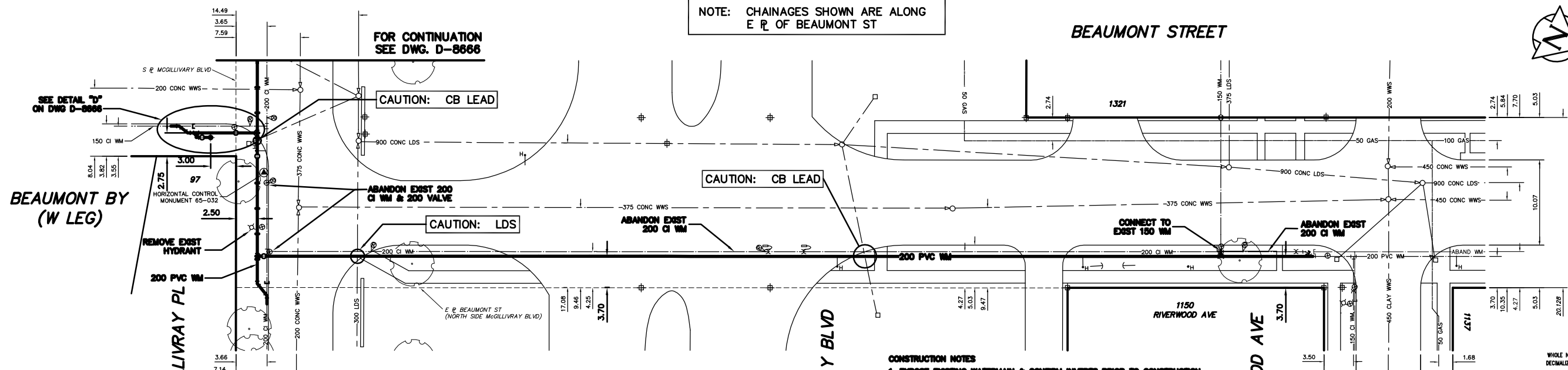


NOTE: CHAINAGES SHOWN ARE ALONG E R OF BEAUMONT ST

BEAUMONT STREET



WATER SERVICE INFORMATION

ADDRESS	SIZE STREET	SIZE PROP	SHORT & LONG MEASUREMENT	CORP LOCATION	REMARKS
97 BEAUMONT BAY RESIDENTIAL	25 COPPER	25 COPPER	10.06 S/NHL	12.50 SOF NHL	SERVICED FROM BEAUMONT
1321 BEAUMONT ST RESIDENTIAL	-	-	-	-	NO INFORMATION AVAILABLE IN PANEL 10 OR HOUSEFILES
1150 RIVERWOOD AVE RESIDENTIAL	20 COPPER	20 COPPER	1.80 W/EHL 10.97 EEL BEAUMONT	0.49 E OF SC	WATERMAIN RENEWAL JUNE/99 SERVICED FROM RIVERWOOD

*SERVICES TO BE RENEWED TO R ALL OTHERS TO BE RECONNECTED

- CONSTRUCTION NOTES**
1. EXPOSE EXISTING WATERMAIN & CONFIRM INVERTS PRIOR TO CONSTRUCTION.
 2. LOCATION OF ALL SERVICES TO BE CONFIRMED IN THE FIELD.
 3. INSTALL WATERMAIN BY TRENCHLESS METHODS.
 4. TRENCHES AND EXCAVATIONS WITHIN 1 METRE OF A PAVED AREA INCLUDING SIDEWALKS SHALL BE CLASS 3 BACKFILL.
 5. ALL MATERIALS SHALL CONFORM TO THE CITY OF WINNIPEG STANDARD CONSTRUCTION SPECIFICATIONS.
 6. MINIMUM COVER TO TOP OF WATERMAIN SHALL BE 2.4 m.
 7. REPLACE ALL EXISTING LEAD SERVICES FROM PROPOSED WATERMAIN TO R.
 8. NOTIFY ALL AFFECTED RESIDENTS AND BUSINESSES 24 HOURS IN ADVANCE OF ANY WATER SHUTDOWNS OR DISRUPTION OF SERVICE.

METRIC
WHOLE NUMBERS INDICATE MILLIMETRES
DECIMALIZED NUMBERS INDICATE METRES

NOTE: ALL VALVES TO BE INSTALLED COUNTERCLOCKWISE TO CLOSE

WARNING

IF POWER EQUIPMENT OR EXPLOSIVES ARE TO BE USED FOR EXCAVATION ON THIS PROJECT THE CONTRACTOR MUST:
1) NOTIFY THE GAS COMPANY OF THE PROPOSED LOCATION OF EXCAVATION.
2) TAKE PRECAUTION TO AVOID DAMAGE TO GAS COMPANY INSTALLATIONS.
SEE PROVINCIAL REGULATION 210/72 FOR DETAILS

EXISTING	LEGEND-PLAN	PROPOSED	EXISTING	LEGEND-PLAN	PROPOSED	EXISTING	LEGEND-PROFILE	PROPOSED
200 WM	WATERMAIN	200 WM	SL, HYDRO	150 WM	WATERMAIN	150 WM	WATERMAIN	150 WM
HYDRANT	HYDRANT	HYDRANT	MTS	HYDRANT	HYDRANT	HYDRANT	HYDRANT	HYDRANT
VALVE	VALVE	VALVE	TRAFFIC SIGNALS	TRAFFIC SIGNALS	TRAFFIC SIGNALS	TRAFFIC SIGNALS	TRAFFIC SIGNALS	TRAFFIC SIGNALS
525 LDS	LAND DRAINAGE SEWER	525 LDS	GAS	50 GAS	50 GAS	50 GAS	50 GAS	50 GAS
375 WWS	WASTEWATER SEWER	375 WWS	SURVEY BAR	250 WWS	250 WWS	250 WWS	250 WWS	250 WWS
MANHOLE	MANHOLE	MANHOLE	FENCE	FENCE	FENCE	FENCE	FENCE	FENCE
CATCH BASIN	CATCH BASIN	CATCH BASIN	POLE - HYDRO, MTS	POLE - HYDRO, MTS	POLE - HYDRO, MTS	POLE - HYDRO, MTS	POLE - HYDRO, MTS	POLE - HYDRO, MTS
CURB INLET	CURB INLET	CURB INLET	CURB STOP	CURB STOP	CURB STOP	CURB STOP	CURB STOP	CURB STOP
REDUCER	REDUCER	REDUCER	GUY ANCHOR	GUY ANCHOR	GUY ANCHOR	GUY ANCHOR	GUY ANCHOR	GUY ANCHOR
COUPLER	COUPLER	COUPLER	LIGHT STANDARD	LIGHT STANDARD	LIGHT STANDARD	LIGHT STANDARD	LIGHT STANDARD	LIGHT STANDARD
ANODE	ANODE	ANODE	TREE	TREE	TREE	TREE	TREE	TREE

LOCATION APPROVED UNDERGROUND STRUCTURES

SUPV. U/G STRUCTURES COMMITTEE

DATE

NOTE:
LOCATION OF UNDERGROUND STRUCTURES AS SHOWN ARE BASED ON THE BEST INFORMATION AVAILABLE BUT NO GUARANTEE IS GIVEN THAT ALL EXISTING UTILITIES ARE SHOWN OR THAT THE GIVEN LOCATIONS ARE EXACT. CONFIRMATION OF EXISTENCE AND EXACT LOCATION OF ALL SERVICES MUST BE OBTAINED FROM THE INDIVIDUAL UTILITIES BEFORE PROCEEDING WITH CONSTRUCTION.

CITY OF WINNIPEG
WATER AND WASTE
ENGINEERING DIVISION

DESIGNED BY: SC
DRAWN BY: CJH/BW
HOR. SCALE: 1:250
VERTICAL: 1:50
DATE: 2005 03 18

CHECKED BY: KZ
APPROVED BY: KZ
RELEASED FOR CONSTRUCTION

ENGINEER'S SEAL

ORIGINAL SIGNED BY K.R. ZUREK
05/03/18

BID OPPORTUNITY: 135-2005
FILENAME: D-8662_05_06.dwg
PLOT DATE: 2005 03 21

THE CITY OF WINNIPEG
WATER AND WASTE DEPARTMENT

2005 WATERMAIN RENEWALS

BEAUMONT STREET
SOUTH SIDE MCGILLIVRAY PLACE TO
RIVERWOOD AVENUE

SHEET 1 OF 18
CITY DRAWING NUMBER
D-8662