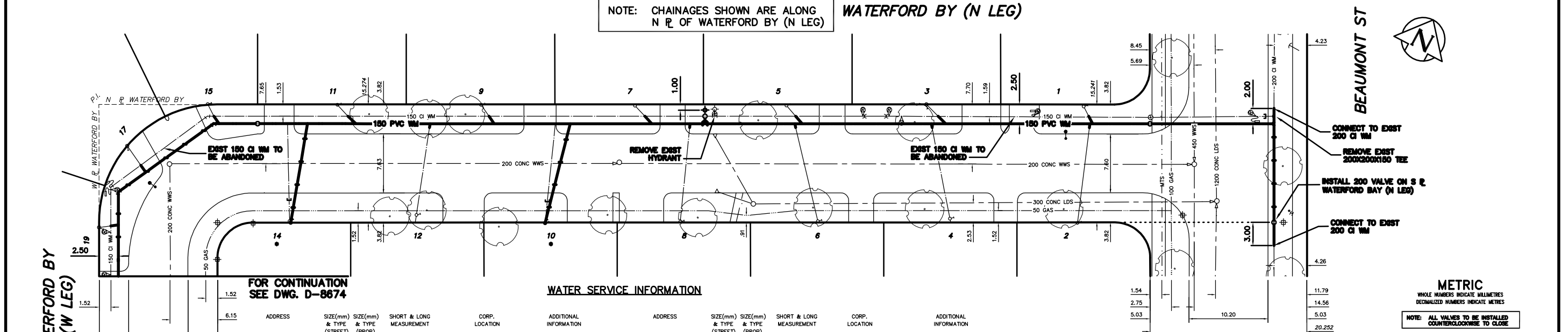


NOTE: CHAINAGES SHOWN ARE ALONG WATERFORD BY (N LEG)
N R OF WATERFORD BY (N LEG)



FOR CONTINUATION
SEE DWG. D-8674

WATER SERVICE INFORMATION

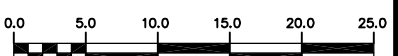
ADDRESS	SIZE(mm) & TYPE (STREET)	SIZE(mm) & TYPE (PROP)	SHORT & LONG MEASUREMENT	CORP. LOCATION	ADDITIONAL INFORMATION	ADDRESS	SIZE(mm) & TYPE (STREET)	SIZE(mm) & TYPE (PROP)	SHORT & LONG MEASUREMENT	CORP. LOCATION	ADDITIONAL INFORMATION
1 WATERFORD BAY RESIDENTIAL	-	-	5.79 EWHL	9.14 W MV @ BEAUMONT ST	14.45 W MH @ BEAUMONT ST	9 WATERFORD BAY RESIDENTIAL	20 COPPER	20 COPPER	7.83 WEPL	86.08 W MV @ BEAUMONT ST	17.31 W MH OPP 7 WATERFORD BAY
2 WATERFORD BAY RESIDENTIAL	-	-	10.67 EWPL	9.02 W MV @ BEAUMONT ST	14.02 W MH @ BEAUMONT ST	10 WATERFORD BAY RESIDENTIAL	-	-	7.83 EWPL	78.09 W MV @ BEAUMONT ST	9.69 W MH OPP 7 WATERFORD BAY
3 WATERFORD BAY RESIDENTIAL	-	-	4.88 WEHL	28.74 W MV @ BEAUMONT ST	33.53 W MH @ BEAUMONT ST	11 WATERFORD BAY RESIDENTIAL	-	-	9.14 WEPL	104.97 W MV @ BEAUMONT ST	21.18 E MH OPP 17 WATERFORD BAY
4 WATERFORD BAY RESIDENTIAL	-	-	5.79 EWHL	29.72 W MV @ BEAUMONT ST	31.55 W MH @ BEAUMONT ST	12 WATERFORD BAY RESIDENTIAL	-	-	7.93 EWPL	94.18 W MV @ BEAUMONT ST	30.82 E MH OPP 17 WATERFORD BAY
5 WATERFORD BAY RESIDENTIAL	-	-	9.27 WEPL	47.24 W MV @ BEAUMONT ST	53.04 W MH @ BEAUMONT ST	13 WATERFORD BAY RESIDENTIAL	-	-	8.23 WEPL	112.78 W MV @ BEAUMONT ST	4.48 E MH OPP 17 WATERFORD BAY
6 WATERFORD BAY RESIDENTIAL	-	-	8.84 WEPL	47.43 W MV @ BEAUMONT ST	48.46 W MH @ BEAUMONT ST	14 WATERFORD BAY RESIDENTIAL	-	-	6.71 WEPL	122.29 W MV @ BEAUMONT ST	78.18 N MH @ 5 LEG WATERFORD BAY
7 WATERFORD BAY RESIDENTIAL	-	-	8.23 EWPL	66.75 W MV @ BEAUMONT ST	1.92 E MH OPP 7 WATERFORD BAY	15 WATERFORD BAY RESIDENTIAL	-	-	5.79 NSPL	35.39 N HYD OPP 23 WATERFORD BY	5 LEG WATERFORD BAY
8 WATERFORD BAY RESIDENTIAL	-	-	9.30 WEPL	60.72 W MV @ BEAUMONT ST	7.31 E MH OPP 7 WATERFORD BAY	16 WATERFORD BAY RESIDENTIAL	-	-	9.08 NSHL	27.43 N HYD OPP 23 WATERFORD BY	5 LEG WATERFORD BAY
9 WATERFORD BAY RESIDENTIAL	-	-	2.80 WEPL	-	-	17 WATERFORD BAY RESIDENTIAL	-	-	9.45 NSPL	-	-

*SERVICES TO BE RENEWED TO R ALL OTHERS TO BE RECONNECTED

- CONSTRUCTION NOTES**
1. EXPOSE EXISTING WATERMAIN & CONFIRM INVERTS PRIOR TO CONSTRUCTION.
 2. LOCATION OF ALL SERVICES TO BE CONFIRMED IN THE FIELD.
 3. INSTALL WATERMAIN BY TRENCHLESS METHODS.
 4. TRENCHES AND EXCAVATIONS WITHIN 1 METRE OF A PAVED AREA INCLUDING SIDEWALKS SHALL BE CLASS 3 BACKFILL.
 5. ALL MATERIALS SHALL CONFORM TO THE CITY OF WINNIPEG STANDARD CONSTRUCTION SPECIFICATIONS.
 6. MINIMUM COVER TO TOP OF WATERMAIN SHALL BE 2.4 m.
 7. REPLACE ALL EXISTING LEAD SERVICES FROM PROPOSED WATERMAIN TO R.
 8. NOTIFY ALL AFFECTED RESIDENTS AND BUSINESSES 24 HOURS IN ADVANCE OF ANY WATER SHUTDOWNS OR DISRUPTION OF SERVICE.

METRIC
WHOLE NUMBERS INDICATE MILLIMETRES
DECIMALIZED NUMBERS INDICATE METRES
NOTE: ALL VALVES TO BE INSTALLED
COUNTERCLOCKWISE TO CLOSE

WARNING
IF POWER EQUIPMENT OR EXPLOSIVES ARE TO BE USED FOR EXCAVATION ON THIS PROJECT THE CONTRACTOR MUST:
1) NOTIFY THE GAS COMPANY OF THE PROPOSED LOCATION OF EXCAVATION.
2) TAKE PRECAUTION TO AVOID DAMAGE TO GAS COMPANY INSTALLATIONS.
SEE PROVINCIAL REGULATION 210/72 FOR DETAILS



EXISTING	LEGEND-PLAN	PROPOSED	EXISTING	LEGEND-PLAN	PROPOSED	EXISTING	LEGEND-PROFILE	PROPOSED
200 WM	WATERMAIN	200 WM	SL	HYDRO	150 WM	WATERMAIN	150 WM	WATERMAIN
525 LDS	LAND DRAINAGE SEWER	525 LDS	MTS	TRAFFIC SIGNALS	300 LDS	HYDRANT	300 LDS	HYDRANT
375 WWS	WASTEWATER SEWER	375 WWS	GAS	GAS	250 WWS	VALVE	250 WWS	VALVE
○	MANHOLE	○	SURVEY BAR	SURVEY BAR	○	○ PROFILE	○	○ PROFILE
□	CATCH BASIN	□	FENCE	FENCE	△	△ PROFILE	△	△ PROFILE
▽	CURB INLET	▽	POLE - HYDRO, MTS	POLE - HYDRO, MTS	△	△ PROFILE	△	△ PROFILE
▽	REDUCER	▽	CURB STOP	CURB STOP	△	△ PROFILE	△	△ PROFILE
X	COUPLER	X	GUY ANCHOR	GUY ANCHOR	△	△ PROFILE	△	△ PROFILE
○	ANODE	○	LIGHT STANDARD	LIGHT STANDARD	△	△ PROFILE	△	△ PROFILE
○	LEGEND-PLAN	○	TREE	TREE	△	△ PROFILE	△	△ PROFILE
○	PROPOSED	○	LEGEND-PLAN	PROPOSED	△	LEGEND-PROFILE	△	PROPOSED

LOCATION APPROVED UNDERGROUND STRUCTURES	DATE	B.M. ELEV.	FIELD BOOK #
SUPV. U/G STRUCTURES COMMITTEE			
POSTED TO LISB			
NO. REVISIONS	DATE	BY	

CITY OF WINNIPEG
WATER AND WASTE
ENGINEERING DIVISION

DESIGNED BY: SC
DRAWN BY: BW
HOR. SCALE: 1:250
VERTICAL: 1:50
DATE: 2005 03 18

CHECKED BY: KZ
APPROVED BY: KZ
RELEASED FOR CONSTRUCTION: DATE

ENGINEER'S SEAL
ORIGINAL SIGNED BY K.R. ZUREK
05/03/18

THE CITY OF WINNIPEG
WATER AND WASTE DEPARTMENT

2005 WATERMAIN RENEWALS
WATERFORD BAY (W LEG) TO BEAUMONT STREET

SHEET 14 OF 18
CITY DRAWING NUMBER
D-8675

BID OPPORTUNITY: 135-2005
FILENAME: D-8674_D-8675.dwg
PLOT DATE: 2005 03 21