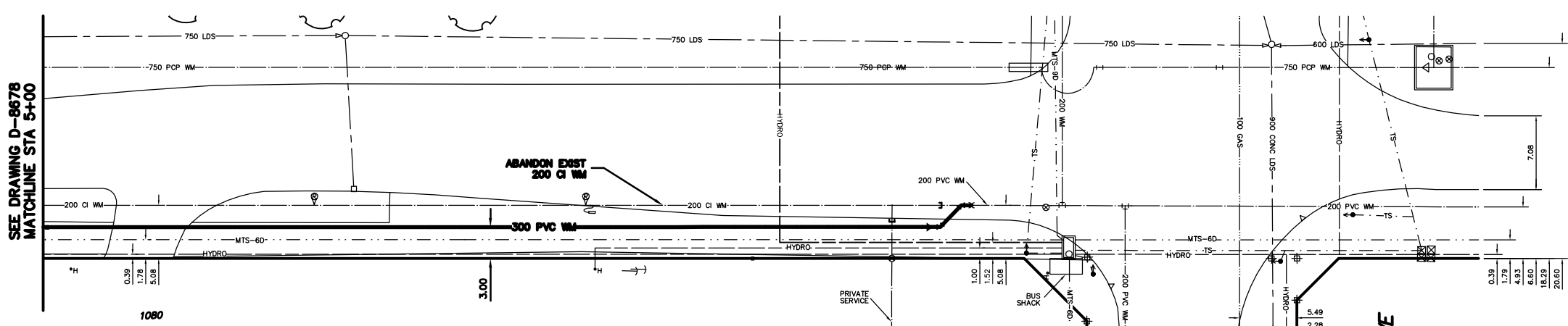


NOTE: CHAINAGES SHOWN ARE ALONG E. R. OF WAVERLEY ST



- CONSTRUCTION NOTES**
1. EXPOSE EXISTING WATERMAIN & CONFIRM INVERTS PRIOR TO CONSTRUCTION.
  2. LOCATION OF ALL SERVICES TO BE CONFIRMED IN THE FIELD.
  3. INSTALL WATERMAIN BY TRENCHLESS METHODS.
  4. TRENCHES AND EXCAVATIONS WITHIN 1 METRE OF A PAVED AREA INCLUDING SIDEWALKS SHALL BE CLASS 3 BACKFILL.
  5. ALL MATERIALS SHALL CONFORM TO THE CITY OF WINNIPEG STANDARD CONSTRUCTION SPECIFICATIONS.
  6. MINIMUM COVER TO TOP OF WATERMAIN SHALL BE 2.4 m.
  7. REPLACE ALL EXISTING LEAD SERVICES FROM PROPOSED WATERMAIN TO E.
  8. NOTIFY ALL AFFECTED RESIDENTS AND BUSINESSES 24 HOURS IN ADVANCE OF ANY WATER SHUTDOWNS OR DISRUPTION OF SERVICE.

**WAVERLEY STREET**



**WATER SERVICE INFORMATION**

ADDRESS	SIZE(mm) & TYPE (STREET)	SIZE(mm) & TYPE (PROP)	SHORT & LONG MEASUREMENT	CORP. LOCATION	REMARKS
1080 WAVERLEY ST RESIDENTIAL	20 COPPER	20 COPPER	4.11 EEL BLDG	-	SERV. OFF SEEL
1038 WAVERLEY ST COMMERCIAL	200 PVC	200 PVC	16.76 E HYD SEEL 1 E WAV.	OPP S/C	SERV. OFF SEEL

• SERVICES TO BE RENEWED TO R ALL OTHERS TO BE RECONNECTED

FOR CONTINUATION SEE DRAWING D-8670

**METRIC**  
WHOLE NUMBERS INDICATE MILLIMETRES  
DECIMALIZED NUMBERS INDICATE METRES

NOTE: ALL VALVES TO BE INSTALLED COUNTERCLOCKWISE TO CLOSE

**WARNING**  
IF POWER EQUIPMENT OR EXPLOSIVES ARE TO BE USED FOR EXCAVATION ON THIS PROJECT THE CONTRACTOR MUST:  
1) NOTIFY THE GAS COMPANY OF THE PROPOSED LOCATION OF EXCAVATION.  
2) TAKE PRECAUTION TO AVOID DAMAGE TO GAS COMPANY INSTALLATIONS.  
SEE PROVINCIAL REGULATION 210/72 FOR DETAILS



200 WM	WATERMAIN	200 WM	SL, HYDRO	150 WM	WATERMAIN	150 WM
⊕	HYDRANT	⊕	MTS	⊕	HYDRANT	⊕
⊙	VALVE	⊙	TRAFFIC SIGNALS	⊙	VALVE	⊙
525 LDS	LAND DRAINAGE SEWER	525 LDS	GAS	50 GAS	300 LDS	LAND DRAINAGE SEWER
375 WWS	WASTEWATER SEWER	375 WWS	SURVEY BAR	250 WWS	250 WWS	WASTEWATER SEWER
○	MANHOLE	○	FENCE	⊕	⊕	PROFILE
□	CATCH BASIN	□	POLE - HYDRO, MTS	⊕	⊕	GROUND ABOVE PIPE
▽	CURB INLET	▽	CURB STOP	⊕	⊕	
∇	REDUCER	∇	GUY ANCHOR			
X	COUPLING	X	LIGHT STANDARD			
⊕	ANODE	⊕	TREE			
EXISTING	LEGEND-PLAN	PROPOSED	EXISTING	LEGEND-PLAN	PROPOSED	EXISTING

**LOCATION APPROVED UNDERGROUND STRUCTURES**

SUPV. U/O STRUCTURES COMMITTEE	DATE

NOTE:  
LOCATION OF UNDERGROUND STRUCTURES AS SHOWN ARE BASED ON THE BEST INFORMATION AVAILABLE BUT NO GUARANTEE IS GIVEN THAT ALL EXISTING UTILITIES ARE SHOWN OR THAT THE GIVEN LOCATIONS ARE EXACT. CONFIRMATION OF EXISTENCE AND EXACT LOCATION OF ALL SERVICES MUST BE OBTAINED FROM THE INDIVIDUAL UTILITIES BEFORE PROCEEDING WITH CONSTRUCTION.

**CITY OF WINNIPEG WATER AND WASTE ENGINEERING DIVISION**

DESIGNED BY: SC	CHECKED BY: KZ
DRAWN BY: CJH	APPROVED BY: KZ
HOR. SCALE: 1:250	RELEASED FOR CONSTRUCTION
VERTICAL SCALE: 1:50	DATE: 2005 03 18

ENGINEER'S SEAL  
**ORIGINAL SIGNED BY K.R. ZUREK 05/03/18**

**THE CITY OF WINNIPEG WATER AND WASTE DEPARTMENT**

2005 WATERMAIN RENEWALS

**WAVERLEY STREET**  
100 m S OF S R SEEL AVENUE TO SEEL AVENUE

SHEET 18 OF 18  
CITY DRAWING NUMBER  
D-8679

BID OPPORTUNITY: 135-2005  
FILENAME: D-8679\_D-8679.dwg  
PLOT DATE: 2005 03 21