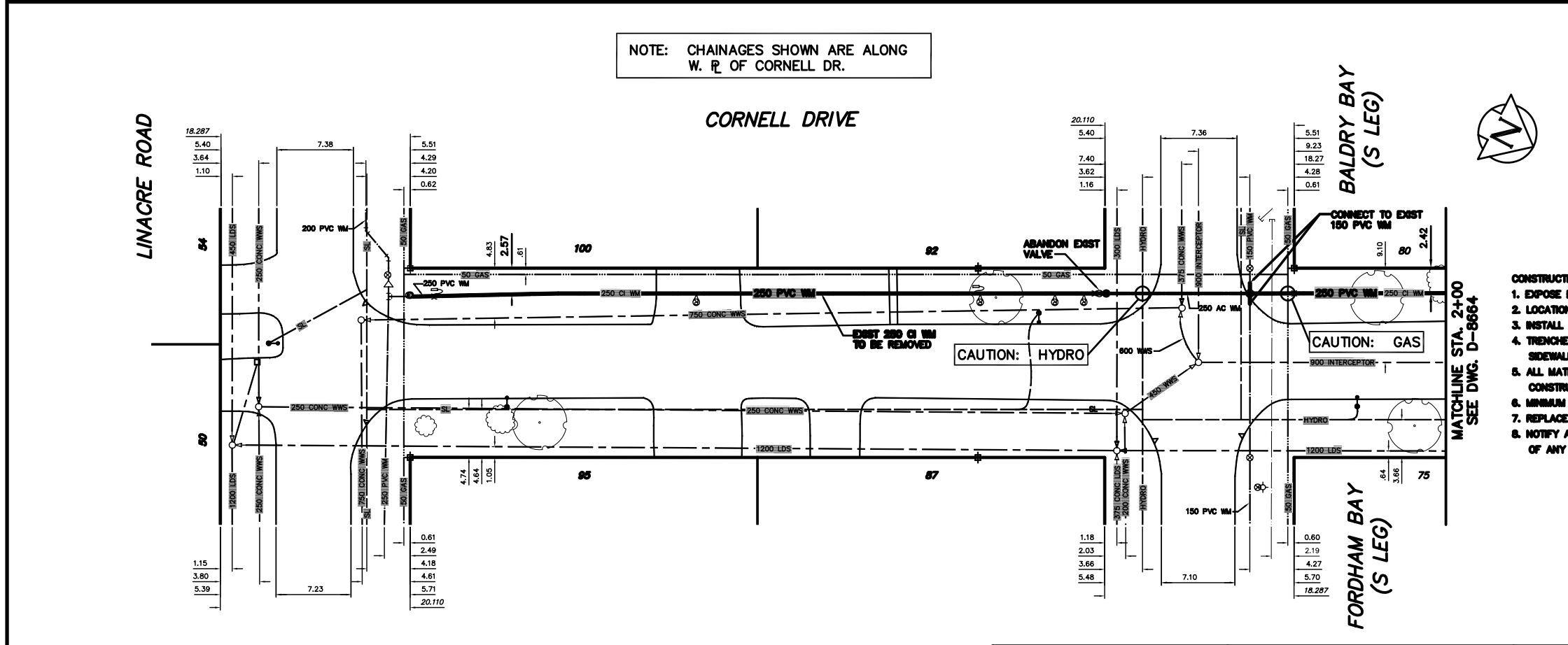


NOTE: CHAINAGES SHOWN ARE ALONG W. R. OF CORNELL DR.

WATER SERVICE INFORMATION

ADDRESS	SIZE(mm)	SIZE(mm) & TYPE (STREET)	SHORT & LONG MEASUREMENT (PROP)	CORP. LOCATION	REMARKS
75 CORNELL DR RESIDENTIAL	19	19	4.88 EWL HSE	-	SERV. OFF CORNELL
80 CORNELL DR RESIDENTIAL	19	19	7.92 OUT FROM HSE	0.32 E OF S/C	SERV. OFF BALDRY
87 CORNELL DR RESIDENTIAL	19	19	4.86 EWL HSE	0.33 E OF S/C	SERV. OFF FORDHAM
92 CORNELL DR RESIDENTIAL	19	19	8.23 OUT FROM HSE	0.34 E OF S/C	SERV. OFF BALDRY
95 CORNELL DR RESIDENTIAL	19	19	4.0 EWL HSE	0.76 W OF S/C	SERV. OFF LINACRE
100 CORNELL DR RESIDENTIAL	19	19	66.70 E HYD @ #3 BALDRY	0.05 E OF S/C	SERV. OFF LINACRE
50 LINACRE RD RESIDENTIAL	19	19	5.46 W/EL GARAGE	5.06 E OF S/C	SERV. OFF LINACRE
54 LINACRE RD RESIDENTIAL	19	19	66.20 E HYD @ #82/86	6.40 W OF S/C	SERV. OFF LINACRE
	19	19	3.41 W/EHL	-	-
	19	19	9.57 EEL CORNELL	-	-
	19	19	4.39 W/EHL	-	-
	19	19	9.39 WML CORNELL	-	-
	19	19	6.71 E/AHL	-	-
	19	19	3.23 WEL CORNELL	-	-
	19	19	7.71 W/EHL	-	-
	19	19	1.95 WML CORNELL	-	-

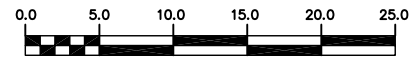
• SERVICES TO BE RENEWED TO R. ALL OTHERS TO BE RECONNECTED



- CONSTRUCTION NOTES**
1. EXPOSE EXISTING WATERMAIN & CONFIRM INVERTS PRIOR TO CONSTRUCTION.
 2. LOCATION OF ALL SERVICES TO BE CONFIRMED IN THE FIELD.
 3. INSTALL WATERMAIN BY TRENCHLESS METHODS.
 4. TRENCHES AND EXCAVATIONS WITHIN 1 METRE OF A PAVED AREA INCLUDING SIDEWALKS SHALL BE CLASS 3 BACKFILL.
 5. ALL MATERIALS SHALL CONFORM TO THE CITY OF WINNIPEG STANDARD CONSTRUCTION SPECIFICATIONS.
 6. MINIMUM COVER TO TOP OF WATERMAIN SHALL BE 2.4 m.
 7. REPLACE ALL EXISTING LEAD SERVICES FROM PROPOSED WATERMAIN TO R.
 8. NOTIFY ALL AFFECTED RESIDENTS AND BUSINESSES 24 HOURS IN ADVANCE OF ANY WATER SHUTDOWNS OR DISRUPTION OF SERVICE.

METRIC
WHOLE NUMBERS INDICATE MILLIMETRES
DECIMALIZED NUMBERS INDICATE METRES
NOTE: ALL VALVES TO BE INSTALLED CLOCKWISE TO CLOSE

WARNING
IF POWER EQUIPMENT OR EXPLOSIVES ARE TO BE USED FOR EXCAVATION ON THIS PROJECT THE CONTRACTOR MUST:
1) NOTIFY THE GAS COMPANY OF THE PROPOSED LOCATION OF EXCAVATION.
2) TAKE PRECAUTION TO AVOID DAMAGE TO GAS COMPANY INSTALLATIONS.
SEE PROVINCIAL REGULATION 210/72 FOR DETAILS



200 WM	WATERMAIN	200 WM	SL, HYDRO	150 WM	WATERMAIN	150 WM
+	HYDRANT	+	MTS	+	HYDRANT	+
o	VALVE	o	TRAFFIC SIGNALS	+	VALVE	+
---	525 LDS LAND DRAINAGE SEWER	---	GAS	---	50 GAS	---
---	375 WWS WASTEWATER SEWER	---	SURVEY BAR	---	250 WWS	---
o	MANHOLE	o	FENCE	o	PROFILE	o
□	CATCH BASIN	□	POLE - HYDRO, MTS	□	GROUND ABOVE PIPE	□
▽	CURB INLET	▽	CURB STOP	▽		▽
△	REDUCER	△	GUY ANCHOR	△		△
X	COUPLING	X	LIGHT STANDARD	X		X
⊕	ANODE	⊕	TREE	⊕		⊕
---	EXISTING LEGEND-PLAN	---	PROPOSED	---	EXISTING LEGEND-PROFILE	---
---		---		---	PROPOSED	---

LOCATION APPROVED UNDERGROUND STRUCTURES	R.M. ELEV.	FIELD BOOK #
SUPV. U/G STRUCTURES COMMITTEE		
DATE		
NOTE:		
LOCATION OF UNDERGROUND STRUCTURES AS SHOWN ARE BASED ON THE BEST INFORMATION AVAILABLE BUT NO GUARANTEE IS GIVEN THAT ALL EXISTING UTILITIES ARE SHOWN OR THAT THE GIVEN LOCATIONS ARE EXACT. CONFIRMATION OF EXISTENCE AND EXACT LOCATION OF ALL SERVICES MUST BE OBTAINED FROM THE INDIVIDUAL UTILITIES BEFORE PROCEEDING WITH CONSTRUCTION.		
NO. REVISIONS	DATE	BY

CITY OF WINNIPEG WATER AND WASTE ENGINEERING DIVISION

DESIGNED BY: SC
CHECKED BY: KZ

DRAWN BY: CJH
APPROVED BY: KZ

HOR. SCALE: 1:250
VERTICAL: 1:50

DATE: 2005 03 18

ENGINEER'S SEAL

ORIGINAL SIGNED BY K.R. ZUREK
03/04/23

BID OPPORTUNITY: 135-2005
FILENAME: D-8663.D-8664.dwg
PLOT DATE: 2005 03 18

THE CITY OF WINNIPEG WATER AND WASTE DEPARTMENT

2005 WATERMAIN RENEWALS

CORNELL DRIVE
LINACRE RD TO 23 m N
BALDRY BAY (S LEG)

SHEET 2 OF 18
CITY DRAWING NUMBER
D-8663