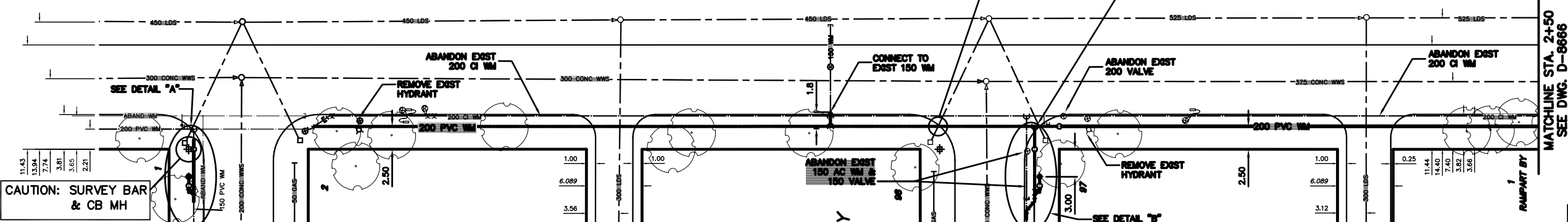
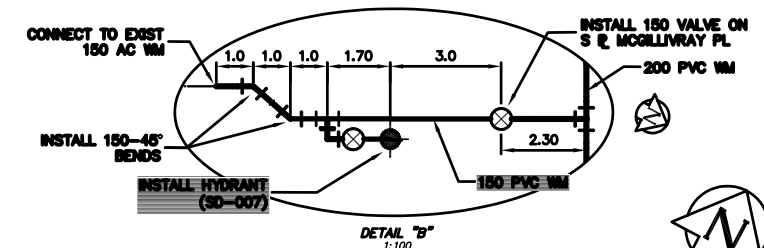


NOTE: CHAINAGES SHOWN ARE ALONG S E OF MCGILLIVRAY PLACE

MCGILLIVRAY PLACE



WATER SERVICE INFORMATION

ADDRESS	SIZE(mm) & TYPE (STREET)	SIZE(mm) & TYPE (PROP)	SHORT & LONG MEASUREMENT	CORP. LOCATION	SERVICED FROM
1 BISCAYNE BAY RESIDENTIAL	25 COPPER	25 COPPER	9.91 N HSE	0.91 N OF S/C	SERVICED FROM BISCAYNE
2 BISCAYNE BAY RESIDENTIAL	25 COPPER	25 COPPER	8.69 S HSE	1.77 S OF S/C	SERVICED FROM BISCAYNE
98 RAMPART BAY RESIDENTIAL	25 COPPER	-	11.89 N OF SBL	11.58 S OF NHL	SERVICED FROM RAMPART
98 RAMPART BAY RESIDENTIAL	25 COPPER	-	4.27 W OF EHL	0.61 W OF EHL	SERVICED FROM RAMPART

*SERVICES TO BE RENEWED TO R ALL OTHERS TO BE RECONNECTED

- CONSTRUCTION NOTES**
1. EXPOSE EXISTING WATERMAIN & CONFIRM INVERTS PRIOR TO CONSTRUCTION.
 2. LOCATION OF ALL SERVICES TO BE CONFIRMED IN THE FIELD.
 3. INSTALL WATERMAIN BY TRENCHLESS METHODS.
 4. TRENCHES AND EXCAVATIONS WITHIN 1 METRE OF A PAVED AREA INCLUDING SIDEWALKS SHALL BE CLASS 3 BACKFILL.
 5. ALL MATERIALS SHALL CONFORM TO THE CITY OF WINNIPEG STANDARD CONSTRUCTION SPECIFICATIONS.
 6. MINIMUM COVER TO TOP OF WATERMAIN SHALL BE 2.4 m.
 7. REPLACE ALL EXISTING LEAD SERVICES FROM PROPOSED WATERMAIN TO R.
 8. NOTIFY ALL AFFECTED RESIDENTS AND BUSINESSES 24 HOURS IN ADVANCE OF ANY WATER SHUTDOWNS OR DISRUPTION OF SERVICE.

METRIC
WHOLE NUMBERS INDICATE MILLIMETRES
DECIMALIZED NUMBERS INDICATE METRES

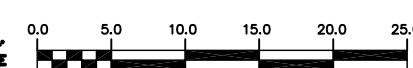
NOTE: ALL VALVES TO BE INSTALLED COUNTERCLOCKWISE TO CLOSE

WARNING

IF POWER EQUIPMENT OR EXPLOSIVES ARE TO BE USED FOR EXCAVATION ON THIS PROJECT THE CONTRACTOR MUST:

- 1) NOTIFY THE GAS COMPANY OF THE PROPOSED LOCATION OF EXCAVATION.
- 2) TAKE PRECAUTION TO AVOID DAMAGE TO GAS COMPANY INSTALLATIONS.

SEE PROVINCIAL REGULATION 210/72 FOR DETAILS



200 WM	WATERMAIN	200 WM	SL, HYDRO	150 WM	WATERMAIN	150 WM
+	HYDRANT	+	MTS	+	HYDRANT	+
o	VALVE	o	TRAFFIC SIGNALS	+	VALVE	+
525 LDS	LAND DRAINAGE SEWER	525 LDS	GAS	50 GAS	300 LDS	LAND DRAINAGE SEWER
375 WWS	WASTEWATER SEWER	375 WWS	SURVEY BAR	250 WWS	250 WWS	WASTEWATER SEWER
o	MANHOLE	o	FENCE	x	o	PROFILE
□	CATCH BASIN	□	POLE - HYDRO, MTS	---	□	GROUND ABOVE PIPE
∇	CURB INLET	∇	CURB STOP	△	∇	DITCH (NORTH & WEST)
∇	REDUCER	∇	GUY ANCHOR	∇	∇	DITCH (SOUTH & EAST)
X	COUPLER	X	LIGHT STANDARD	□	□	GUTTER (NORTH & WEST)
o	ANODE	o	TREE	o	o	GUTTER (SOUTH & EAST)
EXISTING	LEGEND-PLAN	PROPOSED	EXISTING	LEGEND-PLAN	PROPOSED	EXISTING
				LEGEND-PROFILE		PROPOSED

LOCATION APPROVED UNDERGROUND STRUCTURES

SUPV. U/O STRUCTURES COMMITTEE DATE

NOTE: LOCATION OF UNDERGROUND STRUCTURES AS SHOWN ARE BASED ON THE BEST INFORMATION AVAILABLE BUT NO GUARANTEE IS GIVEN THAT ALL EXISTING UTILITIES ARE SHOWN OR THAT THE GIVEN LOCATIONS ARE EXACT. CONFIRMATION OF EXISTENCE AND EXACT LOCATION OF ALL SERVICES MUST BE OBTAINED FROM THE INDIVIDUAL UTILITIES BEFORE PROCEEDING WITH CONSTRUCTION.

R.M. ELEV. FIELD BOOK #

POSTED TO LISB

CITY OF WINNIPEG WATER AND WASTE ENGINEERING DIVISION

DESIGNED BY SC CHECKED BY KZ

DRAWN BY C/JH/BW APPROVED BY KZ

HOR. SCALE 1:250 VERTICAL 1:50

DATE 2005 03 18

ENGINEER'S SEAL ORIGINAL SIGNED BY K.R. ZUREK 05/03/18

THE CITY OF WINNIPEG WATER AND WASTE DEPARTMENT

2005 WATERMAIN RENEWALS

McGILLIVRAY PLACE E LEG BISCAYNE BAY TO E LEG RAMPART BAY

SHEET 4 OF 18 CITY DRAWING NUMBER D-8665

BID OPPORTUNITY: 135-2005 FILENAME: D-8662_65_66.dwg PLOT DATE: 2005 03 18