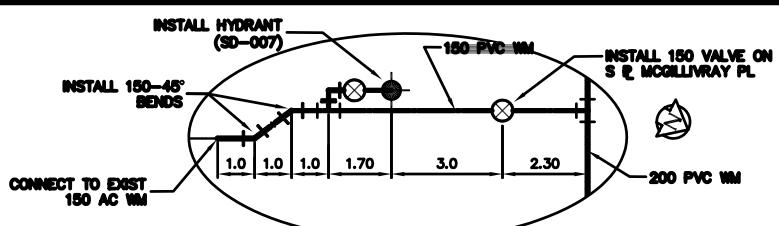


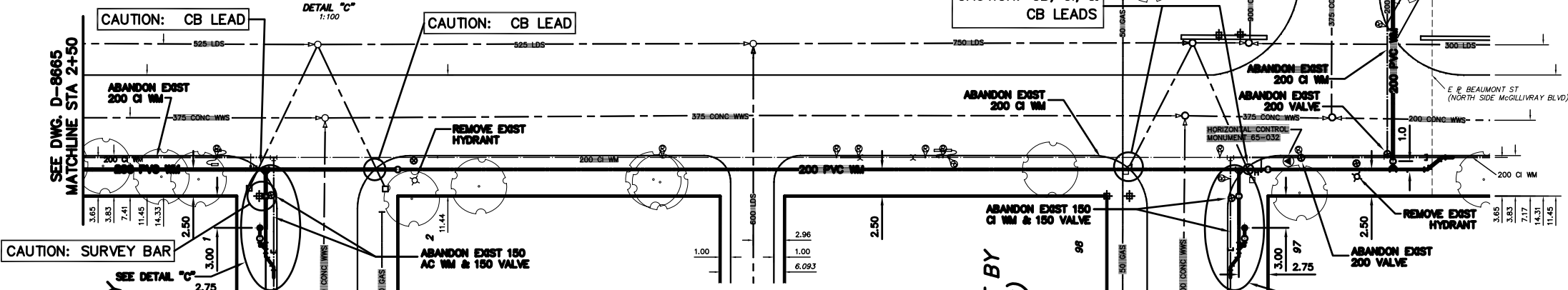
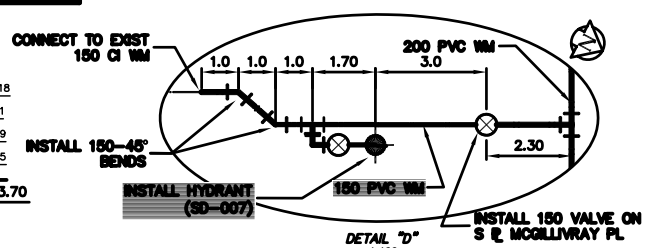
- CONSTRUCTION NOTES**
1. EXPOSE EXISTING WATERMAIN & CONFIRM INVERTS PRIOR TO CONSTRUCTION.
  2. LOCATION OF ALL SERVICES TO BE CONFIRMED IN THE FIELD.
  3. INSTALL WATERMAIN BY TRENCHLESS METHODS.
  4. TRENCHES AND EXCAVATIONS WITHIN 1 METRE OF A PAVED AREA INCLUDING SIDEWALKS SHALL BE CLASS 3 BACKFILL.
  5. ALL MATERIALS SHALL CONFORM TO THE CITY OF WINNIPEG STANDARD CONSTRUCTION SPECIFICATIONS.
  6. MINIMUM COVER TO TOP OF WATERMAIN SHALL BE 2.4 m.
  7. REPLACE ALL EXISTING LEAD SERVICES FROM PROPOSED WATERMAIN TO E.
  8. NOTIFY ALL AFFECTED RESIDENTS AND BUSINESSES 24 HOURS IN ADVANCE OF ANY WATER SHUTDOWNS OR DISRUPTION OF SERVICE.



NOTE: CHAINAGES SHOWN ARE ALONG S & OF MCGILLIVRAY PLACE

**MCGILLIVRAY PLACE**

FOR CONTINUATION SEE DWG. D-8662



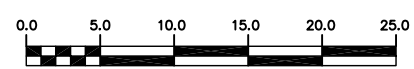
**WATER SERVICE INFORMATION**

ADDRESS	SIZE(mm) & TYPE (STREET)	SIZE(mm) & TYPE (PROP)	SHORT & LONG MEASUREMENT	CORP. LOCATION	REMARKS
1 RAMPART BAY RESIDENTIAL	25 COPPER	-	9.14 SNL HSE	7.32 SNL HSE	SERVICED FROM RAMPART
2 RAMPART BAY RESIDENTIAL	20 COPPER	-	9.14 SNL HSE	7.32 SNL HSE	SERVICED FROM RAMPART
98 BEAUMONT BAY RESIDENTIAL	25 COPPER	25	9.14 SNL HSE	8.08 SNL HSE	SERVICED FROM BEAUMONT
97 BEAUMONT BAY RESIDENTIAL	25 COPPER	25	10.06 S OF NHL	12.50 S OF NHL	SERVICED FROM BEAUMONT

• SERVICES TO BE RENEWED TO E ALL OTHERS TO BE RECONNECTED

**METRIC**  
WHOLE NUMBERS INDICATE MILLIMETRES  
DECIMALIZED NUMBERS INDICATE METRES

**WARNING**  
IF POWER EQUIPMENT OR EXPLOSIVES ARE TO BE USED FOR EXCAVATION ON THIS PROJECT THE CONTRACTOR MUST:  
1) NOTIFY THE GAS COMPANY OF THE PROPOSED LOCATION OF EXCAVATION.  
2) TAKE PRECAUTION TO AVOID DAMAGE TO GAS COMPANY INSTALLATIONS.  
SEE PROVINCIAL REGULATION 210/72 FOR DETAILS



EXISTING	LEGEND-PLAN	PROPOSED	EXISTING	LEGEND-PLAN	PROPOSED	EXISTING	LEGEND-PROFILE	PROPOSED
200 WM	WATERMAIN	200 WM	SL, HYDRO	150 WM	WATERMAIN	150 WM	WATERMAIN	150 WM
525 LDS	LAND DRAINAGE SEWER	525 LDS	50 GAS	300 LDS	LAND DRAINAGE SEWER	300 LDS	LAND DRAINAGE SEWER	300 LDS
375 WWS	WASTEWATER SEWER	375 WWS	250 WWS	250 WWS	WASTEWATER SEWER	250 WWS	WASTEWATER SEWER	250 WWS
○	MANHOLE	●	—	—	FENCE	—	—	—
□	CATCH BASIN	■	—	—	POLE - HYDRO, MTS	—	—	—
▽	CURB INLET	◊	—	—	CURB STOP	—	—	—
△	REDUCER	▽	—	—	GUY ANCHOR	—	—	—
X	COUPLER	X	—	—	LIGHT STANDARD	—	—	—
⊕	ANODE	⊕	—	—	TREE	—	—	—

LOCATION APPROVED	UNDERGROUND STRUCTURES	DATE
SUPV. U/G STRUCTURES COMMITTEE		

NOTE:  
LOCATION OF UNDERGROUND STRUCTURES AS SHOWN ARE BASED ON THE BEST INFORMATION AVAILABLE BUT NO GUARANTEE IS GIVEN THAT ALL EXISTING UTILITIES ARE SHOWN OR THAT THE GIVEN LOCATIONS ARE EXACT. CONFIRMATION OF EXISTENCE AND EXACT LOCATION OF ALL SERVICES MUST BE OBTAINED FROM THE INDIVIDUAL UTILITIES BEFORE PROCEEDING WITH CONSTRUCTION.

**CITY OF WINNIPEG**  
**WATER AND WASTE**  
**ENGINEERING DIVISION**

DESIGNED BY: SC  
CHECKED BY: KZ  
DRAWN BY: C/JH/BW  
APPROVED BY: KZ  
HOR. SCALE: 1:250  
VERTICAL: 1:50  
DATE: 2005 03 18

ENGINEER'S SEAL  
**ORIGINAL SIGNED**  
**BY K.R. ZUREK**  
**05/03/18**

BID OPPORTUNITY: 135-2005  
FILENAME: D-8662\_05\_06.dwg  
PLOT DATE: 2005 03 18

**THE CITY OF WINNIPEG**  
**WATER AND WASTE DEPARTMENT**

**2005 WATERMAIN RENEWALS**

**McGILLIVRAY PLACE**  
**E LEG RAMPART BAY TO**  
**BEAUMONT BAY**

SHEET **5** OF **18**  
CITY DRAWING NUMBER  
**D-8666**