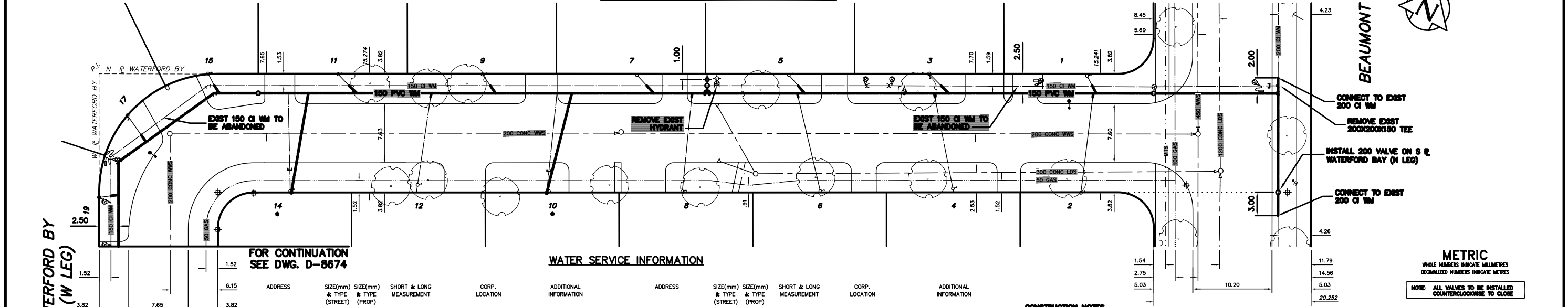


NOTE: CHAINAGES SHOWN ARE ALONG WATERFORD BY (N LEG)
N R OF WATERFORD BY (N LEG)



FOR CONTINUATION
SEE DWG. D-8674

WATER SERVICE INFORMATION

ADDRESS	SIZE(mm) & TYPE (STREET)	SIZE(mm) & TYPE (PROP)	SHORT & LONG MEASUREMENT	CORP. LOCATION	ADDITIONAL INFORMATION	ADDRESS	SIZE(mm) & TYPE (STREET)	SIZE(mm) & TYPE (PROP)	SHORT & LONG MEASUREMENT	CORP. LOCATION	ADDITIONAL INFORMATION
1 WATERFORD BAY RESIDENTIAL	-	-	5.79 EHWL 10.67 EWPL	9.14 W MV ● BEAUMONT ST	14.45 W MH ● BEAUMONT ST	9 WATERFORD BAY RESIDENTIAL	20 COPPER	20 COPPER	7.83 WEPL	86.08 W MV ● BEAUMONT ST	17.31 W MH OPP 7 WATERFORD BAY
2 WATERFORD BAY RESIDENTIAL	-	-	7.68 EWPL	9.02 W MV ● BEAUMONT ST	14.02 W MH ● BEAUMONT ST	10 WATERFORD BAY RESIDENTIAL	-	-	7.93 EWPL	78.09 W MV ● BEAUMONT ST	9.69 W MH OPP 7 WATERFORD BAY
3 WATERFORD BAY RESIDENTIAL	-	-	4.86 WEHL 9.60 EWPL	28.74 W MV ● BEAUMONT ST	33.53 W MH ● BEAUMONT ST	11 WATERFORD BAY RESIDENTIAL	-	-	9.14 WEPL	104.97 W MV ● BEAUMONT ST	21.18 E MH OPP 17 WATERFORD BAY
4 WATERFORD BAY RESIDENTIAL	-	-	5.79 EHWL 9.27 WEPL	29.72 W MV ● BEAUMONT ST	31.55 W MH ● BEAUMONT ST	12 WATERFORD BAY RESIDENTIAL	-	-	7.93 EWPL	94.18 W MV ● BEAUMONT ST	30.82 E MH OPP 17 WATERFORD BAY
5 WATERFORD BAY RESIDENTIAL	-	-	8.84 WEPL	47.24 W MV ● BEAUMONT ST	53.04 W MH ● BEAUMONT ST	14 WATERFORD BAY RESIDENTIAL	-	-	8.23 WEPL	112.78 W MV ● BEAUMONT ST	14.78 E MH OPP 17 WATERFORD BAY
6 WATERFORD BAY RESIDENTIAL	-	-	8.23 EWPL	47.43 W MV ● BEAUMONT ST	48.48 W MH ● BEAUMONT ST	15 WATERFORD BAY RESIDENTIAL	-	-	6.71 WEPL	122.29 W MV ● BEAUMONT ST	4.48 E MH OPP 17 WATERFORD BAY
7 WATERFORD BAY RESIDENTIAL	-	-	9.30 WEPL	66.75 W MV ● BEAUMONT ST	1.92 E MH OPP 7 WATERFORD BAY	17 WATERFORD BAY RESIDENTIAL	-	-	5.79 NSPL	35.39 N HYD OPP 23 WATERFORD BY	78.18 N MH ● S LEG WATERFORD BAY
8 WATERFORD BAY RESIDENTIAL	-	-	2.80 WEPL	60.72 W MV ● BEAUMONT ST	7.31 E MH OPP 7 WATERFORD BAY	19 WATERFORD BAY RESIDENTIAL	-	-	9.08 NSHL 9.45 NSPL	27.43 N HYD OPP 23 WATERFORD BY	75.41 N MH ● S LEG WATERFORD BAY

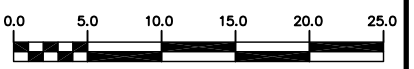
● SERVICES TO BE RENEWED TO R ALL OTHERS TO BE RECONNECTED

- CONSTRUCTION NOTES**
1. EXPOSE EXISTING WATERMAIN & CONFIRM INVERTS PRIOR TO CONSTRUCTION.
 2. LOCATION OF ALL SERVICES TO BE CONFIRMED IN THE FIELD.
 3. INSTALL WATERMAIN BY TRENCHLESS METHODS.
 4. TRENCHES AND EXCAVATIONS WITHIN 1 METRE OF A PAVED AREA INCLUDING SIDEWALKS SHALL BE CLASS 3 BACKFILL.
 5. ALL MATERIALS SHALL CONFORM TO THE CITY OF WINNIPEG STANDARD CONSTRUCTION SPECIFICATIONS.
 6. MINIMUM COVER TO TOP OF WATERMAIN SHALL BE 2.4 m.
 7. REPLACE ALL EXISTING LEAD SERVICES FROM PROPOSED WATERMAIN TO R.
 8. NOTIFY ALL AFFECTED RESIDENTS AND BUSINESSES 24 HOURS IN ADVANCE OF ANY WATER SHUTDOWNS OR DISRUPTION OF SERVICE.

METRIC
WHOLE NUMBERS INDICATE MILLIMETRES
DECIMALIZED NUMBERS INDICATE METRES

NOTE: ALL VALVES TO BE INSTALLED COUNTERCLOCKWISE TO CLOSE

WARNING
IF POWER EQUIPMENT OR EXPLOSIVES ARE TO BE USED FOR EXCAVATION ON THIS PROJECT THE CONTRACTOR MUST:
1) NOTIFY THE GAS COMPANY OF THE PROPOSED LOCATION OF EXCAVATION.
2) TAKE PRECAUTION TO AVOID DAMAGE TO GAS COMPANY INSTALLATIONS.
SEE PROVINCIAL REGULATION 210/72 FOR DETAILS



EXISTING	LEGEND-PLAN	PROPOSED	EXISTING	LEGEND-PLAN	PROPOSED	EXISTING	LEGEND-PROFILE	PROPOSED
○	200 WM	○	SL, HYDRO	○	150 WM	○	WATERMAIN	○
○	HYDRANT	○	MTS	○	WATERMAIN	○	HYDRANT	○
○	VALVE	○	TRAFFIC SIGNALS	○	WATERMAIN	○	VALVE	○
○	525 LDS LAND DRAINAGE SEWER	○	GAS	○	50 GAS	○	LAND DRAINAGE SEWER	○
○	375 WWS WASTEWATER SEWER	○	SURVEY BAR	○	250 WWS	○	WASTEWATER SEWER	○
○	MANHOLE	○	FENCE	○	○	○	PROFILE	○
○	CATCH BASIN	○	POLE - HYDRO, MTS	○	○	○	GROUND ABOVE PIPE	○
○	CURB INLET	○	CURB STOP	○	○	○	DITCH (NORTH & WEST)	○
○	REDUCER	○	GUY ANCHOR	○	○	○	DITCH (SOUTH & EAST)	○
○	COUPLER	○	LIGHT STANDARD	○	○	○	GUTTER (NORTH & WEST)	○
○	ANODE	○	TREE	○	○	○	GUTTER (SOUTH & EAST)	○

LOCATION APPROVED	B.M. ELEV.	FIELD BOOK #:
UNDERGROUND STRUCTURES	POSTED TO LISB	
SUPV. U/G STRUCTURES COMMITTEE	DATE	
NOTE:		
LOCATION OF UNDERGROUND STRUCTURES AS SHOWN ARE BASED ON THE BEST INFORMATION AVAILABLE BUT NO GUARANTEE IS GIVEN THAT ALL EXISTING UTILITIES ARE SHOWN OR THAT THE GIVEN LOCATIONS ARE EXACT. CONFIRMATION OF EXISTENCE AND EXACT LOCATION OF ALL SERVICES MUST BE OBTAINED FROM THE INDIVIDUAL UTILITIES BEFORE PROCEEDING WITH CONSTRUCTION.		
NO. REVISIONS	DATE	BY

CITY OF WINNIPEG
WATER AND WASTE
ENGINEERING DIVISION

DESIGNED BY: SC
CHECKED BY: KZ

DRAWN BY: BW
APPROVED BY: KZ

HOR. SCALE: 1:250
VERTICAL: 1:50

DATE: 2005 03 18

ENGINEER'S SEAL

ORIGINAL SIGNED BY K.R. ZUREK
05/03/18

BID OPPORTUNITY: 135-2005
FILENAME: D-8674.D-8675.dwg
PLOT DATE: 2005 03 18

THE CITY OF WINNIPEG
WATER AND WASTE DEPARTMENT

2005 WATERMAIN RENEWALS

WATERFORD BAY (N LEG)
WATERFORD BAY (W LEG) TO
BEAUMONT STREET

SHEET 14 OF 18
CITY DRAWING NUMBER
D-8675