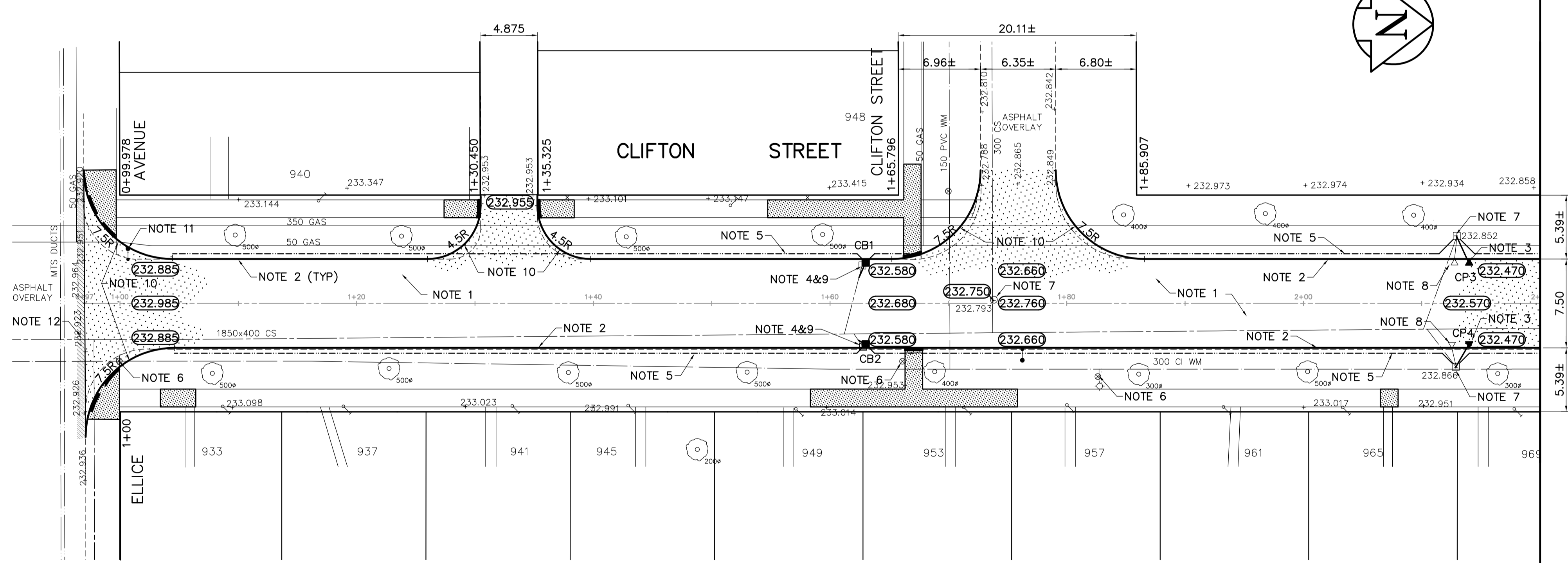


DESCRIPTION	RIM	INVERT			
		NORTH	SOUTH	EAST	WEST
CB 1	32.580			30.930	
CB 2	32.580				30.930
CP 3	32.470				31.520
CP 4	32.470			31.520	



- REFERENCE NOTES**
- PAVEMENT DIMENSIONS ARE TO BACK OF CURB
  - BASELINE IS CENTRE LINE RIGHT-OF-WAY
  - PROPERTY LINES OBTAINED FROM CITY OF WINNIPEG L.B.I.S., AND NO SCALE FACTOR WAS APPLIED.

- CONSTRUCTION NOTES**
- REMOVE EXISTING PAVEMENT AND CONSTRUCT NEW 150mm REINFORCED CONCRETE PAVEMENT.
  - CONSTRUCT NEW CONCRETE BARRIER CURB (SEPARATE).
  - INSTALL NEW CURB AND GUTTER INLET (SD023) c/w NEW 250mm LEAD TO EXISTING CATCHBASIN.
  - INSTALL NEW CURB AND GUTTER INLET c/w CATCH BASIN (SD024) AND CONNECT NEW 250mm LEAD TO EXISTING CATCH BASIN LEAD.
  - INSTALL 150mm SUBDRAIN.
  - ADJUST EXISTING WATER VALVE TO GRADE.
  - ADJUST EXISTING MANHOLE/CATCH BASIN TO GRADE.
  - ABANDON EXISTING DRAINAGE INLET.
  - REMOVE EXISTING CATCH BASIN.
  - CONSTRUCT NEW MODIFIED BARRIER CURB (INTEGRAL).
  - LIGHT STANDARD TO BE RELOCATED (BY OTHERS).
  - REMOVE EXISTING ASPHALT OVERLAY AND CONSTRUCT NEW 75mm ASPHALT OVERLAY.

**APEGM**  
 Certificate of Authorization  
 Earth Tech Canada Inc.  
 No. 730 Expiry: April 30, 2005

**METRIC**  
 WHOLE NUMBERS INDICATE MILLIMETRES  
 DECIMALIZED NUMBERS INDICATE METRES

EXISTING		LEGEND - PLAN		PROPOSED		EXISTING		LEGEND - PROFILE		PROPOSED	
150 mm W.M.	WATERMAIN	150 mm W.M.		150 mm W.M.		150 mm W.M.	WATERMAIN	150 mm W.M.		150 mm W.M.	
300mm L.D.S.	LAND DRAINAGE SEWER	300mm L.D.S.		300mm L.D.S.		300mm L.D.S.	LAND DRAINAGE SEWER	300mm L.D.S.		300mm L.D.S.	
250mm W.W.S.	WASTEWATER SEWER	250mm W.W.S.		250mm W.W.S.		250mm W.W.S.	WASTE WATER SEWER	250mm W.W.S.		250mm W.W.S.	
○	MANHOLE	○		○		○	MANHOLE	○		○	
□	CATCH BASIN	□		□		□	CATCH BASIN	□		□	
▽	CURB INLET	▽		▽		▽	CURB INLET	▽		▽	
+	JUNCTIONS	+		+		+	JUNCTIONS	+		+	
—	CULVERT	—		—		—	CULVERT	—		—	
—	GAS	—		—		—	GAS	—		—	
—	HYDRO	—		—		—	HYDRO	—		—	
—	M.T.S.	—		—		—	M.T.S.	—		—	
—	CONCRETE	—		—		—	CONCRETE	—		—	
—	ASPHALT	—		—		—	ASPHALT	—		—	
—	PROPERTY LINE	—		—		—	PROPERTY LINE	—		—	
—	SURVEY BAR	—		—		—	SURVEY BAR	—		—	
—	ELEVATION	—		—		—	ELEVATION	—		—	
—	TREE	—		—		—	TREE	—		—	
—	SIDEWALK RAMP	—		—		—	SIDEWALK RAMP	—		—	
—	CONCRETE SIDEWALK	—		—		—	CONCRETE SIDEWALK	—		—	
—	FENCE	—		—		—	FENCE	—		—	

**LOCATION APPROVED UNDERGROUND STRUCTURES**

SUPV. U/G STRUCTURES COMMITTEE DATE \_\_\_\_\_

**NOTE:**  
 LOCATION OF UNDERGROUND STRUCTURES AS SHOWN ARE BASED ON THE BEST INFORMATION AVAILABLE, BUT NO GUARANTEE IS GIVEN THAT ALL EXISTING UTILITIES ARE SHOWN OR THAT THE GIVEN LOCATIONS ARE EXACT. CONFIRMATION OF EXISTENCE AND EXACT LOCATION OF ALL SERVICES MUST BE OBTAINED FROM THE INDIVIDUAL UTILITIES BEFORE PROCEEDING WITH CONSTRUCTION.

B.M. 37-025 TBLT. IN W. CONC. FNDN. #919/925  
 WALL ST. 1m N. & 0.1m BELOW CONC.  
 ELEV. 233.121 BLOCK OF S.W. CNR. BUILDING.

**EarthTech**  
 A Tyco International Ltd. Company

DESIGNED BY: BC/BK CHECKED BY: TGS  
 DRAWN BY: BC APPROVED BY: ORIGINAL SIGNED  
 HOR. SCALE: 1=250  
 VERTICAL: 1=10  
 RELEASED FOR CONSTRUCTION BY: \_\_\_\_\_  
 DATE: 2005/03/08

ENGINEER'S SEAL  
 PROVINCE OF MANITOBA  
 ORIGINAL SIGNED  
**T.G. SMITH**  
 April 25, 2005  
 REGISTERED PROFESSIONAL ENGINEER

**THE CITY OF WINNIPEG**  
 PUBLIC WORKS DEPARTMENT  
 ENGINEERING DIVISION

**CLIFTON STREET**  
 ELLICE AVENUE TO SARGENT AVENUE

PAVEMENT RECONSTRUCTION  
 PLAN/PROFILE  
 ELLICE AVENUE TO STATION 2+20

CITY DRAWING NUMBER  
 SHEET 1 OF 3

CONSULTANT DRAWING NO.  
 CT01