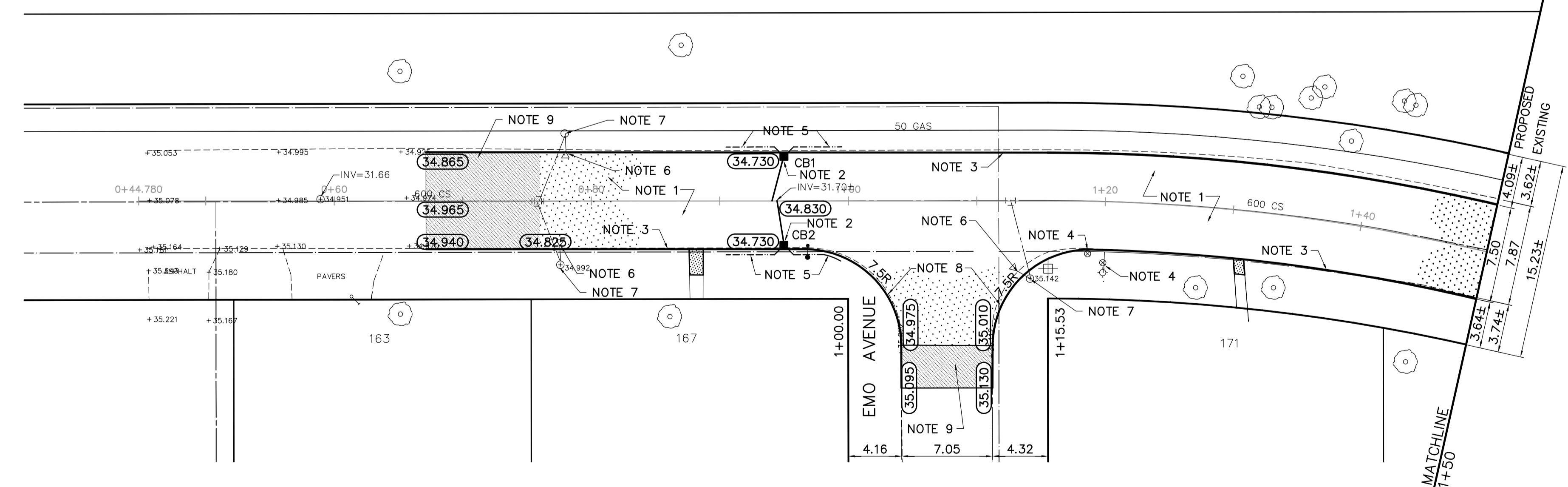


DESCRIPTION	RIM	INVERT			
		NORTH	SOUTH	EAST	WEST
CB 1	34.730			33.080	
CB 2	34.730				33.080

- REFERENCE NOTES**
- PAVEMENT DIMENSIONS ARE TO BACK OF CURB
  - ADD 200.000 TO OBTAIN GEODETIC DATUM
  - BASELINE IS CENTRE LINE RIGHT-OF-WAY
  - PROPERTY LINES OBTAINED FROM CITY OF WINNIPEG L.B.I.S., AND NO SCALE FACTOR WAS APPLIED.

- CONSTRUCTION NOTES**
- REMOVE EXISTING PAVEMENT AND CONSTRUCT NEW 150mm REINFORCED CONCRETE PAVEMENT.
  - INSTALL NEW CATCH BASIN (SD024) c/w CURB AND GUTTER INLET AND CONNECT NEW 250mm LEAD TO EXISTING 600mm COMBINED SEWER.
  - CONSTRUCT NEW CONCRETE BARRIER CURB (SEPARATE).
  - ADJUST EXISTING WATER VALVE TO GRADE.
  - INSTALL 150 SUBDRAIN.
  - ABANDON EXISTING DRAINAGE INLET.
  - REMOVE EXISTING CATCHBASIN AND PLUG 250mm LEAD.
  - CONSTRUCT 150mm HEIGHT MODIFIED BARRIER CURB (INTEGRAL).
  - REMOVE EXISTING ASPHALT AND PLACE NEW TYPE 1A ASPHALT.

HARRIS BOULEVARD



**APEGM**  
 Certificate of Authorization  
 Earth Tech Canada Inc.  
 No. 730 Expiry: April 30, 2005

METRIC  
 WHOLE NUMBERS INDICATE MILLIMETRES  
 DECIMALIZED NUMBERS INDICATE METRES

EXISTING	LEGEND - PLAN	PROPOSED	EXISTING	LEGEND - PLAN	PROPOSED	EXISTING	LEGEND - PROFILE	PROPOSED
150 mm W.M.	WATERMAIN	150 mm W.M.	HYDRO	M.T.S.	150 mm W.M.	WATERMAIN	HYDRANT	
300mm L.D.S.	LAND DRAINAGE SEWER	300mm L.D.S.	CONCRETE	ASPHALT	300mm L.D.S.	LAND DRAINAGE SEWER	VALVE	
250mm W.W.S.	WASTEWATER SEWER	250mm W.W.S.	PROPERTY LINE	SURVEY BAR	250mm W.W.S.	WASTE WATER SEWER	PROFILE	
○	MANHOLE	●	ELEVATION	(32.750)	○	N/W GUTTER	S/E GUTTER	
□	CATCH BASIN	■	TREE	○	N/W PROPERTY LINE	S/E PROPERTY LINE		
▽	CURB INLET	▽	SIDEWALK RAMP	CONCRETE SIDEWALK	▽	FENCE		
+	JUNCTIONS	+						
—	CULVERT	—						
—	GAS	—						

**LOCATION APPROVED UNDERGROUND STRUCTURES**

SUPV. U/G STRUCTURES COMMITTEE DATE

**NOTE:**  
 LOCATION OF UNDERGROUND STRUCTURES AS SHOWN ARE BASED ON THE BEST INFORMATION AVAILABLE, BUT NO GUARANTEE IS GIVEN THAT ALL EXISTING UTILITIES ARE SHOWN OR THAT THE GIVEN LOCATIONS ARE EXACT. CONFIRMATION OF EXISTENCE AND EXACT LOCATION OF ALL SERVICES MUST BE OBTAINED FROM THE INDIVIDUAL UTILITIES BEFORE PROCEEDING WITH CONSTRUCTION.

2	ISSUED FOR TENDER	05/04	BC
1	ISSUED FOR REVIEW	05/03/11	BC
NO.	REVISIONS	DATE	BY

**EarthTech**  
 A Tyco International Ltd. Company

DESIGNED BY: BC  
 CHECKED BY: TGS  
 DRAWN BY: BC  
 APPROVED BY: ORIGINAL SIGNED

HOR. SCALE: 1=250  
 VERTICAL: 1=10

RELEASED FOR CONSTRUCTION BY: [Signature]  
 DATE: 2004/11/28

ENGINEER'S SEAL  
 PROVINCE OF MANITOBA  
 ORIGINAL SIGNED  
**T.G. SMITH**  
 April 25, 2005  
 REGISTERED PROFESSIONAL ENGINEER  
 CONSULTANT DRAWING NO. CT04

**THE CITY OF WINNIPEG**  
 PUBLIC WORKS DEPARTMENT  
 ENGINEERING DIVISION

**HARRIS BOULEVARD**  
 EMO STREET TO PORTAGE AVENUE

PAVEMENT RECONSTRUCTION  
 PLAN/PROFILE  
 EMO AVENUE TO STATION 1+50

CITY DRAWING NUMBER  
 SHEET 1 OF 4