

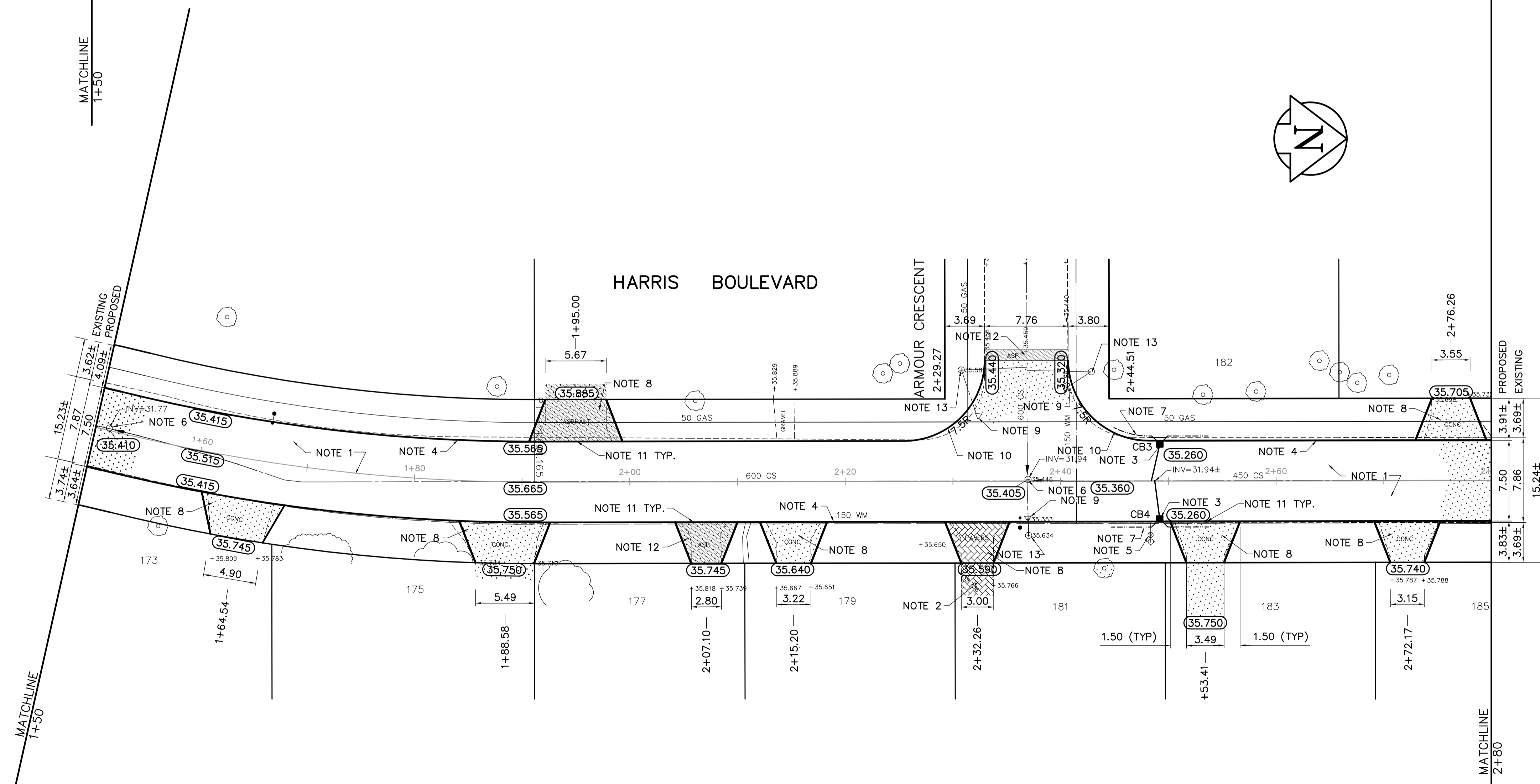
DESCRIPTION	RIM	INVERT			
		NORTH	SOUTH	EAST	WEST
CB 3	35.262			33.612	
CB 4	35.262				33.612

- REFERENCE NOTES**
- PAVEMENT DIMENSIONS ARE TO BACK OF CURB
 - ADD 200.000 TO OBTAIN GEODETIC DATUM
 - BASELINE IS CENTRE LINE RIGHT-OF-WAY
 - PROPERTY LINES OBTAINED FROM CITY OF WINNIPEG L.B.I.S., AND NO SCALE FACTOR WAS APPLIED.

- CONSTRUCTION NOTES**
- REMOVE EXISTING PAVEMENT AND CONSTRUCT NEW 150mm REINFORCED CONCRETE PAVEMENT.
 - REMOVE AND REINSTALL EXISTING PAVING STONES
 - INSTALL NEW CATCH BASIN (SD024) c/w CURB AND GUTTER INLET AND CONNECT NEW 250mm LEAD TO EXISTING 450mm COMBINED SEWER.
 - CONSTRUCT NEW CONCRETE BARRIER CURB (SEPARATE).
 - ADJUST EXISTING WATER VALVE TO GRADE.
 - ADJUST EXISTING MANHOLE TO GRADE.
 - INSTALL 150 SUBDRAIN.
 - REMOVE EXISTING CONCRETE AND PLACE NEW 150mm REINFORCED CONCRETE PAVEMENT.
 - ABANDON EXISTING DRAINAGE INLET.
 - CONSTRUCT 150mm HEIGHT MODIFIED BARRIER CURB (INTEGRAL).
 - CONSTRUCT LIP CURB (INTEGRAL) AS PER SD-202B.
 - REMOVE EXISTING ASPHALT OVERLAY AND CONSTRUCT NEW ASPHALT OVERLAY.
 - REMOVE EXISTING CATCH BASIN AND PLUG 250mm LEAD.

APEGM
 Certificate of Authorization
 Earth Tech Canada Inc.
 No. 730 Expiry: April 30, 2005

METRIC
 WHOLE NUMBERS INDICATE MILLIMETRES
 DECIMALIZED NUMBERS INDICATE METRES



EXISTING	LEGEND - PLAN	PROPOSED	EXISTING	LEGEND - PLAN	PROPOSED	EXISTING	LEGEND - PROFILE	PROPOSED
150 mm W.M.	WATERMAIN	150 mm W.M.	HYDRO	CONCRETE	150 mm W.M.	WATERMAIN	150 mm W.M.	WATERMAIN
300mm L.D.S.	LAND DRAINAGE SEWER	300mm L.D.S.	M.T.S.	ASPHALT	300mm L.D.S.	LAND DRAINAGE SEWER	300mm L.D.S.	LAND DRAINAGE SEWER
250mm W.W.S.	WASTEWATER SEWER	250mm W.W.S.	PROPERTY LINE	PROPERTY BAR	250mm W.W.S.	WASTE WATER SEWER	250mm W.W.S.	WASTE WATER SEWER
○	MANHOLE	○	TREE	SIDEWALK RAMP	○	CONCRETE	○	CONCRETE
□	CATCH BASIN	□	CONCRETE SIDEWALK	FENCE	□	ASPHALT	□	ASPHALT
▽	CURB INLET	▽	FENCE		▽	VALVE	▽	VALVE
+	JUNCTIONS	+			+	HYDRANT	+	HYDRANT
—	CULVERT	—			—	WATERMAIN	—	WATERMAIN
○	GAS	○			○	VALVE	○	VALVE

LOCATION APPROVED UNDERGROUND STRUCTURES

BLM 41-046
 ELEV. 235.025

NOTE:
 LOCATION OF UNDERGROUND STRUCTURES AS SHOWN ARE BASED ON THE BEST INFORMATION AVAILABLE, BUT NO GUARANTEE IS GIVEN THAT ALL EXISTING UTILITIES ARE SHOWN OR THAT THE GIVEN LOCATIONS ARE EXACT. CONFIRMATION OF EXISTENCE AND EXACT LOCATION OF ALL SERVICES MUST BE OBTAINED FROM THE INDIVIDUAL UTILITIES BEFORE PROCEEDING WITH CONSTRUCTION.

EarthTech
 A Tyco International Ltd. Company

DESIGNED BY: BC
 CHECKED BY: TGS
 DRAWN BY: BC
 APPROVED BY: ORIGINAL SIGNED

HOR. SCALE: 1=250
 VERTICAL: 1=10

RELEASED FOR CONSTRUCTION BY:
 DATE: 2004/11/28

ENGINEER'S SEAL
 PROVINCE OF MANITOBA
 ORIGINAL SIGNER
T.G. SMITH
 April 25, 2005
 REGISTERED PROFESSIONAL ENGINEER

THE CITY OF WINNIPEG
 PUBLIC WORKS DEPARTMENT
 ENGINEERING DIVISION

HARRIS BOULEVARD
 EMO STREET TO PORTAGE AVENUE
 PAVEMENT RECONSTRUCTION
 PLAN/PROFILE
 STATION 1+50 TO STATION 2+80

CITY DRAWING NUMBER
 SHEET 2 OF 4