

- REFERENCE NOTES**
- A. PAVEMENT DIMENSIONS ARE TO BACK OF CURB
 - B. ADD 200.000 TO OBTAIN GEODETIC DATUM
 - C. BASELINE IS CENTRE LINE RIGHT-OF-WAY
 - D. PROPERTY LINES OBTAINED FROM CITY OF WINNIPEG L.B.I.S., AND NO SCALE FACTOR WAS APPLIED.

- CONSTRUCTION NOTES**
1. REMOVE EXISTING PAVEMENT AND CONSTRUCT NEW 150mm REINFORCED CONCRETE PAVEMENT.
 2. CONSTRUCT NEW CONCRETE BARRIER CURB (SEPARATE).
 3. ADJUST EXISTING WATER VALVE TO GRADE.
 4. ADJUST EXISTING MANHOLE/CATCHBASIN TO GRADE.
 5. REMOVE EXISTING CONCRETE AND PLACE NEW 150mm REINFORCED CONCRETE PAVEMENT c/w 40mm LIP CURB AND GUTTER.
 6. REMOVE EXISTING PAVEMENT AND PLACE NEW 150mm CONCRETE PAVEMENT c/w 50mm TYPE 1A ASPHALT PAVEMENT.
 7. CONSTRUCT LIP CURB (INTERGRAL) AS PER SD-202B.

APEGM
 Certificate of Authorization
 Earth Tech Canada Inc.
 No. 730 Expiry: April 30, 2005

METRIC
 WHOLE NUMBERS INDICATE MILLIMETRES
 DECIMALIZED NUMBERS INDICATE METRES

EXISTING	LEGEND - PLAN	PROPOSED	EXISTING	LEGEND - PLAN	PROPOSED	EXISTING	LEGEND - PROFILE	PROPOSED
150 mm W.M.	WATERMAIN	150 mm W.M.	HYDRO	M.T.S.	150 mm W.M.	WATERMAIN	HYDRANT	
300mm L.D.S.	LAND DRAINAGE SEWER	300mm L.D.S.	CONCRETE	ASPHALT	300mm L.D.S.	LAND DRAINAGE SEWER	VALVE	
250mm W.W.S.	WASTEWATER SEWER	250mm W.W.S.	PROPERTY LINE	SURVEY BAR	250mm W.W.S.	WASTE WATER SEWER	CATCH BASIN	
	MANHOLE		ELEVATION	(32.750)			CURB INLET	
	CATCH BASIN		TREE				JUNCTIONS	
	CULVERT		SIDEWALK RAMP				CULVERT	
	GAS		CONCRETE SIDEWALK				GAS	
			FENCE					

LOCATION APPROVED UNDERGROUND STRUCTURES

SUPPLY U/G STRUCTURES COMMITTEE DATE

NOTE:
 LOCATION OF UNDERGROUND STRUCTURES AS SHOWN ARE BASED ON THE BEST INFORMATION AVAILABLE, BUT NO GUARANTEE IS GIVEN THAT ALL EXISTING UTILITIES ARE SHOWN OR THAT THE GIVEN LOCATIONS ARE EXACT. CONFIRMATION OF EXISTENCE AND EXACT LOCATION OF ALL SERVICES MUST BE OBTAINED FROM THE INDIVIDUAL UTILITIES BEFORE PROCEEDING WITH CONSTRUCTION.

B.M. 41-046 TBL ON TOP OF IRON PIPE, 5.3m E. OF C.L. ASPHALT ROADWAY OF HARRIS BLVD & 6.3m S. OF C.L. ASPHALT ROADWAY OF EMG AVE.
 ELEV. 235.025

NO.	REVISIONS	DATE	BY
2	ISSUED FOR TENDER	05/04	BC
1	ISSUED FOR REVIEW	05/03/11	BC

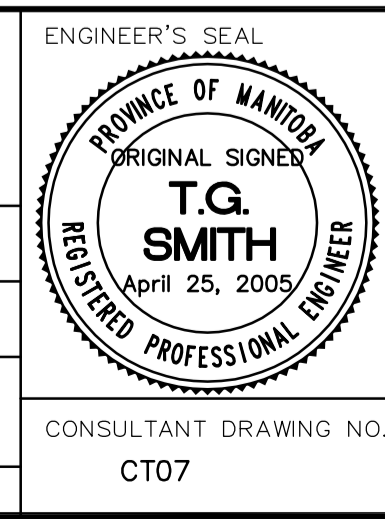
EarthTech
 A Tyco International Ltd. Company

DESIGNED BY	BC	CHECKED BY	TGS
DRAWN BY	BC	APPROVED BY	ORIGINAL SIGNED

HOR. SCALE: 1=250
 VERTICAL: 1=10

RELEASED FOR CONSTRUCTION BY: _____

DATE: 2004/11/28



THE CITY OF WINNIPEG
 PUBLIC WORKS DEPARTMENT
 ENGINEERING DIVISION

HARRIS BOULEVARD
 EMO STREET TO PORTAGE AVENUE

PAVEMENT RECONSTRUCTION
 PLAN/PROFILE
 STATION 4+15 TO PORTAGE AVENUE

CITY DRAWING NUMBER
 SHEET 4 OF 4

CONSULTANT DRAWING NO.
 CT07