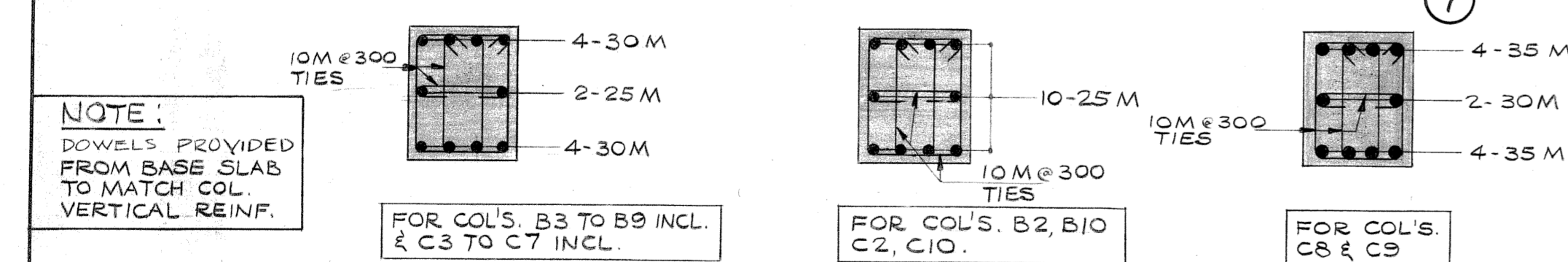
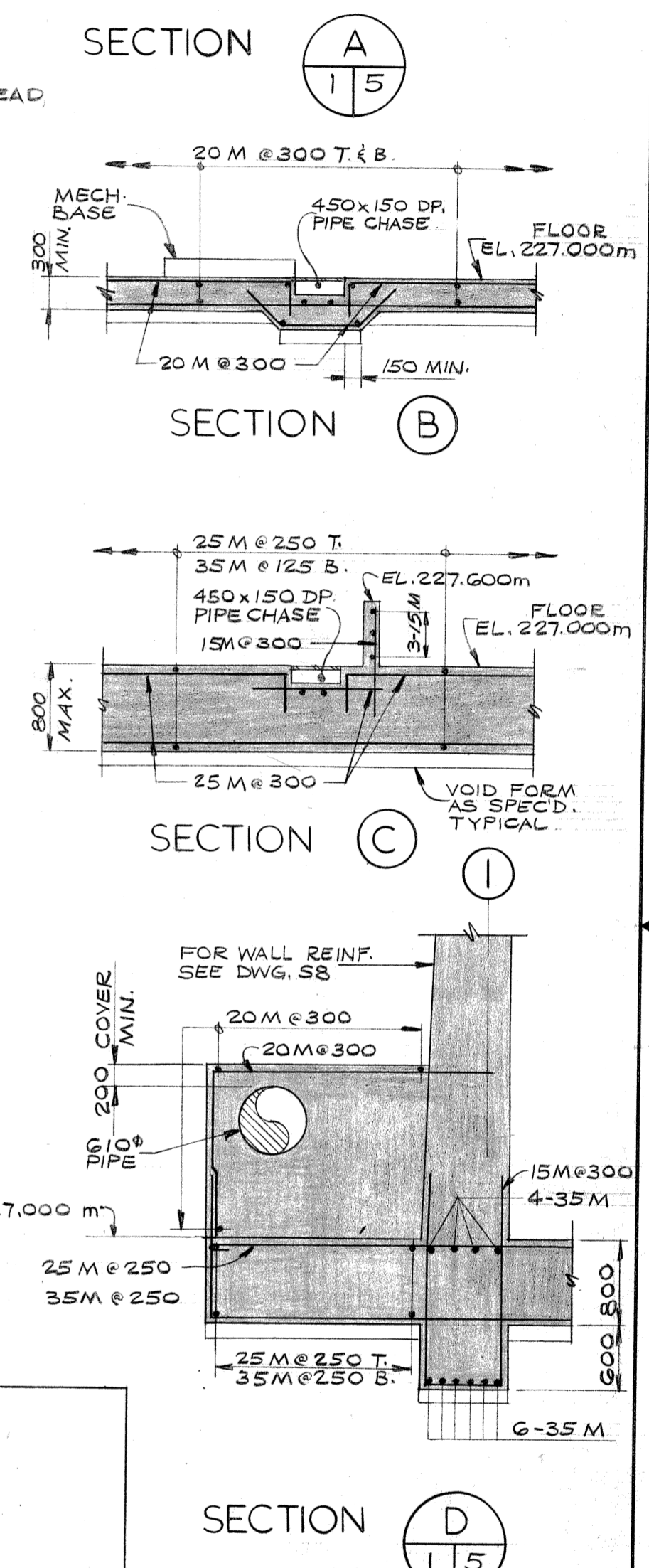
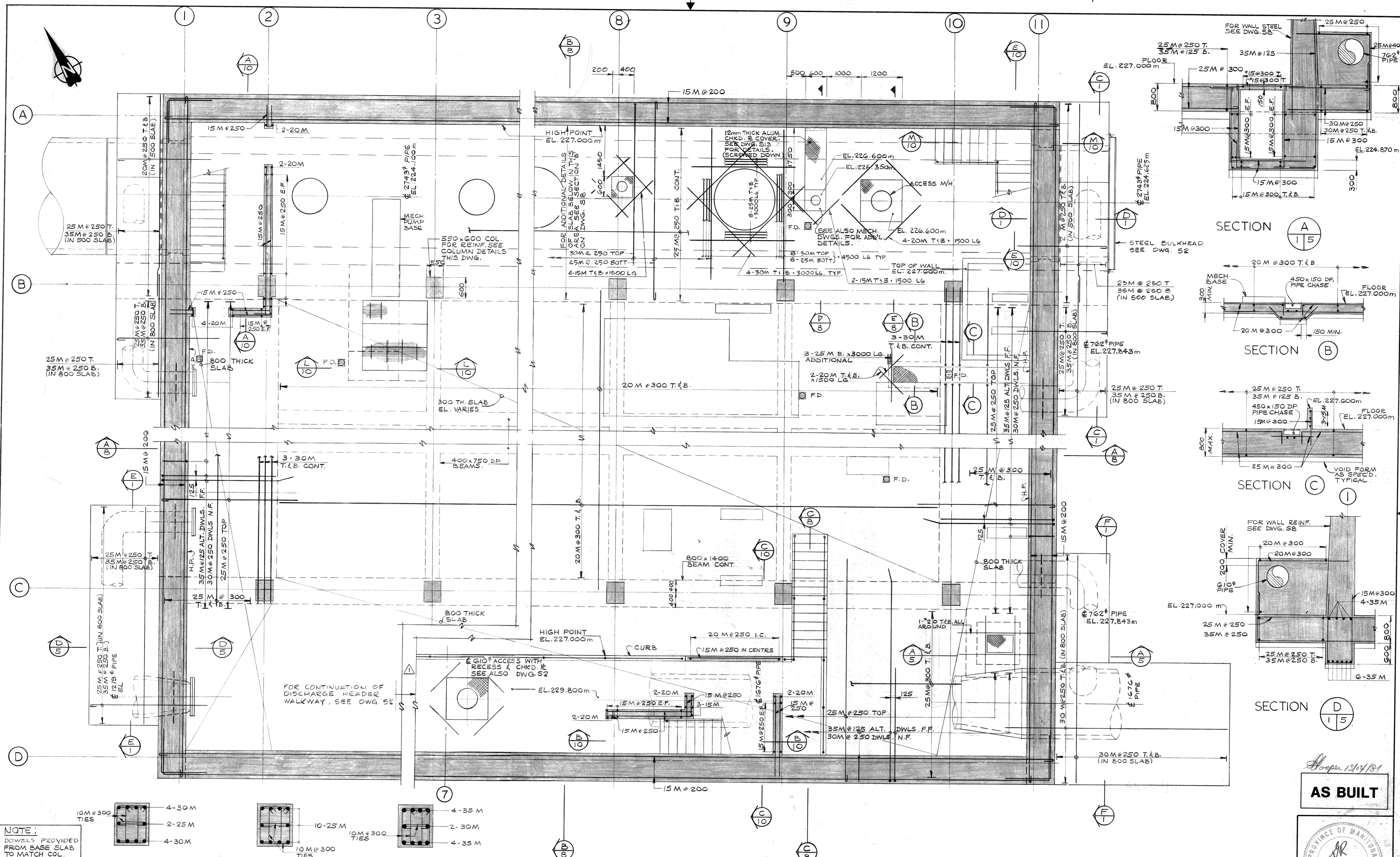


10 DBP-19



PART PLAN ABOVE EL. 227.000 m

NOTE: FOR DIMENSIONS SEE DRAWING S2.

CONSULTANT	CENTRAL FILE	ENGINEERING OFFICE	SHEET NO.	NO. OF SHEETS	DATE FILMED
DIVISION OF ENGINEERING	ENGINEERING OFFICE				
DRAWING FILE NUMBER					
GRID CO-ORDINATES					
MICROFILMING					
WORKS & OPERATIONS DEPARTMENT					

REV.	DESCRIPTION	BY	DATE
	REVISED TO AS BUILT	AM	MAY 80

JAMES F. MACLAREN LIMITED
CONSULTING ENGINEERS, PLANNERS AND SCIENTISTS
WINNIPEG · LONDON · WINDSOR · WATERLOO · TORONTO

DRAWN BY: R.H.K.L. DESIGNED BY: N.R.
CHECKED BY: C.V.W. APPROVED BY: *[Signature]*

THE CITY OF WINNIPEG
WATERWORKS, WASTE AND DISPOSAL DIVISION
DEACON BOOSTER PUMPING STATION
STRUCTURAL
PART PLAN ABOVE ELEV. 227.000 m

AS BUILT

PROVINCE OF MANITOBA
G. REMPEL
REGISTERED ENGINEER

SCALE: 1:50
DATE: MAY 30, 1978
CONSULTANT DRAWING No.
S5 of 13
CITY DRAWING No.
DBP-19