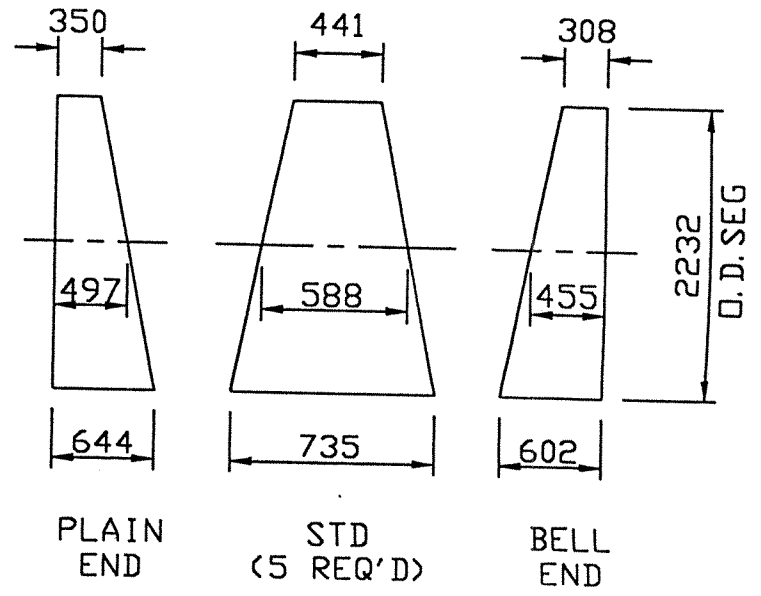
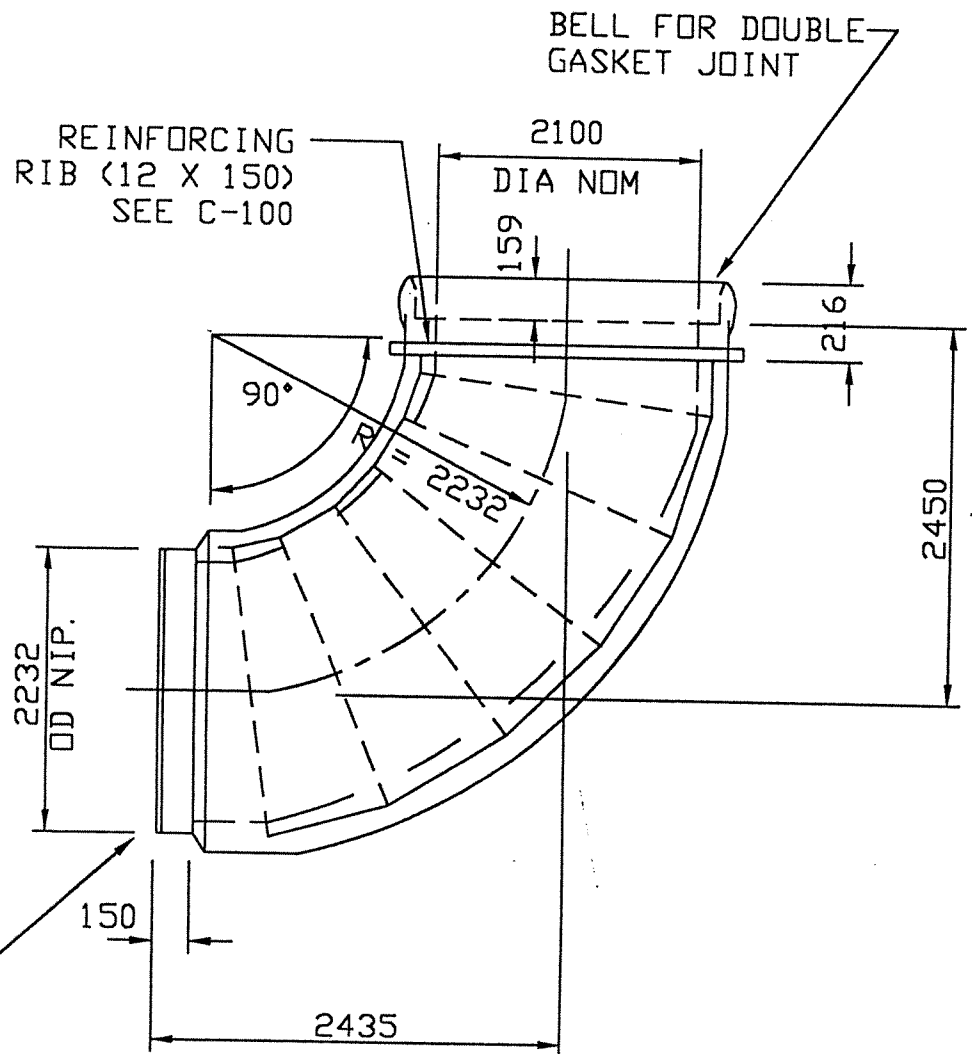
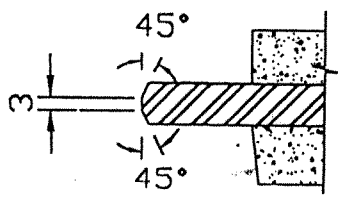


F-4135-96



PLAIN STEEL END
WITH DOUBLE GROOVE
FOR BUTT WELD ON SITE

TYPE 50 CEMENT INSIDE & OUTSIDE



SPECIFICATION : AWWA C301(E)
 TYPE : "B"
 CLASS/PRESSURE : 350 KPA
 PLATE THICKNESS : 12
 WIRE MESH : }
 WALL THICKNESS : } C-100

REV.	DATE	REVISION	BY
<small>THIS DRAWING HAS ALL TECHNICAL INFORMATION APPEARING HEREON ARE THE PROPERTY OF HYPRESCON INC. AND MUST BE KEPT IN CONFIDENCE BY THE RECIPIENT. THE SAME MAY NOT BE USED OR REPRODUCED EITHER IN WHOLE OR IN PART WITHOUT THE EXPRESS CONSENT OF HYPRESCON INC., WHICH RESERVES ALL RIGHTS OF COPYRIGHT.</small>			
HYPRESCON inc.			
WINNIPEG - P.D. 95-2 DETAIL OF MK: 28			
SCALE: NOT TO SCALE		DATE: 95/05/02	Ca8
DRAWN	CHECKED	APPROVED	PROJECT DVG. REV.