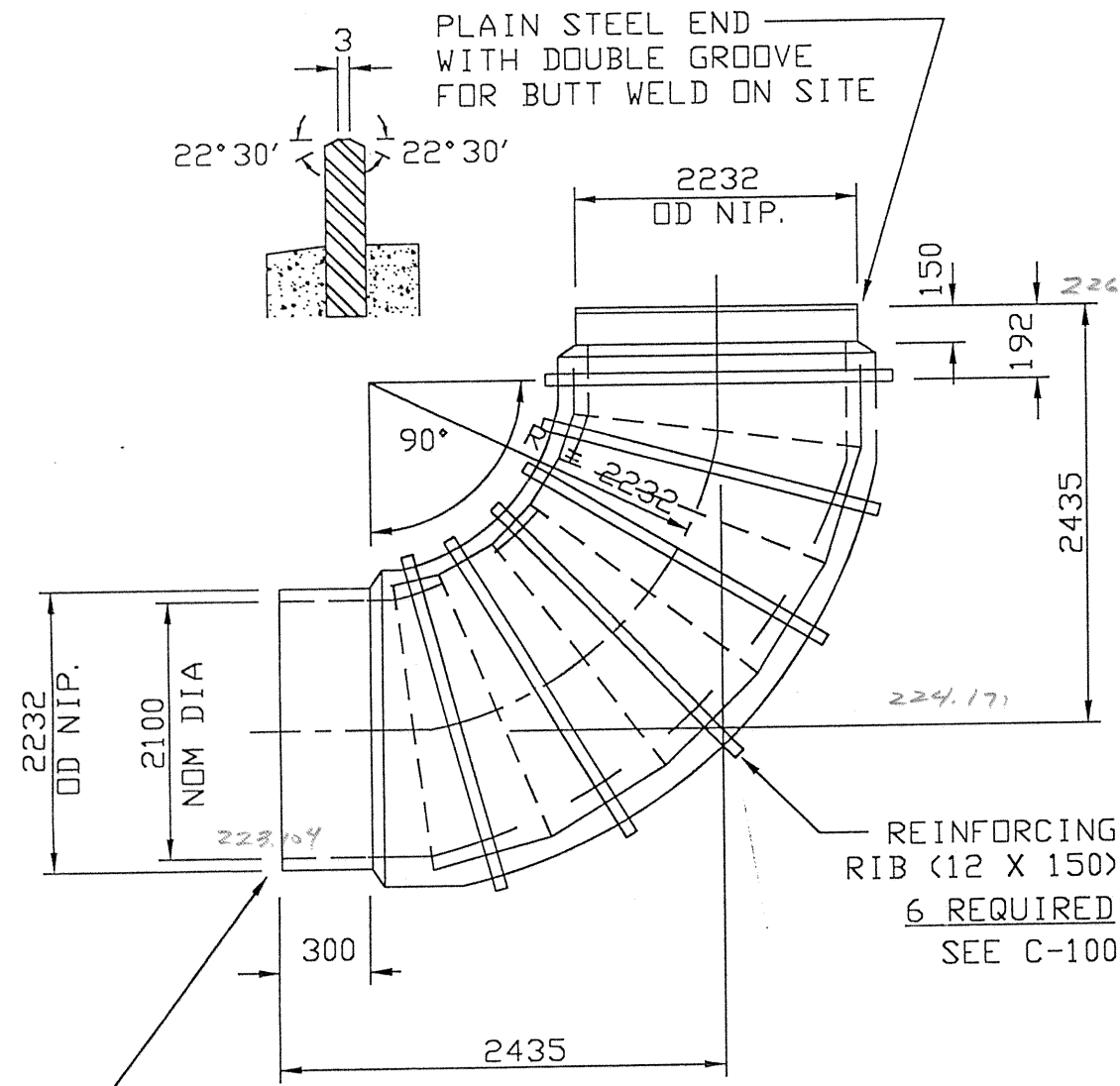


F-4135-BM



PLAIN STEEL END
WITH DOUBLE GROOVE
FOR BUTT WELD ON SITE

2232
OD NIP.

2100
NOM DIA

2232
OD NIP.

150

192

223.645

90°

R
2232

2435

224.171

223.104

REINFORCING
RIB (12 X 150)
6 REQUIRED
SEE C-100

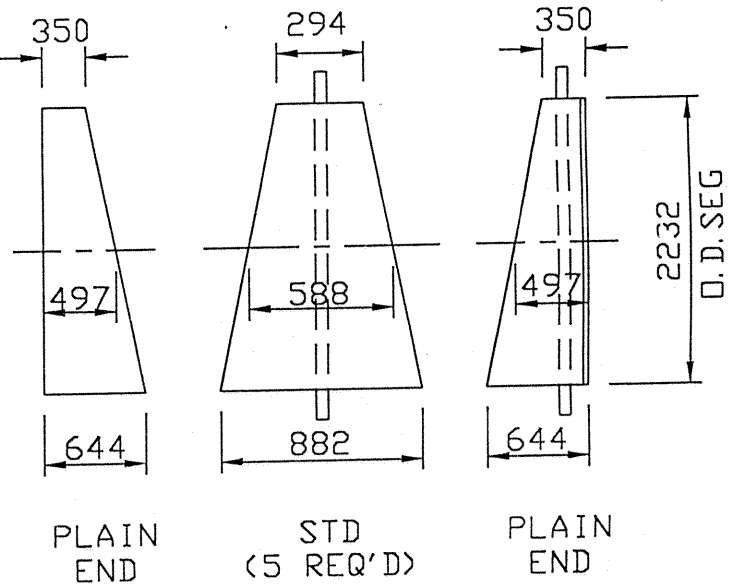
300

2435

TYPE 50 CEMENT INSIDE & OUTSIDE

PLAIN STEEL END
FOR BUTT WELD
AND FIELD TRIM
ON SITE

SPECIFICATION : AWWA C301(E)
TYPE : "B"
CLASS/PRESSURE : 350 KPA
PLATE THICKNESS : 12
WIRE MESH : } C-100
WALL THICKNESS : }



REV.	DATE:	REVISION	BY:
THIS DRAWING AND ALL TECHNICAL INFORMATION APPEARING HEREON ARE THE PROPERTY OF HYPRESCON INC. AND MUST BE KEPT IN CONFIDENCE BY THE RECIPIENT. THE SAME MAY NOT BE USED OR REPRODUCED EITHER IN WHOLE OR IN PART WITHOUT THE EXPRESS CONSENT OF HYPRESCON INC., WHICH RESERVES ALL RIGHTS OF COPYRIGHT.			
HYPRESCON inc.			
WINNIPEG - P.D. 95-2			
DETAIL OF MK: 30			
SCALE: NOT TO SCALE		DATE: 95/05/02	
DRAWN SZ	CHECKED <i>[Signature]</i>	APPROVED <i>[Signature]</i>	PROJECT 9007-95
			DWG. REV. C-30