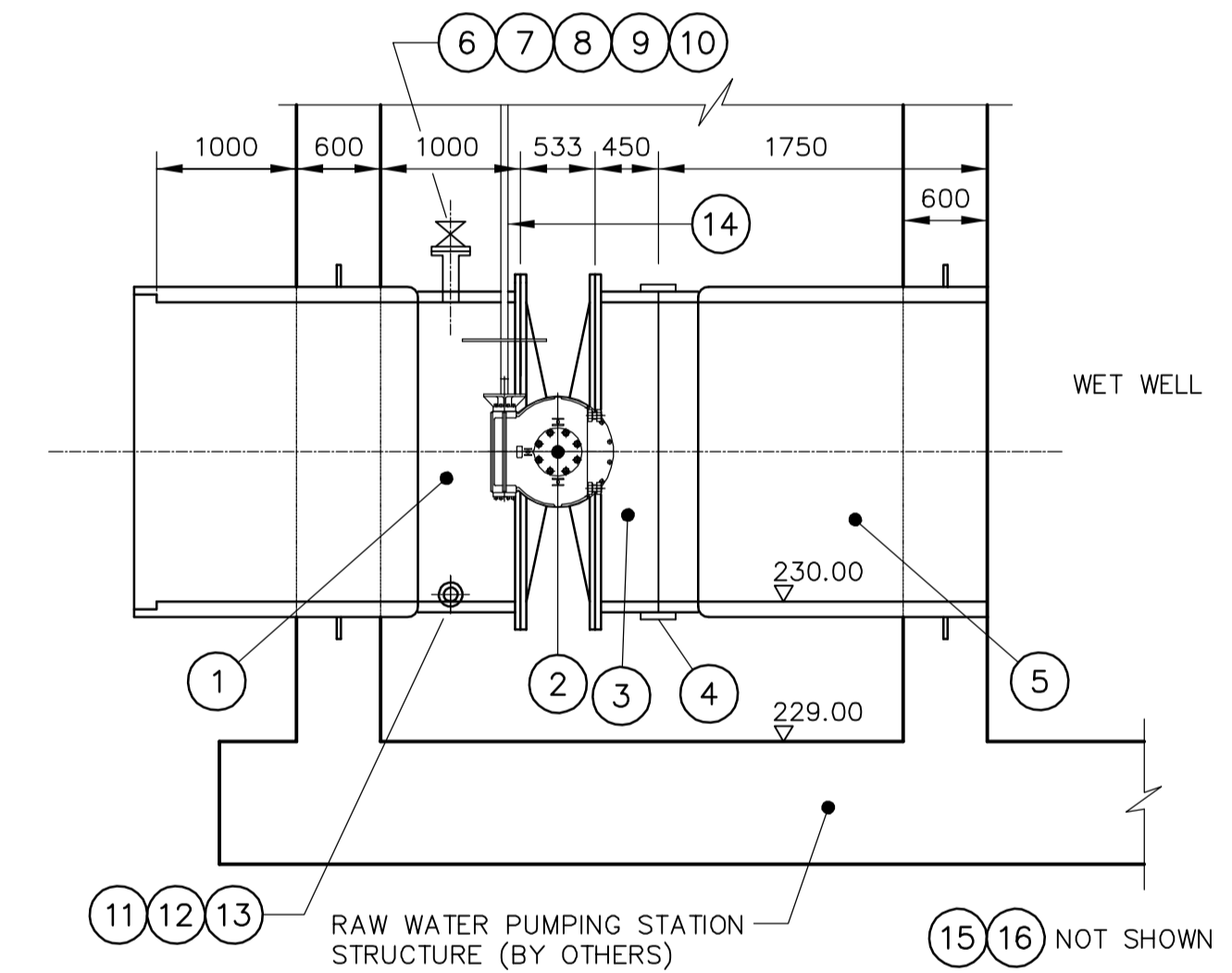
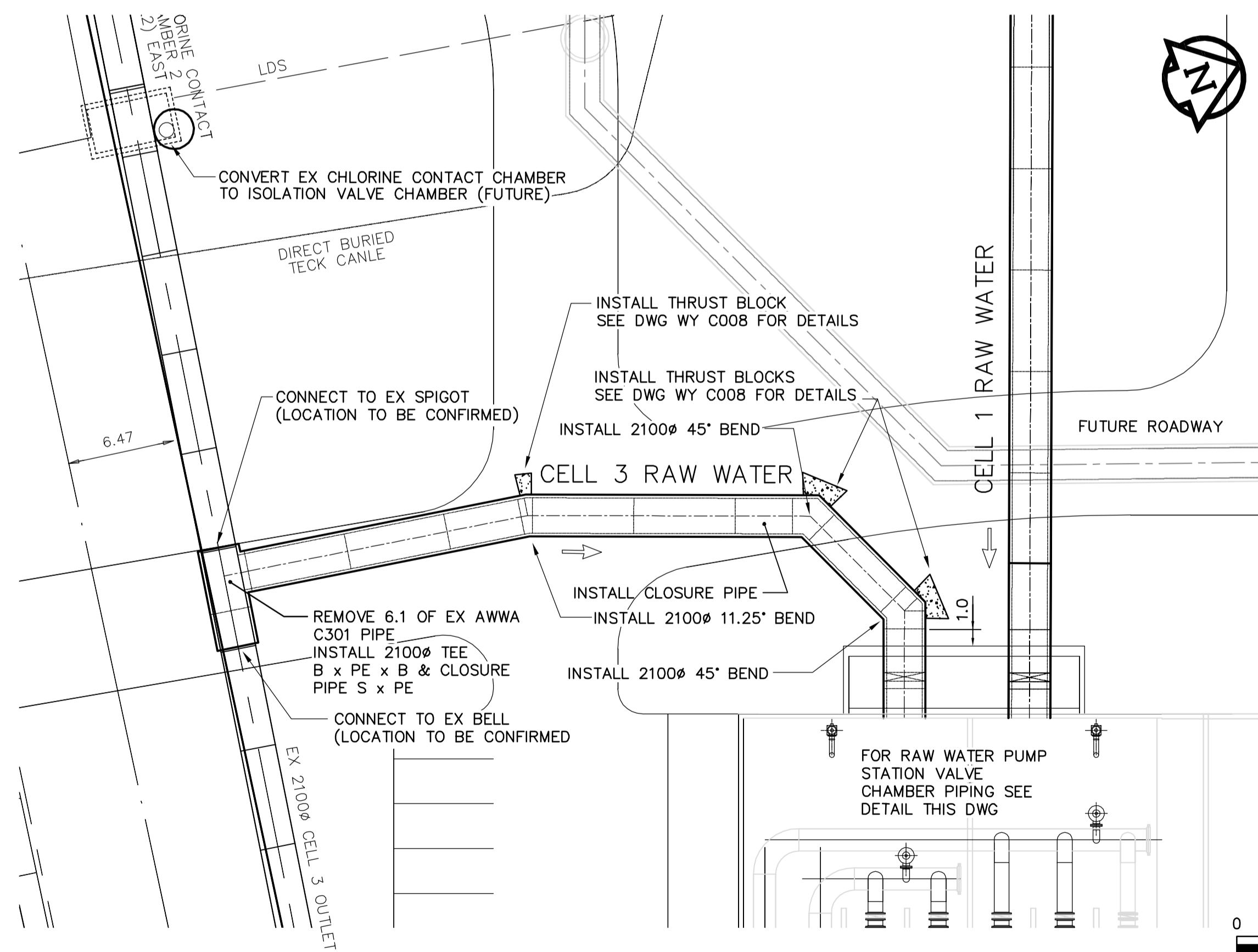
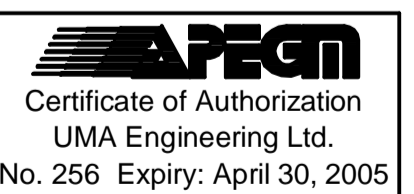


CHAINAGE ALONG C OF 2133mm PIPE



RAW WATER PUMPING STATION  
PROPOSED PIPING  
SCALE 1:50

| ITEM | DESCRIPTION   | LENGTH | NUMBER |
|------|---|--------|--------|
| 1    | 2133 WALL PIECE S X PE, CW THRUST FLANGE, 100 BOTTOM TANGENT FLANGED OUTLET (300 FROM FACE OF FLANGE), AND 50 THREADED OUTLET (TOP) | 2600   | 2      |
| 2    | 2133 AWWA C504 BUTTERFLY VALVE (SUPPLY BY OTHERS)   | 533    | 2      |
| 3    | 2133 SPOOL PIECE F X PE   | 450    | 2      |
| 4    | 2133AWWA C219 BOLTED SLEEVE COUPLER (250X 12THICK SLEEVE)   | -      | 2      |
| 5    | 2133 WALL PIECE PE X PE C/W THRUST FLANGE   | 1750   | 2      |
| 6    | 50 SCHEDULE 80 STEEL NIPPLE (THREADED)  | 125    | 2      |
| 7    | 50 STEEL FLANGE CL 125 (THREADED) C/W ISOLATION KIT   | 2      | 2      |
| 8    | 50 CAST BRONZE OR BRASS FLANGE (THREADED)   | 2      | 2      |
| 9    | 50 CAST BRONZE OR BRASS NIPPLE (THREADED)   | 125    | 2      |
| 10   | 50 BRONZE GATE VALVE (THREADED)   | 2      | 2      |
| 11   | 100 X 75 CAST BRONZE OR BRASS REDUCING FLANGE C/W INSULATING KIT  | 2      | 2      |
| 12   | 75 CAST BRONZE OR BRASS NIPPLE (THREADED)   | 125    | 2      |
| 13   | 75 BRONZE GATE VALVE (THREADED)   | 2      | 2      |
| 14   | 50 VALVE STEM EXTENSION (SUPPLY BY OTHERS)  | 2      | 2      |
| 15   | VALVE STEM GUIDE  | 2      | 2      |
| 16   | ELECTRIC VALVE ACTUATOR AND STAND (SUPPLY BY OTHERS)  | 2      | 2      |



|                                  |  |  |                          |                                |  |  |  |
|----------------------------------|--|--|--------------------------|--------------------------------|--|--|--|
| B.M. ELEV.                       |  |  |                          | ENGINEER'S SEAL                |  |  |  |
|                                  |  | © 2005 UMA ENGINEERING LTD. ALL RIGHTS RESERVED. |                          | ORIGINAL SIGNED BY             |  | WINNIPEG WATER TREATMENT PROGRAM<br>CONSTRUCTION OF YARD PIPING AND VALVE CHAMBERS |  |
|                                  |  | DESIGNED BY: MGM                                 | CHECKED BY: CCM          | C. C. MACEY                    |  | CITY FILE NUMBER   |  |
|                                  |  | DRAWN BY: Wjd                                    | APPROVED BY: Bryan Weber | 2005/04/14                     |  | -  |  |
| O ISSUED FOR TENDER 05/04/14 Wjd |  | HOR. SCALE: 1:250                                |                          | RELEASED FOR CONSTRUCTION BY:  |  | SHEET 1 OF 1   |  |
| A ISSUED FOR REVIEW 05/04/06 Wjd |  | VERTICAL SCALE: 1:50                             |                          | R. A. Sorokowski               |  | CITY DRAWING NUMBER  |  |
| NO. REVISIONS                    |  | DATE   |                          | DATE                           |  | 1-0601Y-C-C0003-001-00D  |  |
|                                  |  | 2005/03/24                                       |                          | April 17, 2005                 |  | CIVIL  |  |
|                                  |  |  |                          | CONSULTANT DRAWING NO. WY C003 |  | CELL 3 RAW WATER - PLAN & PROFILE  |  |
|                                  |  |  |                          |                                |  | EXISTING 2100mm PIPE TO THE RAW WATER PUMPING STATION                              |  |