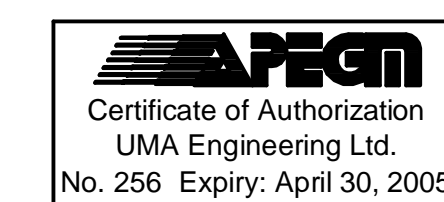
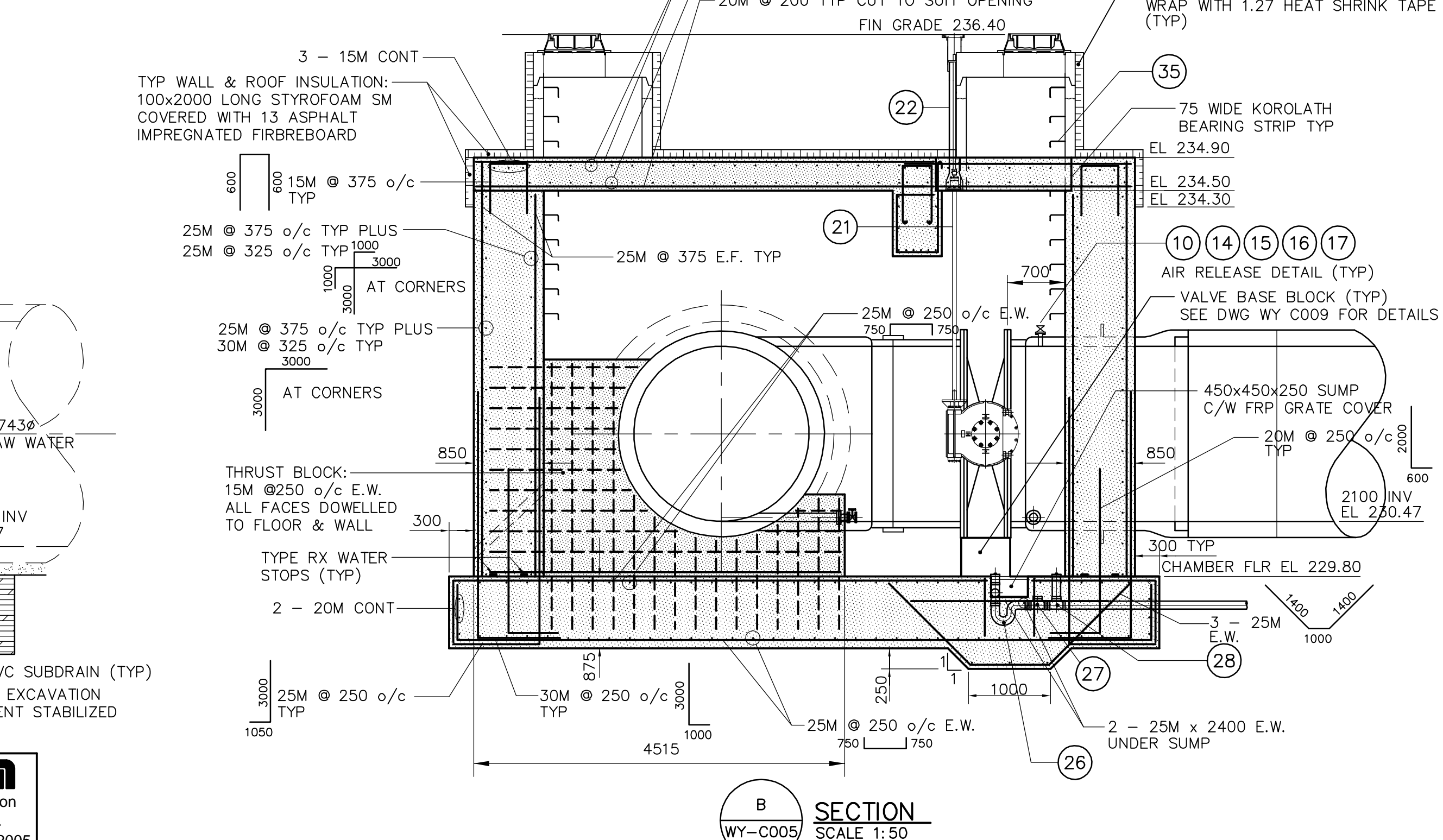
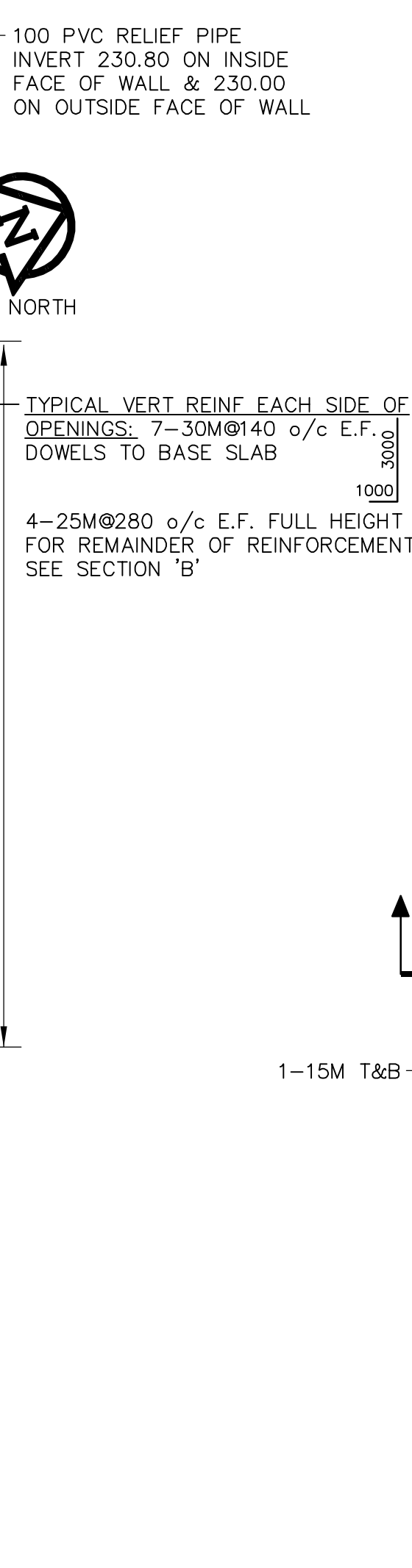
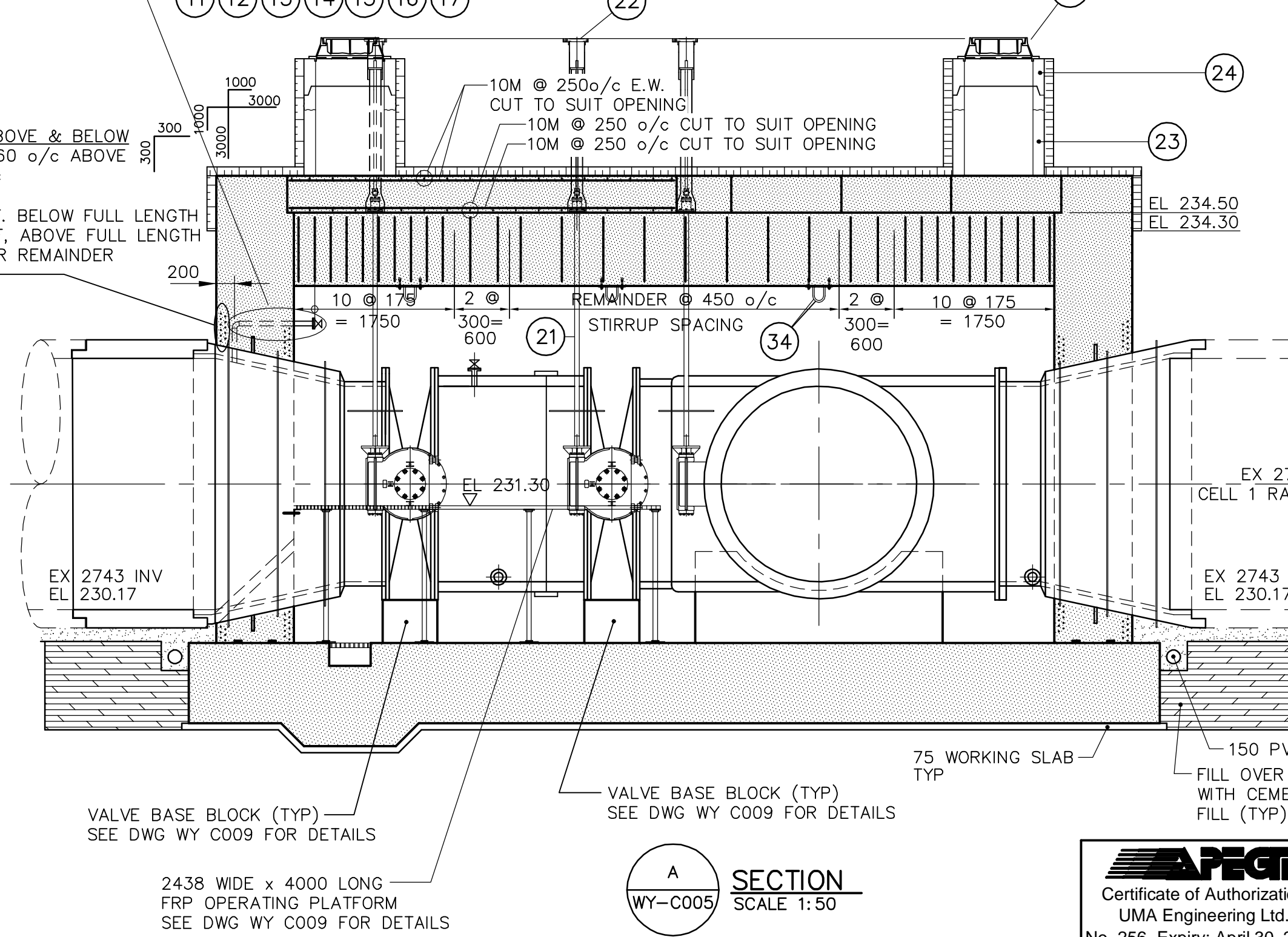
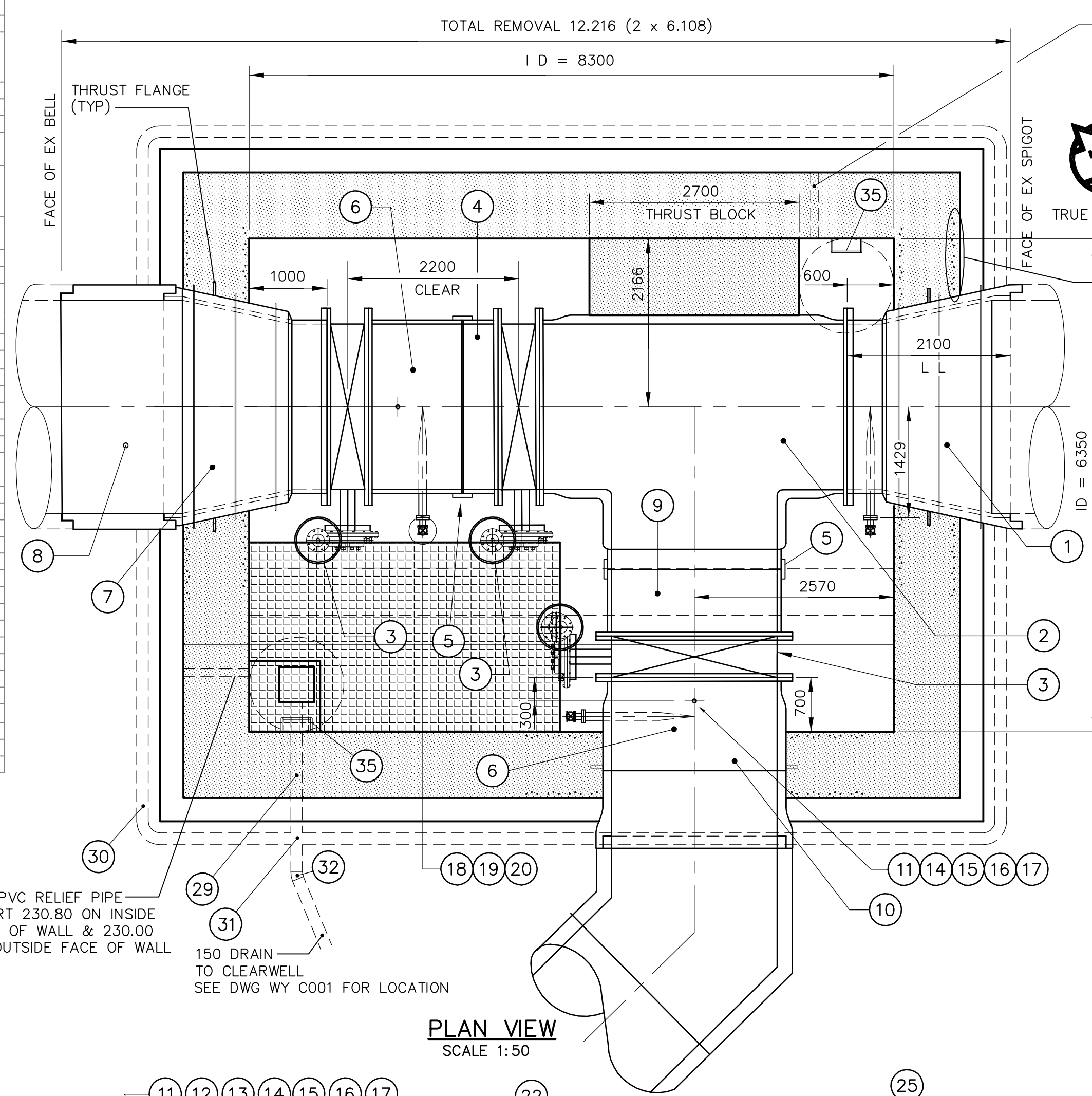
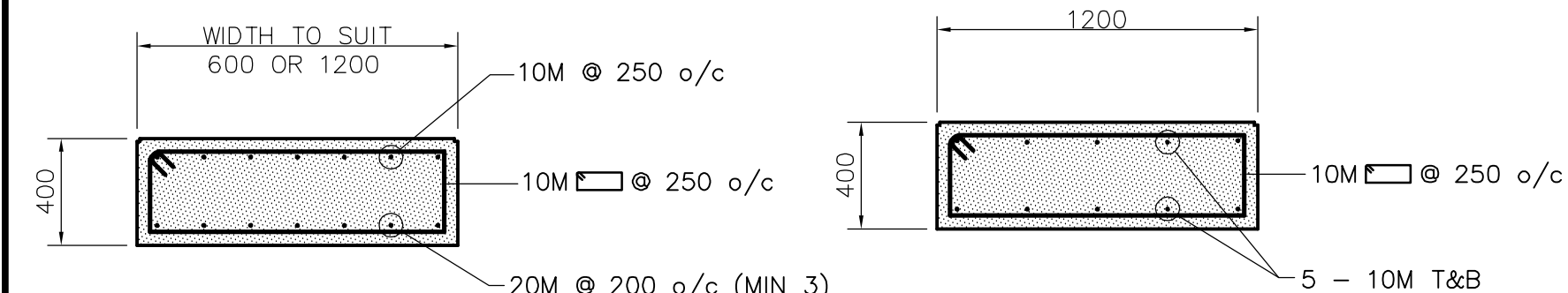
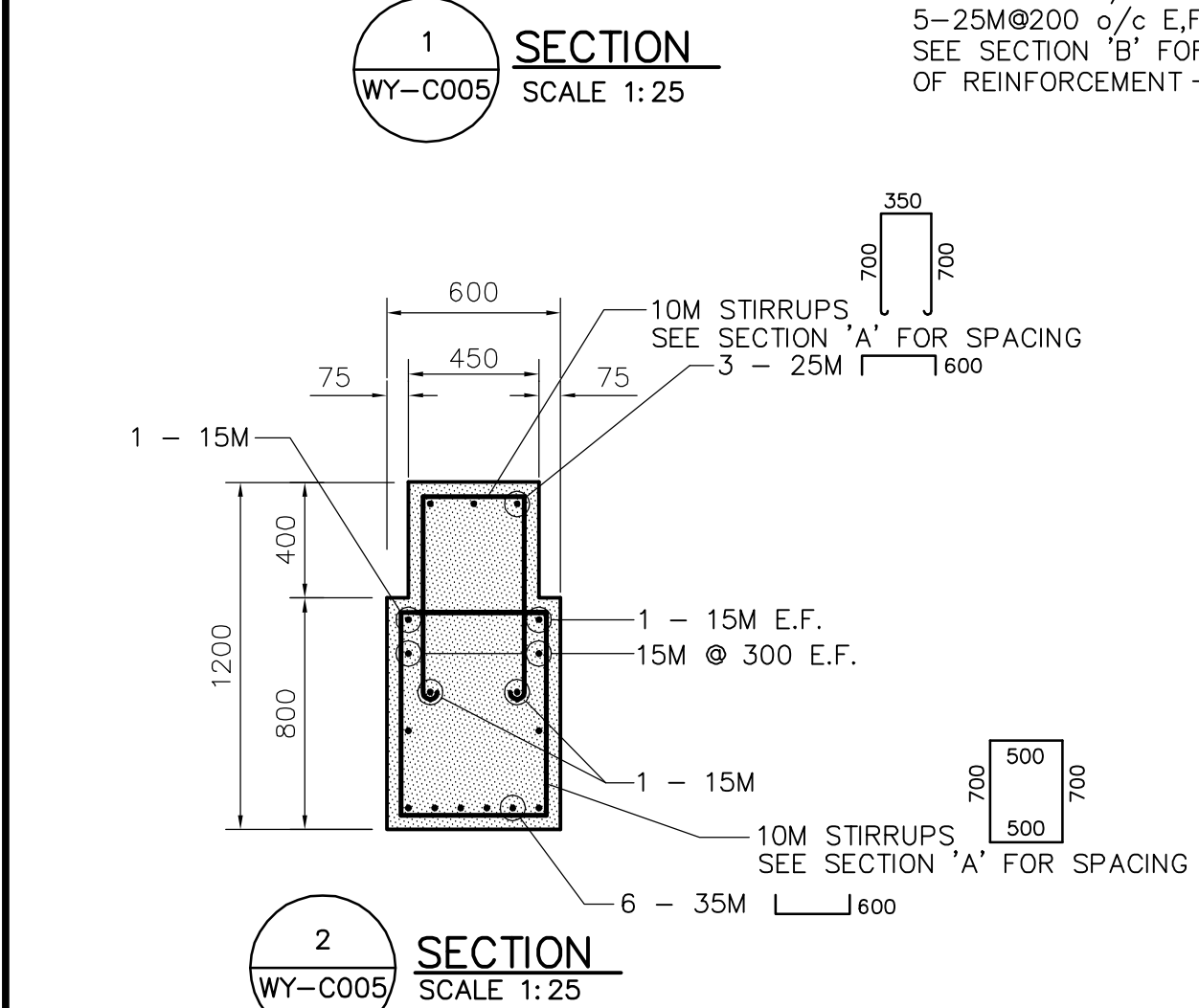
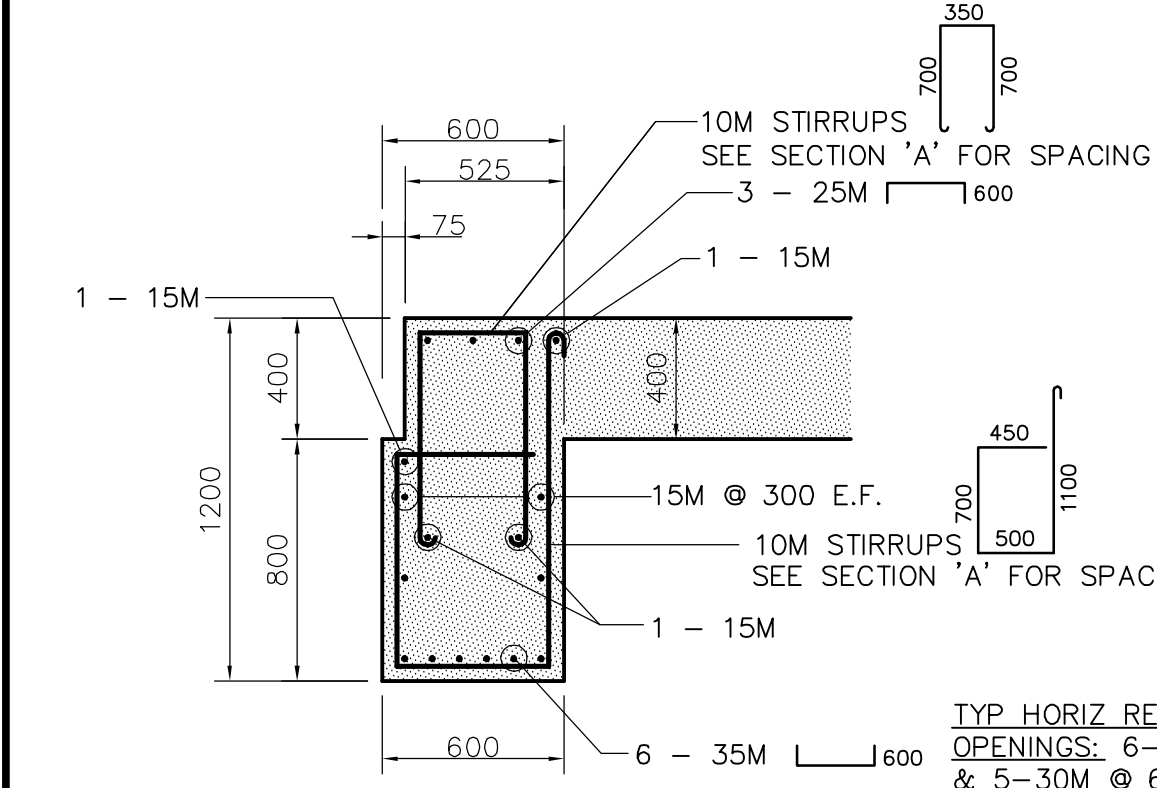


ITEM	DESCRIPTION	LENGTH	NUMBER
1	2743 X 2133 AWWA C301 CONCENTRIC REDUCER, SXF, CW THRUST FLANGE, 100 BOTTOM TANGENT FLANGED OUTLET (300 FROM FACE OF FLANGE), AND 50 THREADED OUTLET (TOP)	2100	1
2	2133 AWWA C301 TEE F X F PE	3938	1
3	2133 AWWA C504 BUTTERFLY VALVE (BY OTHERS)	533	3
4	2133 SPOOL PIECE F X PE + 300 TRIM ALLOWANCE	450	1
5	2133 AWWA C219 BOLTED SLEEVE COUPLER (2501 X 12 THICK SLEEVE)		2
6	2133 SPOOL PIECE F X PE, CW 100 BOTTOM TANGENT FLANGED OUTLET (500 FROM FACE OF FLANGE) AND 50 THREADED OUTLET (TOP)	1200	1
7	2743 X 2133 AWWA C301 CONCENTRIC REDUCER, BXF, CW THRUST FLANGE, AND 50 THREADED OUTLET (TOP)	2100	1
8	2743 AWWA C301 PIPE SHORT SXB	To Suit	1
9	2133 SPOOL PIECE F X PE, + 300 TRIM ALLOWANCE	860	1
10	2133 WALL PIECE F X B, CW THRUST FLANGE, 100 BOTTOM TANGENT FLANGED OUTLET (300 FROM FACE OF FLANGE), AND 50 THREADED OUTLET (TOP)	2200	1
11	50 SCHEDULE 80 STEEL NIPPLE (THREADED)	200	3
12	50 STEEL 90° ELBOW (THREADED)	-	1
13	50 SCHEDULE 80 STEEL NIPPLE (THREADED)	800	1
14	50 STEEL FLANGE CL 125 (THREADED) CW ISOLATION KIT	-	3
15	50 CAST BRONZE OR BRASS FLANGE (THREADED)	-	3
16	50 CAST BRONZE OR BRASS NIPPLE (THREADED)	125	3
17	50 BRONZE GATE VALVE (THREADED)	-	3
18	100 X 75 CAST BRONZE OR BRASS REDUCING FLANGE CW INSULATING KIT	-	3
19	75 CAST BRONZE OR BRASS NIPPLE (THREADED)	125	3
20	75 BRONZE GATE VALVE (THREADED)	-	3
21	50 VALVE STEM EXTENSION	TO SUIT	3
22	STD CITY OF WINNIPEG VALVE BOX PVC RISER	2	2
23	1200 PRECAST MANHOLE RISER	TO SUIT	2
24	1200X 750 PRECAST MH FLATTOP REDUCER	-	2
25	STD CITY OF WINNIPEG MANHOLE FRAME AND SOLID COVER	-	2
26	100 PVC DIVV 'P' TRAP AND DRAIN CW TEE & 250X 100 PVC DRAIN	-	1
27	100 BACKWATER VALVE	-	1
28	100 PVC CLEANOUT	-	1
29	100 DRAIN	-	1
30	150 SUBDRAIN	40 m	1
31	150 DOUBLE 'Y' CW 150 TO 100 REDUCER	-	1
32	150 22.5° PVC BEND	-	1
33	REMOVABLE SLAB LIFTING LUG	-	32
34	U-BOLT LIFTING HOOKS	-	3
35	STANDARD CITY OF WINNIPEG DRIVE IN ALUMINUM STEPS	-	44

NOTE: REDUCER ⑦ & PIPE SHORT ⑧ MAY BE COMBINED INTO A SINGLE PIPE



B.M. ELEV.		ENGINEER'S SEAL	
		ORIGINAL SIGNED BY	S. B. BISWANGER
		DATE	2005/04/15
		CONSULTANT DRAWING NO.	WY C005
DESIGNED BY: MGM/SBB CHECKED BY: SBB DRAWN BY: Wjd APPROVED BY: Bryan Weber		<b>THE CITY OF WINNIPEG</b> WATER AND WASTE DEPARTMENT ENGINEERING DIVISION WINNIPEG WATER TREATMENT PROGRAM CONSTRUCTION OF YARD PIPING AND VALVE CHAMBERS	
O ISSUED FOR TENDER 05/04/15 Wjd A ISSUED FOR REVIEW 05/04/06 Wjd NO. REVISIONS DATE BY		CITY FILE NUMBER: - SHEET 1 OF 1 CITY DRAWING NUMBER: I-0601Y-C-C0005-001-00D	
HOR. SCALE: AS NOTED VERTICAL SCALE: AS NOTED DATE: 2005/03/24		RELEASED FOR CONSTRUCTION BY: R. A. Sorokowski DATE: April 17, 2005	