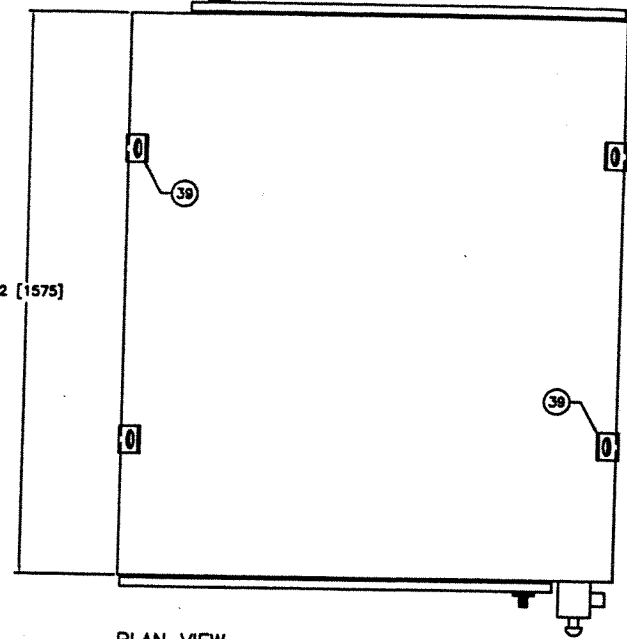
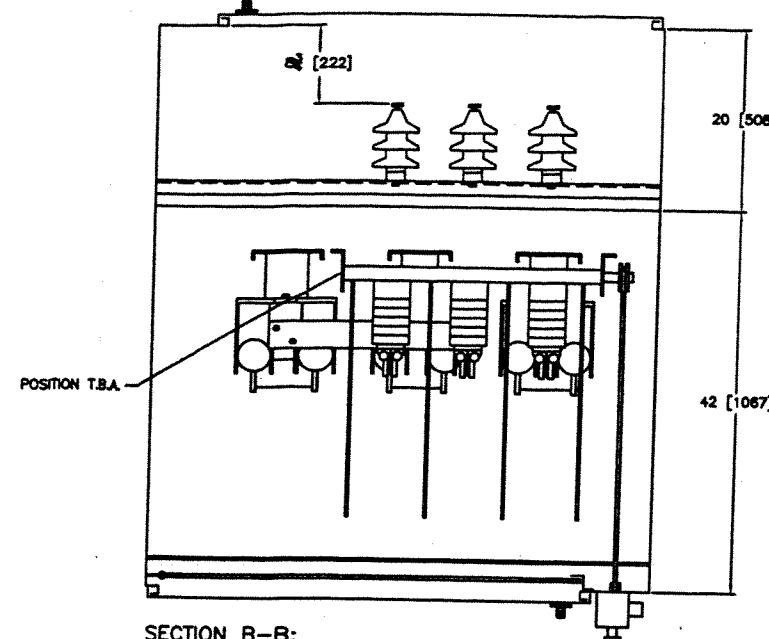


GENERAL NOTES:

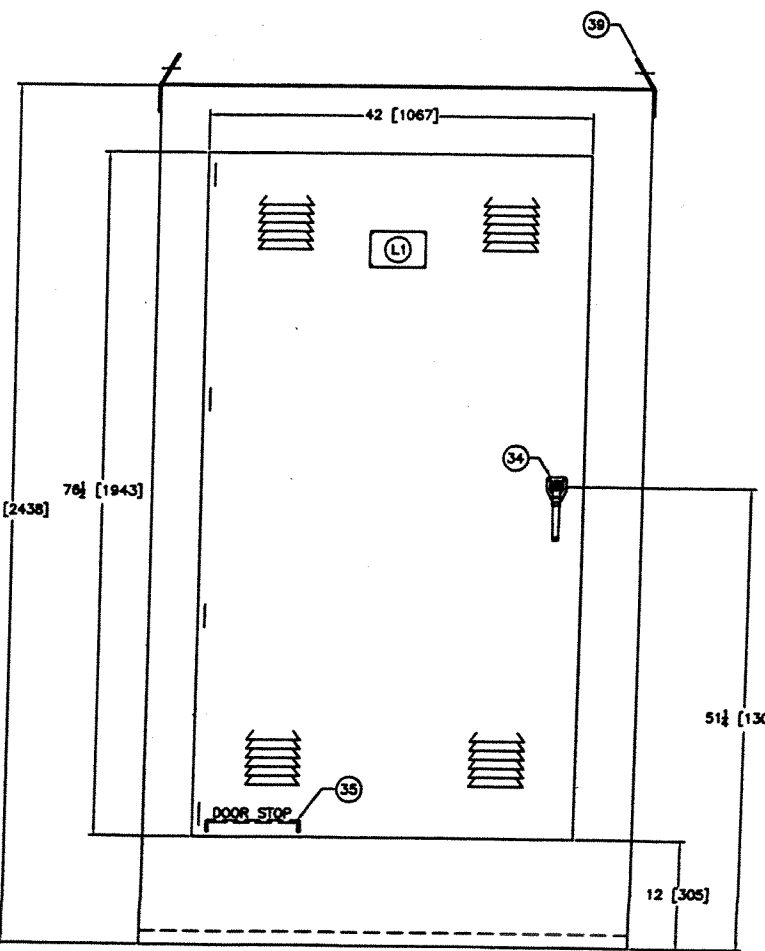
- CONSTRUCT METAL ENCLOSURE USING 11GA. SATIN COAT STEEL - PADMOUNT.
CONSTRUCT IAW JSTD-006 R01: ENCL. TYPES-CSA3R.
- FINISH:**
 - COAT '638-682' HERCULON PRIMER
 - COATS 'H60AK2062' ASA #61 GREY ENAMEL
JRS OUTDOOR B FINISH IAW JSTD-022 R01.
- MINIMUM 5KV CSA CLEARANCES IAW CAN/CSA-C22.2 NO.31-M89:**
 - TO Ø: 3/4"
 - TO GRD.: 2 1/2"
 - TO Ø OVER SURFACE: 4"
 - TO GRD. OVER SURFACE: 3"
- ALL BUS BAR FREE OF SHARP CORNERS/EDGES,
BUFFED TO SMOOTH IAW JSTD-001 R00.
- USE GRADE 5 NUTS & BOLTS.
- BUS-TO-BUS CONNECTION:**
BOLT, BELLVILLE WASHER, & NUT.
- LUG-TO-BUS CONNECTION:**
BOLT, BELLVILLE WASHER, & NUT.
- BUS-TO-INSULATOR CONNECTION:**
BOLT, USS WASHER, & LOCKWASHER.
- ALL OUTER COVERS & OPENINGS c/w 1/8" NEOPRENE GASKET.



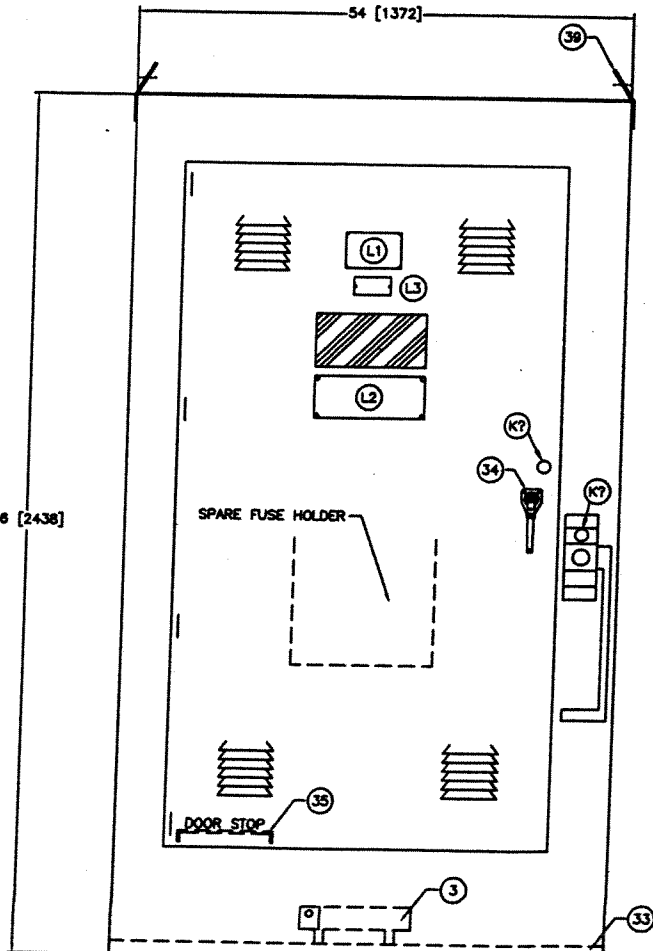
PLAN VIEW



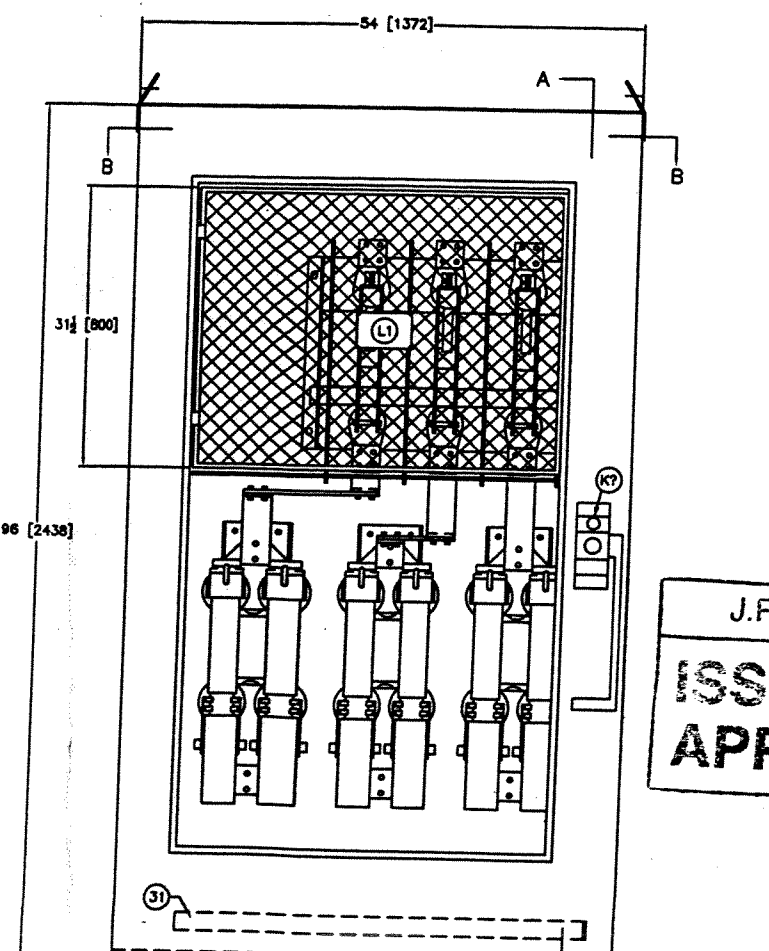
SECTION B-B:
SCALE: N.T.S.



REAR ELEVATION



FRONT ELEVATION



FRONT ELEVATION:
LESS OUTER DOOR

ITEM	QTY.	MATERIAL
1	1	S&C #34020R3 1200A 5kv MINI-RUPTER LOAD BREAK SWITCH 5.5KV MAX, 60KV BIL, 3-POLE, MAIN CONTACT ON TOP c/w: (3) - TYPE SM-5 #18750R4 FUSE MOUNTS (6) - #86641R2 TYPE #SM-5S DISCONNECT POWER FUSE HOLDERS (6) - #130600R4 SM5 5kv 400E FUSE REFILLS (720E OVERALL)
2	3	3kv DISTRIBUTION CLASS LIGHTING ARRESTERS
3	1	CALORITECH #PXFT400 HEATER C/W STAT 120V, 400WATT
ITEM	QTY.	MATERIAL
30	6	#6350-S10 3-1/2" 5kv INSULATORS
31	LOT	CBT142 1/2" x 2" COPPER BUS BAR, TIN PLATED
32	LOT	CBT383 3/8" x 3" COPPER BUS BAR, TIN PLATED
33	LOT	C3 x 4.1 3" CHANNEL IRON
34	2	#940-671-5051 PADLOCKABLE HANDLE #940-CAM-WL-LH 3PT. CAM #940-STANDOFF FOR 3PT. CAM (2) - #940-ROD-48 48" RODS (2) - #940-RG-112 ROD GUIDES
35	2	#920-DSR-01 DOOR STOP ROD #920-DSB-01 DOOR STOP BRACKET #940-RG-01 DOOR STOP ROD HOLDER
36	8	#940-HINGE3-WL HINGES FOR 5/16" x 3" BOLT C/W (B) - #BOLT-5163-GR5 5/16" x 3" HEX HD BOLT
37	1	DATAPKTLGE DATA POCKET - LARGE
38	2	#AU-250UL ILSCO TWIN GROUND LUGS
39	4	#910-LIFTHOOK-A 3" x 7" ANGLE, REMOVABLE LIFTING HOOKS c/w (4) - #910-NUTP12-01 WELD NUT PLATES
ITEM	QTY.	LABELS
L1	3	JRS N-21 NAMEPLATES: "DANGER 5000V"
L2	1	JRS N-31 NAMEPLATE: "WARNING: DO NOT SERVICE SWITCHGEAR UNLESS ALL CONDUCTORS HAVE BEEN GROUNDED ACCORDING TO AN ACCEPTABLE SAFETY PROCEDURE"
L3	1	JRS N-3 CSA SWITCHGEAR RATING NAMEPLATE: "1200A 5kv 3Ø 60KV BIL 60Hz. S/N: 18979 ENCL-3R"

J.R. STEPHENSON MFG LTD
ISSUED FOR APPROVAL
DATE: APR 27 2005

REFERENCE COPY

THE INFORMATION CONTAINED IN THIS DRAWING IS DEEMED PROPRIETARY TO J.R. STEPHENSON MFG. LTD IT MAY BE USED ONLY FOR THE PURPOSE FOR WHICH IT WAS SUBMITTED AND MAY NOT BE COPIED IN WHOLE OR IN PART WITHOUT PRIOR WRITTEN CONSENT FROM AN AUTHORIZED OFFICER OF J.R. STEPHENSON MFG. LTD.

C	RE-ISSUED FOR INFORMATION: AS PER ENGINEER'S REQUEST	LP	APR27.05	DRAWING TITLE	PROJECT	CUSTOMER	PROJ. CO. ENGINEERING	DIMENSIONS: INCHES UNLESS OTHERWISE NOTED	
B	ISSUED TO SHOP/ISSUED FOR INFORMATION ONLY	LP	APR20.05	1200A 5KV LOAD BREAK SWITCH	CITY of WPG. - WATER & WASTE DEPT.	WESCO	DRWN	SCALE	DRAWING No.
A	ISSUED FOR APPROVAL	LP	APR13.05	CSA ENCL-3R PADMOUNT	DEACON PUMP STATION		L.PAGTAKHAN	N.T.S.	ORDER No.
No.	REVISION	BY	DATE				MODIFIED	AUTOCAD 2002	18979
								ACAD FILE No.	REV
								18979	SHT. 1 of 2
									C



J.R. STEPHENSON MFG. LTD.
ISO 9001:2000 CERTIFIED
1425 WRYTE AVE.
WINNIPEG, MANITOBA, CANADA
PHONE: (204) 775-8561 FAX: (204) 786-2481