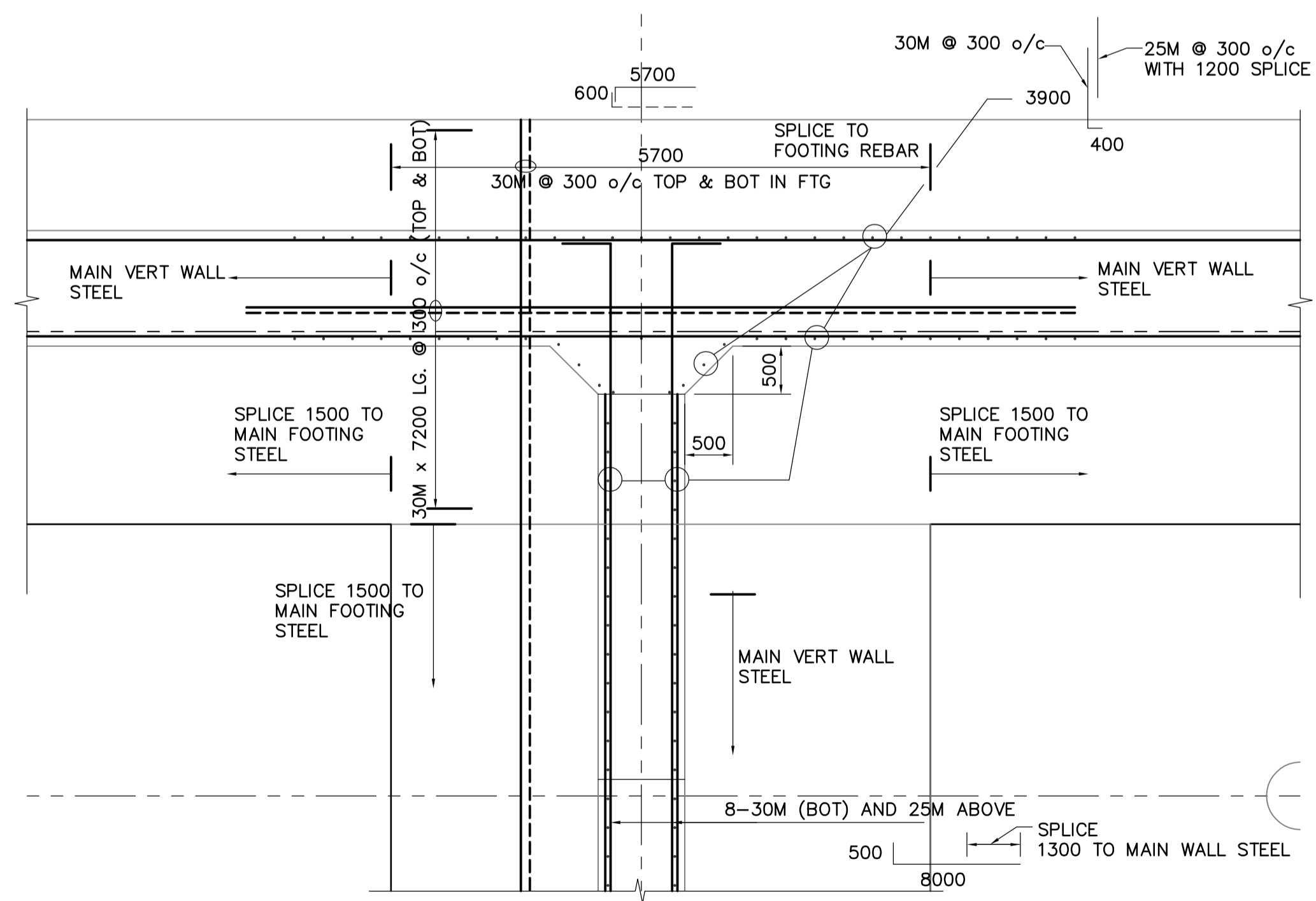
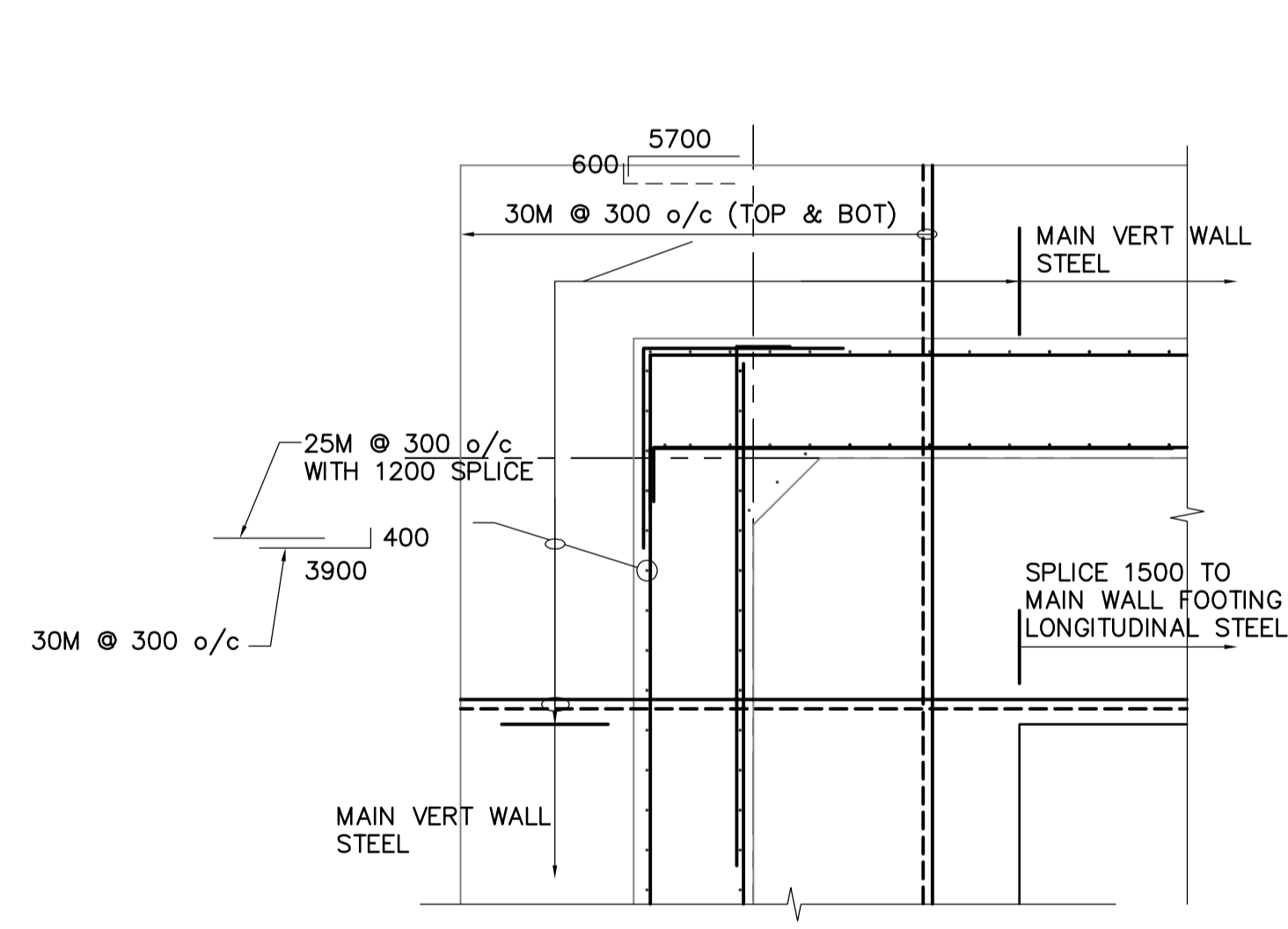


**FOUNDATION SLAB REINFORCING PLAN**  
1:150



**A TYPICAL FOOTING REINFORCING AT INTERSECTION**  
WT-S010 1:20  
- AT GRID LINES TA & T10, TD & T13.



**B TYPICAL WALL REINFORCING AT CORNER**  
WT-S010 1:20  
- AT GRID LINES TA & T1, TA & T13, TN & T13.

- DRAWING NOTES:
1. REFER TO DRAWING WT-S001 FOR GENERAL NOTES.
  2. REFER TO DRAWING WT-S002 FOR GRID LINE DIMENSIONS.
  3. REFER TO DRAWING WT-S020 FOR EXPANSION AND CONSTRUCTION JOINT DETAILS.

**APEGM**  
Certificate of Authorization  
Earth Tech Canada Inc.  
No. 730 Expiry: April 30, 2005

B.M. ELEV.		<b>CH2MHILL</b>	<b>EarthTech</b> A Tyco International Ltd. Company	ENGINEER'S SEAL
		Frederickson Cooper ARCHITECTS		ORIGINAL SIGNED BY
		DESIGNED BY: FK	CHECKED BY: MK	F.A. KEMP & R.B. ERIC 2005/04/17
		DRAWN BY: C.T.	APPROVED BY: AHL	
		HOR. SCALE: AS NOTED	RELEASED FOR CONSTRUCTION BY: R. SOROKOWSKI	CONSULTANT DRAWING NO. WT-S008
		VERTICAL SCALE:		
00	ISSUED FOR TENDER	05/04/17	C.T.	
	NO. REVISIONS	DATE	DATE	
		2005/02/23	2005-04-17	

**THE CITY OF WINNIPEG**  
WATER AND WASTE DEPARTMENT  
ENGINEERING DIVISION

**WATER TREATMENT PLANT**  
CLEARWELL CONSTRUCTION

STRUCTURAL  
FOUNDATION SLAB REINFORCING PLAN

CITY FILE NUMBER  
SHEET OF  
CITY DRAWING NUMBER  
1-0601T-B-S0008-001-00D