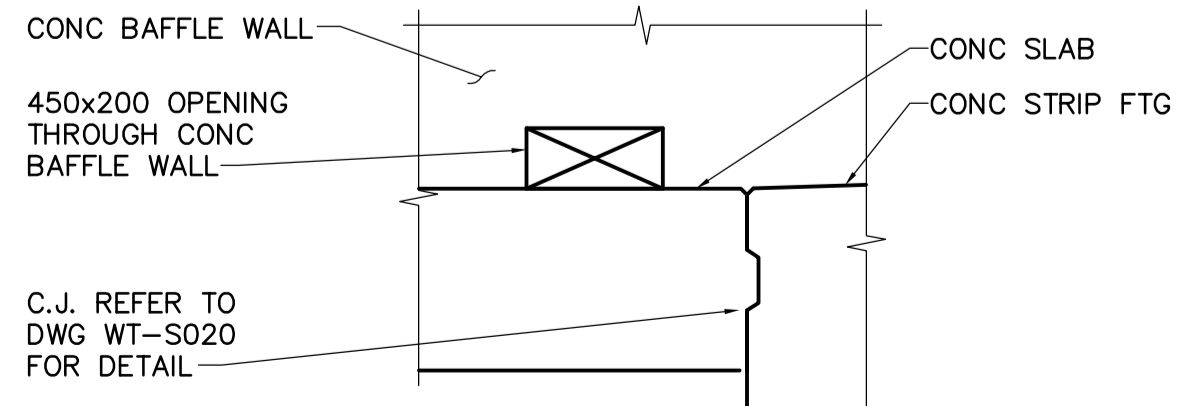


FOUNDATION PLAN
1:200

DETAIL
WT-S007
1:75

- DRAWING NOTES:**
1. REFER TO DRAWING WT-S001 FOR GENERAL NOTES.
 2. REFER TO DRAWING WT-S002 FOR GRID LINE DIMENSIONS.
 3. REFER TO DRAWING WT-S020 FOR EXPANSION AND CONSTRUCTION JOINT DETAILS.
 4. CONSTRUCTION JOINT SPACING FOR THE BAFFLE WALLS IS 3000±.



OPENING THROUGH BAFFLE WALL
1:25

APECM
Certificate of Authorization
Earth Tech Canada Inc.
No. 730 Expiry: April 30, 2005

B.M. ELEV.	NO.	REVISIONS	DATE	BY
	00	ISSUED FOR TENDER	05/04/17	C.T.

CH2MHILL
Frederickson Cooper
ARCHITECTS

EarthTech
A Tyco International Ltd. Company

DESIGNED BY: FK	CHECKED BY: MK
DRAWN BY: C.T.	APPROVED BY: AHL
HOR. SCALE: AS NOTED	RELEASED FOR CONSTRUCTION BY: R. SOROKOWSKI
VERTICAL SCALE:	DATE: 2005-02-15
	DATE: 2005-04-17

ENGINEER'S SEAL
ORIGINAL SIGNED BY
F.A. KEMP
2005/04/17
CONSULTANT DRAWING NO.
WT-S007

THE CITY OF WINNIPEG
WATER AND WASTE DEPARTMENT
ENGINEERING DIVISION

WATER TREATMENT PLANT
CLEARWELL CONSTRUCTION

STRUCTURAL
FOUNDATION FRAMING PLAN

CITY FILE NUMBER
SHEET OF
CITY DRAWING NUMBER
1-601T-B-S0007-001-00D