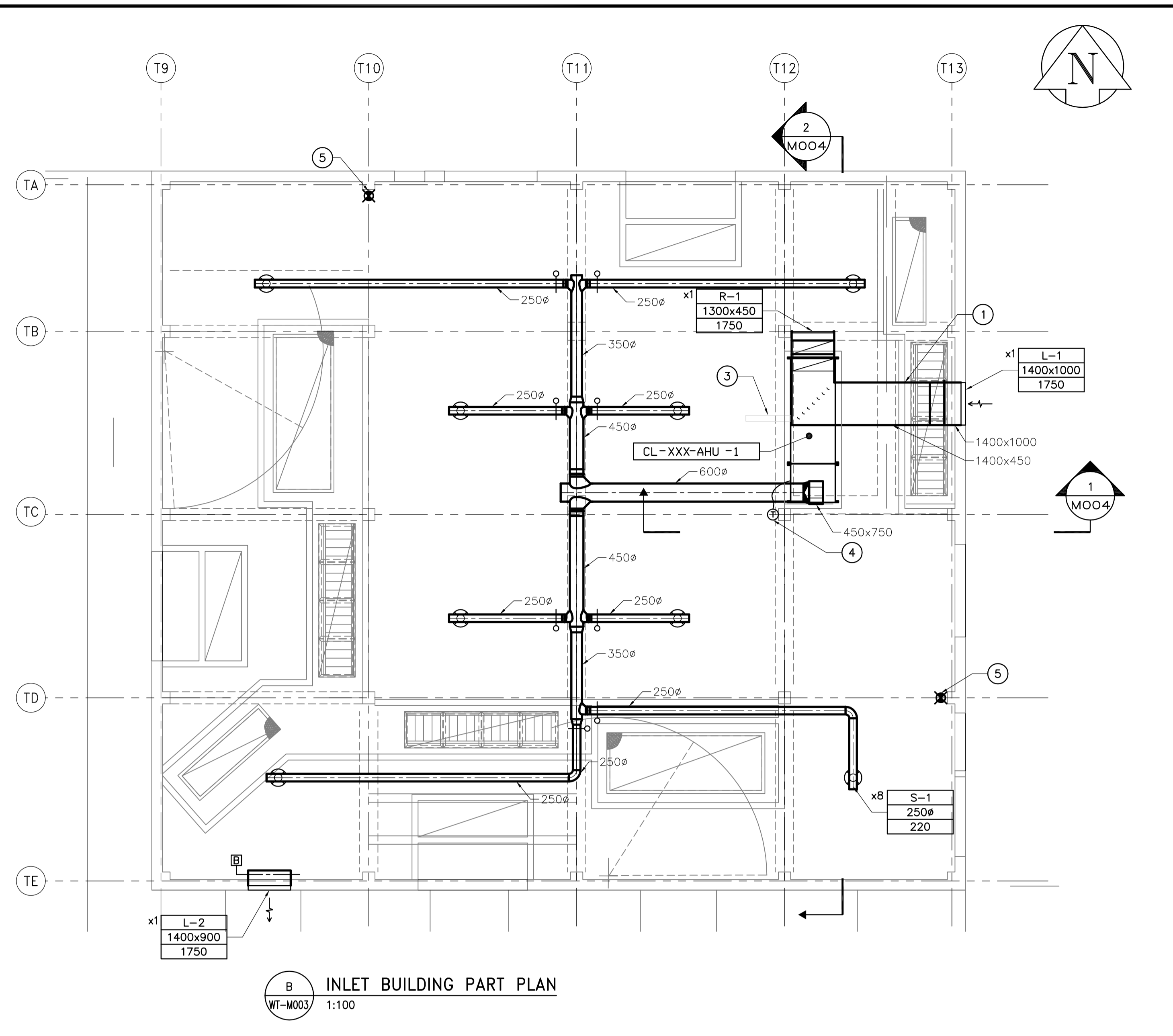


A OUTLET BUILDING PART PLAN
WT-M003 1:50



B INLET BUILDING PART PLAN
WT-M003 1:100

FOR INFORMATION ONLY - NOT IN CONTRACT
(EXCEPT AS NOTED)

DRAWING NOTES

- ① ENTIRE O/A DUCT FROM THE BUILDING WALL TO CL-XXX-AHU-1 SHALL BE THERMALLY INSULATED.
- ② R/A DUCT.
- ③ ENSURE ADEQUATE CLEARANCE TO ALLOW PULLING OUT COILS. ALSO, ALLOW ADEQUATE CLEARANCE FOR GENERAL UNIT MAINTENANCE.
- ④ THERMOSTAT SHALL BE MOUNTED ON CONCRETE COLUMN, 1500-mm ABOVE INSIDE FLOOR LEVEL.
- ⑤ FIRE EXTINGUISHER SHALL BE MOUNTED AS PER LOCAL CODES AND REGULATIONS.

GENERAL NOTES

1. COORDINATE WITH OTHER TRADES SO AS TO PREVENT CONFLICTS.
2. ALL DUCTS SHALL BE PROPERLY SECURED AND SUPPORTED ACCORDING TO APPLICABLE CODES.

B.M. ELEV.	CH2M HILL Frederickson Cooper ARCHITECTS	EarthTech A Total International Ltd. Company	ENGINEER'S SEAL	THE CITY OF WINNIPEG WATER AND WASTE DEPARTMENT ENGINEERING DIVISION	CITY FILE NUMBER
	DESIGNED BY: DC	CHECKED BY:		WATER TREATMENT PLANT CLEARWELL CONSTRUCTION	SHEET OF
	DRAWN BY: DC	APPROVED BY:		MECHANICAL VENTILATION PLAN	CITY DRAWING NUMBER
00 ISSUED FOR TENDER (N.I.C.) 05/04/17 DC	HOR. SCALE: 1:50	RELEASED FOR CONSTRUCTION BY:	CONSULTANT DRAWING NO. WT-M003		
NO. REVISIONS	DATE	DATE	DATE		
	DATE 2005/03/15	DATE	DATE		