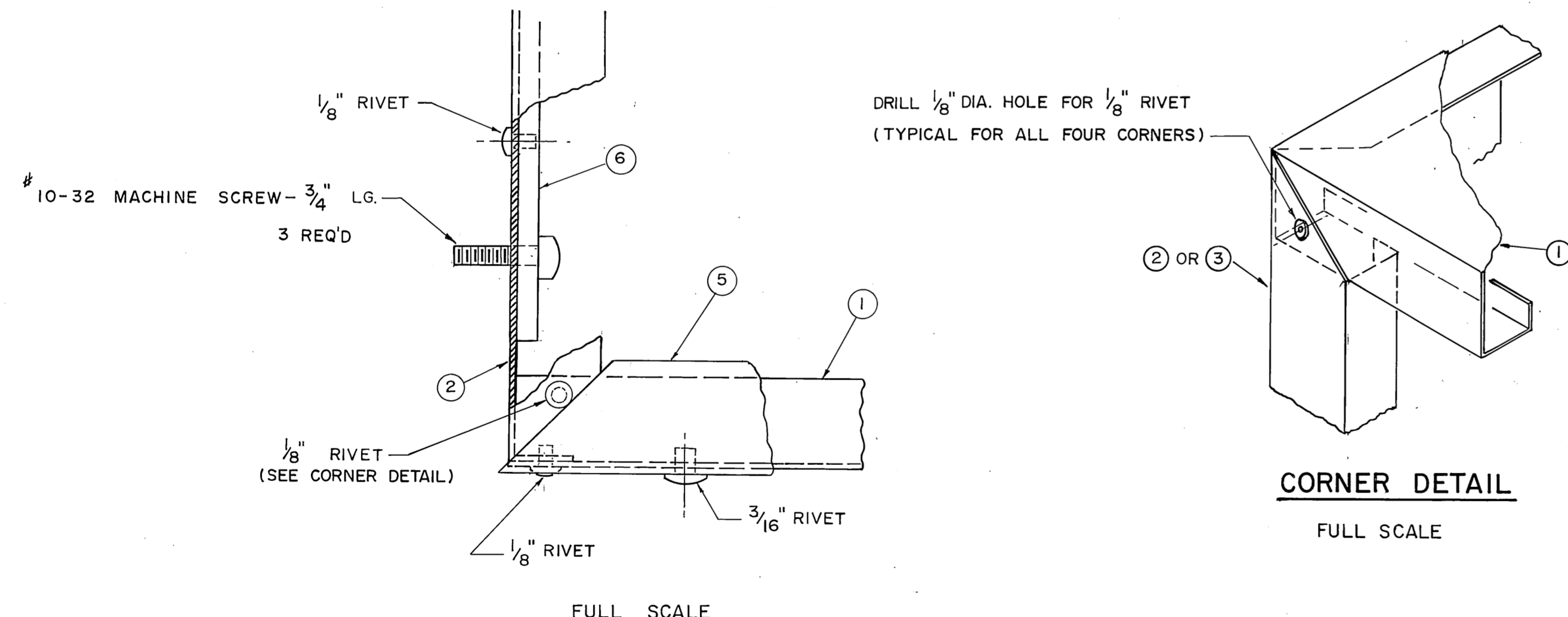
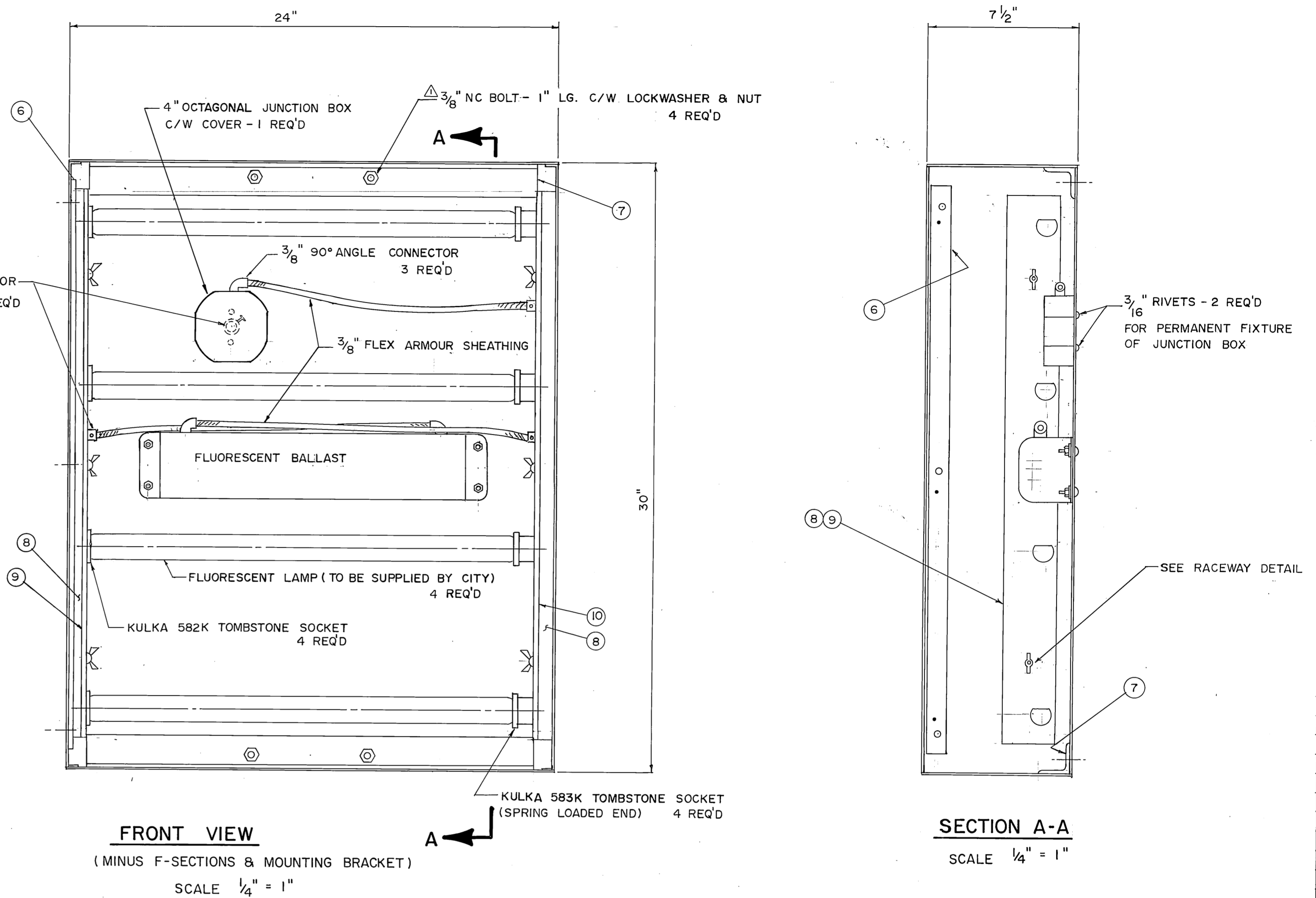


ASSEMBLY
SCALE 3/16" = 1"



CORNER DETAIL
FULL SCALE



FRONT VIEW
(MINUS F-SECTIONS & MOUNTING BRACKET)
SCALE 1/4" = 1"

SECTION A-A
SCALE 1/4" = 1"

NOTES

1. FOR DETAILS OF ① TO ⑩ SEE DWG. M-537, 2 OF 2.
2. FOR MOUNTING HARDWARE USE 10-32 MACHINE SCREWS OR 3/8" HEX-HEAD SCREWS, LOCKWASHERS AND NUTS — ALL STAINLESS STEEL.
3. FOR FLUORESCENT BALLAST USE ALLANSON CAT. NO. 448-BT.
4. ALL INTERIOR METAL SURFACES TO BE PAINTED WITH HIGH GLOSS WHITE. METAL TO BE TREATED OR UNDERCOATED TO ENSURE PAINT ADHESION ACCORDING TO THE PAINT MANUFACTURERS SPECIFICATIONS.
5. LENSES TO BE SUPPLIED BY OTHERS.
6. ALL WIRING TO BE FLEX ARMOUR SHEATHING C/W 3/8" CONNECTORS & ANTI-SHORTS. ALL INTERNAL WIRING (EXCEPT BALLAST & SOCKETS) TO BE 105° C. FLAMENOL WIRE.
7. BALLAST TO BE MOUNTED TIGHT TO PANEL FOR HEAT TRANSFER.
8. UNIT SHALL BE COMPLETELY WIRED, READY FOR USE. FOUR F24T12 CW/HO FLUORESCENT LAMPS SHALL BE SUPPLIED BY THE CITY.
9. USE A CLEAR SILICONE SEALANT THAT WILL WITHSTAND A 140° F. OR 60° C TEMPERATURE. (CANADIAN GENERAL ELECTRIC SILGLAZE N SEALANT OR EQUAL.)

	<p>LOCATION APPROVED</p> <p>UNDERGROUND STRUCTURES COMMITTEE</p> <p>APPROVED BY</p> <p>TRAFFIC SIGNALS ENGINEER _____ DATE _____</p> <p>RELEASED FOR CONSTRUCTION</p> <p>MANAGER OF STREETS & TRAFFIC _____ DATE _____</p> <p>DRAWN BY <i>R.H.</i> 88-03-01 PRELIM. CHK. _____ DATE _____</p>		<p>THE CITY OF WINNIPEG WORKS & OPERATIONS DIVISION STREETS & TRANSPORTATION DEPARTMENT</p>	<p>SCALE As Shown</p>																
<table border="1" style="width: 100%; border-collapse: collapse;"> <thead> <tr> <th style="width: 5%;">NO.</th> <th style="width: 10%;">DATE</th> <th style="width: 85%;">REVISIONS</th> </tr> </thead> <tbody> <tr> <td>5</td> <td>99-12-23</td> <td>REVISED NOTES 4 AND 5, RENUMBERED NOTE 10 TO 9</td> </tr> <tr> <td>4</td> <td>91-04-22</td> <td>REMOVED MOUNTING BRACKET DETAIL</td> </tr> <tr> <td>3</td> <td>90-03-15</td> <td>REVISED 1/8" Ø RIVET HOLES FROM 46 HOLES TO 48 HOLES</td> </tr> <tr> <td>2</td> <td>89-12-06</td> <td>REVISED 3/16" Ø HOLES FROM 2" TO 2 1/2" OFFSET.</td> </tr> <tr> <td>1</td> <td>89-6-26</td> <td>REVISED 3/8" N.C. BOLT FROM 3/4" LG. TO 1" LONG.</td> </tr> </tbody> </table>	NO.	DATE	REVISIONS	5	99-12-23	REVISED NOTES 4 AND 5, RENUMBERED NOTE 10 TO 9	4	91-04-22	REMOVED MOUNTING BRACKET DETAIL	3	90-03-15	REVISED 1/8" Ø RIVET HOLES FROM 46 HOLES TO 48 HOLES	2	89-12-06	REVISED 3/16" Ø HOLES FROM 2" TO 2 1/2" OFFSET.	1	89-6-26	REVISED 3/8" N.C. BOLT FROM 3/4" LG. TO 1" LONG.	<p>INTERNALLY ILLUMINATED 24" x 30" KEEP RIGHT SIGN ASSEMBLY DRAWING</p>	<p>DRAWING NO. M-537</p> <p>1 of 2</p>
NO.	DATE	REVISIONS																		
5	99-12-23	REVISED NOTES 4 AND 5, RENUMBERED NOTE 10 TO 9																		
4	91-04-22	REMOVED MOUNTING BRACKET DETAIL																		
3	90-03-15	REVISED 1/8" Ø RIVET HOLES FROM 46 HOLES TO 48 HOLES																		
2	89-12-06	REVISED 3/16" Ø HOLES FROM 2" TO 2 1/2" OFFSET.																		
1	89-6-26	REVISED 3/8" N.C. BOLT FROM 3/4" LG. TO 1" LONG.																		