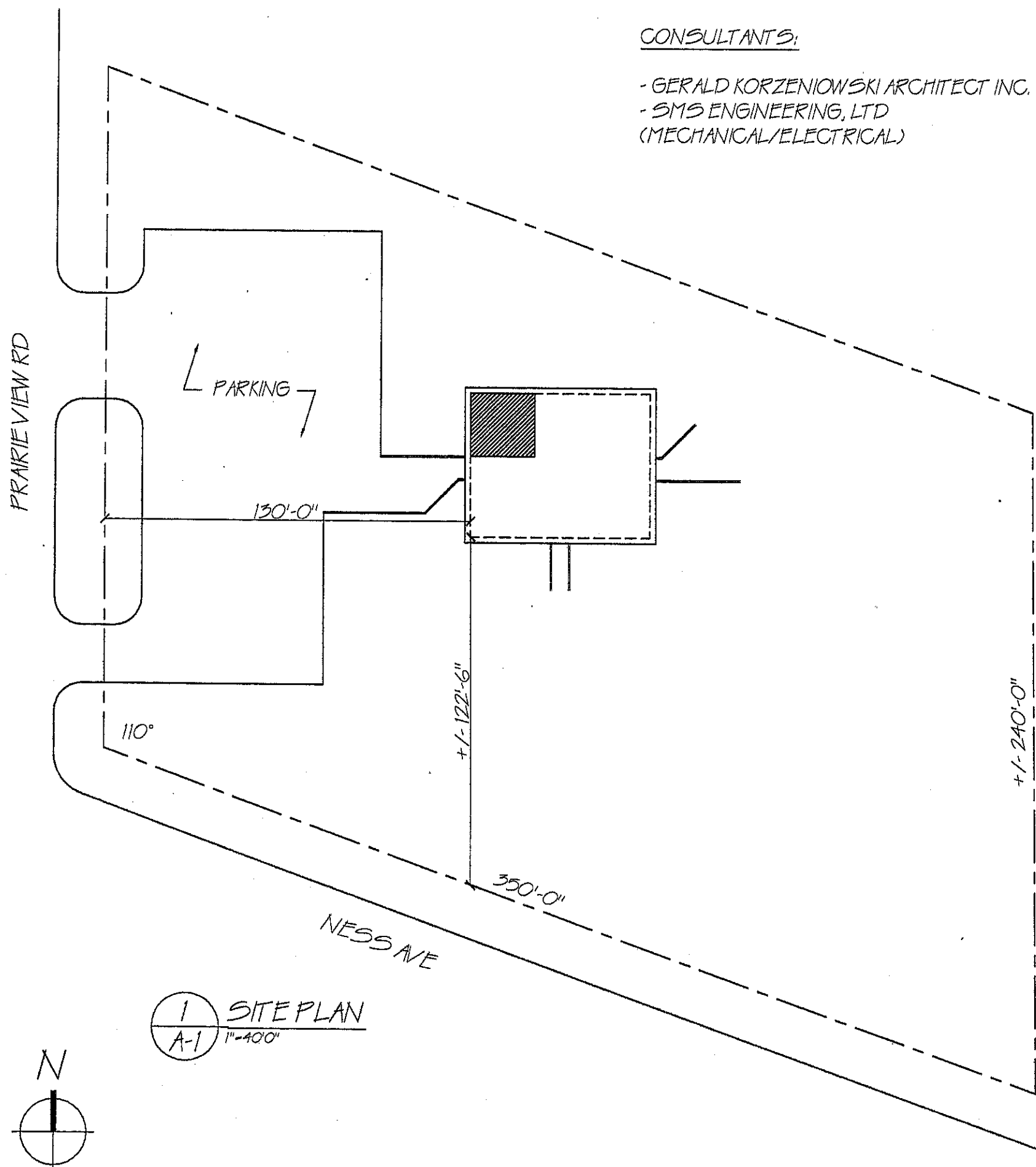
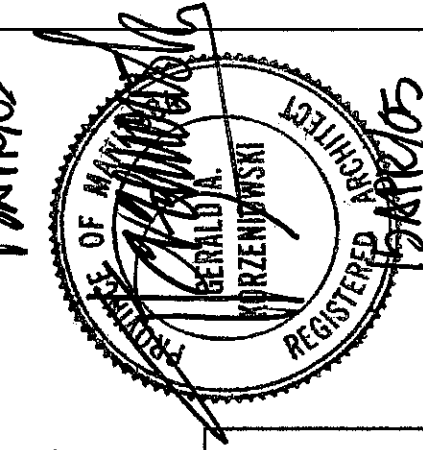
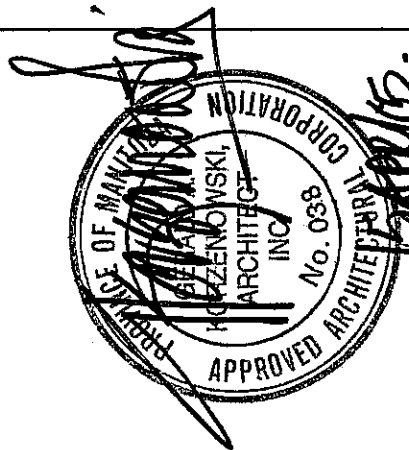


CONSULTANTS:

- GERALD KORZENIOWSKI ARCHITECT INC.
- SMS ENGINEERING, LTD
(MECHANICAL/ELECTRICAL)



DRAWING
NUMBER

DRAWING
TITLE

- A-1 TITLE SHEET & SITE PLAN
- A-2 DEMOLITION PLAN
- A-3 FLOOR PLAN
- A-4 EXTERIOR ELEVATIONS
- A-5 CLASSROOM PLAN
- A-6 CLASSROOM SECTIONS & DETAILS
- A-7 CLASSROOM DETAILS
- A-8 CLASSROOM DETAILS
- A-9 CLASSROOM INTERIOR ELEVATIONS
- A-10 FOYER PLAN
- A-11 FOYER SECTIONS & DETAILS
- A-12 FOYER INTERIOR ELEVATIONS
- A-13 STORE PLAN
- A-14 STORE ELEVATIONS
- A-15 REFLECTED CEILING PLAN
- A-16 BUILDING CODE

1 SITE PLAN
A-1 1"=40'0"

APPROVAL FOR CONSTRUCTION
CITY OF WINNIPEG

[Signature]
Manager of Building Services

April 25/05
Date

[Signature]
Manager of Parks and Open Spaces

April 22, 2005
Date

SHEET TITLE
TITLE SHEET &
SITE PLAN

SCALE AS NOTED
DATE APR 19/05
DRAWN KLM

FILE NO. 2417
SHEET NO. A-1

PROJECT TITLE
LIVING PRAIRIE MUSEUM
2795 NESS AVE

218 OVERDALE STREET
WINNIPEG, MB. R3J 2G3
PHONE: (204)832-8666
FAX: (204)889-1030

GERALD A. KORZENIOWSKI
ARCHITECT INC.

