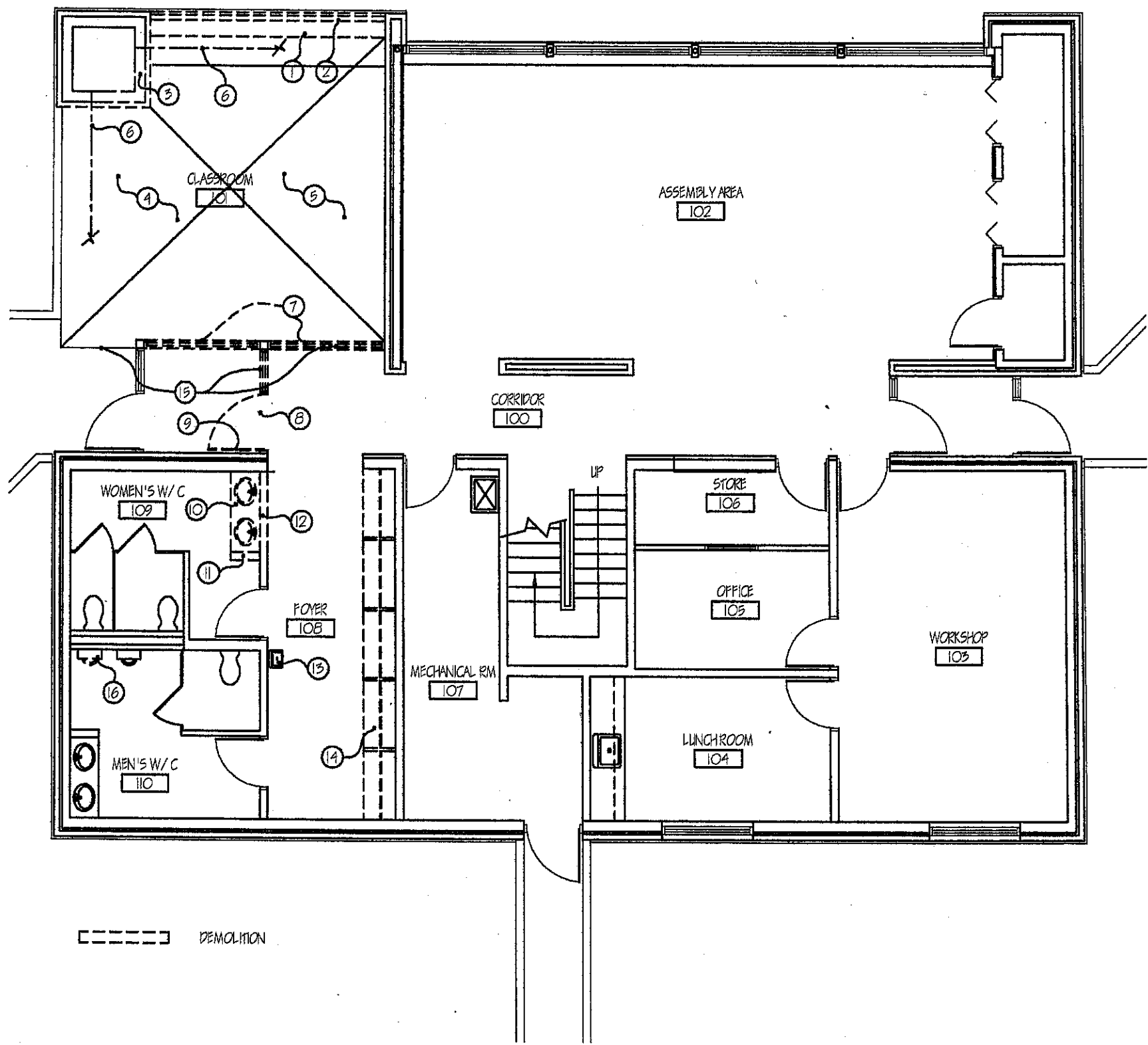
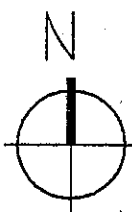


SHEET NO. A-2  
FILE NO. 2417



--- DEMOLITION



DEMOLITION NOTES

- ① REMOVE EXISTING WOOD BENCH & STEEL BRACKETS, ANCHORS ETC.
- ② REMOVE EXISTING WOOD TRELLIS IN ITS ENTIRETY.
- ③ REMOVE EXISTING BRICK VENEER ON TWO SIDES & CONCRETE BLOCK WALLS TO WITHIN 8" OF BEAM ABOVE. NOTE THAT THE BLOCK HAS CONCRETE FILLED FLUTES & IS USED AS STRUCTURE FOR TWO EXISTING ROOF BEAMS.
- ④ REMOVE EXISTING BRICK MASONRY FLOORING. ENSURE RECESSED CONCRETE FLOORING EXTENDS INSIDE EXISTING COLUMN BEING REMOVED.
- ⑤ REMOVE EXISTING WOOD CEILING ONLY TO THE EXTENT BEING ENCLOSED. (I.E. EXISTING EXTERIOR WOOD AT SOFFITS TO REMAIN.) PROTECT ANY EXISTING INSULATION, VAPOUR BARRIER, FRAMING AS MAY (OR MAY NOT) EXIST.
- ⑥ MAINTAIN 8" OF EXISTING CONCRETE BLOCK ON BOTH SIDES OF EXSTING BEAMS. (TYP BOTH BEAMS)
- ⑦ REMOVE EXISTING LEXAN & GLAZING, SELECTIVELY DEMOLISH FRAMES FOR RELOCATED DOOR ASSEMBLY.
- ⑧ REMOVE EXISTING DOOR, FRAMING & SIDELIGHT FOR RELOCATION TO RM 101. SEE NOTE 7.
- ⑨ MODIFY EXISTING DOOR FOR NEW CEILING HEIGHT AND HINGE MOUNTING.
- ⑩ REMOVE EXISTING VANITY, SINKS, BRASS & ACCESSORIES.
- ⑪ REMOVE CONCRETE BLOCK WALL.
- ⑫ CUT NEW OPENING IN CONCRETE BLOCK FOR MILLWORK. SEE 1/A-11 FOR NEW STEEL LINTEL. MODIFY PLUMBING FOR NEW DESIGN.
- ⑬ REMOVE EXISTING DRINKING FOUNTAIN, MODIFY PLUMBING FOR NEW DESIGN.
- ⑭ REMOVE EXISTING MILLWORK STORAGE, LIGHTING, ETC IN ITS ENTIRETY.
- ⑮ PATCH MASONRY FLOOR WITH EXISTING MATERIAL REMOVED FROM CLASSROOM.
- ⑯ REMOVE EXISTING URINAL, PATCH/ REPAIR WALL. (SEPARATE PRICE ITEM)

SHEET TITLE  
**DEMOLITION PLAN**

PROJECT TITLE  
**LIVING PRAIRIE MUSEUM**  
**2795 NESS AVE**

**GERALD A. KORZENIOWSKI**  
**ARCHITECT INC.**  
218 OVERDALE STREET  
WINNIPEG, MB. R3J 2G3  
PHONE: (204)832-8666  
FAX: (204)889-1030

DATE APR 19/05  
DRAWN KLM  
SCALE 1/8" = 1'0"