

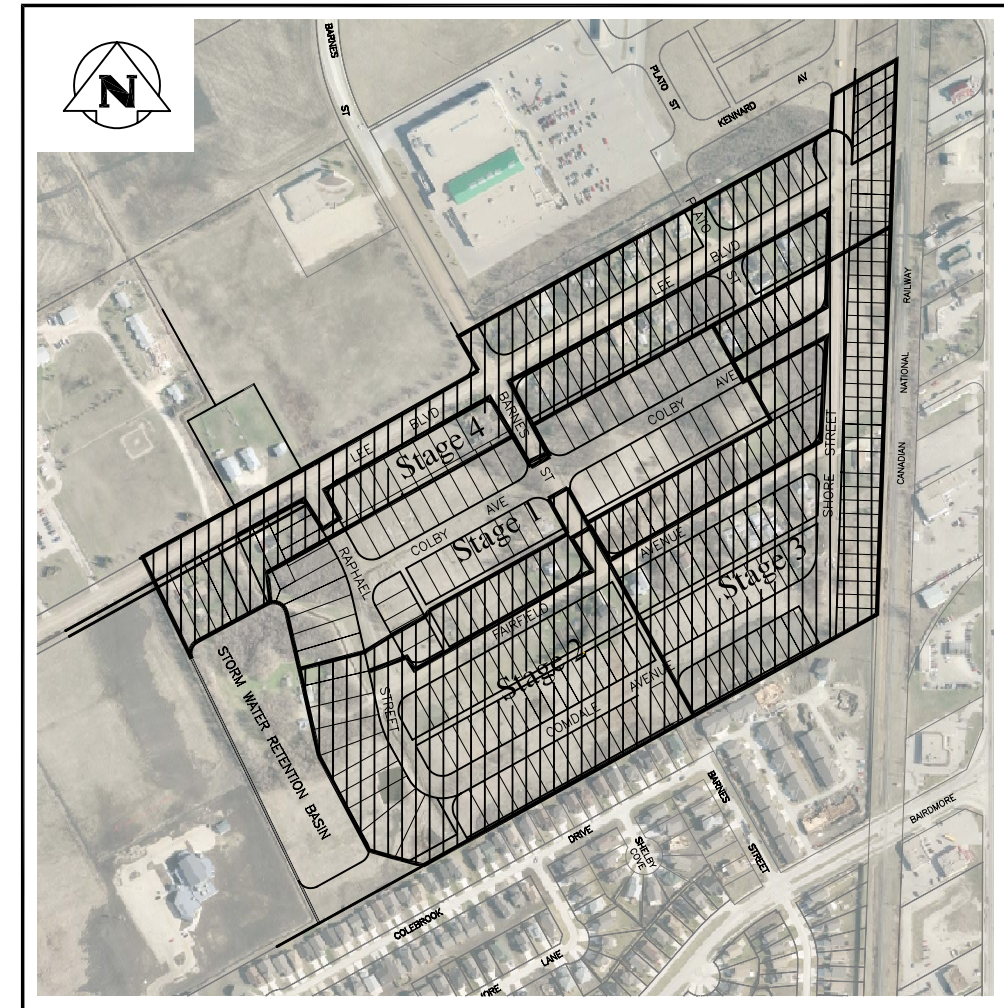


THE CITY OF WINNIPEG

FAIRFIELD PARK LOCAL IMPROVEMENT DISTRICT STAGES II, III & IV

195 - 2005

2005 SEWER, WATER, AND ROAD CONSTRUCTION, AND ASSOCIATED WORKS



- D-8699 GENERAL PLAN
- LD-3136 LOT GRADING PLAN
- D-8700 LEE BOULEVARD
170m WEST OF RAPHAEL STREET
TO 100m WEST OF BARNES STREET
- D-8701 LEE BOULEVARD
100m WEST OF BARNES STREET
TO 130m EAST OF BARNES STREET
- D-8702 LEE BOULEVARD
130m EAST OF BARNES STREET
TO SHORE STREET
- D-8703 RAPHAEL STREET
40m SOUTH OF FAIRFIELD AVENUE
TO COMDALE AVENUE
- D-8704 COLBY AVENUE
80m WEST OF SHORE STREET
TO SHORE STREET
- D-8705 BARNES STREET
COLEBROOK AVENUE TO
30m NORTH OF FAIRFIELD AVENUE
- D-8706 BARNES STREET
30m NORTH OF FAIRFIELD AVENUE
TO LEE BOULEVARD
- D-8707 FAIRFIELD AVENUE
RAPHAEL STREET TO 30m EAST OF BARNES STREET
- D-8708 FAIRFIELD AVENUE
30m EAST OF BARNES STREET
TO SHORE STREET
- D-8709 COMDALE AVENUE
RAPHAEL STREET TO
180m EAST OF RAPHAEL STREET
- D-8710 COMDALE AVENUE
180m EAST OF RAPHAEL STREET
TO SHORE STREET
- D-8711 SHORE STREET
COMDALE AVENUE TO 82m NORTH OF FAIRFIELD AVENUE
- D-8712 SHORE STREET
82m NORTH OF FAIRFIELD AVENUE TO 55m NORTH OF LEE BOULEVARD
- LD-3137 TYPICAL CROSS SECTIONS AND DETAILS