

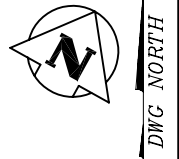
**LEE BLVD - EAST OF BARNES RIGHT OF WAY CROSS SECTION**  
 HOR. 1 : 200, VER. 1 : 100

CIRCULAR CURVE DATA				
CURVE NO.	C1	C2	C3	C4
RADIUS	53.75	7.50	46.25	7.50
DELTA	23°57'00"	82°57'59"	19°36'10"	101°09'36"
TANGENT	11.40	6.632	7.990	9.124
LENGTH	22.468	10.860	15.824	13.242

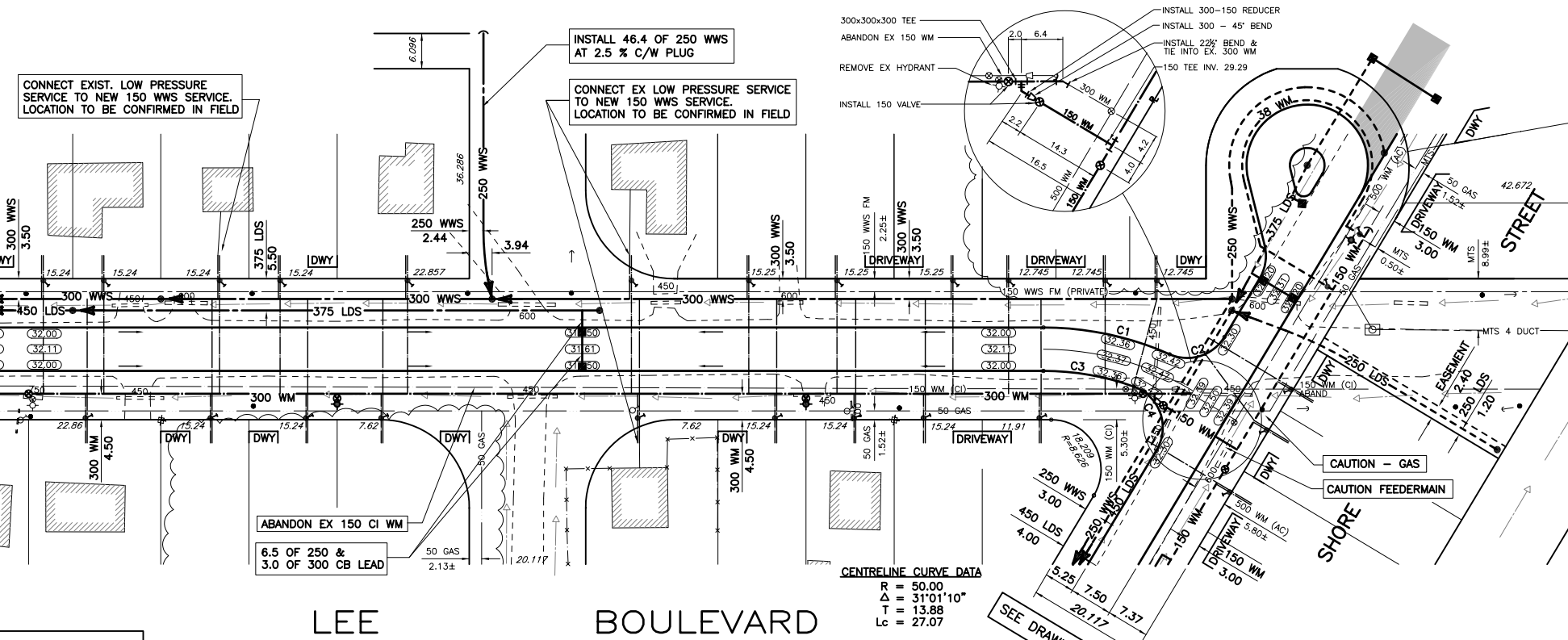
NOTE: CONTRACTOR TO PROVIDE 48 HOURS NOTICE PRIOR TO CROSSING OR WORKING IN VICINITY OF 500 FEEDERMAN

NOTE: SEWER SERVICES ON SOUTH SIDE LEE BOULEVARD TO BE INSTALLED ABOVE 300 WM

- CONSTRUCTION NOTES:**
- SEE DETAIL SHEET FOR CURB TYPE AND LOCATION.
  - ALL CATCHBASINS TO BE AS PER SD-024 UNLESS OTHERWISE NOTED.
  - ALL HYDRANTS TO BE AS PER SD-006/SD-007 AND 2.8m FROM PROPERTY LINE. UNLESS OTHERWISE NOTED.
  - ALL CATCHBASIN LEADS TO BE 250mm AT A MINIMUM 1.5% UNLESS OTHERWISE NOTED.
  - MODIFIED BARRIER CURB AT ALL INTERSECTION RADII. 3.0m TRANSITION.
  - ALL EXISTING UTILITIES USED FOR CONNECTIONS TO HAVE INVERTS VERIFIED PRIOR TO CONSTRUCTION.
  - ALL RADII AT INTERSECTIONS 7.5m UNLESS OTHERWISE NOTED.
  - ALL PIPE BACKFILL UNDER BOULEVARD TO BE CLASS 4 UNLESS OTHERWISE NOTED.
  - ALL PIPE UNDER EXISTING OR FUTURE PAVEMENT TO BE CORED OR HAVE CLASS 2 BACKFILL.
  - ALL WATER SERVICE CONNECTIONS TO BE 20mm DIA. AND ALL SEWER TO BE 150mm DIA. UNLESS OTHERWISE NOTED.
  - ALL EXISTING CULVERTS ARE TO BE REMOVED AND DISPOSED OF.



SEE DRAWING D-8701

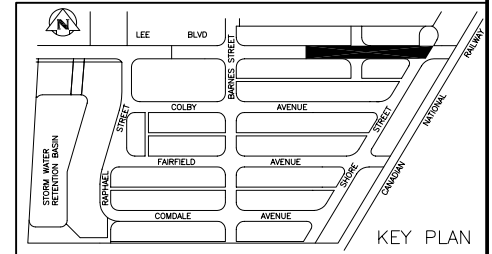


NOTE: CHAINAGE IS ALONG CENTRELINE OF PAVEMENT.

**CENTRELINE CURVE DATA**

R	= 50.00
Δ	= 31°01'10"
T	= 13.88
Lc	= 27.07

**APEGM**  
 Certificate of Authorization  
 Wardrop Engineering Inc.  
 No. 195 Expiry: April 30, 2006



LEGEND-PLAN	PROPOSED	EXISTING	LEGEND-PLAN	PROPOSED	EXISTING	LEGEND-PLAN	PROPOSED	EXISTING									
WATERMAIN	HYDRANT	VALVE	300 LDS	LAND DRAINAGE SEWER	250 WWS	MANHOLE	CATCHBASIN	CURB INLET	JUNCTIONS	CULVERT	EXISTING	LEGEND-PLAN	PROPOSED	EXISTING	LEGEND-PLAN	PROPOSED	EXISTING
---	+	+	---	---	---	○	□	▽	+	---	---	---	---	---	---	---	---
---	---	---	---	---	---	---	---	---	---	---	---	---	---	---	---	---	---
---	---	---	---	---	---	---	---	---	---	---	---	---	---	---	---	---	---
---	---	---	---	---	---	---	---	---	---	---	---	---	---	---	---	---	---
---	---	---	---	---	---	---	---	---	---	---	---	---	---	---	---	---	---
---	---	---	---	---	---	---	---	---	---	---	---	---	---	---	---	---	---
---	---	---	---	---	---	---	---	---	---	---	---	---	---	---	---	---	---
---	---	---	---	---	---	---	---	---	---	---	---	---	---	---	---	---	---

**LOCATION APPROVED UNDERGROUND STRUCTURES**

B.M. CITY OF WINNIPEG No. 82-020  
 ELEV. 32.892m F.B. No. 2078

DESIGNED BY: GL/LL  
 CHECKED BY: G.S.  
 DRAWN BY: NL  
 APPROVED BY:  
 HOR. SCALE: 1:500  
 VERTICAL: 1:50

ISSUED FOR TENDER: 05.04.11 GS  
 ISSUED FOR APPROVAL: 05.04.08 GS

NO. REVISIONS

**WARDROP** Engineering Inc.

DESIGNED BY: GL/LL  
 CHECKED BY: G.S.  
 DRAWN BY: NL  
 APPROVED BY:  
 HOR. SCALE: 1:500  
 VERTICAL: 1:50

ISSUED FOR TENDER: 05.04.11 GS  
 ISSUED FOR APPROVAL: 05.04.08 GS

NO. REVISIONS

**PROVINCE OF MANITOBA REGISTERED PROFESSIONAL ENGINEER**

L.G.P. CHAMBERS

CONSULTANT DRAWING NO. 05129401-DWG-C1005

**THE CITY OF WINNIPEG**  
 PLANNING, PROPERTY AND DEVELOPMENT

FAIRFIELD PARK LOCAL IMPROVEMENT DISTRICT  
 STAGES II, III & IV

LEE BOULEVARD  
 130m EAST OF BARNES STREET  
 TO SHORE STREET

CITY DRAWING NUMBER: D-8702  
 SHEET: 5 OF 16  
 C1005