

COLBY AVENUE
RIGHT OF WAY CROSS SECTION
HOR. 1 : 200, VER. 1 : 100

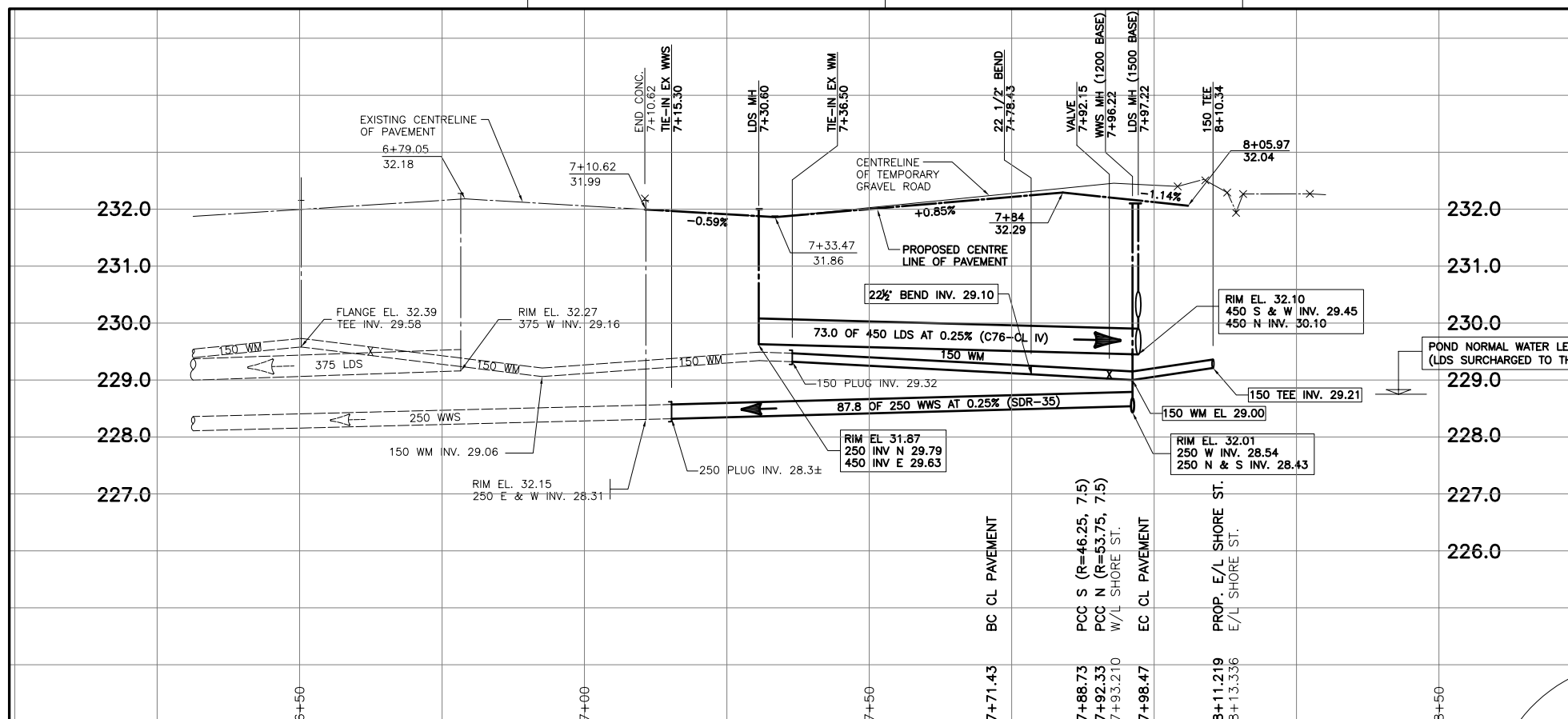
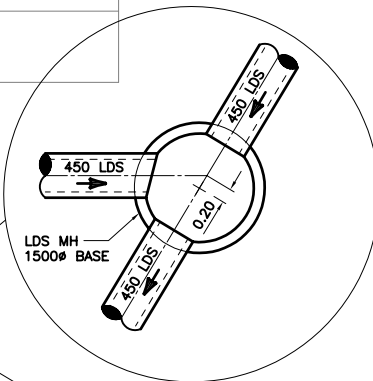


CIRCULAR CURVE DATA				
CURVE NO.	C1	C2	C3	C4
RADIUS	53.75	7.50	46.25	7.50
DELTA	23°57'00"	82°57'59"	19°49'25"	101°09'36"
TANGENT	11.40	6.632	8.082	9.124
LENGTH	22.468	10.860	16.002	13.242

CONSTRUCTION NOTES:

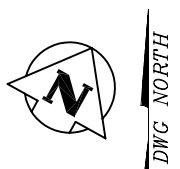
- SEE DETAIL SHEET FOR CURB TYPE AND LOCATION.
- ALL CATCHBASIN'S TO BE AS PER SD-024 UNLESS OTHERWISE NOTED.
- ALL HYDRANTS TO BE AS PER SD-006/SD-007 AND 2.8m FROM PROPERTY LINE. UNLESS OTHERWISE NOTED.
- ALL CATCHBASIN LEADS TO BE 250mm AT A MINIMUM 1.5% UNLESS OTHERWISE NOTED.
- MODIFIED BARRIER CURB AT ALL INTERSECTION RADII. 3.0m TRANSITION.
- ALL EXISTING UTILITIES USED FOR CONNECTIONS TO HAVE INVERTS VERIFIED PRIOR TO CONSTRUCTION.
- ALL RADII AT INTERSECTIONS 7.5m UNLESS OTHERWISE NOTED.
- ALL PIPE BACKFILL UNDER BOULEVARD TO BE CLASS 4 UNLESS OTHERWISE NOTED.
- ALL PIPE UNDER EXISTING OR FUTURE PAVEMENT TO BE CORED OR HAVE CLASS 2 BACKFILL.
- ALL WATER SERVICE CONNECTIONS TO BE 20mm DIA. AND ALL SEWER TO BE 150mm DIA. UNLESS OTHERWISE NOTED.
- ALL EXISTING CULVERTS ARE TO BE REMOVED AND DISPOSED OF.

NOTE:
CONTRACTOR TO PROVIDE 48 HOURS NOTICE PRIOR TO CROSSING OR WORKING IN VICINITY OF 500 FEEDERMAIN



CENTRELINE PAVEMENT CURVE DATA

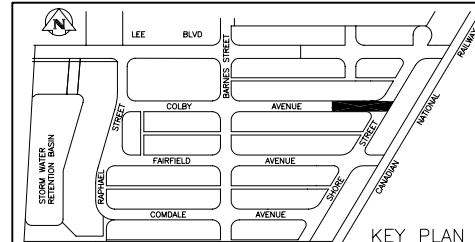
R	=	50.00
Δ	=	30°59'00"
T	=	13.86
Lc	=	27.04



SEE DRAWING D-8486

SEE DRAWING D-8711

NOTE:
CHAINAGE IS ALONG CENTRELINE OF PAVEMENT



EXISTING	LEGEND-PLAN	PROPOSED	EXISTING	LEGEND-PLAN	PROPOSED	EXISTING	LEGEND-PLAN	PROPOSED
—	WATERMAIN	—	—	GAS	—	—	DITCH/SWALE	—
—	HYDRANT	—	—	M.T.S.	—	—	HYDRO POLE	—
—	VALVE	—	—	CONCRETE	—	—	LIGHT STANDARD	—
—	LAND DRAINAGE SEWER	—	—	SIDEWALK	—	—	ANCHOR	—
—	WASTEWATER SEWER	—	—	ASPHALT	—	—	TREE	—
—	MANHOLE	—	—	CONCRETE CURB	—	—	BUSHLINE	—
—	CATCHBASIN	—	—	SIDEWALK RAMP	—	—	SURVEY BAR	—
—	CURB INLET	—	—	GRAVEL	—	—	LEGAL UNIT	—
—	JUNCTIONS	—	—	PROPERTY LINE	—	—	BUILDING	—
—	CULVERT	—	—	LOT LINE	—	—	TEST HOLE	—

LOCATION APPROVED UNDERGROUND STRUCTURES

SUPV. U/G STRUCTURES DATE COMMITTEE

NOTE:
LOCATION OF UNDERGROUND STRUCTURES AS SHOWN ARE BASED ON THE BEST INFORMATION AVAILABLE. BUT NO GUARANTEE IS GIVEN THAT ALL EXISTING UTILITIES ARE SHOWN OR THAT THE GIVEN LOCATIONS ARE EXACT. CONFIRMATION OF EXISTENCE AND EXACT LOCATION OF ALL SERVICES MUST BE OBTAINED FROM THE INDIVIDUAL UTILITIES BEFORE PROCEEDING WITH CONSTRUCTION.

B.M. CITY OF WINNIPEG No. 82-020 ELEV. 32.892m	F.B. No. 2078
DESIGNED BY GS/GL	CHECKED BY G.S.
DRAWN BY NL	APPROVED BY
HOR. SCALE: 1:500	RELEASED FOR CONSTRUCTION
VERTICAL: 1:50	
ISSUED FOR TENDER 05.04.11 GS	
ISSUED FOR APPROVAL 05.04.08 GS	
NO. REVISIONS	DATE BY

WARDROP Engineering Inc.

DESIGNED BY GS/GL
DRAWN BY NL
HOR. SCALE: 1:500
VERTICAL: 1:50
DATE 05.03.29

CHECKED BY G.S.
APPROVED BY
RELEASED FOR CONSTRUCTION
DATE

APEGM
Certificate of Authorization
Wardrop Engineering Inc.
No. 195 Expiry: April 30, 2006

PROVINCE OF MANITOBA
L.G.P. CHAMBERS
REGISTERED PROFESSIONAL ENGINEER

THE CITY OF WINNIPEG
PLANNING, PROPERTY AND DEVELOPMENT

FAIRFIELD PARK LOCAL IMPROVEMENT DISTRICT
STAGES II, III & IV

COLBY AVENUE
80m WEST OF SHORE STREET
TO SHORE STREET

CITY DRAWING NUMBER
D-8704
SHEET 7 OF 16
C1007