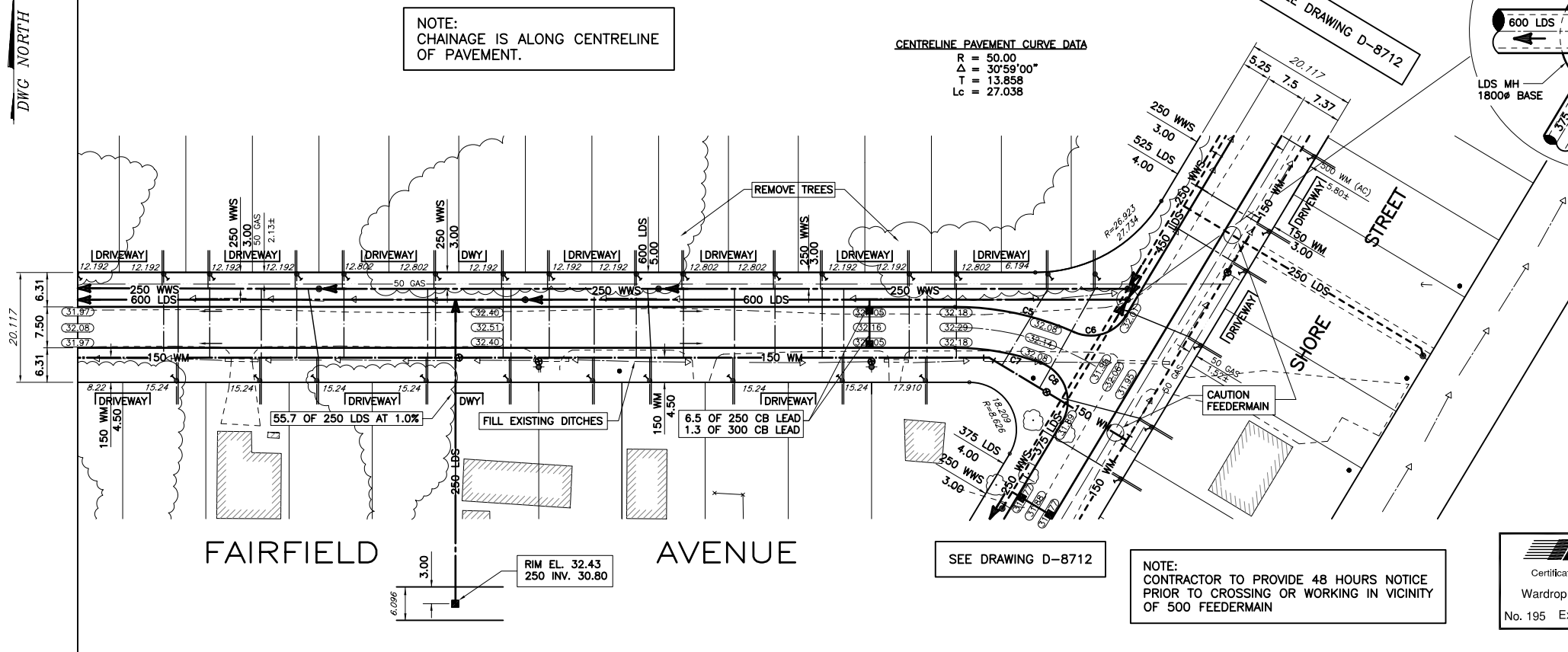


**FAIRFIELD AVENUE
RIGHT OF WAY CROSS SECTION**
HOR. 1 : 200, VER. 1 : 100

CIRCULAR CURVE DATA

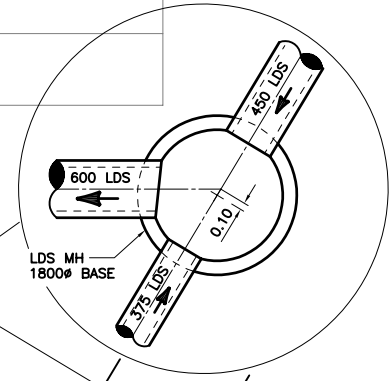
CURVE NO.	C5	C6	C7	C8
RADIUS	53.75	7.50	46.25	7.50
DELTA	23°57'00"	82°57'59"	19°49'25"	101°09'36"
TANGENT	11.40	6.632	8.082	9.124
LENGTH	22.468	10.860	16.002	13.242

- CONSTRUCTION NOTES:**
- SEE DETAIL SHEET FOR CURB TYPE AND LOCATION.
 - ALL CATCHBASIN'S TO BE AS PER SD-024 UNLESS OTHERWISE NOTED.
 - ALL HYDRANTS TO BE AS PER SD-006/SD-007 AND 2.8m FROM PROPERTY LINE. UNLESS OTHERWISE NOTED.
 - ALL CATCHBASIN LEADS TO BE 250mm AT A MINIMUM 1.5% UNLESS OTHERWISE NOTED.
 - MODIFIED BARRIER CURB AT ALL INTERSECTION RADII. 3.0m TRANSITION.
 - ALL EXISTING UTILITIES USED FOR CONNECTIONS TO HAVE INVERTS VERIFIED PRIOR TO CONSTRUCTION.
 - ALL RADII AT INTERSECTIONS 7.5m UNLESS OTHERWISE NOTED.
 - ALL PIPE BACKFILL UNDER BOULEVARD TO BE CLASS 4 UNLESS OTHERWISE NOTED.
 - ALL PIPE UNDER EXISTING OR FUTURE PAVEMENT TO BE CORED OR HAVE CLASS 2 BACKFILL.
 - ALL WATER SERVICE CONNECTIONS TO BE 20mm DIA. AND ALL SEWER TO BE 150mm DIA. UNLESS OTHERWISE NOTED.
 - ALL EXISTING CULVERTS ARE TO BE REMOVED AND DISPOSED OF.



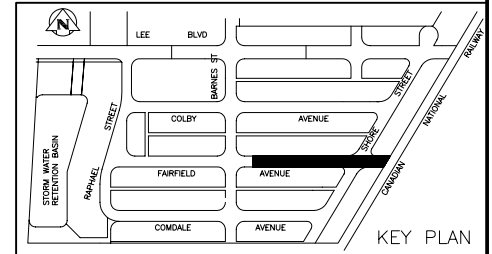
CENTRELINE PAVEMENT CURVE DATA

R	= 50.00
Δ	= 30°59'00"
T	= 13.858
L _G	= 27.038



NOTE:
CONTRACTOR TO PROVIDE 48 HOURS NOTICE PRIOR TO CROSSING OR WORKING IN VICINITY OF 500 FEEDERMAIN

APEGM
Certificate of Authorization
Wardrop Engineering Inc.
No. 195 Expiry: April 30, 2006



EXISTING	LEGEND-PLAN	PROPOSED	EXISTING	LEGEND-PLAN	PROPOSED	EXISTING	LEGEND-PLAN	PROPOSED
—	WATERMAIN	—	—	GAS	—	—	DITCH/SWALE	—
—	HYDRANT	—	—	M.T.S.	—	—	HYDRO POLE	—
—	VALVE	—	—	CONCRETE	—	—	LIGHT STANDARD	—
—	300 LDS	—	—	SIDEWALK	—	—	ANCHOR	—
—	LAND DRAINAGE SEWER	—	—	ASPHALT	—	—	TREE	—
—	250 WWS	—	—	CONCRETE CURB	—	—	BUSHLINE	—
—	WASTEWATER SEWER	—	—	SIDEWALK RAMP	—	—	SURVEY BAR	—
—	MANHOLE	—	—	GRAVEL	—	—	LEGAL UNIT	—
—	CATCHBASIN	—	—	PROPERTY LINE	—	—	BUILDING	—
—	CURB INLET	—	—	LOT LINE	—	—	TEST HOLE	—
—	JUNCTIONS	—	—	LEGEND-PLAN	—	—	LEGEND-PLAN	—
—	CULVERT	—	—	PROPOSED	—	—	PROPOSED	—

LOCATION APPROVED UNDERGROUND STRUCTURES

B.M. CITY OF WINNIPEG No. 82-020
ELEV. 32.892m F.B. No. 2078

DESIGNED BY G.L./L.L. CHECKED BY G.S.
DRAWN BY NL APPROVED BY
HOR. SCALE: 1:500
VERTICAL: 1:50
ISSUED FOR TENDER 05.04.11 GS
ISSUED FOR APPROVAL 05.04.08 GS

NOTE:
LOCATION OF UNDERGROUND STRUCTURES AS SHOWN ARE BASED ON THE BEST INFORMATION AVAILABLE. BUT NO GUARANTEE IS GIVEN THAT ALL EXISTING UTILITIES ARE SHOWN OR THAT THE GIVEN LOCATIONS ARE EXACT. CONFIRMATION OF EXISTENCE AND EXACT LOCATION OF ALL SERVICES MUST BE OBTAINED FROM THE INDIVIDUAL UTILITIES BEFORE PROCEEDING WITH CONSTRUCTION.

WARDROP Engineering Inc.

DESIGNED BY G.L./L.L. CHECKED BY G.S.
DRAWN BY NL APPROVED BY
HOR. SCALE: 1:500
VERTICAL: 1:50
ISSUED FOR TENDER 05.04.11 GS
ISSUED FOR APPROVAL 05.04.08 GS

L.G.P. CHAMBERS
REGISTERED PROFESSIONAL ENGINEER

CONSULTANT DRAWING NO.
05129401-DWG-C1011

THE CITY OF WINNIPEG
PLANNING, PROPERTY AND DEVELOPMENT

FAIRFIELD PARK LOCAL IMPROVEMENT DISTRICT
STAGES II, III & IV

FAIRFIELD AVENUE
30m EAST OF BARNES STREET
TO SHORE STREET

CITY DRAWING NUMBER
D-8708
SHEET 11 OF 16
C1011