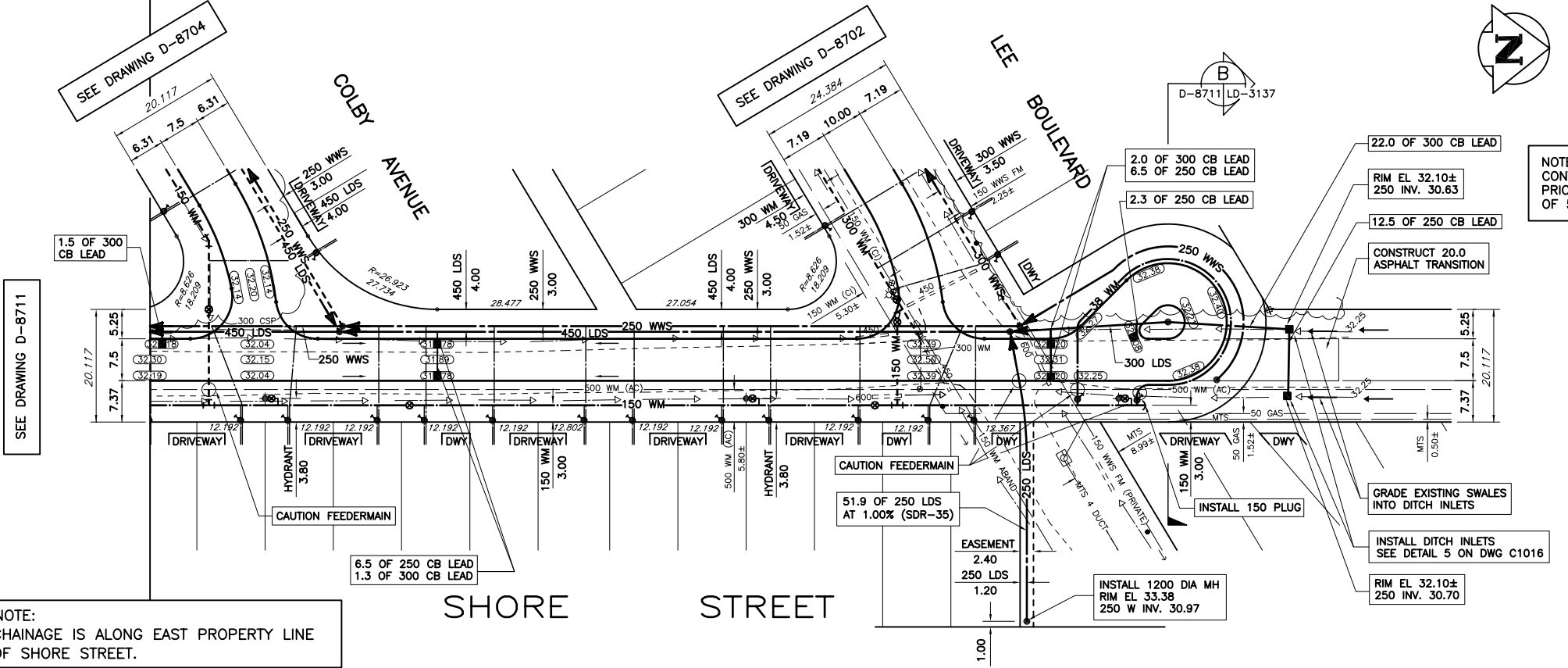


**SHORE STREET  
RIGHT OF WAY CROSS SECTION**  
HOR. 1 : 200, VER. 1 : 100

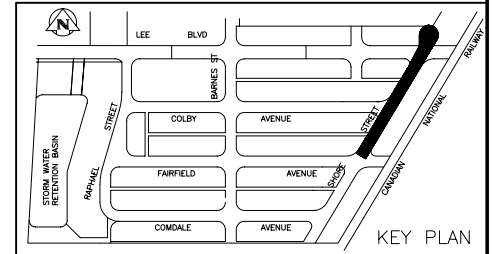
- CONSTRUCTION NOTES:**
- SEE DETAIL SHEET FOR CURB TYPE AND LOCATION.
  - ALL CATCHBASIN'S TO BE AS PER SD-024 UNLESS OTHERWISE NOTED.
  - ALL HYDRANTS TO BE AS PER SD-006/SD-007 AND 2.8m FROM PROPERTY LINE. UNLESS OTHERWISE NOTED.
  - ALL CATCHBASIN LEADS TO BE 250mm AT A MINIMUM 1.5% UNLESS OTHERWISE NOTED.
  - MODIFIED BARRIER CURB AT ALL INTERSECTION RADII. 3.0m TRANSITION.
  - ALL EXISTING UTILITIES USED FOR CONNECTIONS TO HAVE INVERTS VERIFIED PRIOR TO CONSTRUCTION.
  - ALL RADII AT INTERSECTIONS 7.5m UNLESS OTHERWISE NOTED.
  - ALL PIPE BACKFILL UNDER BOULEVARD TO BE CLASS 4 UNLESS OTHERWISE NOTED.
  - ALL PIPE UNDER EXISTING OR FUTURE PAVEMENT TO BE CORED OR HAVE CLASS 2 BACKFILL.
  - ALL WATER SERVICE CONNECTIONS TO BE 20mm DIA. AND ALL SEWER TO BE 150mm DIA. UNLESS OTHERWISE NOTED.
  - ALL EXISTING CULVERTS ARE TO BE REMOVED AND DISPOSED OF.

**NOTE:**  
CONTRACTOR TO PROVIDE 48 HOURS NOTICE PRIOR TO CROSSING OR WORKING IN VICINITY OF 500 FEEDERMAIN



**NOTE:**  
CHAINAGE IS ALONG EAST PROPERTY LINE OF SHORE STREET.

**APEGM**  
Certificate of Authorization  
Wardrop Engineering Inc.  
No. 195 Expiry: April 30, 2006



EXISTING	LEGEND-PLAN	PROPOSED	EXISTING	LEGEND-PLAN	PROPOSED	EXISTING	LEGEND-PLAN	PROPOSED
—	WATERMAIN	—	—	—	—	—	GAS	—
—	HYDRANT	—	—	—	—	—	M.T.S.	—
—	VALVE	—	—	—	—	—	CONCRETE	—
—	300 LDS	—	—	—	—	—	SIDEWALK	—
—	250 WWS	—	—	—	—	—	ASPHALT	—
—	WASTEWATER SEWER	—	—	—	—	—	CONCRETE CURB	—
—	MANHOLE	—	—	—	—	—	SIDEWALK RAMP	—
—	CATCHBASIN	—	—	—	—	—	GRAVEL	—
—	CURB INLET	—	—	—	—	—	PROPERTY LINE	—
—	JUNCTIONS	—	—	—	—	—	LOT LINE	—
—	CULVERT	—	—	—	—	—	LEGEND-PLAN	PROPOSED
—	EXISTING	—	—	—	—	—	PROPOSED	—
—	LEGEND-PLAN	PROPOSED	EXISTING	LEGEND-PLAN	PROPOSED	EXISTING	LEGEND-PLAN	PROPOSED

LOCATION APPROVED UNDERGROUND STRUCTURES	B.M. CITY OF WINNIPEG No. 82-020 ELEV. 32.892m	F.B. No. 2078
SUPV. U/G STRUCTURES	DATE	COMMITTEE
NOTE: LOCATION OF UNDERGROUND STRUCTURES AS SHOWN ARE BASED ON THE BEST INFORMATION AVAILABLE. BUT NO GUARANTEE IS GIVEN THAT ALL EXISTING UTILITIES ARE SHOWN OR THAT THE GIVEN LOCATIONS ARE EXACT. CONFIRMATION OF EXISTENCE AND EXACT LOCATION OF ALL SERVICES MUST BE OBTAINED FROM THE INDIVIDUAL UTILITIES BEFORE PROCEEDING WITH CONSTRUCTION.	DATE	BY
ISSUED FOR TENDER	05.04.11	GS
ISSUED FOR APPROVAL	05.04.08	GS
NO. REVISIONS	DATE	BY

**WARDROP** Engineering Inc.

DESIGNED BY: GL/LL  
CHECKED BY: G.S.  
DRAWN BY: NL  
APPROVED BY:  
HOR. SCALE: 1:500  
VERTICAL: 1:50  
RELEASED FOR CONSTRUCTION  
DATE: 05.02.11

**PROVINCE OF MANITOBA**  
REGISTERED PROFESSIONAL ENGINEER  
**L.G.P. CHAMBERS**  
CONSULTANT DRAWING NO. 05129401-00-C1015

**THE CITY OF WINNIPEG**  
PLANNING, PROPERTY AND DEVELOPMENT

FAIRFIELD PARK LOCAL IMPROVEMENT DISTRICT  
STAGES II, III & IV

SHORE STREET  
82m NORTH OF FAIRFIELD AVENUE  
TO 55m NORTH OF LEE BOULEVARD

CITY DRAWING NUMBER: D-8712  
SHEET: 15 OF 16  
C1015