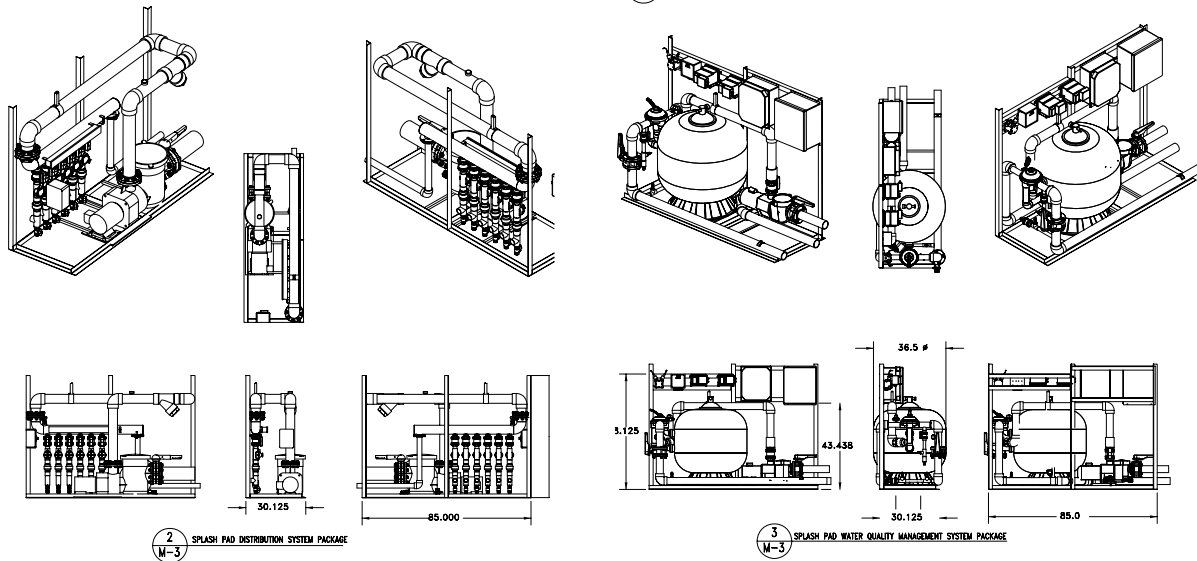
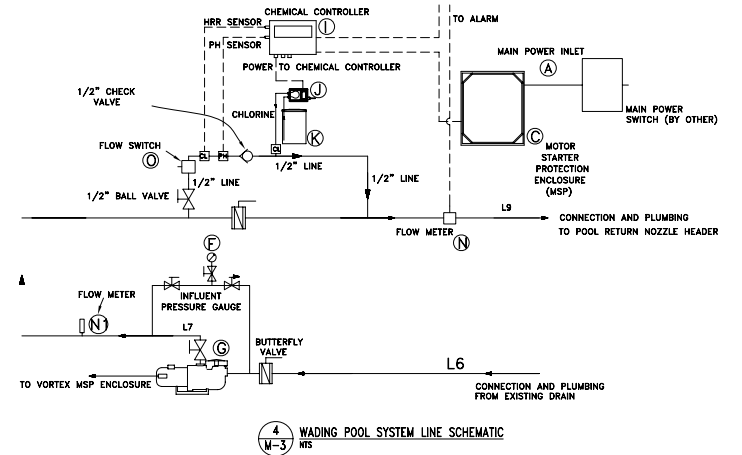


SPLASH PAD WATER QUALITY MANAGEMENT AND DISTRIBUTION SYSTEM SPECIFICATIONS (WADING POOL SYSTEM IS THE SAME BUT WITHOUT THE FILTER AND MANIFOLD)			
Item	Provided by	GENERAL Description	QTY.
MAIN ELECTRICAL POWER	CONTRACTOR	240 V AC, 60 AMPS, SINGLE PHASE	1
SPLASHPAD SYSTEM CONTROL	VORTEX	TOUCH SCREEN INTERFACE 10 OUTPUT CONTROLLER, FIRMWARE TO ALL SMD MOUNTED COMPONENTS. USER PROGRAMMABLE OPERATIONAL HOUR TIME CLOCK AND SPLASHPAD SPRAY SEQUENCES. INCLUDES FACTORY PRESET SPRAY SEQUENCE EQUIPMENT AND ALARM FAILSAFES	1
MOTOR STARTER PROTECTION ENCLOSURE	VORTEX	MOTOR STARTERS AND OVERLOAD RELAYS. INDIVIDUAL CONTROL FOR EACH PUMP.	1
SKID FRAME	VORTEX	STAINLESS STEEL CONSTRUCTION. PLAY PRODUCT - 30" W X 61" H X 85" L. FILTRATION - 38.5" W X 80" H X 85" L.	1
WATER DISTRIBUTION MANIFOLD	VORTEX	5 VALVE DISTRIBUTION MANIFOLD. PRE-WIRED TO ALL SOLENOIDS AND BALL VALVES WITH MANIFOLD DRAIN	1
WATER QUALITY MANAGEMENT SYSTEMS			
COMPOUND GAUGE	WINTERS INSTRUMENTS	COMPOUND GAUGE, 0-30" Hg / 0-60 PSI	1
FILTRATION PUMP	PENTAIR WHISPER-FLO WFK-12	3 HP SELF PRIMING PUMP, 230V/160, 120GPM @ 60 FT HD. NSF CERTIFIED, C/W "SOFT START". WADING POOL HAS 2 HP SELF PRIMING PUMP, 231V/160, 60 GPM @ 40 FT HD. 7.06 SQ. FT., 108 GPM @ 160PSI @ 3" DIAMETER.	1
SAND FILTER	PENTAIR, TRITON B, TR140C	INCLUDES NSF CERTIFIED. WADING POOL DOES NOT HAVE A FILTER OR RELATED ACCESSORIES.	1
CHEMICAL CONTROLLER	STRANTRON SYSTEM 3	HRR AND PH CONTROL WITH OUT OF RANGE ALARM. NSF CERTIFIED.	1
CHEMICAL INJECTOR	BLUEWHITE IND. A 1828A-6T	UP TO 10000 FEED CAPACITY, NSF CERTIFIED.	2
CHEMICAL RESERVOIR	VORTEX	DOUBLE WALL 95 GAL. POLYETHYLENE TANK, 28.5" DIA. X 38" H. 40 CFR CERTIFIED.	2
INFLUENT PRESSURE GAUGE	WINTERS INSTRUMENTS	PRESSURE GAUGE, 0 - 60 PSI	1
EFFLUENT PRESSURE GAUGE	WINTERS INSTRUMENTS	PRESSURE GAUGE, 0 - 60 PSI	1
FLOW METER	BLUEWHITE PHX300K4	DIGITAL FLOW SENSOR	1
FLOW SWITCH	WINTERS INSTRUMENTS	FLOW SWITCH, 24V	1
FLOW METER	BLUEWHITE 300 SERIES	3" PIPE FLOW METER, 40-140 GPM READING	2
DISTRIBUTION SYSTEM			
COMPOUND GAUGE	WINTERS INSTRUMENTS	COMPOUND GAUGE, 0-30" Hg / 0-60 PSI	1
CIRCULATION PUMP	PENTAIR, EQK-500	1 HP SELF PRIMING PUMP, 115V/60, 120 GPM @ 70 FT HD. NSF CERTIFIED, C/W SOFT START	1
COMPOUND GAUGE	WINTERS INSTRUMENTS	PRESSURE GAUGE, 0 - 60 PSI	1
Y-STRAINER	MARK	4" Y-STRAINER WITH 40 MESH BASKET	1
FLOW METER	BLUEWHITE 300 SERIES	4" PIPE FLOW METER, 125-600 GPM READING	1
FLOW METER	MARK	FLOW SWITCH, 24V	1



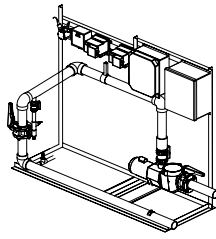
2 SPLASH PAD DISTRIBUTION SYSTEM PACKAGE

3 SPLASH PAD WATER QUALITY MANAGEMENT SYSTEM PACKAGE



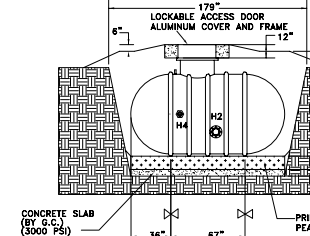
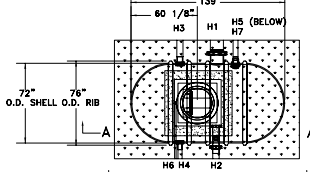
4 WADING POOL SYSTEM LINE SCHEMATIC

LINE SIZE CONNECTION CHART				
By	From	To	Item	Size
VORTEX	PLAY PRODUCT PUMP G	WATER DISTRIBUTION MANIFOLD E	L3	4"
VORTEX	FILTRATION PUMP G	SAND FILTER H	L7	3"
BY MECH. SUB.	DECK DRAIN, 8" OUTLET	WATER CONTAINMENT SYSTEM H	L1	12"
BY MECH. SUB.	WATER CONTAINMENT SYSTEM H2	PLAY PRODUCT PUMP G	L2	6"
BY MECH. SUB.	WATER DISTRIBUTION MANIFOLD E	WATER CONTAINMENT SYSTEM H3	L4	2"
BY MECH. SUB.	WATER DISTRIBUTION MANIFOLD E	PLAY PRODUCTS	L5	SEE DRWG.
BY MECH. SUB.	WATER CONTAINMENT SYSTEM H4	FILTRATION PUMP G	L6	4"
BY MECH. SUB.	SAND FILTER H	SAN ITARY SEWER SYSTEM	L8	3"
BY MECH. SUB.	SAND FILTER H	WATER CONTAINMENT SYSTEM H5	L9	3"
BY MECH. SUB.	CITY WATER MAIN	WATER CONTAINMENT SYSTEM H6	L10	1"
BY MECH. SUB.	WATER CONTAINMENT SYSTEM H7	SAN ITARY SEWER SYSTEM	L11	4"



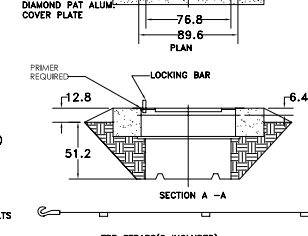
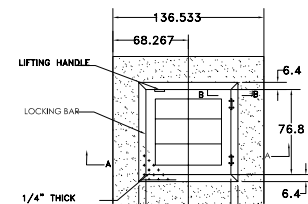
7 WADING POOL WATER QUALITY MANAGEMENT AND DISTRIBUTION PACKAGE (NO SAND FILTER)

NOTE:
1. 1" POLYPROPYLENE FLOAT VALVE IS PRESENT ON FRESH WATER INLET, WITH 6" AIR GAP.
2. HOLDING TANK INTERIOR IS SUITABLE FOR PORTABLE WATER.

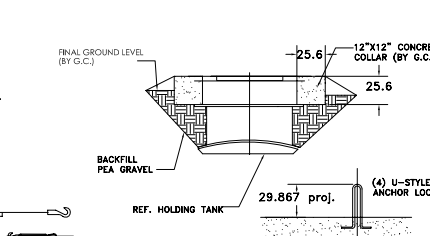
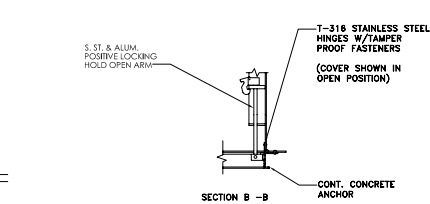


5 HOLDING TANK DETAILS

LINE	DESCRIPTION	SIZE	HEIGHT FROM OIL
H1	MAIN DRAIN INLET	12"	6"
H2	FEATURE OUTLET	6"	16"
H3	FEATURE RETURN	4"	0"
H4	FILTER OUTLET	3"	0"
H5	FILTER RETURN	3"	0"
H6	FRESH WATER INLET	1"	40"
H7	OVERFLOW	4"	14"



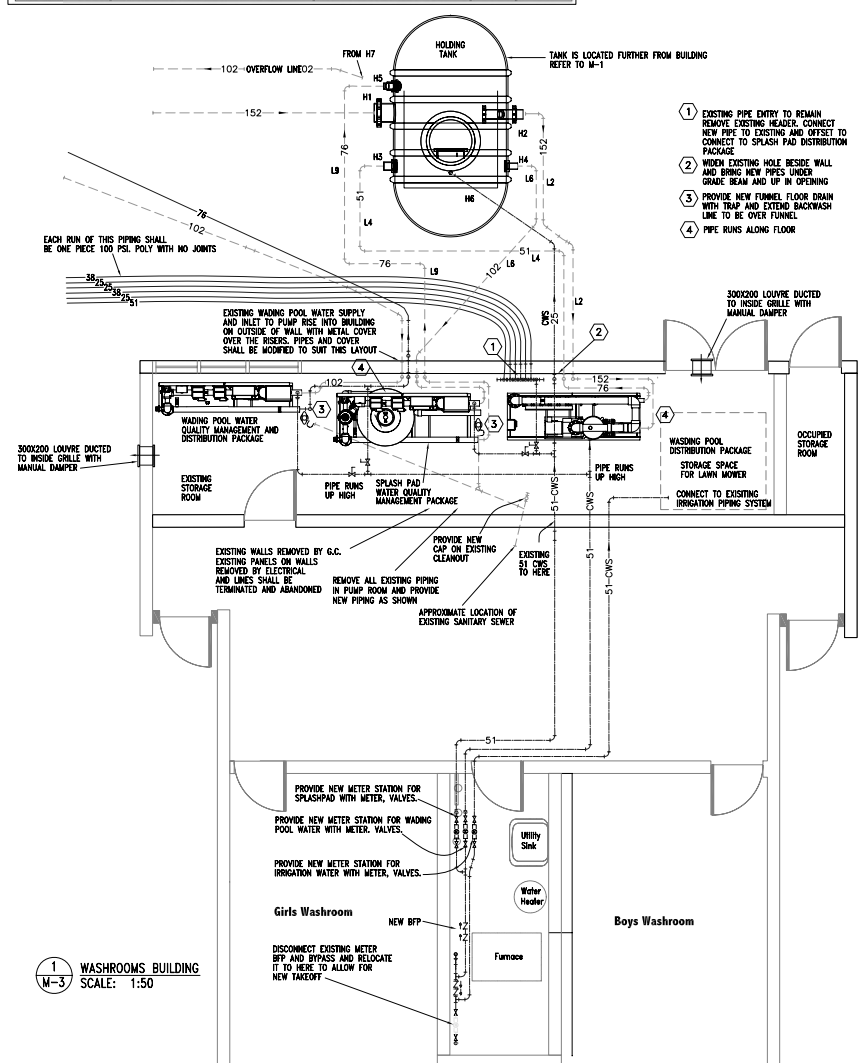
5 HOLDING TANK DETAILS



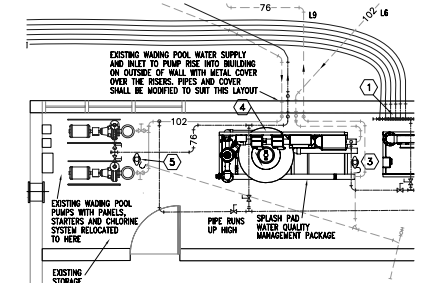
5 HOLDING TANK DETAILS

PIPING SYMBOLS			
—	PIPE TURNING DOWN	—	CROSS AND RISER
—	PIPE TURNING UP	—	PLAN ELBOW
—	TEE DOWN	—	PLAN DROP AND TURN
—	TEE UP	—	PLAN TEE
—	DROP AND SUN	—	PLAN TEE
—	TEE OFF TOP	—	PLAN TEE
—	TEE OFF BOTTOM	—	PLAN TEE

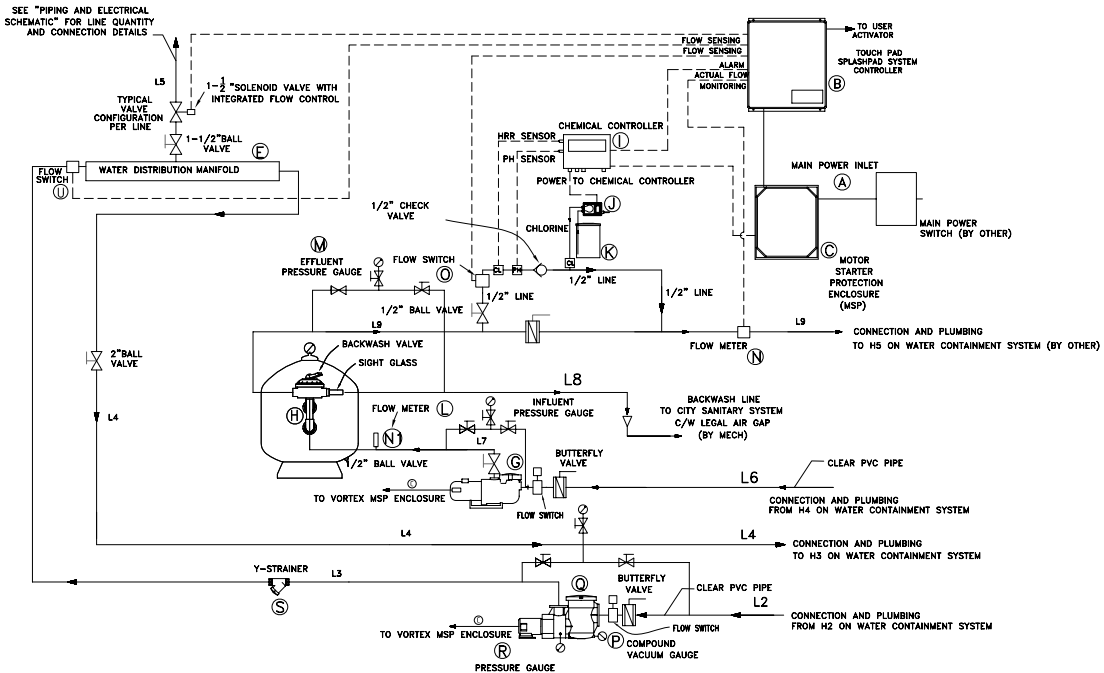
MANUAL VALVE LEGEND			
—	GATE (NO)	—	PRV
—	GATE (NC)	—	PULL
—	BUTTERFLY	—	3-WAY
—		—	CHECK
—		—	RELIEF



1 WASHROOMS BUILDING SCALE: 1:50



1 ALTERNATE WADING PUMP SYSTEM SCALE: 1:50



6 SPLASH PAD SYSTEM LINE SCHEMATIC

VIMY RIDGE MEMORIAL PARK PLAYGROUND AREA

HILDERMAN THOMAS FRANK CREAM
 Faraci Engineering Ltd.
 No. 998 Expiry: April 30, 2006

APCCM
 Certificate of Authorization
 Faraci Engineering Ltd.
 No. 998 Expiry: April 30, 2006

PROVINCE OF MANITOBA
 REGISTERED PROFESSIONAL ENGINEER
 E.J. FARACI

PUMP ROOM & WATER QUALITY MANAGEMENT DETAILS

Drawn	EJF	Approved	EJF
Scale	1:100	Date	03/3/06
Job	0441	Drawing	M-3