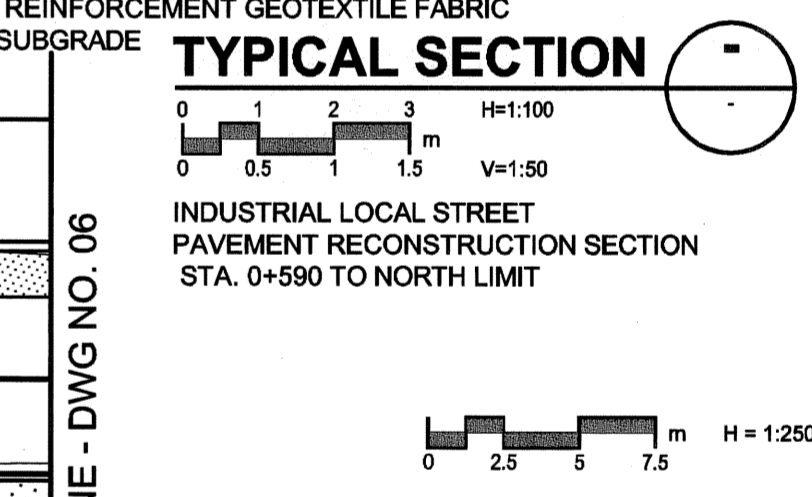
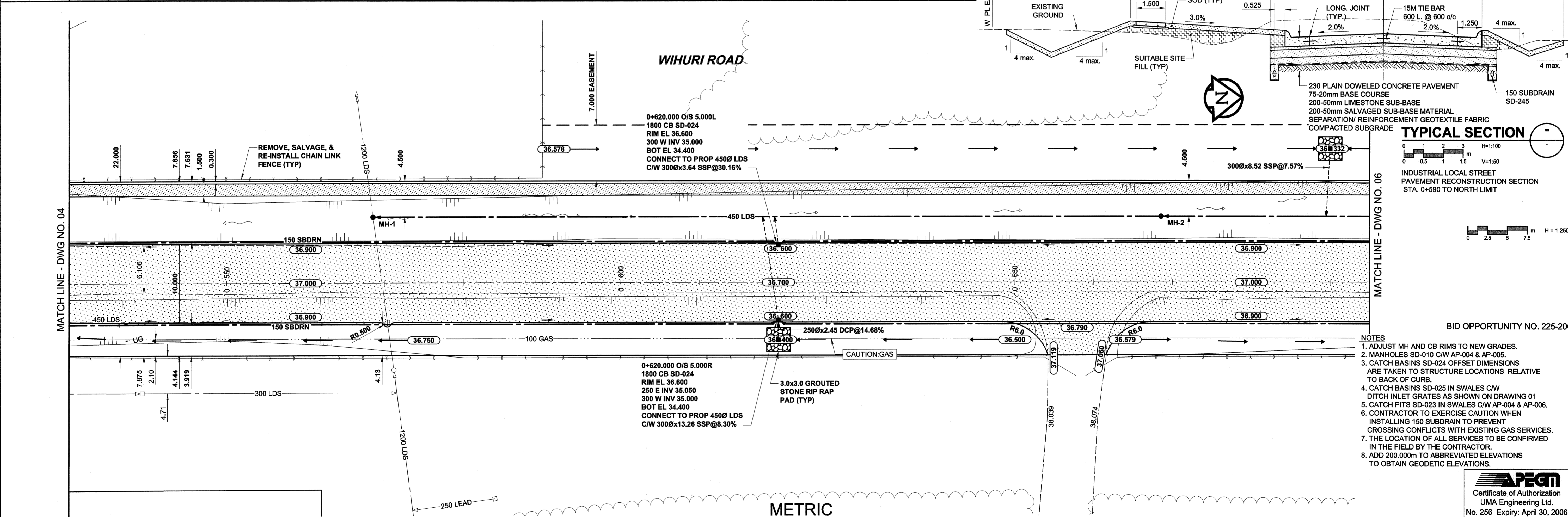
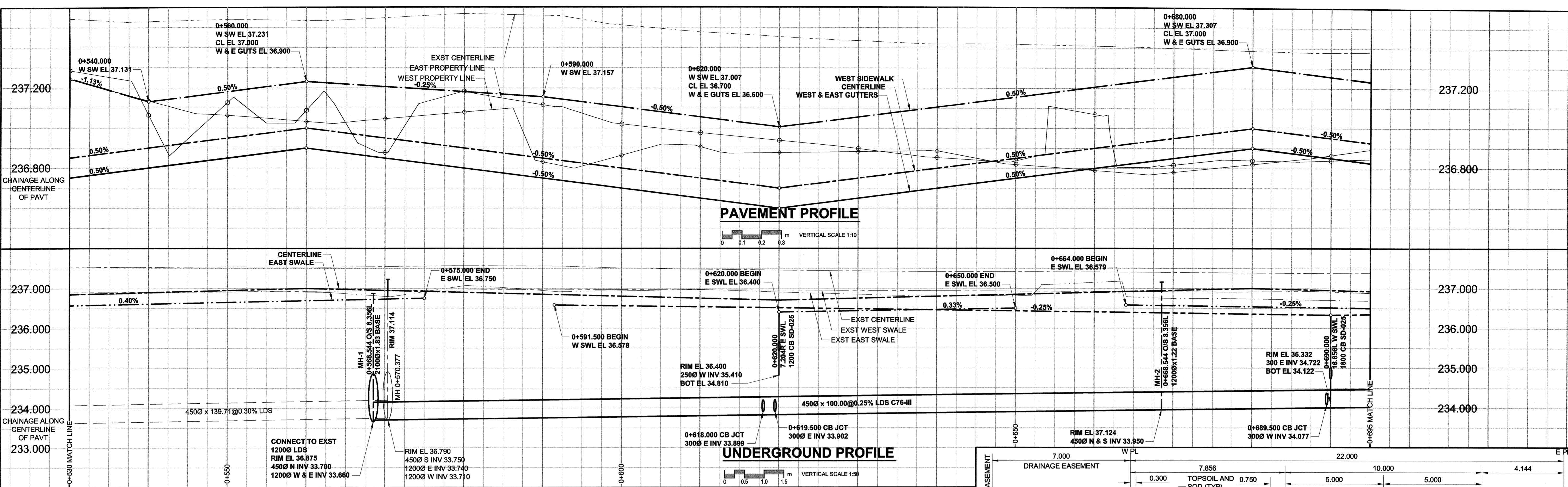


A1 SIZE 23.4" x 33.1" (594mm x 841mm)

PL01: 05/06/03 2:25:33 PM

UMA FILE NAME: 0265-370-00\_01-CT1005\_RX.dwg Saved By: ddoszpud



- NOTES
1. ADJUST MH AND CB RIMS TO NEW GRADES.
  2. MANHOLES SD-010 C/W AP-004 & AP-005.
  3. CATCH BASINS SD-024 OFFSET DIMENSIONS ARE TAKEN TO STRUCTURE LOCATIONS RELATIVE TO BACK OF CURB.
  4. CATCH BASINS SD-025 IN SWALES C/W DITCH INLET GRATES AS SHOWN ON DRAWING 01
  5. CATCH PITS SD-023 IN SWALES C/W AP-004 & AP-006. CONTRACTOR TO EXERCISE CAUTION WHEN INSTALLING 150 SUBDRAIN TO PREVENT CROSSING CONFLICTS WITH EXISTING GAS SERVICES.
  7. THE LOCATION OF ALL SERVICES TO BE CONFIRMED IN THE FIELD BY THE CONTRACTOR.
  8. ADD 200.000m TO ABBREVIATED ELEVATIONS TO OBTAIN GEODETIC ELEVATIONS.

**METRIC**  
WHOLE NUMBERS INDICATE MILLIMETRES  
DECIMALIZED NUMBERS INDICATE METRES

NATURAL GAS	○	MANHOLE	●	CONCRETE PAVEMENT	[Pattern]	LOCATION APPROVED	BM 39-035 ELEV 236.740m
COMMUNICATION	□	CATCH BASIN / CATCH PIT	■	ASPHALT PAVEMENT	[Pattern]	UNDERGROUND STRUCTURES	
ELECTRICAL	△	C & G INLET WITH BOX	◻	CONC. SIDEWALK/MEDIAN	[Pattern]		
CATV	◇	TREE	○	PAVING STONE	[Pattern]	SUPR. U/G STRUCTURES	DATE
TRAFFIC SIGNALS	⊕	TEST HOLE	⊙	TOPSOIL & SOD	[Pattern]	NOTE:	
LAND DRAINAGE SEWER	—	PROPERTY LINE	—	GRAVEL	[Pattern]	LOCATION OF UNDERGROUND STRUCTURES	
SANITARY/COMBINED SEWER	—	SURVEY BAR	—	RAMP CURB	[Pattern]	AS SHOWN ARE BASED ON THE BEST	
CATCHBASIN LEAD	—	FENCE	—	REMOVAL	[Pattern]	INFORMATION AVAILABLE. BUT NO	
WATERMAIN	—	BOC/EOPAVT	—			GUARANTEE IS GIVEN THAT ALL EXISTING	
SUBDRAIN	—	ELEVATION	33.100			UTILITIES ARE SHOWN OR THAT THE GIVEN	
DITCH	—					LOCATIONS ARE EXACT. CONFIRMATION OF	
EXISTING	—					EXISTENCE AND EXACT LOCATION OF ALL	
LEGEND - PLAN	NEW	EXISTING	LEGEND - PLAN	NEW	EXISTING	SERVICES MUST BE OBTAINED FROM THE	
						INDIVIDUAL UTILITIES BEFORE PROCEEDING	
						WITH CONSTRUCTION.	

DESIGNED BY	JGK	CHECKED BY	RB
DRAWN BY	DID	APPROVED BY	Barb
HOR. SCALE	1:250	RELEASED FOR CONSTRUCTION	Barb
VERT. SCALE	AS SHOWN	DATE	JUNE 7, 2005
DATE	05/06/06		

**UMA**  
An AECOM Company  
2005 UMA ENGINEERING LTD. ALL RIGHTS RESERVED.

PROFESSIONAL'S SEAL  
PROVINCE OF MANITOBA  
J.G. KENNEDY  
Member  
22326  
JUN 3/05  
REGISTERED PROFESSIONAL ENGINEER  
CONSULTANT DRAWING NO. 05  
0265-370-00

**THE CITY OF WINNIPEG**  
PUBLIC WORKS DEPARTMENT  
ENGINEERING DIVISION

**WIHURI ROAD**  
PETER AVENUE TO SASKATCHEWAN AVENUE  
NEW TRANSPORTATION FACILITY  
ROAD CONSTRUCTION, LAND DRAINAGE SEWER,  
AND ASSOCIATED WORKS  
HORIZONTAL AND VERTICAL ALIGNMENT  
FROM STA. 0+530 TO STA. 0+695

CITY DRAWING NUMBER: N/A  
SHEET: 5 OF 7  
DRAWING NO.: 05  
REV: 0