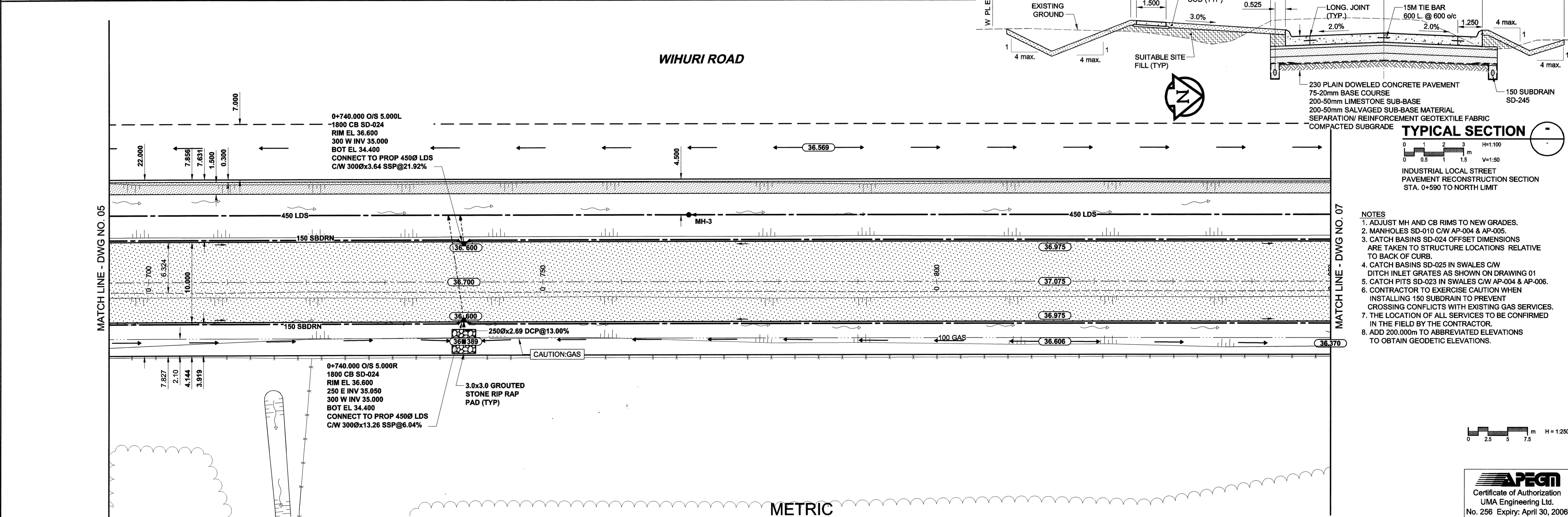
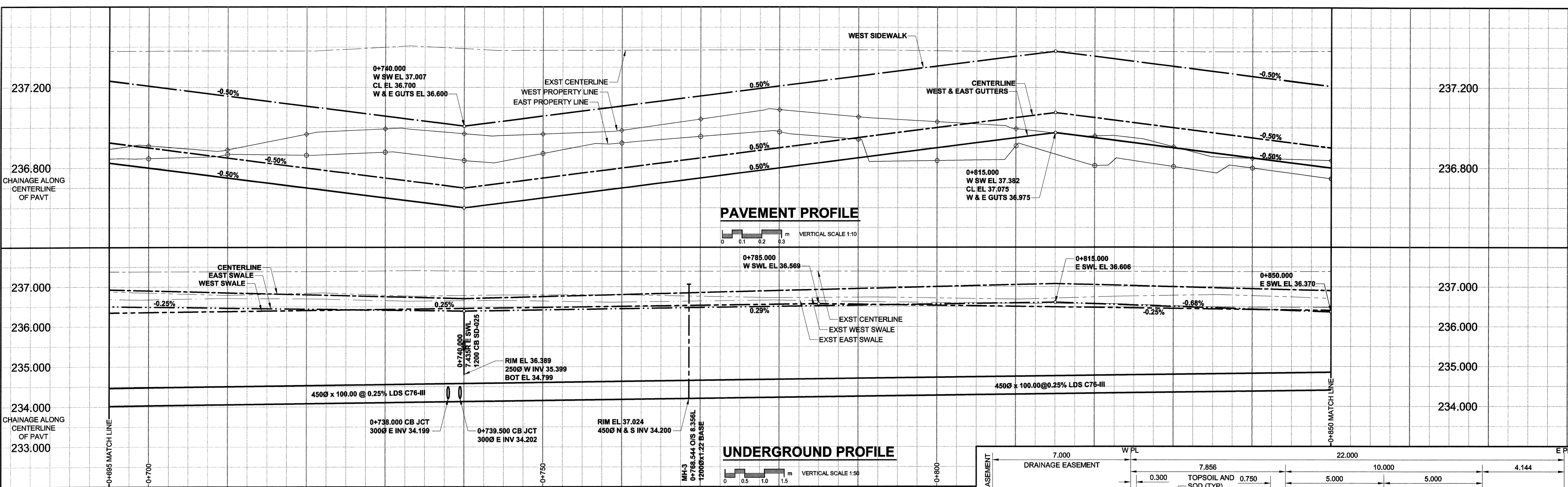


A1 SIZE 24" x 36" (594mm x 841mm)

PLOT: 05/06/03 2:50:54 PM

UMA FILE NAME: 0265-370-00_01-CT1006_RX.dwg Saved By: dtdaszpod



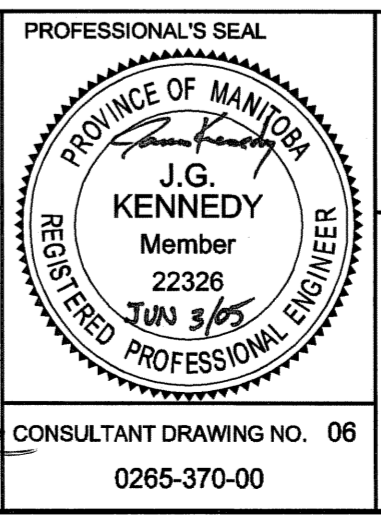
WIHURI ROAD

METRIC
WHOLE NUMBERS INDICATE MILLIMETRES
DECIMALIZED NUMBERS INDICATE METRES

NATURAL GAS	○	MANHOLE	●	CONCRETE PAVEMENT	[Pattern]
COMMUNICATION	□	CATCH BASIN / CATCH PIT	■	ASPHALT PAVEMENT	[Pattern]
ELECTRICAL	△	C & G INLET WITH BOX	■	CONC. SIDEWALK/MEDIAN	[Pattern]
CATV	◇	TEST HOLE	○	PAVING STONE	[Pattern]
TRAFFIC SIGNALS	⊕	PROPERTY LINE	—	TOPSOIL & SOD	[Pattern]
LAND DRAINAGE SEWER	—	SURVEY BAR	—	GRAVEL	[Pattern]
SANITARY/COMBINED SEWER	—	FENCE	—	RAMP CURB	[Pattern]
CATCHBASIN LEAD	—	BOC/EOPAVT	—	REMOVAL	[Pattern]
WATERMAIN	—	ELEVATION	33.100		
SUBDRAIN	—				
DITCH	—				
EXISTING		LEGEND - PLAN		EXISTING	
		NEW		NEW	

LOCATION APPROVED UNDERGROUND STRUCTURES		BM 39-035 ELEV 236.740m
SUPR. U/G STRUCTURES	DATE	
COMMITTEE		
NOTE: LOCATION OF UNDERGROUND STRUCTURES AS SHOWN ARE BASED ON THE BEST INFORMATION AVAILABLE. BUT NO GUARANTEE IS GIVEN THAT ALL EXISTING UTILITIES ARE SHOWN OR THAT THE GIVEN LOCATIONS ARE EXACT. CONFIRMATION OF EXISTENCE AND EXACT LOCATION OF ALL SERVICES MUST BE OBTAINED FROM THE INDIVIDUAL UTILITIES BEFORE PROCEEDING WITH CONSTRUCTION.		
NO.	REVISIONS	DATE
0	ISSUED FOR CONSTRUCTION	05/06/06 DID
A	ISSUED FOR CLIENT REVIEW	05/05/06 DID
	YYMMDD	BY

uma An AECOM Company 2005 UMA ENGINEERING LTD. ALL RIGHTS RESERVED.	
DESIGNED BY: JGK	CHECKED BY: RB
DRAWN BY: DID	APPROVED BY: RB
HOR. SCALE: 1:250	RELEASED FOR CONSTRUCTION: [Signature]
VERT. SCALE: AS SHOWN	DATE: JUNE 7/2005
DATE: 05/06/06	CONSULTANT DRAWING NO. 06



THE CITY OF WINNIPEG
PUBLIC WORKS DEPARTMENT
ENGINEERING DIVISION

WIHURI ROAD
PETER AVENUE TO SASKATCHEWAN AVENUE
NEW TRANSPORTATION FACILITY
ROAD CONSTRUCTION, LAND DRAINAGE SEWER,
AND ASSOCIATED WORKS
HORIZONTAL AND VERTICAL ALIGNMENT
FROM STA. 0+695 TO STA. 0+850

CITY DRAWING NUMBER: N/A
SHEET 6 OF 7
DRAWING NO. 06
REV 0

BID OPPORTUNITY NO. 225-2005