

HELIFIX INSTALLATION PROCEDURES

INSTALL HELIFIX STAINLESS STEEL TIES INTO EXTERIOR STONE CLADDING (DRYFIX TECHNIQUE) AT SPECIFIED SPACING. PATCH ALL PENETRATIONS TO MATCH EXISTING SURFACE USING DOW CORNING 790 SEALANT.

- A 8.0mm ENTRY HOLE SHALL BE PREDRILLED THROUGH THE EXISTING STONE PANEL AND CONTINUOUSLY DRILLED INTO THE PRE-CAST CONCRETE STRUCTURAL BACK-UP TO A HORIZONTAL PENETRATION DEPTH OF NOT LESS THAN 3.00". THIS DRILL PROCEDURE IS TO BE CARRIED OUT BY MEANS OF A HIGH SPEED ELECTRIC HAMMER DRILL (3 JAW CHUCK TYPE).

- NOTE: A DRYFIX SUPPORT TOOL MAY BE REQUIRED WHEN INSTALLING LONGER LENGTHS OF HELIFIX TIE INTO DENSE CONCRETE UNITS.

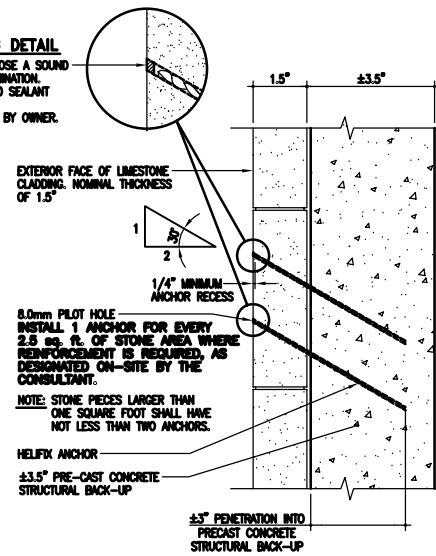
- THE 10mm HELIFIX 304 STAINLESS STEEL ANCHOR SHALL THEN BE DRIVEN INTO POSITION WITH A HELIFIX 'DRYFIX' POWER TOOL MOUNTED ON AN S.D.S. TYPE CONCRETE HAMMER DRILL AND RECESSED 1/4" FROM THE SURFACE. THE STONE SHALL THEN BE PATCHED AT THE LOCATIONS OF THE PENETRATIONS TO MATCH EXISTING ADJACENT STONE SURFACE AS PER SPECIFICATIONS.

- CONTRACTOR TO OBTAIN ALL RELEVANT DRILL BITS AND SETTING TOOLS FROM HELIFIX CORPORATION OF NORTH AMERICA LIMITED.

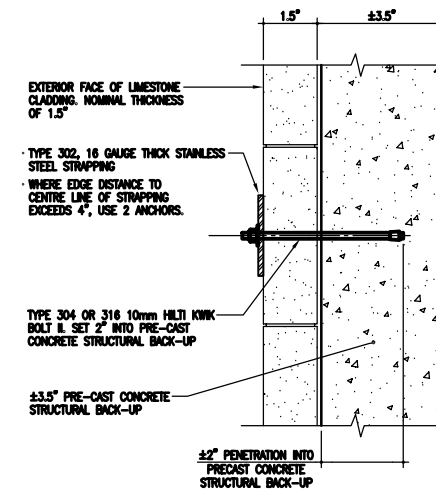
- SEE SPECIFICATION REGARDING FURTHER INFORMATION WITH RESPECT TO METHODS AND MATERIALS.

WEATHER SEALING DETAIL

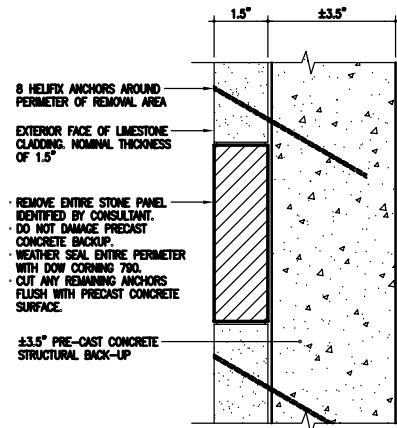
CLEAN SUBSTRATE TO EXPOSE A SOUND SURFACE FREE OF CONTAMINATION.
INSTALL DOW CORNING 790 SEALANT DRY TOOLING ONLY.
COLOUR TO BE APPROVED BY OWNER.



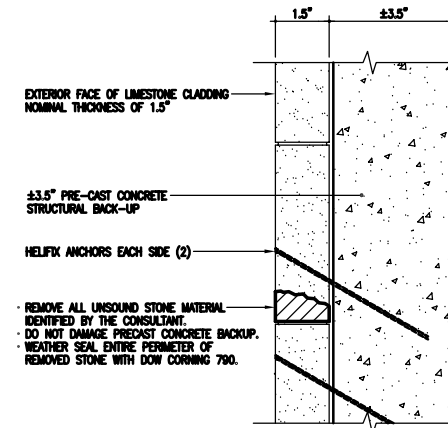
A HELIFIX ANCHOR DETAIL
SK-2 N.T.S. UNIT PRICE



B HILTI KWIK BOLT II STRAPPING DETAIL
SK-2 N.T.S. UNIT PRICE



C STONE PANEL REMOVAL
SK-2 N.T.S. UNIT PRICE



D REMOVAL OF SECTIONS OF STONE PANEL
SK-2 N.T.S. UNIT PRICE

The General Contractor shall check & verify all dimensions and shall report any errors or omissions to the designers.

| No. | Date | Revisions | By |
|-----|------|-----------|----|
| | | | |
| | | | |
| | | | |
| | | | |



| | | | | | | | |
|--|-------------|----------------|-------------------|-------------------|------------------|--|--------------------------|
| Project PUBLIC SAFETY BUILDING WINNIPEG, MANITOBA | | | | | | | Sheet No. SK-2 |
| Drawing Title DETAILS AND NOTES | | | | | | | |
| Design HTW | Drawn TW | Checked JMW | Scale AS NOTED | Date FEB 22/05 | File 2005-117 | | |