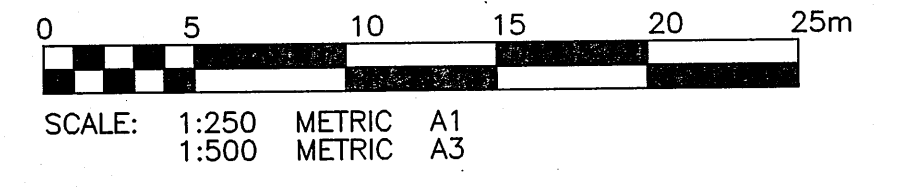


- NOTES:
1. ADJUST MH AND CB RIMS TO NEW GRADES
 2. EXERCISE CAUTION INSTALLING SUBDRAIN TO PREVENT CROSSING CONFLICTS WITH EXISTING GAS SERVICES
 3. AVOID DAMAGE TO EXISTING BOULEVARD TREES WITHIN THE LIMITS OF CONSTRUCTION
 4. REGRADE EXISTING PRIVATE SIDEWALKS AS REQUIRED
 5. LIGHT STANDARDS, HYDRO POLES AND ANCHORS MAY REQUIRE TEMPORARY SUPPORT/REMOVAL OR REPLACEMENT AT THE CONTRACTORS EXPENSE
 6. PLUG SUBDRAINS AT TERMINAL ENDS
 7. RENEW EXISTING 150 REINFORCED CONCRETE APPROACH (SD-235)
 8. INSTALL CATCH BASIN (SD-024)
 9. ABANDON EXISTING DRAINAGE INLET
 10. ABANDON EXISTING CATCH BASIN
 11. INSTALL CATCH PIT (SD-023) AND DRAINAGE CONNECTION PIPE
 12. ALL MEASUREMENTS ARE TO BACK OF CURB

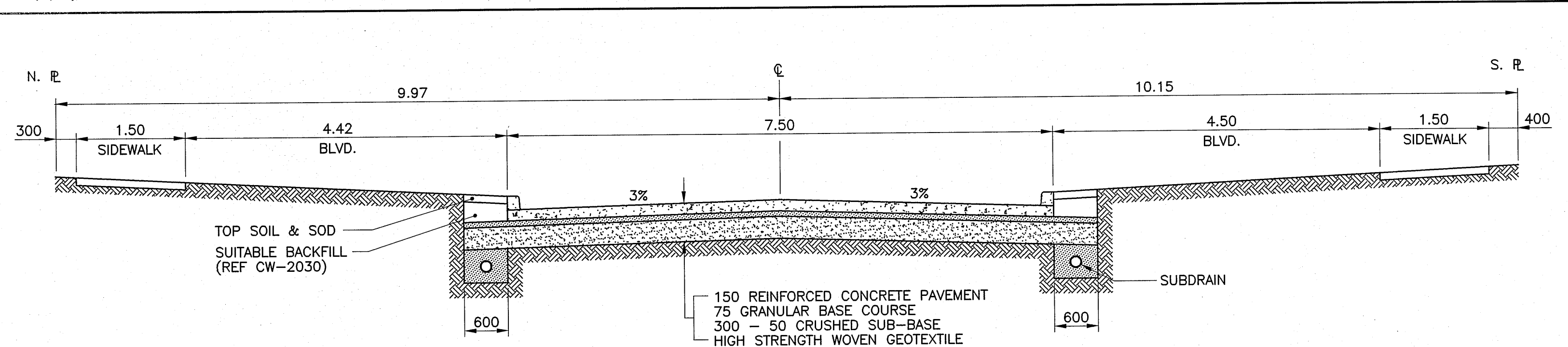


WARNING

IF POWER EQUIPMENT OR EXPLOSIONS ARE TO BE USED FOR EXCAVATION ON THIS PROJECT THE CONTRACTOR MUST:
 1) NOTIFY THE GAS COMPANY OF THE PROPOSED LOCATION OF EXCAVATION.
 2) TAKE PRECAUTION TO AVOID DAMAGE TO GAS COMPANY INSTALLATIONS.
 SEE PROVINCIAL REGULATION 210/72 FOR DETAILS.

METRIC

WHOLE NUMBERS INDICATE MILLIMETRES
 DECIMALIZED NUMBERS INDICATE METRES



TYPICAL ROAD X-SECTION
 SCALE: 1:50

P:\PROJECTS\2004\04-107-17\MUN\DWGS\MCADAM.DWG\MCADAM-PLOT.DWG

EXISTING	LEGEND-PLAN	PROPOSED	EXISTING	LEGEND-PLAN	PROPOSED	EXISTING	LEGEND-PROFILE	PROPOSED
300 LBS	LAND DRAINAGE SEWER	300 LBS	⊙	TEST HOLE	⊙	---		
250 WWS	WASTE WATER SEWER	250 WWS	⊙	GUY WIRE	⊙	---		
	GAS		⊙	LIGHT STANDARD	⊙	---		
	HYDRO		⊙	BACK OF CURB	⊙	---		
	M.T.S.		⊙	CONCRETE	⊙	---		
150 WM	WATERMAIN	150 WM	⊙	ASPHALT	⊙	---		
⊙	HYDRANT	⊙	⊙	SIDEWALK	⊙	---		
⊙	VALVE	⊙	⊙	RENEW DRIVEWAY	⊙	---		
⊙	MANHOLE	⊙	⊙	PROPERTY LINE	⊙	---		
⊙	CATCH BASIN	⊙	⊙	SURVEY BAR	⊙	---		
⊙	CURB INLET	⊙	⊙	GEODETIC BENCHMARK	⊙	---		
⊙	POLES	⊙	⊙	ELEVATION	⊙	---		
			⊙			---		

LOCATION APPROVED UNDERGROUND STRUCTURES

SUPV. U/G STRUCTURES COMMITTEE DATE

NOTE:
 LOCATION OF UNDERGROUND STRUCTURES AS SHOWN ARE BASED ON THE BEST INFORMATION AVAILABLE BUT NO GUARANTEE IS GIVEN THAT THE GIVEN LOCATIONS ARE EXACT. CONFIRMATION OF EXISTENCE AND EXACT LOCATION OF ALL SERVICES MUST BE OBTAINED FROM THE INDIVIDUAL UTILITIES BEFORE PROCEEDING WITH CONSTRUCTION.

B.M. ELEV.	NO.	ISSUED FOR TENDER	DATE	BY
26-044 231.698				
	0	ISSUED FOR TENDER	05/04/28	CR
		NO. REVISIONS	DATE	BY

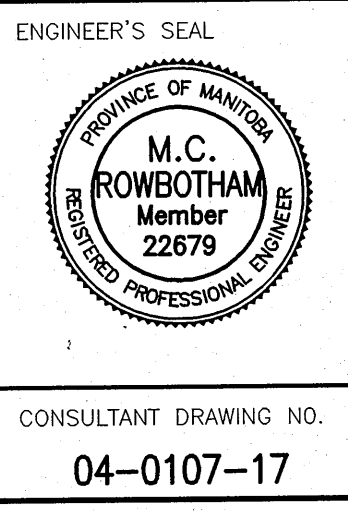
KGS CONSULTING ENGINEERS & PROJECT MANAGERS GROUP

WINNIEPEG (204) 896-1209
 THUNDER BAY (807) 345-2233

DESIGNED BY: C.R.
 CHECKED BY: []
 DRAWN BY: A.M.
 APPROVED BY: []

HOR. SCALE: 1:250
 VERTICAL: 1:50

RELEASED FOR CONSTRUCTION: []
 DATE: 06/04/05



THE CITY OF WINNIPEG PUBLIC WORKS DEPARTMENT ENGINEERING SERVICES DIVISION

PROJECT TITLE: 2005 RESIDENTIAL STREET RENEWALS
 McADAM AVENUE PAVEMENT RECONSTRUCTION

SHEET 03 OF 04
 COMPUTER FILE NAME: McADAM-PLOT.DWG
 CITY DRAWING NUMBER: 0003

BID OPPORTUNITY NO. 241-2005
 No. 245 Expiry: April 30, 2006

CONSULTANT DRAWING NO. 04-0107-17