

NOTE: CHAINAGES SHOWN ARE ALONG E. R. OF FOUNTAIN ST.

FOUNTAIN STREET

WATER SERVICE INFORMATION

ADDRESS	SIZE(mm) & TYPE (STREET)	SIZE(mm) & TYPE (PROP)	SHORT & LONG MEASUREMENT	CORP. LOCATION	REMARKS
246 FOUNTAIN ST RESIDENTIAL	20 COPPER	20	3.66 NSL HSE	0.92 S OF S/C	-
254 FOUNTAIN ST RESIDENTIAL	13 COPPER	13	1.83 NSL ALEXANDER	0.60 N OF S/C	RENEW W/20 COPPER
258 FOUNTAIN ST RESIDENTIAL	13 LEAD	13	1.83 SSL #258	0.60 N OF S/C	RENEW W/20 COPPER
259 FOUNTAIN ST COMMERCIAL	25 COPPER	25	0.61 NSL BLDG	OPP S/C	-
263 FOUNTAIN ST RESIDENTIAL	20 COPPER	20	52.43 SSL LOGAN	2.44 N OF S/C	-
263 FOUNTAIN ST RESIDENTIAL	20 COPPER	20	0.30 SNL HSE	0.92 S OF S/C	-
263 FOUNTAIN ST RESIDENTIAL	20 COPPER	20	1.83 SSL BLDG	0.92 S OF S/C	-
264 FOUNTAIN ST RESIDENTIAL	13 LEAD	13	35.05 SSL LOGAN	1.83 N OF S/C	RENEW W/20 COPPER
264 FOUNTAIN ST RESIDENTIAL	13 LEAD	13	3.05 NSL HSE	1.83 N OF S/C	RENEW W/20 COPPER
264 FOUNTAIN ST RESIDENTIAL	13 LEAD	13	36.88 SSL LOGAN	1.83 N OF S/C	RENEW W/20 COPPER
293 FOUNTAIN ST COMMERCIAL	-	-	-	-	NO INFO. AVAILABLE
374 HENRY AVE COMMERCIAL	25 COPPER	25	26.67 EEL FOUNTAIN	0.6 W OF S/C	SERV. OFF HENRY
380 HENRY AVE INDUSTRIAL	50 COPPER	50	5.64 NSL BLDG	0.76 S OF S/C	SERV. OFF ELLEN
390 HENRY AVE SPRAWLER	150 PVC	150	5.49 NSL BLDG	OPP S/C	SERV. OFF ELLEN
376 LOGAN AVE COMMERCIAL	25 LEAD	25	1.52 WEL CHURCH	OPP S/C	SERV. OFF LOGAN
381 LOGAN AVE COMMERCIAL	25 COPPER	25	14.94 EEL FOUNTAIN	0.60 S OF S/C	SERV. OFF LOGAN
380 LOGAN AVE COMMERCIAL	20 COPPER	20	28.96 NSL LOGAN	OPP S/C	SERV. OFF LOGAN
380 LOGAN AVE COMMERCIAL	20 LEAD	20	4.88 WEL BLDG	OPP S/C	SERV. OFF LOGAN
378 ALEXANDER AVE RESIDENTIAL	16 LEAD	13	31.30 WM FOUNDATION	OPP S/C	RENEW W/20 COPPER
378 ALEXANDER AVE RESIDENTIAL	16 LEAD	13	4.88 WEL HSE	OPP S/C	SERV. OFF ALEXANDER

\* SERVICES TO BE RENEWED TO R. ALL OTHERS TO BE RECONNECTED

CONSTRUCTION NOTES

- EXPOSE EXISTING WATERMAIN & CONFIRM INVERTS PRIOR TO CONSTRUCTION.
- CONFIRM LOCATION OF ALL SERVICES IN THE FIELD.
- INSTALL WATERMAIN BY TRENCHLESS METHODS.
- TRENCHES AND EXCAVATIONS WITHIN 1 METRE OF A PAVED AREA INCLUDING SIDEWALKS SHALL BE CLASS 3 BACKFILL.
- ALL MATERIALS SHALL CONFORM TO THE CITY OF WINNIPEG STANDARD CONSTRUCTION SPECIFICATIONS.
- MINIMUM COVER TO TOP OF WATERMAIN SHALL BE 2.4 m.
- REPLACE ALL EXISTING LEAD SERVICES FROM PROPOSED WATERMAIN TO R.
- NOTIFY ALL AFFECTED RESIDENTS AND BUSINESSES 24 HOURS IN ADVANCE OF ANY WATER SHUTDOWNS OR DISRUPTION OF SERVICE.

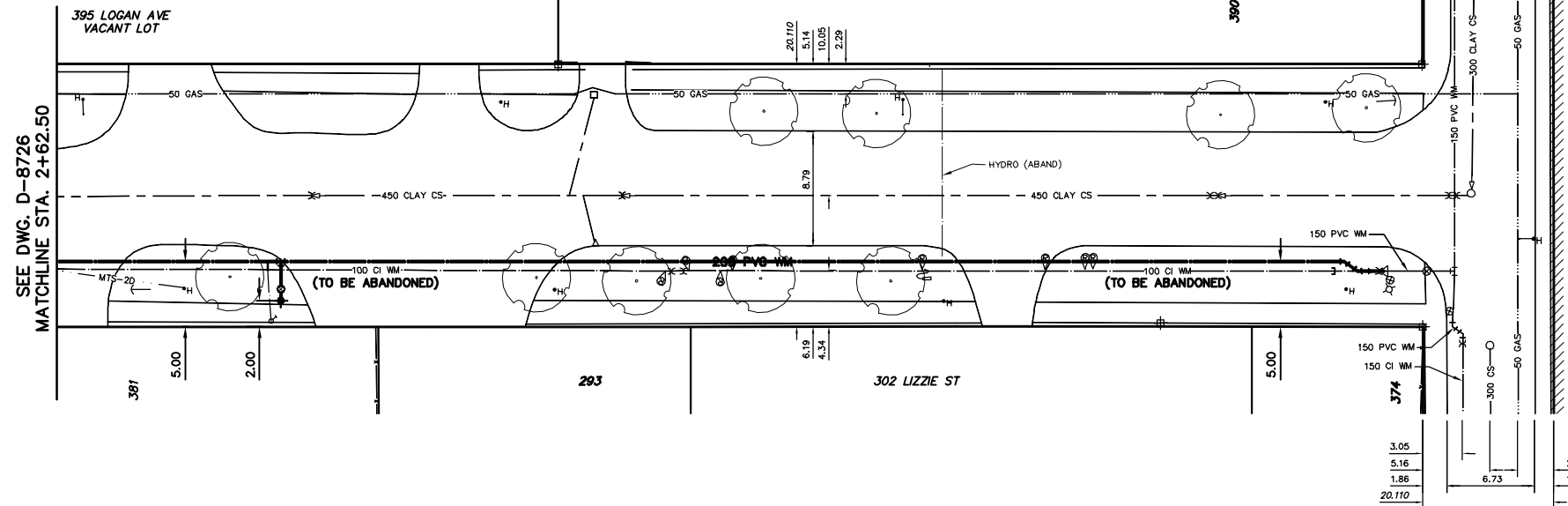
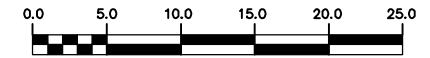
METRIC

WHOLE NUMBERS INDICATE MILLIMETRES  
DECIMALIZED NUMBERS INDICATE METRES

NOTE: ALL VALVES TO BE INSTALLED COUNTERCLOCKWISE TO CLOSE

WARNING

IF POWER EQUIPMENT OR EXPLOSIONS ARE TO BE USED FOR EXCAVATION ON THIS PROJECT THE CONTRACTOR MUST:  
1) NOTIFY THE GAS COMPANY OF THE PROPOSED LOCATION OF EXCAVATION.  
2) TAKE PRECAUTION TO AVOID DAMAGE TO GAS COMPANY INSTALLATIONS.  
SEE PROVINCIAL REGULATION 210/72 FOR DETAILS



200 WM	WATERMAIN	200 WM	SL, HYDRO	150 WM	WATERMAIN	150 WM
+	HYDRANT	+	MTS	+	HYDRANT	+
o	VALVE	o	TRAFFIC SIGNALS	o	VALVE	o
525 LDS	LAND DRAINAGE SEWER	525 LDS	GAS	300 LDS	LAND DRAINAGE SEWER	300 LDS
375 WWS	WASTEWATER SEWER	375 WWS	SURVEY BAR	250 WWS	WASTEWATER SEWER	250 WWS
o	MANHOLE	o	FENCE	o	PROFILE	o
□	CATCH BASIN	□	POLE - HYDRO, MTS	□	GROUND ABOVE PIPE	□
▽	CURB INLET	▽	CURB STOP	▽		▽
△	REDUCER	△	GUY ANCHOR	△		△
X	COUPLING	X	LIGHT STANDARD	X		X
o	ANODE	o	TREE	o		o
EXISTING	LEGEND-PLAN	PROPOSED	EXISTING	LEGEND-PLAN	PROPOSED	EXISTING

LOCATION APPROVED UNDERGROUND STRUCTURES

NOTE: LOCATION OF UNDERGROUND STRUCTURES AS SHOWN ARE BASED ON THE BEST INFORMATION AVAILABLE BUT NO GUARANTEE IS GIVEN THAT ALL EXISTING UTILITIES ARE SHOWN OR THAT THE GIVEN LOCATIONS ARE EXACT. CONFIRMATION OF EXISTENCE AND EXACT LOCATION OF ALL SERVICES MUST BE OBTAINED FROM THE INDIVIDUAL UTILITIES BEFORE PROCEEDING WITH CONSTRUCTION.

NO.	REVISIONS	DATE	BY

CITY OF WINNIPEG  
WATER AND WASTE  
ENGINEERING DIVISION

DESIGNED BY: SC  
CHECKED BY: TW

DRAWN BY: CJH  
APPROVED BY: KZ

HOR. SCALE: 1:250  
VERTICAL: 1:50

RELEASED FOR CONSTRUCTION

DATE: 2005 06 09

ENGINEER'S SEAL  
ORIGINAL SIGNED BY K.R. ZUREK  
05/06/09

THE CITY OF WINNIPEG  
WATER AND WASTE DEPARTMENT

2005 WATERMAIN RENEWALS

FOUNTAIN STREET  
12 m N OF LOGAN AVENUE TO HENRY AVENUE

SHEET 6 OF 16  
CITY DRAWING NUMBER  
D-8727

BID OPPORTUNITY: 244-2005  
FILENAME: D-8726\_8727.dwg  
PLOT DATE: 2005 06 09