

NOTE: CHAINAGES SHOWN ARE ALONG N R OF LANE

WATER SERVICE INFORMATION

ADDRESS	SIZE(mm) & TYPE (STREET)	SIZE(mm) & TYPE (PROP)	SHORT & LONG MEASUREMENT	CORP. LOCATION	REMARKS
177 ARLINGTON ST RESIDENTIAL	20 COPPER	13	4.42 SNL HSE	OPP S/C	SERVED FROM ARLINGTON SEWER JCT MEAS 8.23 N 1ST MH N WESTMINSTER
176 ARLINGTON ST RESIDENTIAL	16 LEAD	13	0.3 NSL #176	2.13 N OF S/C	SERVED FROM ARLINGTON - DBL SER. W/ #176 SEWER JCT MEAS 10.06 N 1ST MH N WESTMINSTER
183 ARLINGTON ST RESIDENTIAL	20 COPPER	20	2.13 SNL FOUNDATION	0.3 N OF S/C	SERVED FROM ARLINGTON SEWER JCT MEAS 23.47 N 1ST MH N WESTMINSTER
187 ARLINGTON ST RESIDENTIAL	13 LEAD	13	2.29 NSL FOUNDATION	0.91 N OF S/C	SERVED FROM ARLINGTON SEWER JCT MEAS 31.09 N 1ST MH N WESTMINSTER
200 ARLINGTON ST COMMERCIAL	50 COPPER	50	6.86 NSL BLDG	79.55 SSL PRESTON	SERVED FROM EVANSON - AKA 189 EVANSON S/C IS 3.96 WEL EVANSON
200 ARLINGTON ST SPRINKLER	150 CI	150	12.19 SSL PRESTON	OPP VALVE	SERVED FROM ARLINGTON - AKA 189 EVANSON VALVE 12.50 E OF W STREET LINE
177 EVANSON ST RESIDENTIAL	20 COPPER	13	0.46 SSL HSE	0.3 N OF S/C	SERVED FROM EVANSON - DBL SER. W/ #175 RECONN NEW MAIN 93/06/15 - UNION 0.4 FROM CORP
180 EVANSON ST RESIDENTIAL	20 COPPER	13	2.29 NSL HSE	0.46 S OF S/C	SERVED FROM EVANSON RECONN NEW MAIN 93/06/15
184 EVANSON ST RESIDENTIAL	20 COPPER	20	1.80 SNL HSE	0.3 N OF S/C	SERVED FROM EVANSON - REV, TAPPED RECONN NEW MAIN 93/06/15 - UNION 0.3 FROM CORP
188 EVANSON ST RESIDENTIAL	20 COPPER	13	0.92 NSL HSE	1.83 S OF S/C	SERVED FROM EVANSON - DBL SER. W/ #190 REV, TAPPED
190 EVANSON ST RESIDENTIAL	20 COPPER	13	0.92 NSL HSE	1.83 S OF S/C	SERVED FROM EVANSON - DBL SER. W/ #188 REV, TAPPED

* SERVICES TO BE RENEWED TO R ALL OTHERS TO BE RECONNECTED

CONSTRUCTION NOTES

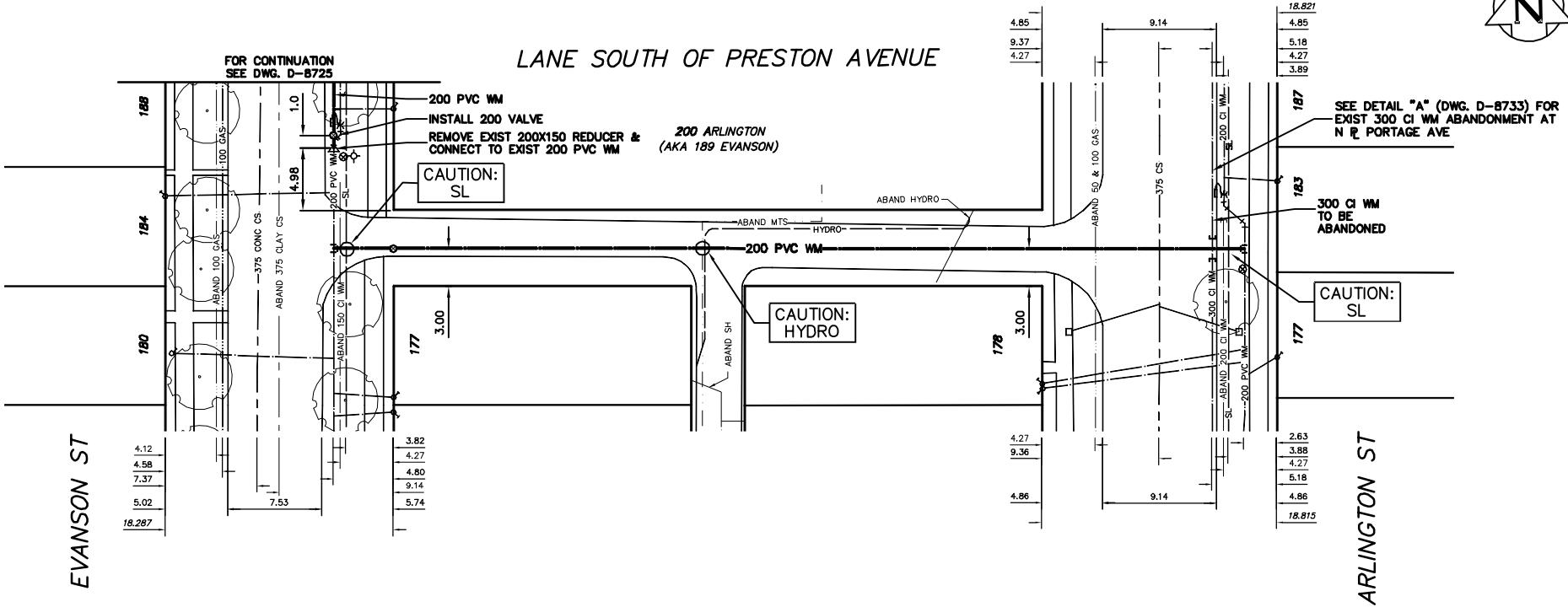
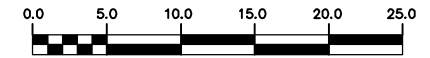
1. EXPOSE EXISTING WATERMAIN & CONFIRM INVERTS PRIOR TO CONSTRUCTION.
2. CONFIRM LOCATION OF ALL SERVICES IN THE FIELD.
3. INSTALL WATERMAIN BY TRENCHLESS METHODS.
4. TRENCHES AND EXCAVATIONS WITHIN 1 METRE OF A PAVED AREA INCLUDING SIDEWALKS SHALL BE CLASS 3 BACKFILL.
5. ALL MATERIALS SHALL CONFORM TO THE CITY OF WINNIPEG STANDARD CONSTRUCTION SPECIFICATIONS.
6. MINIMUM COVER TO TOP OF WATERMAIN SHALL BE 2.4 m.
7. REPLACE ALL EXISTING LEAD SERVICES FROM PROPOSED WATERMAIN TO R.
8. NOTIFY ALL AFFECTED RESIDENTS AND BUSINESSES 24 HOURS IN ADVANCE OF ANY WATER SHUTDOWNS OR DISRUPTION OF SERVICE.

METRIC
WHILE NUMBERS INDICATE MILLIMETRES
DECIMALIZED NUMBERS INDICATE METRES

NOTE: ALL VALVES TO BE INSTALLED COUNTERCLOCKWISE TO CLOSE

WARNING

IF POWER EQUIPMENT OR EXPLOSIVES ARE TO BE USED FOR EXCAVATION ON THIS PROJECT THE CONTRACTOR MUST:
1) NOTIFY THE GAS COMPANY OF THE PROPOSED LOCATION OF EXCAVATION.
2) TAKE PRECAUTION TO AVOID DAMAGE TO GAS COMPANY INSTALLATIONS.
SEE PROVINCIAL REGULATION 210/72 FOR DETAILS



200 WM	WATERMAIN	200 WM	SL, HYDRO	150 WM	WATERMAIN	150 WM
+	HYDRANT	+	MTS	+	HYDRANT	+
o	VALVE	o	TRAFFIC SIGNALS	o	VALVE	o
525 LDS	LAND DRAINAGE SEWER	525 LDS	GAS	300 LDS	LAND DRAINAGE SEWER	300 LDS
375 WWS	WASTEWATER SEWER	375 WWS	SURVEY BAR	250 WWS	WASTEWATER SEWER	250 WWS
o	MANHOLE	o	FENCE	x	PROFILE	
□	CATCH BASIN	□	POLE - HYDRO, MTS	///	GROUND ABOVE PIPE	
▽	CURB INLET	▽	CURB STOP	•		
△	REDUCER	△	GUY ANCHOR			
X	COUPLING	X	LIGHT STANDARD			
o	ANODE	o	TREE			
EXISTING	LEGEND-PLAN	PROPOSED	EXISTING	LEGEND-PLAN	PROPOSED	EXISTING

LOCATION APPROVED UNDERGROUND STRUCTURES

NOTE: LOCATION OF UNDERGROUND STRUCTURES AS SHOWN ARE BASED ON THE BEST INFORMATION AVAILABLE BUT NO GUARANTEE IS GIVEN THAT ALL EXISTING UTILITIES ARE SHOWN OR THAT THE GIVEN LOCATIONS ARE EXACT. CONFIRMATION OF EXISTENCE AND EXACT LOCATION OF ALL SERVICES MUST BE OBTAINED FROM THE INDIVIDUAL UTILITIES BEFORE PROCEEDING WITH CONSTRUCTION.

B.M. ELEV.	FIELD BOOK #
POSTED TO LBS	
NO. REVISIONS	DATE BY

CITY OF WINNIPEG
WATER AND WASTE
ENGINEERING DIVISION

DESIGNED BY: SC
CHECKED BY: TW

DRAWN BY: CJH/PB
APPROVED BY: KZ

HOR. SCALE: 1:250
VERTICAL SCALE: 1:50

RELEASED FOR CONSTRUCTION

DATE: 2005 06 10

ENGINEER'S SEAL
ORIGINAL SIGNED BY K.R. ZUREK
05/06/10

THE CITY OF WINNIPEG
WATER AND WASTE DEPARTMENT

2005 WATERMAIN RENEWALS

LANE S OF PRESTON AVENUE
EVANSON STREET TO ARLINGTON STREET

SHEET 8 OF 16
CITY DRAWING NUMBER D-8729