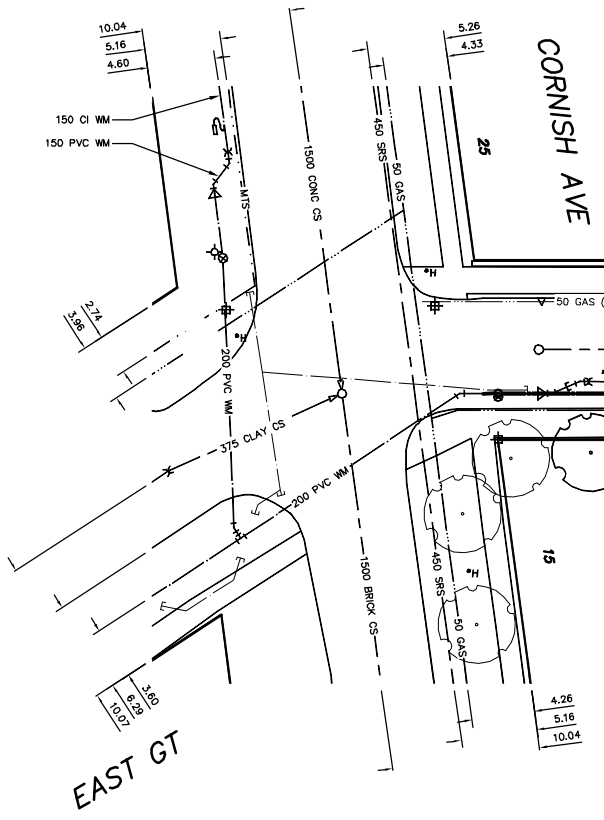


NOTE: CHAINAGES SHOWN ARE ALONG E. R. OF LANGSIDE ST.

- CONSTRUCTION NOTES**
1. EXPOSE EXISTING WATERMAIN & CONFIRM INVERTS PRIOR TO CONSTRUCTION.
 2. CONFIRM LOCATION OF ALL SERVICES IN THE FIELD.
 3. INSTALL WATERMAIN BY TRENCHLESS METHODS.
 4. TRENCHES AND EXCAVATIONS WITHIN 1 METRE OF A PAVED AREA INCLUDING SIDEWALKS SHALL BE CLASS 3 BACKFILL.
 5. ALL MATERIALS SHALL CONFORM TO THE CITY OF WINNIPEG STANDARD CONSTRUCTION SPECIFICATIONS.
 6. MINIMUM COVER TO TOP OF WATERMAIN SHALL BE 2.4 m.
 7. REPLACE ALL EXISTING LEAD SERVICES FROM PROPOSED WATERMAIN TO R.
 8. NOTIFY ALL AFFECTED RESIDENTS AND BUSINESSES 24 HOURS IN ADVANCE OF ANY WATER SHUTDOWNS OR DISRUPTION OF SERVICE.



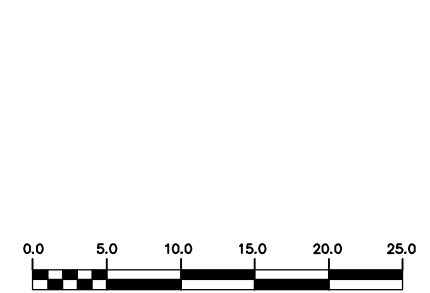
WATER SERVICE INFORMATION

ADDRESS	SIZE(mm) & TYPE	SIZE(mm) & TYPE (PROP)	SHORT & LONG MEASUREMENT	CORP. LOCATION	REMARKS
24 LANGSIDE ST RESIDENTIAL	20 COPPER	13 LEAD	1.83 SNL HSE	1.07 S OF S/C	-
25 LANGSIDE ST RESIDENTIAL	38 COPPER	38 COPPER	15.39 SNL BLDG	OPP S/C	-
26 LANGSIDE ST RESIDENTIAL	13 COPPER	13 COPPER	71.93>NNL CORNISH	OPP S/C	-
34 LANGSIDE ST RESIDENTIAL	38 COPPER	25 COPPER	49.99>NNL CORNISH	OPP S/C	-
38 LANGSIDE ST RESIDENTIAL	38 COPPER	25 COPPER	7.01 NSL BLDG	OPP S/C	-
42 LANGSIDE ST RESIDENTIAL	25 COPPER	25 COPPER	68.14 N OF CORNISH	0.30 S OF S/C	RENEW W/38 COPPER
25 LANGSIDE ST RESIDENTIAL	25 COPPER	25 COPPER	12.04 SNL BLDG	3.05 S OF S/C	RENEW W/25 COPPER
25 LANGSIDE ST RESIDENTIAL	25 COPPER	25 COPPER	OPP NL DOOR	3.05 S OF S/C	RENEW W/25 COPPER
25 LANGSIDE ST RESIDENTIAL	25 COPPER	25 COPPER	109.73>NNL CORNISH	-	-

* SERVICES TO BE RENEWED TO R. ALL OTHERS TO BE RECONNECTED

WATER SERVICE INFORMATION

ADDRESS	SIZE(mm) & TYPE	SIZE(mm) & TYPE (PROP)	SHORT & LONG MEASUREMENT	CORP. LOCATION	REMARKS
48 LANGSIDE ST RESIDENTIAL	13 COPPER	20 COPPER	1.37 NSL HSE	OPP S/C	RENEW W/25 COPPER
50 LANGSIDE ST RESIDENTIAL	25 COPPER	25 COPPER	120.70>NNL CORNISH	OPP S/C	RENEW W/25 COPPER
15 CORNISH AVE RESIDENTIAL	50 COPPER	50 COPPER	31.85 S 1ST HYD S WESTMIN.	0.60 N OF S/C	SERV. OFF LANGSIDE
25 CORNISH AVE RESIDENTIAL	20 COPPER	20 COPPER	16.76>NNL CORNISH	1.22 N OF S/C	SERV. OFF LANGSIDE



METRIC
WHOLE NUMBERS INDICATE MILLIMETRES
DECIMALIZED NUMBERS INDICATE METRES

NOTE: ALL VALVES TO BE INSTALLED COUNTERCLOCKWISE TO CLOSE

WARNING

IF POWER EQUIPMENT OR EXPLOSIVES ARE TO BE USED FOR EXCAVATION ON THIS PROJECT THE CONTRACTOR MUST:

- 1) NOTIFY THE GAS COMPANY OF THE PROPOSED LOCATION OF EXCAVATION.
- 2) TAKE PRECAUTION TO AVOID DAMAGE TO GAS COMPANY INSTALLATIONS.

SEE PROVINCIAL REGULATION 210/72 FOR DETAILS

200 WM	WATERMAIN	200 WM	SL, HYDRO	150 WM	WATERMAIN	150 WM
⊕	HYDRANT	⊕	MTS	⊕	HYDRANT	⊕
⊙	VALVE	⊙	TRAFFIC SIGNALS	⊙	VALVE	⊙
525 LDS	LAND DRAINAGE SEWER	525 LDS	GAS	300 LDS	LAND DRAINAGE SEWER	300 LDS
375 WWS	WASTEWATER SEWER	375 WWS	SURVEY BAR	250 WWS	WASTEWATER SEWER	250 WWS
○	MANHOLE	○	FENCE	⊕	PROFILE	⊕
□	CATCH BASIN	□	POLE - HYDRO, MTS	⊕	GROUND ABOVE PIPE	⊕
▽	CURB INLET	▽	CURB STOP	⊕		⊕
△	REDUCER	△	GUY ANCHOR			
X	COUPLING	X	LIGHT STANDARD			
⊕	ANODE	⊕	TREE			
EXISTING	LEGEND-PLAN	PROPOSED	EXISTING	LEGEND-PLAN	PROPOSED	EXISTING
	LEGEND-PROFILE			LEGEND-PROFILE		

LOCATION APPROVED UNDERGROUND STRUCTURES

SUPV. U/G STRUCTURES COMMITTEE DATE

NOTE: LOCATION OF UNDERGROUND STRUCTURES AS SHOWN ARE BASED ON THE BEST INFORMATION AVAILABLE BUT NO GUARANTEE IS GIVEN THAT ALL EXISTING UTILITIES ARE SHOWN OR THAT THE GIVEN LOCATIONS ARE EXACT. CONFIRMATION OF EXISTENCE AND EXACT LOCATION OF ALL SERVICES MUST BE OBTAINED FROM THE INDIVIDUAL UTILITIES BEFORE PROCEEDING WITH CONSTRUCTION.

B.M. ELEV. FIELD BOOK #

POSTED TO LBS

NO. REVISIONS DATE BY

CITY OF WINNIPEG WATER AND WASTE ENGINEERING DIVISION

ENGINEER'S SEAL

DESIGNED BY SC CHECKED BY TW

DRAWN BY CJH APPROVED BY KZ

HOR. SCALE 1:250 VERTICAL 1:50

RELEASED FOR CONSTRUCTION

DATE 2005 06 09

ORIGINAL SIGNED BY K.R. ZUREK 05/06/09

THE CITY OF WINNIPEG WATER AND WASTE DEPARTMENT

2005 WATERMAIN RENEWALS

LANGSIDE STREET CORNISH AVENUE TO 112.5 N OF N R. CORNISH AVENUE

SHEET 9 OF 16 CITY DRAWING NUMBER D-8730

BID OPPORTUNITY: 244-2005 FILENAME: D-8730_31_32_35.dwg PLOT DATE: 2005 06 09