

PLAN

**NOTES:**

1. PATHWAY LAYOUT TO BE REVIEWED ON SITE AND APPROVED BY CONTRACT ADMINISTRATOR PRIOR TO CONSTRUCTION.
2. INSTALL TEMPORARY SILT FENCE AT WEST END OF EXISTING DITCH TO RIVER FOR DURATION OF CONSTRUCTION.
3. SITE GRADING LIMITED TO IMMEDIATE ROADWAY AND DITCHING RIGHT OF WAY. MINIMAL REGRADING ON REMAINDER OF SITE.
4. FINAL GRADES OF IMMEDIATE ROAD RIGHT OF WAY, DITCHES AND OTHER AREAS AFFECTED BY CONSTRUCTION TO BE 100mm BELOW FINISHED GRADE FOR TOPSOIL AND SODDING BY OTHERS.
5. CONTRACTOR RESPONSIBLE TO RESTORE ANY AREAS OF SITE ALTERED OR DAMAGED BY CONSTRUCTION ACTIVITIES TO THE SAME OR BETTER CONDITION THEN THAT PRIOR TO CONSTRUCTION.



150 mm W.M.	WATERMAIN	150 mm W.M.	HYDRO	150 mm W.M.	WATERMAIN	150 mm W.M.
⊕	HYDRANT	⊕	M.T.S.	⊕	HYDRANT	⊕
⊗	VALVE	⊗	CONCRETE	⊗	VALVE	⊗
300 mm L.D.S.	LAND DRAINAGE SEWER	300 mm L.D.S.	ASPHALT	300 mm L.D.S.	LAND DRAINAGE SEWER	300 mm L.D.S.
250 mm W.W.S.	WASTE WATER SEWER	250 mm W.W.S.	PROPERTY LINE	250 mm W.W.S.	WASTE WATER SEWER	250 mm W.W.S.
○	MANHOLE	●	SURVEY BAR	⊕	PROPERTY LINE	⊕
□	CATCH BASIN	■	SERVICE VALVE	⊕	SURVEY BAR	⊕
▽	CURB INLET	▽	I.P.S.	⊕	SERVICE VALVE	⊕
+	JUNCTIONS	+	BUILDING	⊕	I.P.S.	⊕
—	CULVERT	—	DRAINAGE DITCH	⊕	BUILDING	⊕
—	GAS	—		⊕	DRAINAGE DITCH	⊕
EXISTING	LEGEND-PLAN	PROPOSED	EXISTING	LEGEND-PLAN	PROPOSED	EXISTING
				LEGEND-PROFILE		PROPOSED

UNDERGROUND STRUCTURES  
N/A

SUPPLY U/G STRUCTURES COMMITTEE DATE

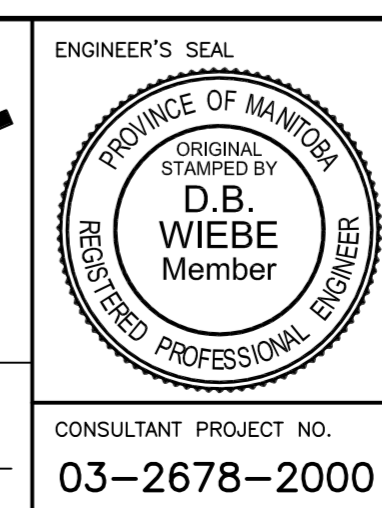
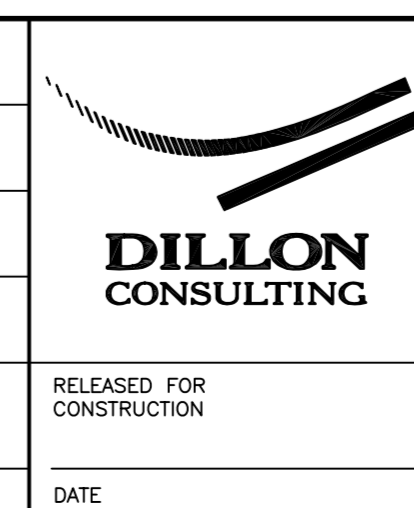
NOTE:  
LOCATION OF UNDERGROUND STRUCTURES AS SHOWN ARE BASED ON THE BEST INFORMATION AVAILABLE. BUT NO GUARANTEE IS GIVEN THAT ALL EXISTING UTILITIES ARE SHOWN OR THAT THE GIVEN LOCATIONS ARE EXACT. CONFIRMATION OF EXISTENCE AND EXACT LOCATION OF ALL SERVICES MUST BE OBTAINED FROM THE INDIVIDUAL UTILITIES BEFORE PROCEEDING WITH CONSTRUCTION.

B.M. OF TRACEY CRES.  
ELEV. 232.735m

DESIGNED BY	D. WIEBE
DRAWN BY	S. BOTTING
CHECKED BY	
APPROVED BY	
HOR. SCALE	1 : 1000
VERTICAL	
NO.	REVISIONS
DATE	BY
DATE	APRIL 1, 2005

RELEASED FOR CONSTRUCTION

DATE



**THE CITY OF WINNIPEG**  
PLANNING, PROPERTY AND DEVELOPMENT

**ST. VITAL CEMETERY SITE EXPANSION**

SITE PLAN AND PROPOSED WORKS

CITY DRAWING NUMBER  
SHEET 1 OF 3  
BID OPPORTUNITY 250-2005

CONSULTANT PROJECT NO.  
03-2678-2000