

PLAN

150 mm W.M.	WATERMAIN	150 mm W.M.	HYDRO	150 mm W.M.	WATERMAIN	150 mm W.M.
⊕	HYDRANT	⊕	M.T.S.	+	HYDRANT	+
⊗	VALVE	⊗	CONCRETE	⊗	VALVE	⊗
300 mm L.D.S.	LAND DRAINAGE SEWER	300 mm L.D.S.	ASPHALT	300 mm L.D.S.	LAND DRAINAGE SEWER	300 mm L.D.S.
250 mm W.W.S.	WASTE WATER SEWER	250 mm W.W.S.	PROPERTY LINE	250 mm W.W.S.	WASTE WATER SEWER	250 mm W.W.S.
○	MANHOLE	●	SURVEY BAR	⊕	PROFILE	⊕
□	CATCH BASIN	■	SERVICE VALVE	⊕	NORTH/WEST GUTTER	⊕
▽	CURB INLET	▽	I.P.S.	⊕	SOUTH/EAST GUTTER	⊕
+	JUNCTIONS	+	BUILDING	+		
—	CULVERT	—	DRAINAGE DITCH	—		
—	GAS	—		—		
EXISTING	LEGEND-PLAN	PROPOSED	EXISTING	LEGEND-PLAN	PROPOSED	EXISTING

UNDERGROUND STRUCTURES
N/A

SUPV. U/G STRUCTURES COMMITTEE DATE

NOTE:
LOCATION OF UNDERGROUND STRUCTURES AS SHOWN ARE BASED ON THE BEST INFORMATION AVAILABLE. BUT NO GUARANTEE IS GIVEN THAT ALL EXISTING UTILITIES ARE SHOWN OR THAT THE GIVEN LOCATIONS ARE EXACT. CONFIRMATION OF EXISTENCE AND EXACT LOCATION OF ALL UTILITIES MUST BE OBTAINED FROM THE INDIVIDUAL UTILITIES BEFORE PROCEEDING WITH CONSTRUCTION.

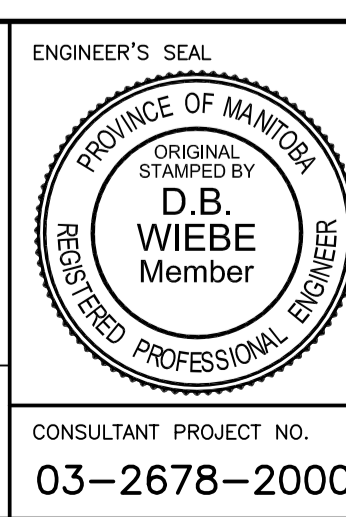
84R714 - S. SIDE ST. MICHAEL RD. E. OF W. LEG
B.M. OF TRACEY CRES.
ELEV. 232.735m

DESIGNED BY D. WIEBE
DRAWN BY S. BOTTING
CHECKED BY
APPROVED BY
HOR. SCALE 1 : 500
VERTICAL

NO. REVISIONS DATE BY DATE APRIL 1, 2005

RELEASED FOR CONSTRUCTION

DATE



THE CITY OF WINNIPEG
PLANNING, PROPERTY AND DEVELOPMENT

Winnipeg

ST. VITAL CEMETERY SITE EXPANSION

ROAD LAYOUT AND DRAINAGE

CONSULTANT PROJECT NO. 03-2678-2000

CITY DRAWING NUMBER

SHEET 2 OF 3

BID OPPORTUNITY 250-2005