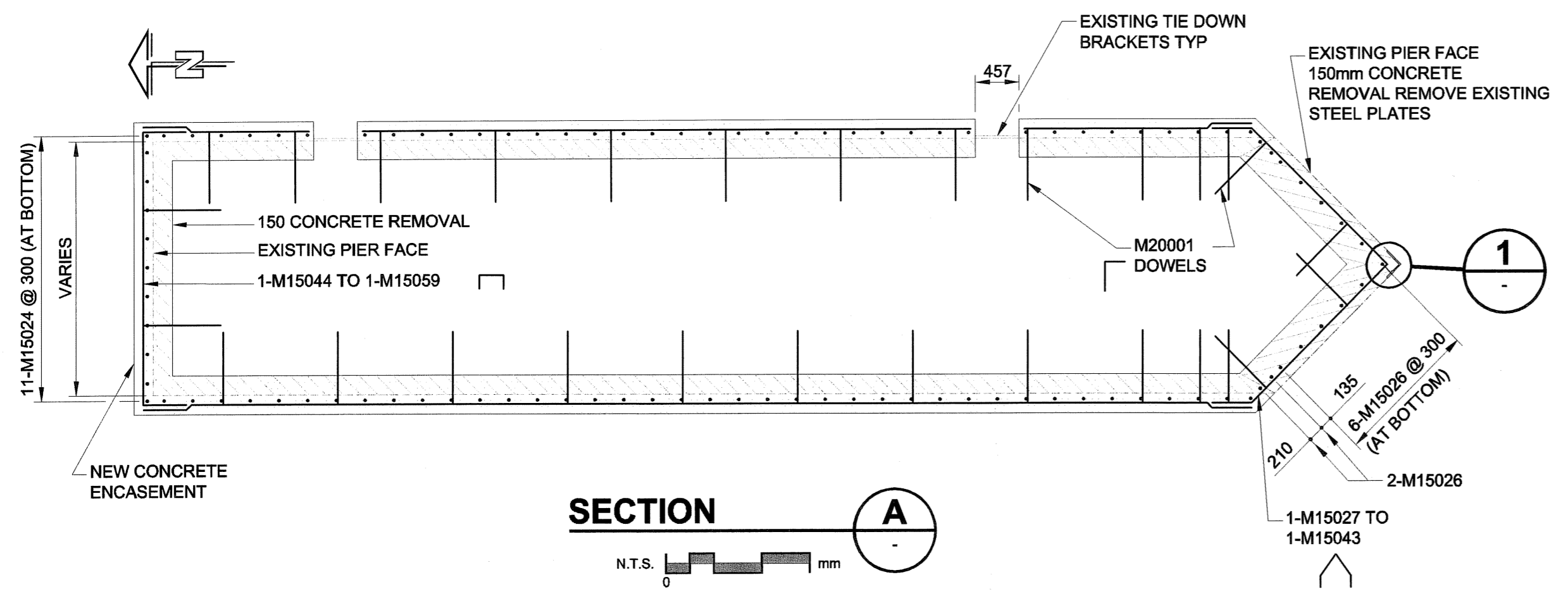
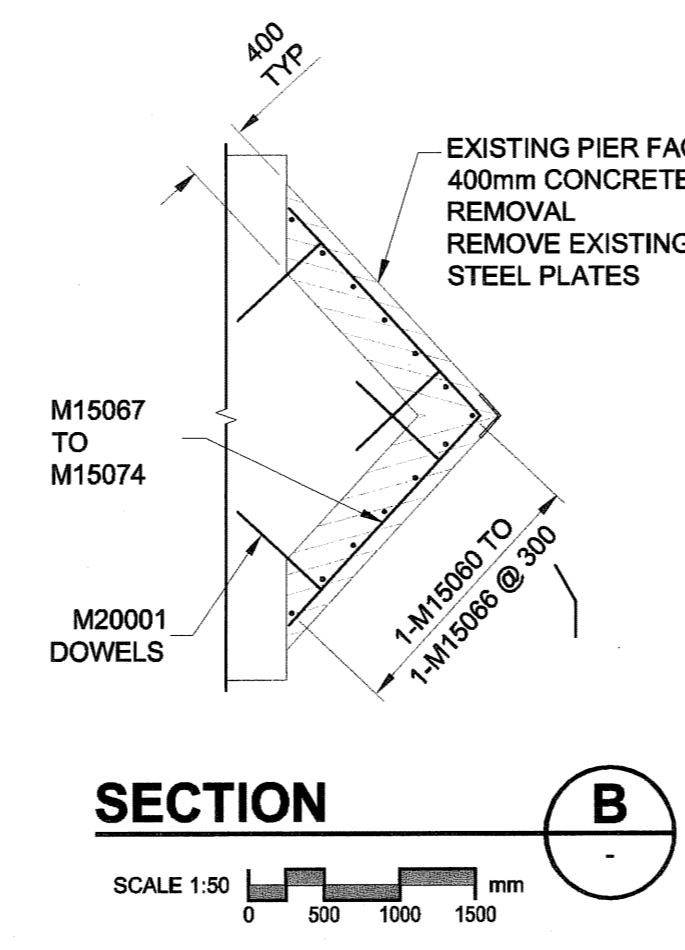


D SIZE 22" x 34" (559mm x 864mm)



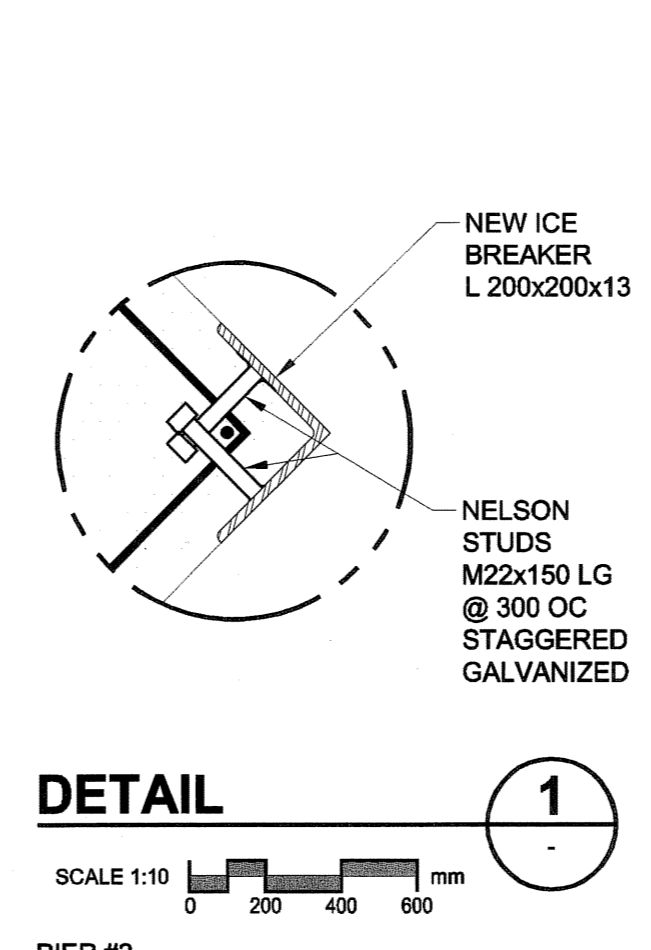
SECTION A
N.T.S. mm

PIER #2
PROPOSED CONCRETE REMOVAL, ENCASEMENT & REINFORCING DETAILS



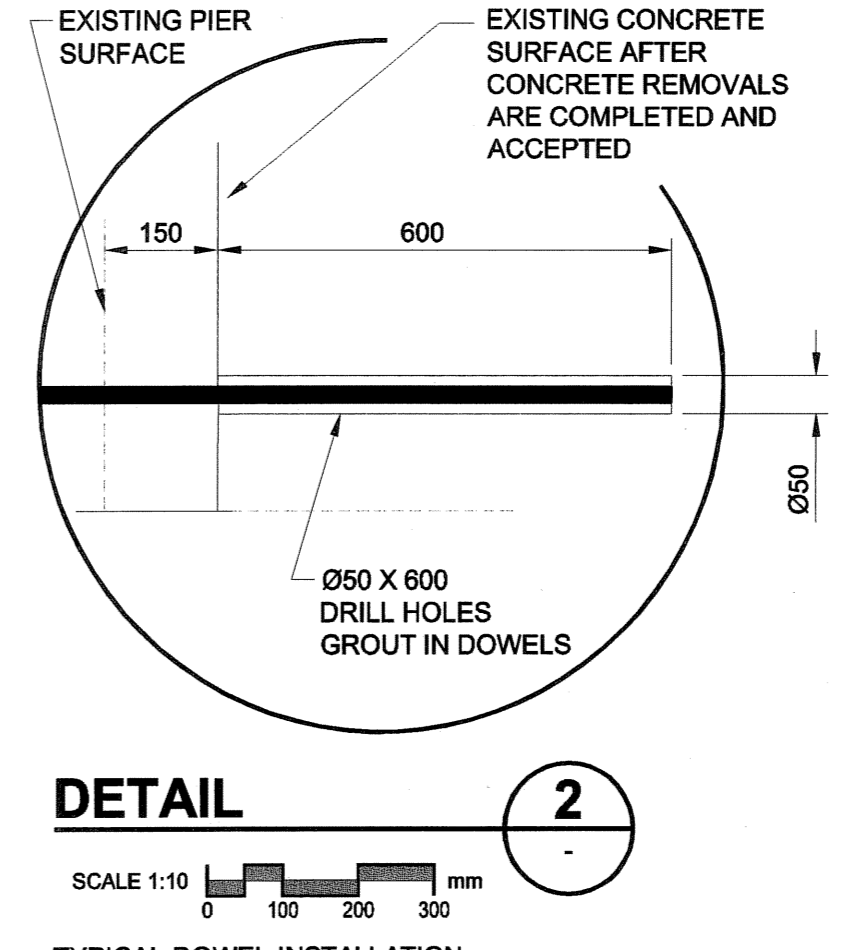
SECTION B
SCALE 1:50 mm

PIER #2 - LOWER SOUTH SIDE
PROPOSED CONCRETE REMOVAL,
ENCASEMENT & REINFORCING DETAILS



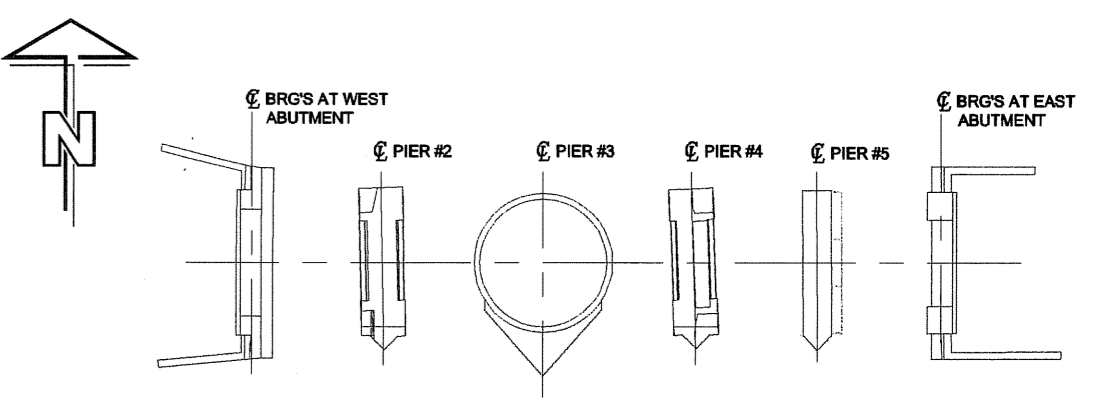
DETAIL 1
SCALE 1:10 mm

PIER #2
NEW ICE BREAKER

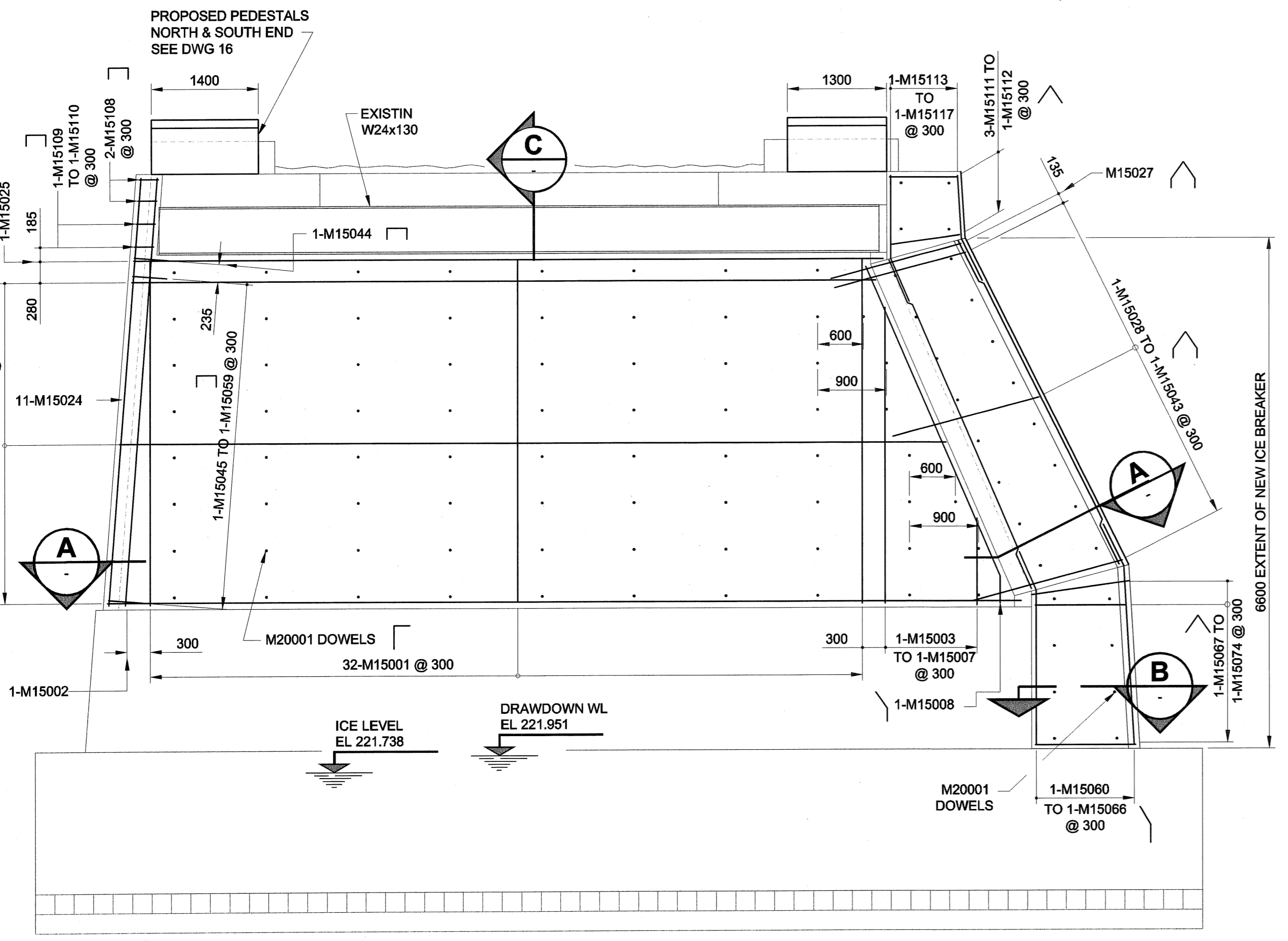


DETAIL 2
SCALE 1:10 mm

TYPICAL DOWEL INSTALLATION

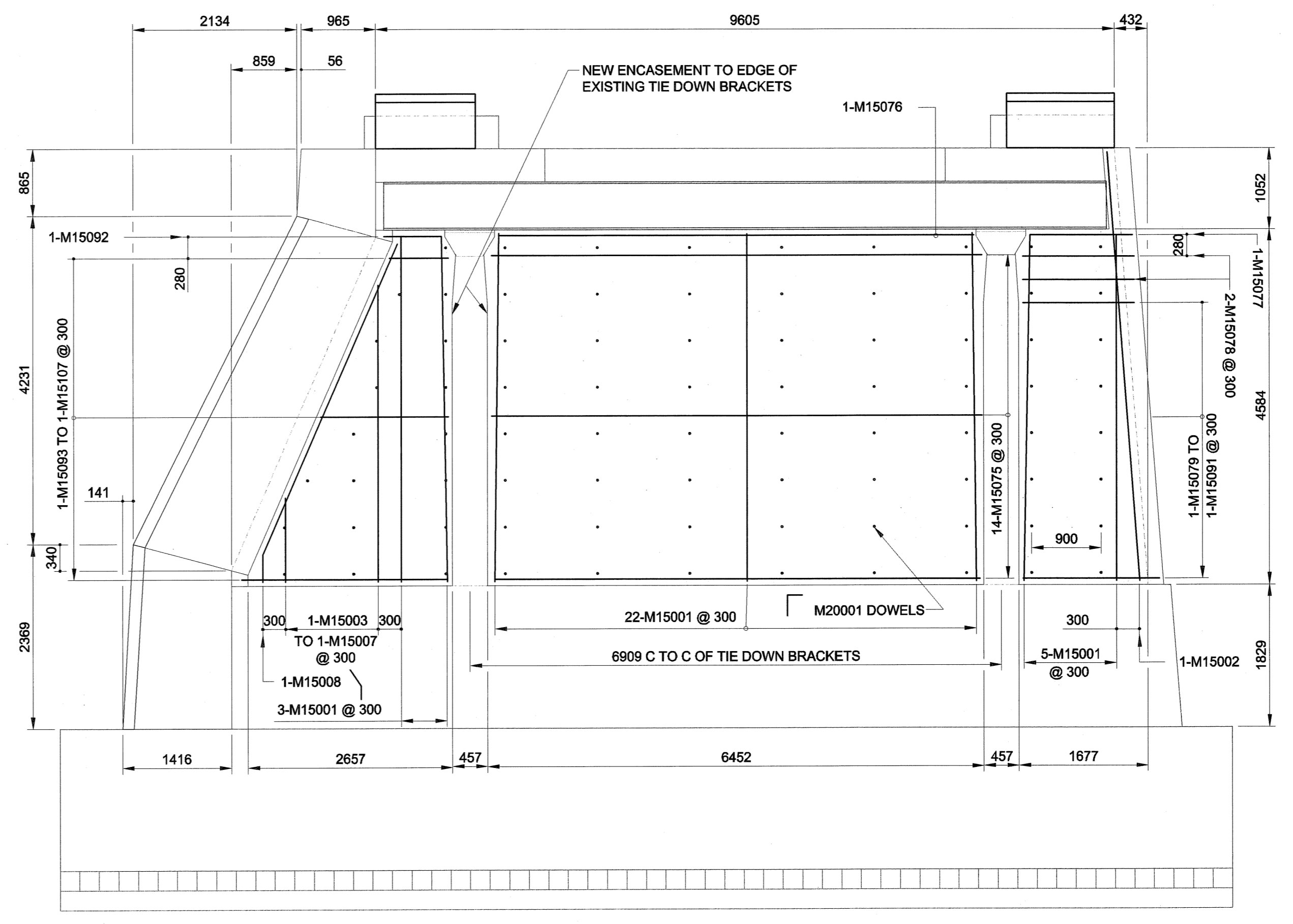


KEY PLAN
SCALE 1:500 mm
SUBSTRUCTURE - ABUTMENTS & PIERS



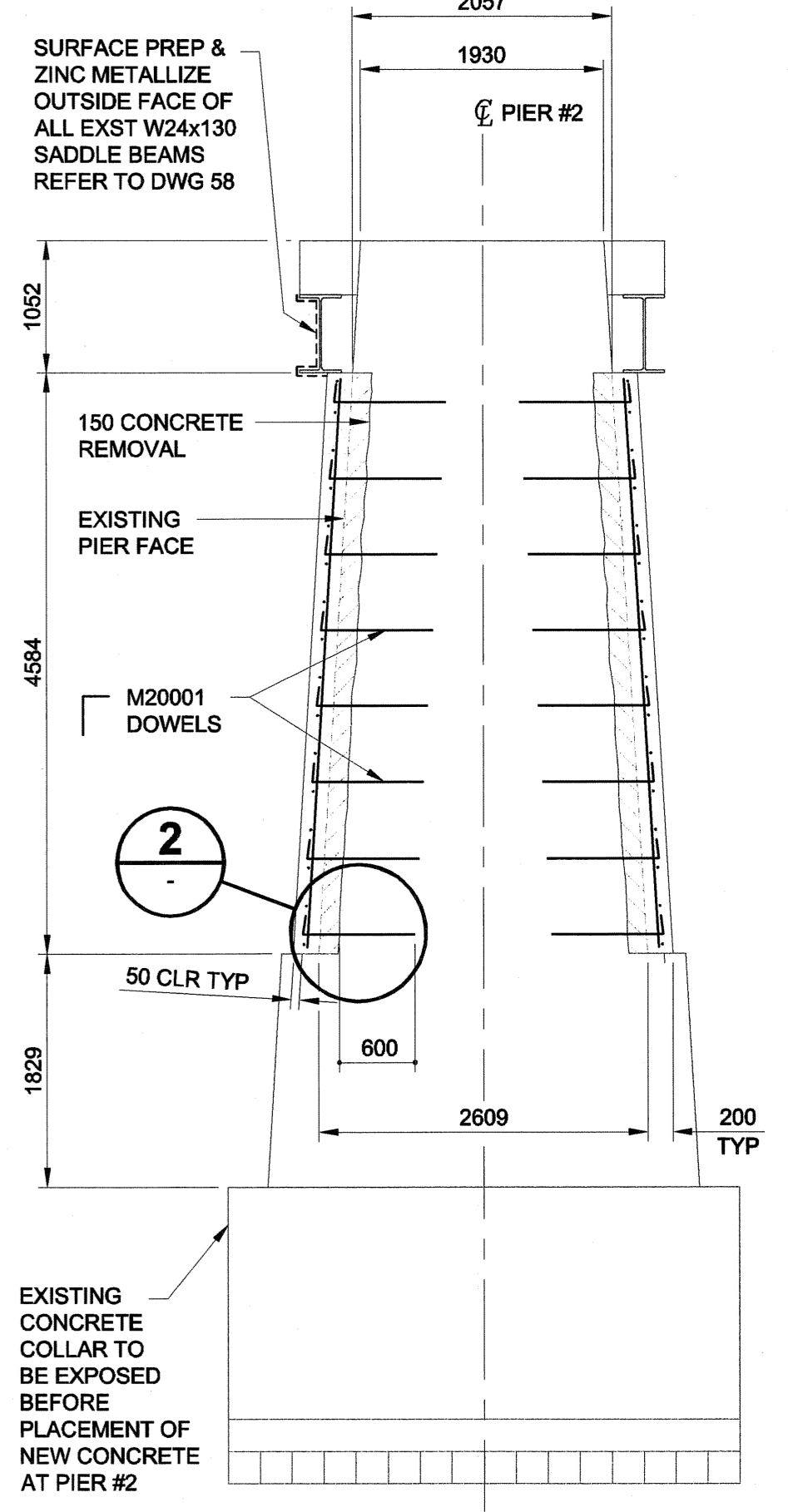
PIER #2 WEST ELEVATION

SCALE 1:50 mm
PROPOSED CONCRETE REMOVAL, ENCASEMENT & REINFORCING STEEL DETAILS



PIER #2 EAST ELEVATION

SCALE 1:50 mm
PROPOSED CONCRETE REMOVAL, ENCASEMENT & REINFORCING STEEL DETAILS
DETAILS THE SAME AS WEST SIDE NOT SHOWN FOR CLARITY.



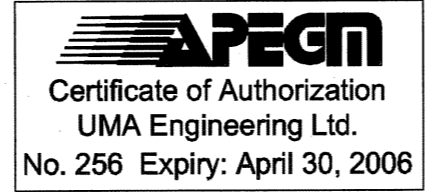
SECTION C
SCALE 1:50 mm

PIERS #4 & #5
PROPOSED CONCRETE ENCASEMENT

NOTES:
1. REFER TO "GENERAL NOTES" ON DRAWING 17.

NOTE:
ALL DIMENSIONS SHOWN ON THE DRAWINGS ARE BASED ON AVAILABLE INFORMATION AND RECORD DRAWINGS. THE CONTRACTOR SHALL FIELD MEASURE AND VERIFY ALL DIMENSIONS PRIOR TO COMMENCING CONSTRUCTION OR PRIOR TO PREPARATION OF SHOP DRAWINGS. THE CONTRACTOR SHALL MAKE THE APPROPRIATE ADJUSTMENTS TO THE APPLICABLE DETAILS AND DIMENSIONS ACCEPTABLE TO THE CONTRACT ADMINISTRATOR. THE CONTRACTOR SHALL THEN FABRICATE AND CONSTRUCT THE WORKS IN ACCORDANCE WITH THE CORRECTED DIMENSIONS.

METRIC
WHOLE NUMBERS INDICATE MILLIMETRES
DECIMALIZED NUMBERS INDICATE METRES



UMA Engineering Ltd. • Consulting • Engineering • Construction • Management Services		ENGINEER'S SEAL PROVINCE OF MANITOBA B.L. LAU REGISTERED PROFESSIONAL ENGINEER July 6, 2007	
DESIGNED BY: BLL	CHECKED BY: SBB	CONSULTANT DRAWING NO. 15 0285-376-00	
DRAWN BY: DL	APPROVED BY: BUB	PIER #2 CONCRETE REMOVAL, ENCASEMENT AND REINFORCING STEEL DETAILS	
HOR. SCALE: AS SHOWN	VERT. SCALE: AS SHOWN	CITY DRAWING NUMBER B113-05-15	
NO. REVISIONS	DATE	SHEET 15 OF 74	
0 ISSUED FOR CONSTRUCTION 05/07/05 MP		REV 15	
		0	

THE CITY OF WINNIPEG PUBLIC WORKS DEPARTMENT

REDWOOD BRIDGE REHABILITATIVE MAINTENANCE AND RELATED WORKS

PIER #2 CONCRETE REMOVAL, ENCASEMENT AND REINFORCING STEEL DETAILS

Bid Opportunity No. 257-2005

PLOT SCALE 1:1
AutoCAD 13.06 P-10265355-03 AutoCAD/SE-1 Working Drawings/0285-3565-03 01-S-0015 PK.dwg 2003-08-20 10:17am CGC