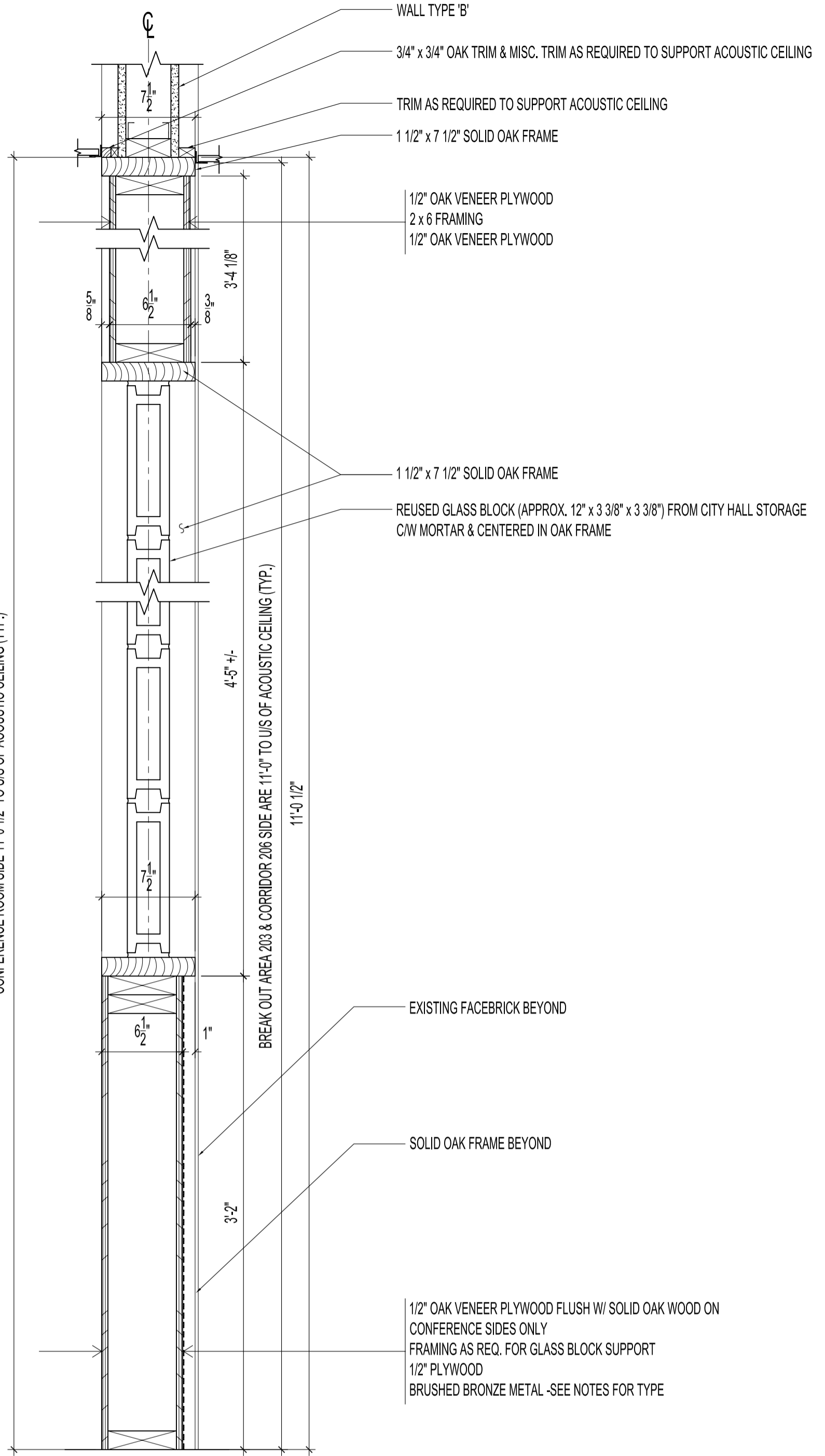
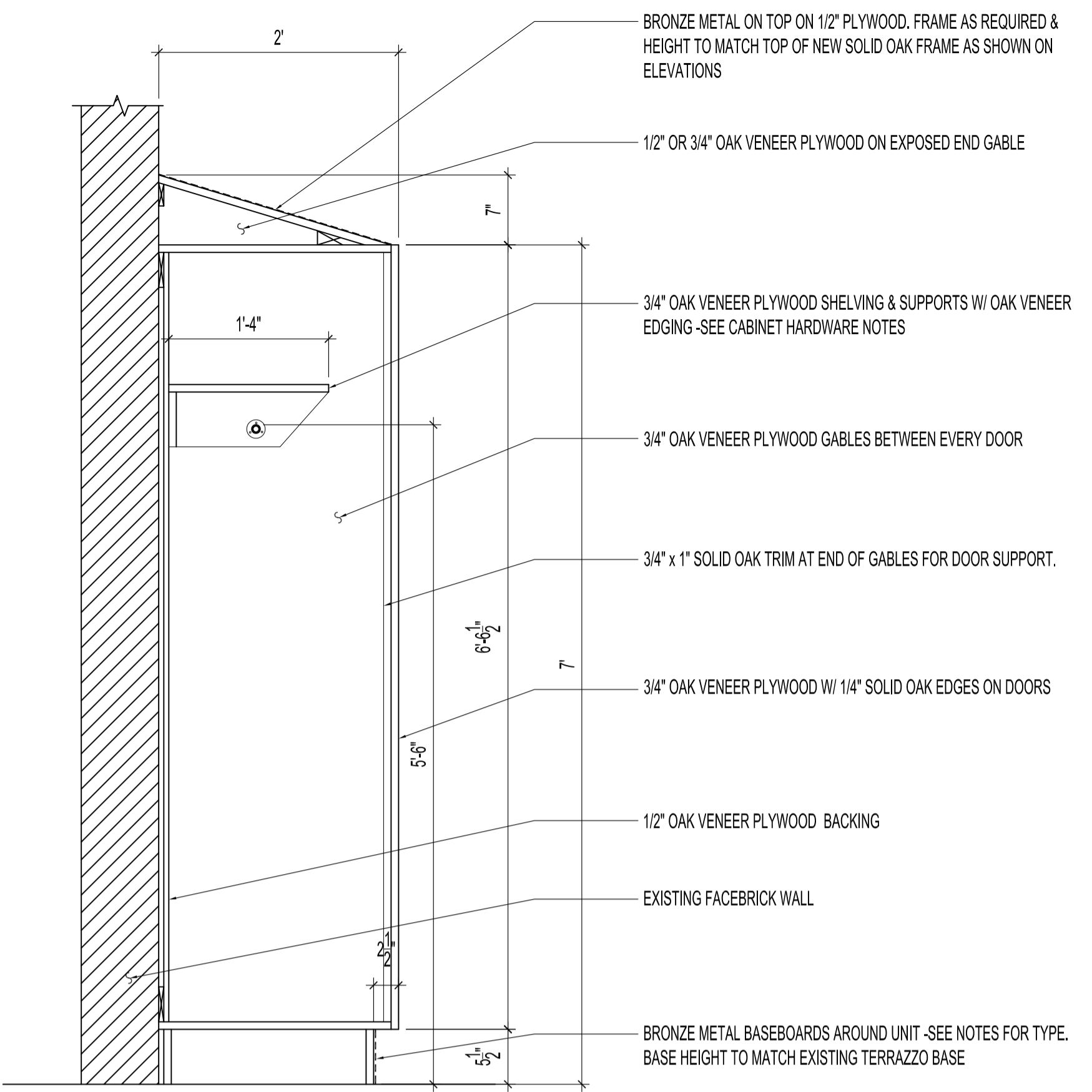


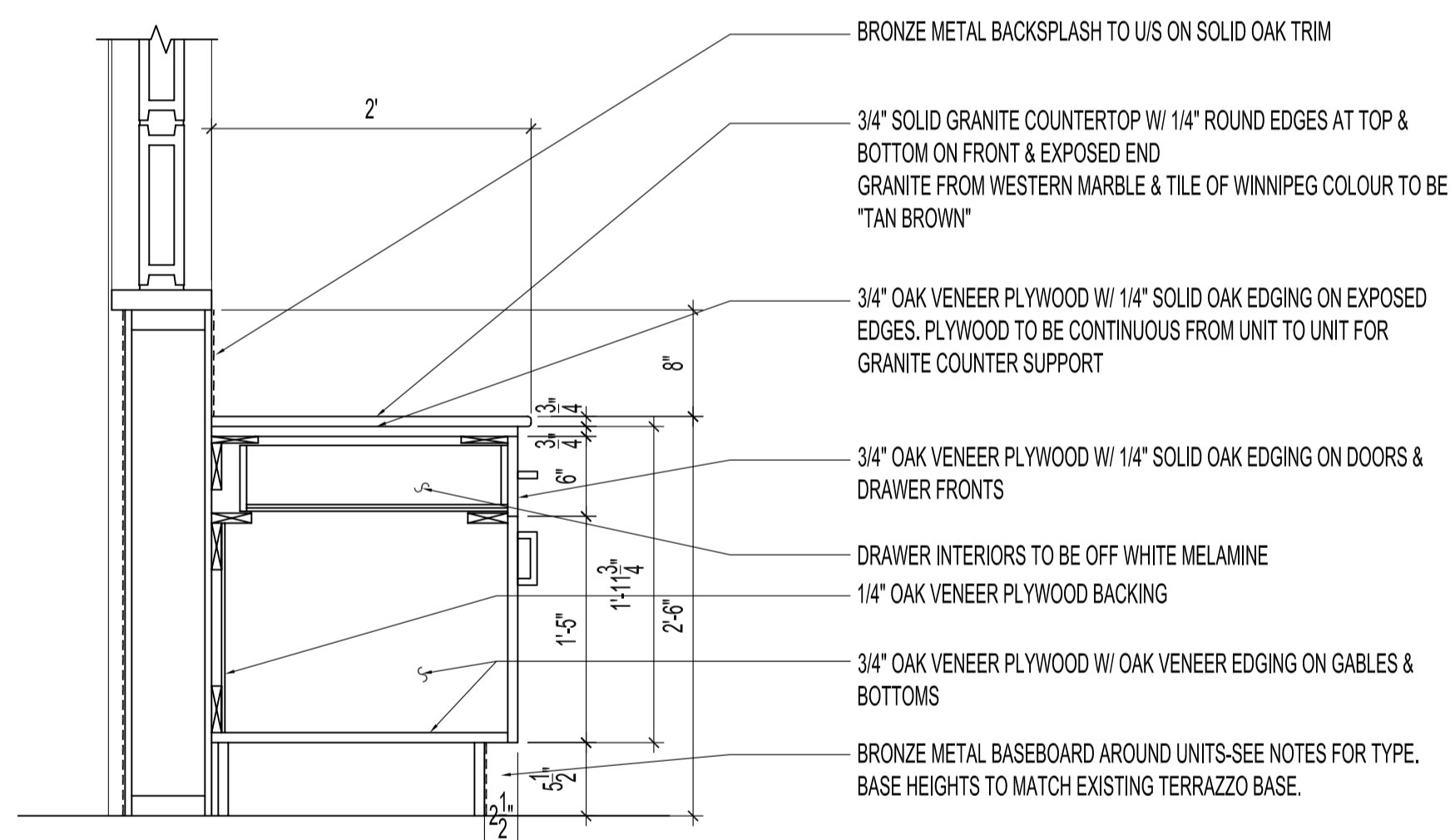
1 DETAIL -GLASS BLOCK WALL
A5 SCALE: 1 1/2" = 1'-0"



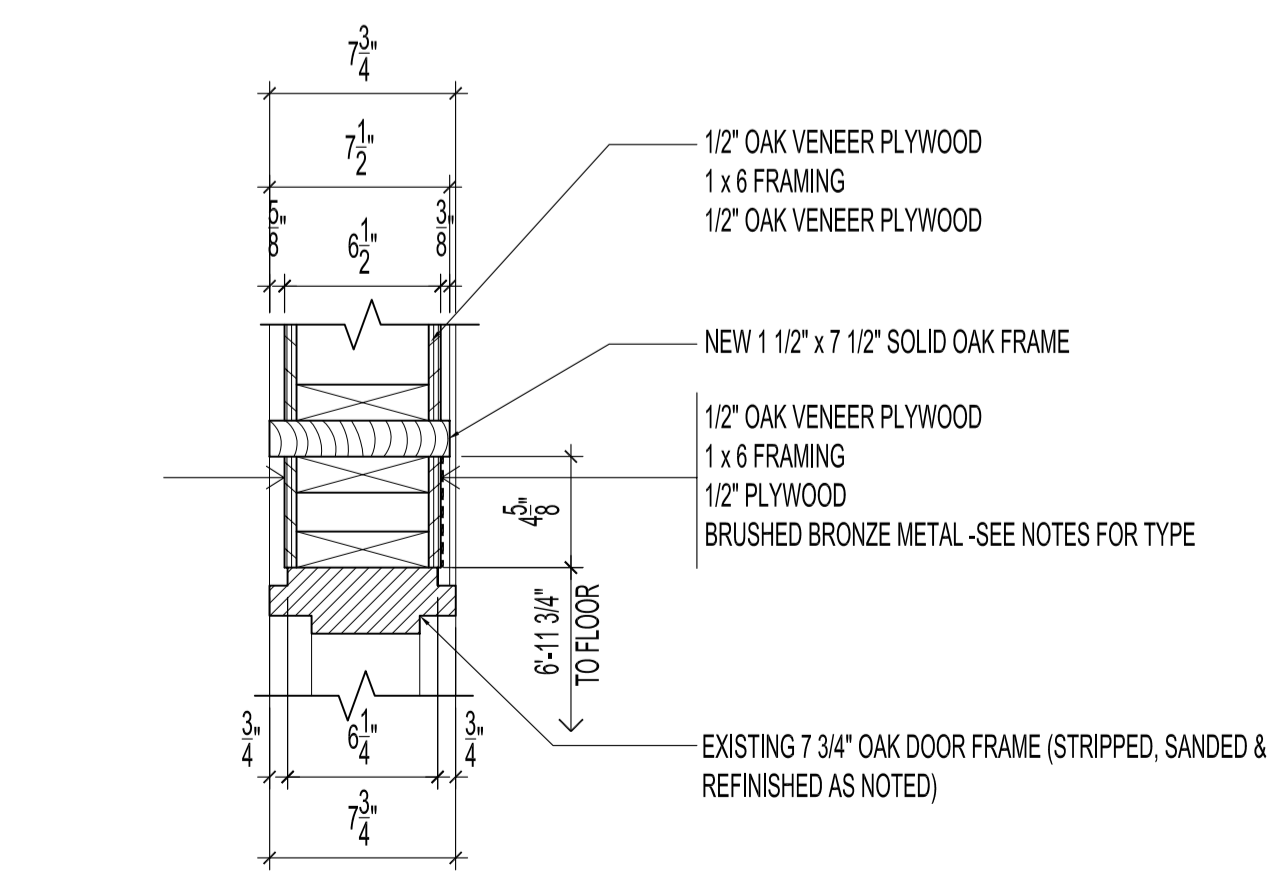
2 DETAIL -OAK WALL & GLASS BLOCK
A5 SCALE: 1 1/2" = 1'-0"



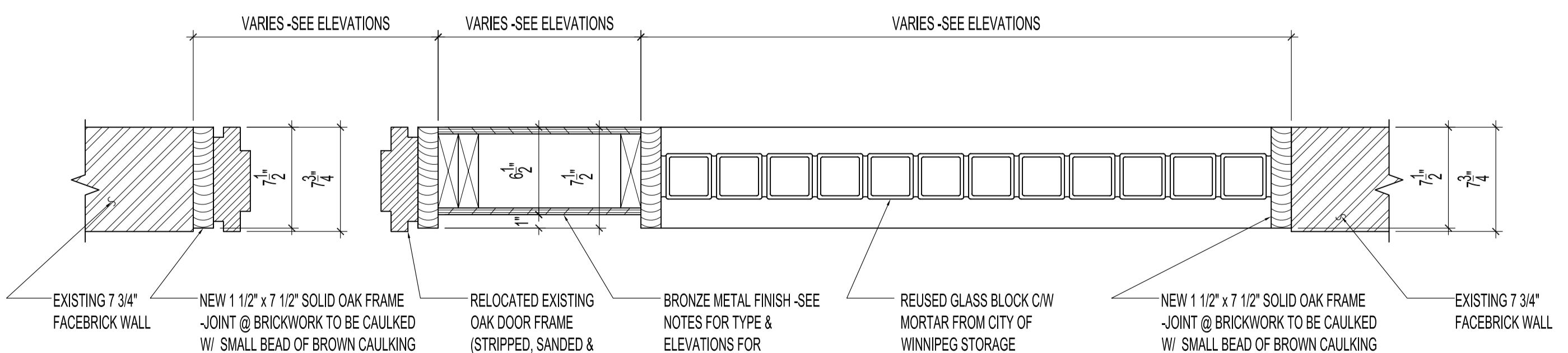
5 DETAIL -CLOSETS
A5 SCALE: 1" = 1'-0"



6 DETAIL -CABINETS
A5 SCALE: 1" = 1'-0"



3 DETAIL -DOOR HEADER & NEW FRAMING
A5 SCALE: 1 1/2" = 1'-0"



4 DETAIL -OAK WALL & GLASS BLOCK
A5 SCALE: 1 1/2" = 1'-0"

NOTES :

GENERAL NOTES & FINISHES:

GLASS BLOCK -ALL REUSED GLASS BLOCK TO BE CLEANED & PREPARED FOR NEW OPENINGS. GLASS BLOCK IS SUPPLIED BY CITY OF WINNIPEG & INSTALLED BY CONTRACTOR.

OAK FINISHES -ALL OAK INTERIORS & EXTERIORS TO HAVE 3 COATS OF MATTE POLYURETHANE FINISH. SAND & DUST W/ TACK CLOTH BETWEEN EACH COAT.

BRONZE METAL FINISH -FORMICA DECOMETAL COLLECTION #2126 "BRUSHED BRONZETONED ALUMINUM". ALL METAL BRUSHED STROKES TO RUN VERTICAL ON ALL SURFACES.

CABINET HARDWARE:

DOOR & DRAWER PULLS -HAFELE #02A09.21

DRAWER SLIDES -K&V 8400 FULL EXTENSION

COUNTER CABINET DOOR HINGES -BLUM CUP HINGES 170 DEGREE OPENING, NICKEL PLATED

CLOSET -FULL LENGTH CONCEALED PIANO HINGES. USE 3 MAGNETIC CATCHES AT ALL DOORS.

CLOSET ROD & FLANGES -K&V 764 FLANGES & ROD IN CHROME FINISH

NO.	REVISION/DESCRIPTION	BY	DATE
SEALS			

DRAWN BY	MMK	CHECKED BY	APPROVED
DATE	2005.05.24	USER APPROVAL	

CITY OF WINNIPEG
PLANNING, PROPERTY & DEVELOPMENT DEPARTMENT
CIVIC ACCOMMODATIONS DIVISION
300 - 65 GARRY ST. R3C 4K4

PROJECT
ADMINISTRATION BUILDING
SECOND FLOOR RENOVATIONS
CONFERENCE ROOM RENOVATIONS
510 MAIN STREET

SHEET TITLE
SECOND FLOOR PLAN
MILLWORK DETAILS

SCALE	PROJECT NO.	SHEET NO.
AS NOTED	2004-180	A5