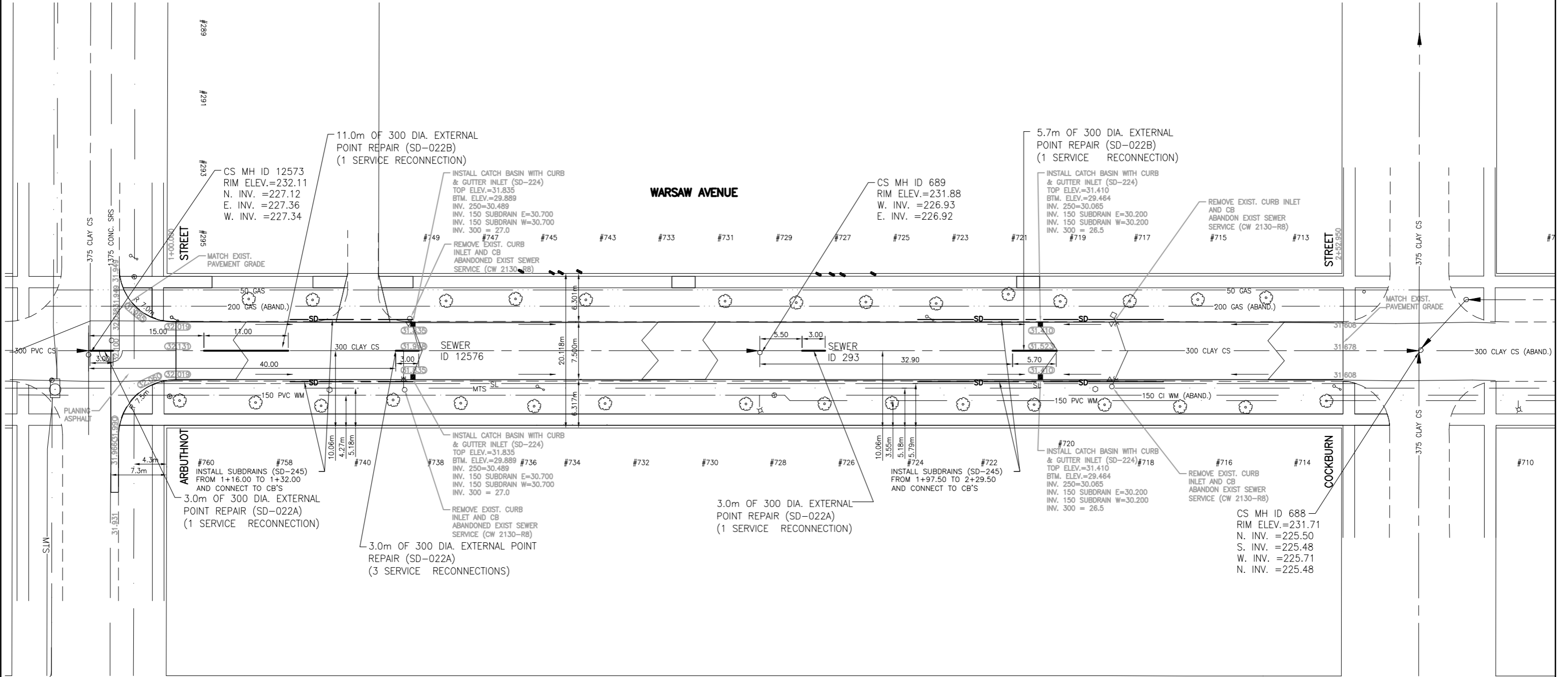


V:\1137\active\113704040 - 2005 Residential Streets - Design\ACAD\warsaw-2005.dwg
 2005-06-01 04:23PM By: tgnl



NOTES:
 1. CONTRACTOR TO VERIFY LIMITS OF SEWER REPAIRS PRIOR TO EXCAVATION BY MEANS OF VIDEO INSPECTION.
 2. CONTRACTOR TO ASSIST WITH VISUAL INSPECTION OF EXISTING SERVICES TO DETERMINE IF SERVICE RENEWAL IS REQUIRED.

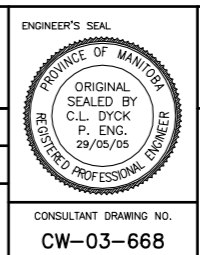


METRIC
 WHOLE NUMBERS INDICATE MILLIMETRES
 DECIMALIZED NUMBERS INDICATE METRES

Bench Mark S.W. cor. Cockburn St. & Fleet Ave. .
 Tblt. in N. Conc. foundation of Earl Grey School,
 4m E. & 0.3m below brick N.W. Cor. of school

B.M. 52-025 ELEV. 232.478m			
NO.	REVISIONS	DATE	BY

Stantec Consulting Ltd. 905 Waverley Street, Winnipeg, Manitoba Tel 204-489-5900 Fax 204-453-9012	
DESIGNED BY C.L.D.	CHECKED BY C.L.D.
DRAWN BY H.P.	APPROVED BY C.L.D.
HOR. SCALE 1:500	RELEASED FOR CONSTRUCTION ORIGINAL SIGNED BY KEN TURKO DATE JUNE 02/05
VERTICAL	
DATE April 2005	



THE CITY OF WINNIPEG
WATER AND WASTE DEPARTMENT
ENGINEERING DIVISION

2005 RESIDENTIAL STREETS RENEWAL PROGRAM
 COMBINED SEWER EXTERNAL POINT REPAIRS

WARSAW AVENUE
 EXTERNAL POINT REPAIRS

SHEET 3 OF 3
 CAD FILE DRAWING NUMBER
 warsaw-2005.dwg
 CITY DRAWING NUMBER
05268

CONSULTANT DRAWING NO.
CW-03-668