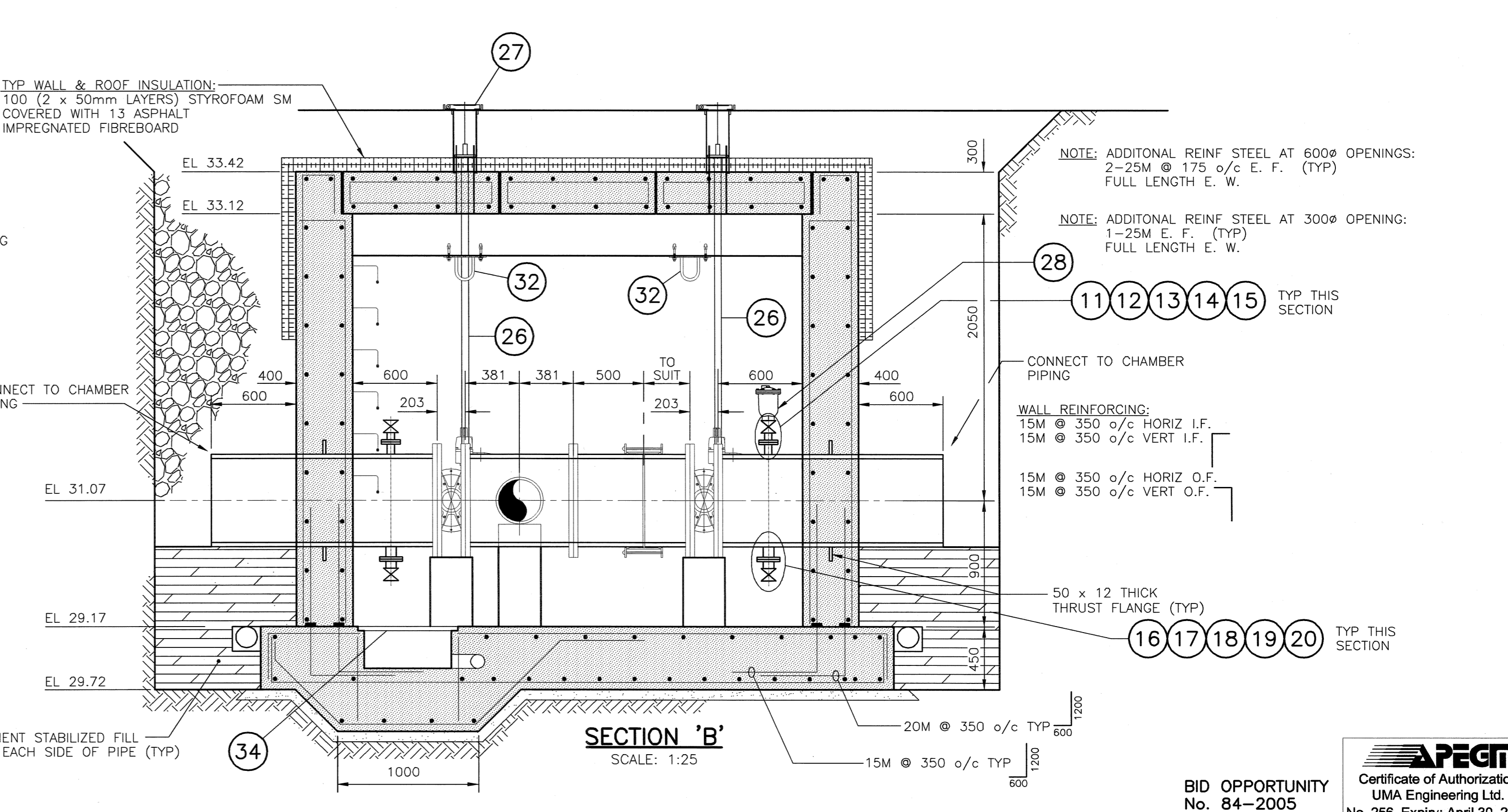
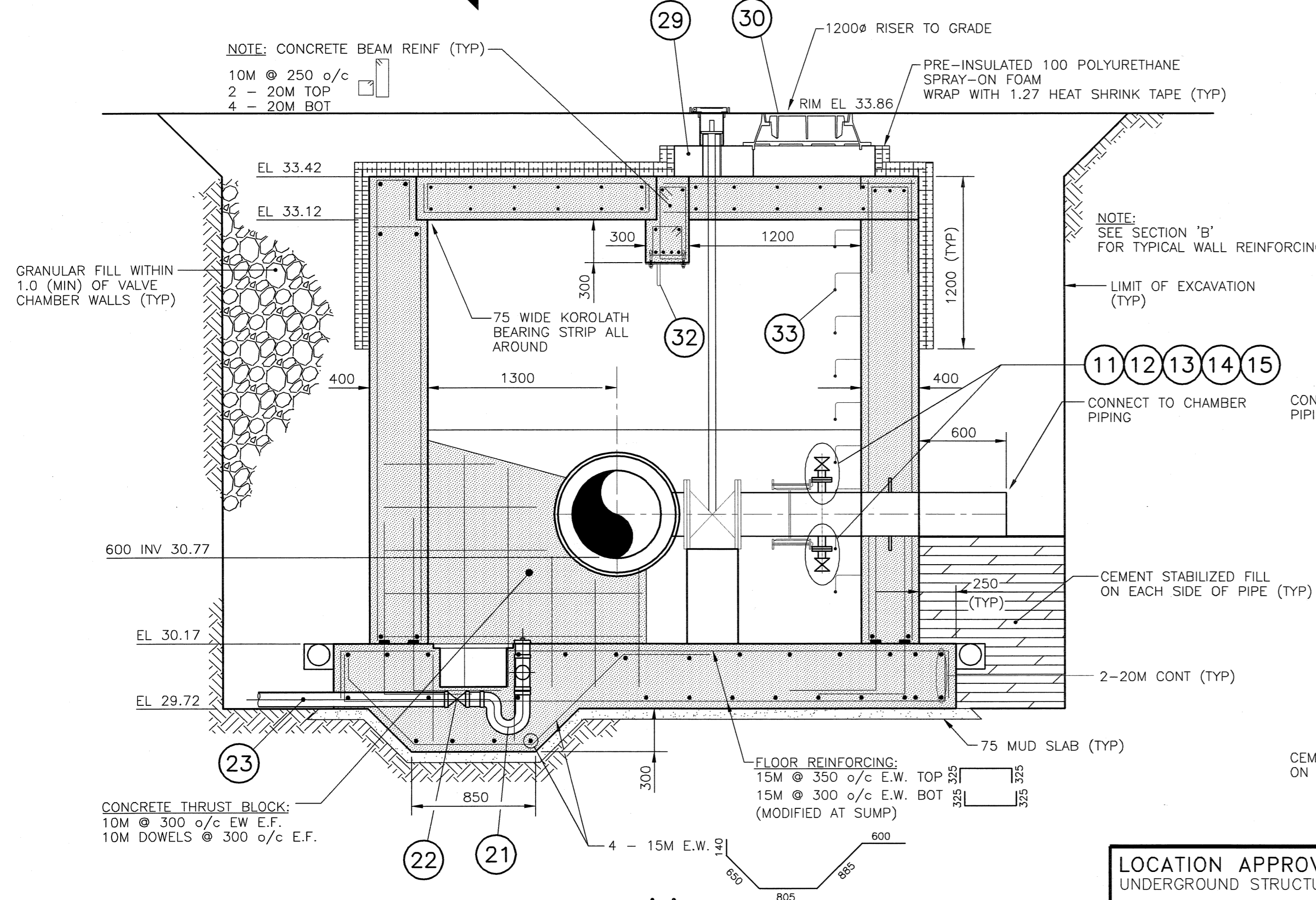


ITEM	DESCRIPTION	QUANTITY	LENGTH
1	600x600x300 TEE Fig\Fig\Fig	1	782 x 483
2	600 mm AWWA C504 BUTTERFLY VALVE Fig\Fig C/W MANUAL ACTUATOR	2	203
3	300 mm AWWA C509 GATE VALVE Fig\Fig	1	355
4	600 WALL PIECE F x PE C/W THRUST FLANGE & 50 NPT OUTLET (TOP) AND 75 NPT OUTLET (BOTTOM)	2	1600
5	600 SPOOL PIECE F x PE	1	500
6	600 SPOOL PIECE F x PE	1	TO SUIT
7	600 AWWA C219 STEEL SLEEVE COUPLER	1	
8	300 SPOOL PIECE F x PE	1	TO SUIT
9	300 AWWA C219 STEEL SLEEVE COUPLER	1	
10	300 WALL PIECE F x PE C/W THRUST FLANGE & 50 NPT OUTLET (TOP AND BOTTOM)	1	1500
11	50 SCHEDULE 80 STEEL NIPPLE (THREADED)	4	125
12	50 STEEL FLANGE CL 125 (THREADED) C/W ISOLATION KIT	4	
13	50 CAST BRONZE OR BRASS FLANGE (THREADED)	4	
14	50 CAST BRONZE OR BRASS NIPPLE (THREADED)	4	125
15	50 BRONZE GATE VALVE (THREADED)	4	
16	75 SCHEDULE 80 STEEL NIPPLE (THREADED)	2	125
17	75 STEEL FLANGE CL 125 (THREADED) C/W ISOLATION KIT	2	
18	75 CAST BRONZE OR BRASS FLANGE (THREADED)	2	
19	75 CAST BRONZE OR BRASS NIPPLE (THREADED)	2	125
20	75 BRONZE GATE VALVE (THREADED)	2	
21	100 PVC DWV P' TRAP AND DRAIN C/W TEE & 250X 100 PVC DRAIN	-	1
22	100 BACKWATER VALVE	-	1
23	100 DRAIN	-	1
24	150 PVC SUBDRAIN (SD-245)	-	1
25	150 DOUBLE 'Y' C/W 150 x 100 REDUCER	-	1
26	50 VALVE STEM EXTENSION	3	TO SUIT
27	STD CITY OF WINNIPEG VALVE BOX C/W PVC RISER	3	TO SUIT
28	AIR RELEASE VALVE C/W 50 INLET PORT	1	-
29	1200X 750 PRECAST MH FLATTOP REDUCER	1	-
30	STD CITY OF WINNIPEG MANHOLE FRAME AND SOLID COVER (AP-004, AP-005)	1	-
31	REMOVABLE SLAB LIFTING LUG	12	-
32	UBOLT LIFTING HOOKS	3	-
33	STANDARD CITY OF WINNIPEG DRIVE IN ALUMINUM STEPS	14	-
34	FRP SLUMP PIT COVER	-	-

NOTES
CHAMBER FITTINGS TO BE AWWA C110 DI OR STEEL
CHAMBER PIPING TO BE AWWA C151 CLASS 54, AWWA C200 STEEL OR AWWA C301 PCCP



LOCATION APPROVED UNDERGROUND STRUCTURES

SUPV. U/G STRUCTURES COMMITTEE	DATE

NOTE:
LOCATION OF UNDERGROUND STRUCTURES AS SHOWN ARE BASED ON THE BEST INFORMATION AVAILABLE BUT NO GUARANTEE IS GIVEN THAT ALL EXISTING UTILITIES ARE SHOWN OR THAT THE GIVEN LOCATIONS ARE EXACT. CONFIRMATION OF EXISTENCE AND EXACT LOCATION OF ALL SERVICES MUST BE OBTAINED FROM THE INDIVIDUAL UTILITIES BEFORE PROCEEDING WITH CONSTRUCTION.

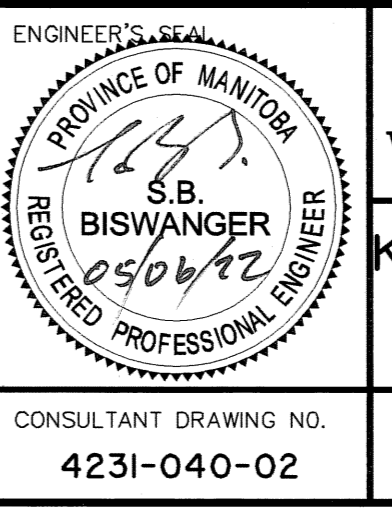
B.M. GBM67-001
ELEV. 234.148

NO.	REVISIONS	DATE	BY

UMA | AECOM

© 2005 UMA ENGINEERING LTD. ALL RIGHTS RESERVED.

DESIGNED BY: MGM	CHECKED BY: <i>[Signature]</i>
DRAWN BY: WJd	APPROVED BY: <i>[Signature]</i>
HOR. SCALE: 1:25	AUTHORIZED BY: <i>[Signature]</i> DATE: 05/06/22
VERTICAL: -	REGISTERED PROFESSIONAL ENGINEER



THE CITY OF WINNIPEG
WATER AND WASTE DEPARTMENT
Winnipeg ENGINEERING DIVISION

KENASTON UNDERPASS PROJECT
CHARLESWOOD AND WILKES
FEEDERMAIN RELOCATION

VALVE CHAMBER
SECTIONS & DETAILS

BID OPPORTUNITY
No. 84-2005

Certificate of Authorization
UMA Engineering Ltd.
No. 256 Expiry: April 30, 2006

SHEET 8 OF 9
CAD FILE DRAWING NUMBER: 01-C-0008_RX
CITY DRAWING NUMBER: D-8744