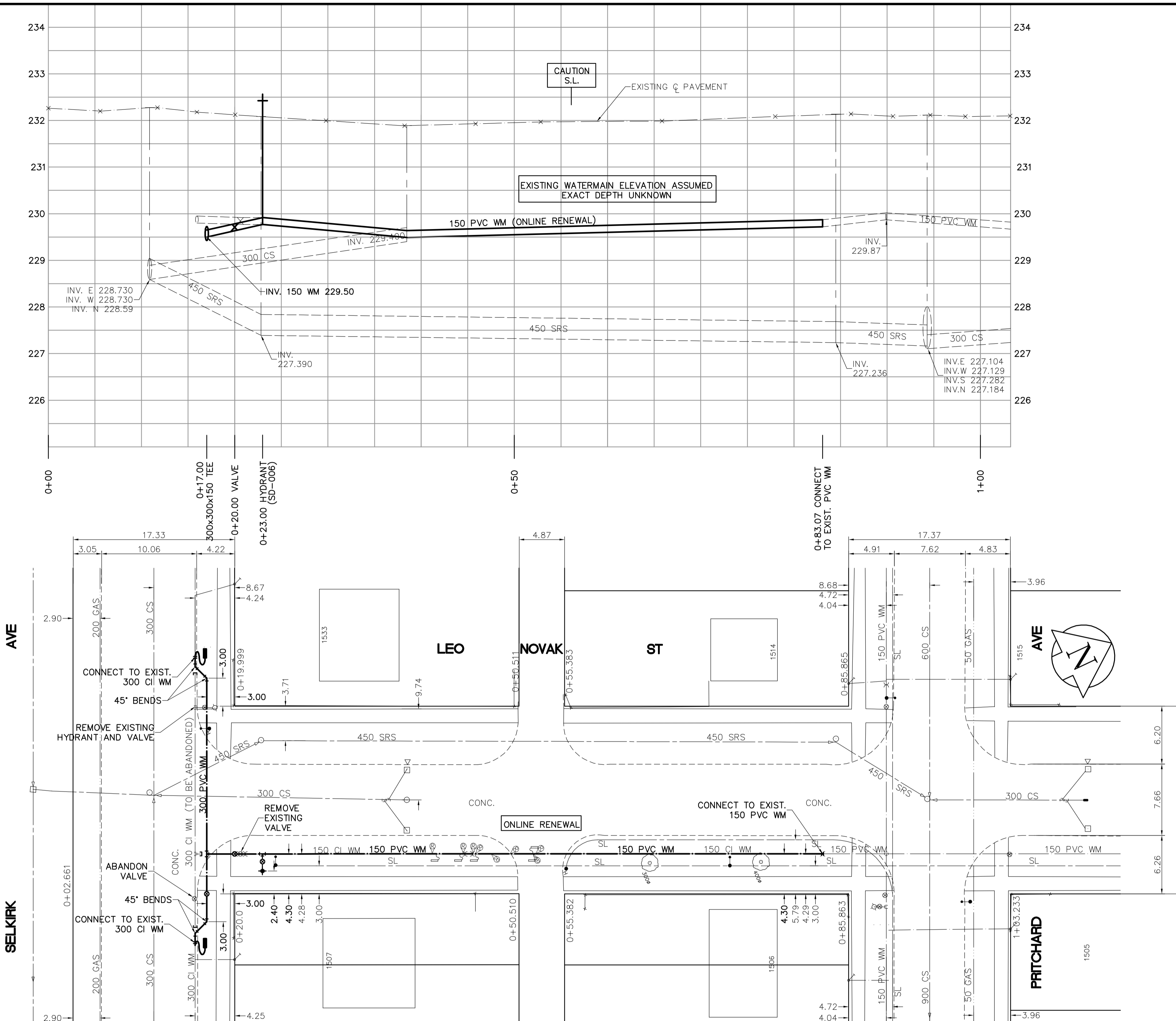


SHEET: G.W.-W.M.-A1 (11/2002)  
 FILE NAME: L:\Work\85539\85539\026-CAD\WMT\Comp\85539-C01.dwg  
 PLOTTED BY: mironi@keconite  
 LAYOUT NAME: 85539-C01  
 Jan 16, 2005 - 8:42am



- CONSTRUCTION NOTES**
1. EXPOSE WATERMAIN CONNECTIONS AND CONFIRM INVERTS PRIOR TO CONSTRUCTION.
  2. INSTALL WATERMAIN BY TRENCHLESS METHODS.
  3. ALL MATERIALS SHALL CONFORM TO THE CITY OF WINNIPEG STANDARD CONSTRUCTION SPECIFICATIONS.
  4. MINIMUM COVER TO TOP OF PROPOSED WATERMAIN SHALL BE 2.5m FROM STREET CENTERLINE.
  5. INSTALL ALL HYDRANTS WITH FLANGE ELEVATION 50mm- 150mm ABOVE FINISHED GRADE.
  6. REPLACE ALL EXISTING LEAD SERVICES FROM THE PROPOSED WATERMAIN TO PROPERTY LINE.
  7. NOTIFY ALL AFFECTED RESIDENTS AND BUSINESSES 24 HOURS IN ADVANCE OF ANY WATER SHUTDOWN OR DISRUPTION OF SERVICE.
  8. LOCATION OF PREVIOUS WATERMAIN BREAKS SHOWN THUS IS APPROXIMATE AND FOR INFORMATION ONLY. NO GUARANTEE IS GIVEN TO THE COMPLETENESS OR ACCURACY OF THIS INFORMATION.
  9. LOCATION OF WATER SERVICES SHOWN ON DRAWINGS ARE APPROXIMATE. THE CONTRACTOR SHALL FIELD LOCATE ALL WATER SERVICES PRIOR TO CONSTRUCTION.
  10. ALL VALVES SHALL BE RED TOP (COUNTER CLOCKWISE TO CLOSE).
  11. BACKFILL UNDER OR WITHIN 1.0m OF PAVEMENTS, INCLUDING SIDEWALKS SHALL BE CLASS 3 BACKFILL EXCEPT AS NOTED. BACKFILL IN BOULEVARDS SHALL BE CLASS 5 BACKFILL.
  12. RENEW ALL LEAD SERVICES TO PROPERTY LINE.

**Certificate of Authorization**  
 Earth Tech Canada Inc.  
 No. 730    Expiry: April 30, 2006  
 METRIC  
 WHOLE NUMBERS INDICATE MILLIMETRES  
 DECIMALIZED NUMBERS INDICATE METRES  
 0    10m    20m  
 SCALE

ADDRESS	NATURE OF SERVICE	DISTANCE SC TO PROPERTY	SIZE	MATERIAL	POSITION OF SC (curb stop)	POSITION OF CC (corp)	COMMENTS:
1533 SELKIRK AV	RESIDENTIAL	0.3 m	19 mm	COPPER	Long: 12.5 m/W of WL Short: 1.5 m/E of WL	LEO NOVAK Long: 1.2 m/E of	
1507 SELKIRK AV	RESIDENTIAL	0.2 m	19 mm	COPPER	Long: 7.8 m/E of EL Short: 4.7 m/E of WL	LEO NOVAK Long: OPP of/S/C	
1515 PRITCHARD AV	RESIDENTIAL	1.4 m	19 mm	COPPER	Long: 3.0 m/W of WL Short: 0.8 m/W of EL	LEO NOVAK Long: OPP of/S/C	
1514 PRITCHARD AV	RESIDENTIAL	0.5 m	19 mm	LEAD	Long: 2.7 m/W of WL Short: 0.3 m/W of EL	LEO NOVAK Long: 0.3 m/W of/S/C	CPLG 2 OUT FROM MAIN
1508 PRITCHARD AV	RESIDENTIAL	0.5 m	19 mm	LEAD	Long: 9.4 m/E of EL Short: 1.8 m/W of EL	LEO NOVAK Long: OPP of/S/C	MAIN RENEWAL JULY 23/05
1505 PRITCHARD AV	RESIDENTIAL	0.6 m	19 mm	COPPER	Long: 4.1 m/E of EL Short: 1.7 m/E of WL	LEO NOVAK Long: OPP of/S/C	

EXISTING	LEGEND - PLAN	PROPOSED	EXISTING	LEGEND - PROFILE	PROPOSED
	WATERMAIN			WATERMAIN	
	HYDRANT			HYDRANT	
	VALVE			VALVE	
	LAND DRAINAGE SEWER			LAND DRAINAGE SEWER	
	WASTEWATER SEWER			WASTEWATER SEWER	
	MANHOLE			MANHOLE	
	CATCH BASIN			CATCH BASIN	
	CURB INLET			CURB INLET	
	JUNCTIONS			JUNCTIONS	
	CULVERT			CULVERT	
	GAS			GAS	
	LEGEND - PLAN			LEGEND - PROFILE	
	LEGEND - PROFILE			LEGEND - PROFILE	

**LOCATION APPROVED UNDERGROUND STRUCTURES**

SUPV. U/G STRUCTURES DATE COMMITTEE

**NOTE:**  
 LOCATION OF UNDERGROUND STRUCTURES AS SHOWN ARE BASED ON THE BEST INFORMATION AVAILABLE. BUT NO GUARANTEE IS GIVEN THAT ALL EXISTING UTILITIES ARE SHOWN OR THAT THE GIVEN LOCATIONS ARE EXACT. CONFIRMATION OF EXISTENCE AND EXACT LOCATION OF ALL SERVICES MUST BE OBTAINED FROM THE INDIVIDUAL UTILITIES BEFORE PROCEEDING WITH CONSTRUCTION.

B.M. 24-010 N.E. Cor. SELKIRK Ave. and BULLER ST. Tablet in 7.6 m Core. Pile. 3.3 m N. of N.L. SELKIRK Ave. & 3.8 m W. of E.L. of BULLER ST.

NO.	REVISIONS	DATE	BY
0	ISSUED FOR TENDER	05/06/16	GSK
A	ISSUED FOR REVIEW	05/06/13	GSK

**EARTH TECH**  
 A tyco INTERNATIONAL LTD. COMPANY  
 Earth Tech (Canada) Inc. Winnipeg, Manitoba 204-477-5381

DESIGNED BY: GSK    CHECKED BY: KWF  
 DRAWN BY: MAF    APPROVED BY: [Signature]  
 HOR. SCALE: 1:250    RELEASED FOR CONSTRUCTION BY: K. ZUREK  
 VERTICAL SCALE: 1:50    DATE: 05/06/16

ENGINEER'S SEAL  
 ORIGINAL SIGNED BY: K.W. FITCHETT  
 JUNE 16/05  
 CONSULTANT DRAWING NO. 85539-C01

**THE CITY OF WINNIPEG**  
 Winnipeg WATER AND WASTE DEPARTMENT

**2005 WATERMAIN RENEWALS CONTRACT 10**

LEO NOVAK STREET SELKIRK AVENUE TO PRITCHARD AVENUE

SHEET OF 16  
 CITY DRAWING NUMBER D-8764