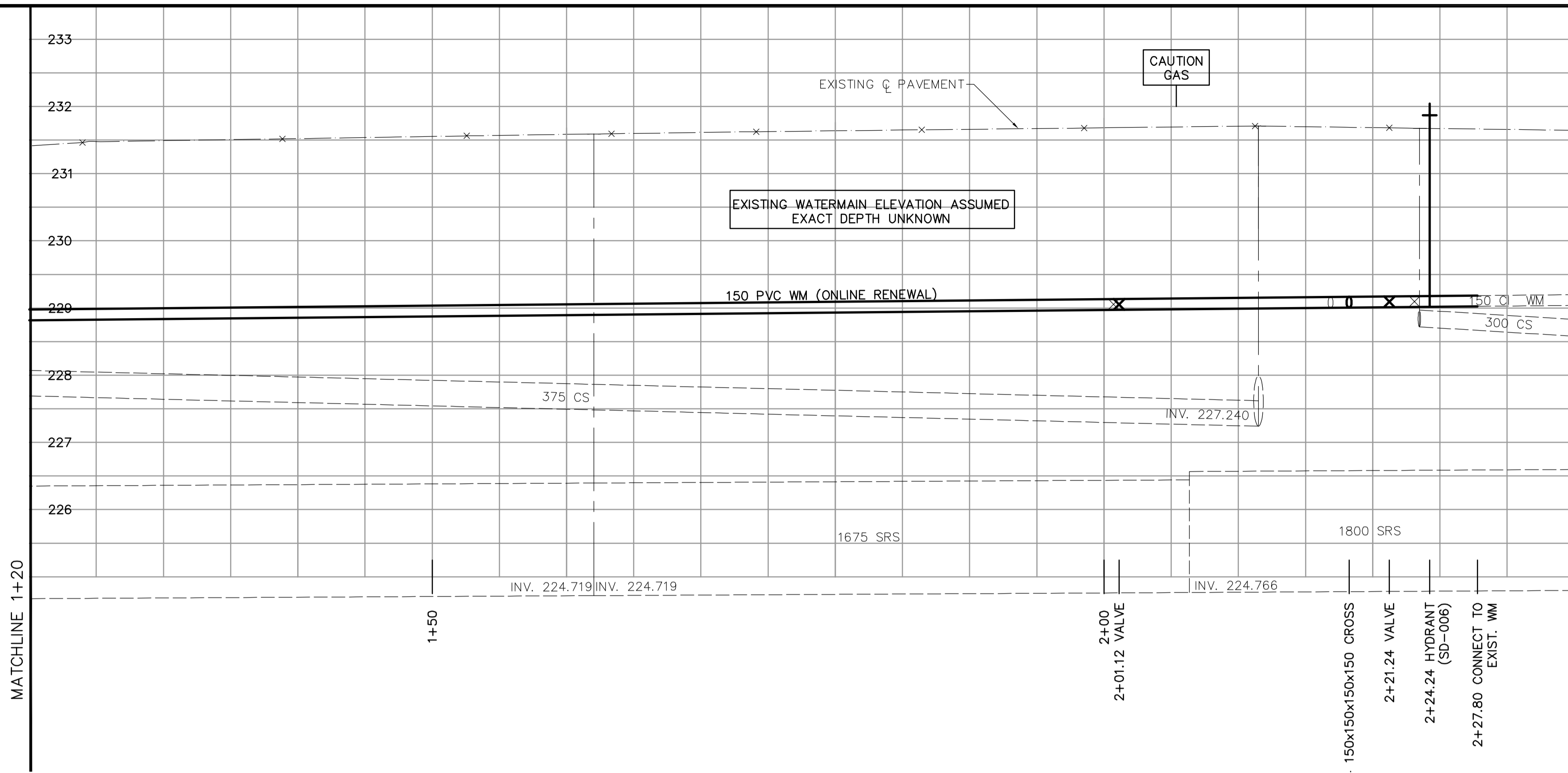
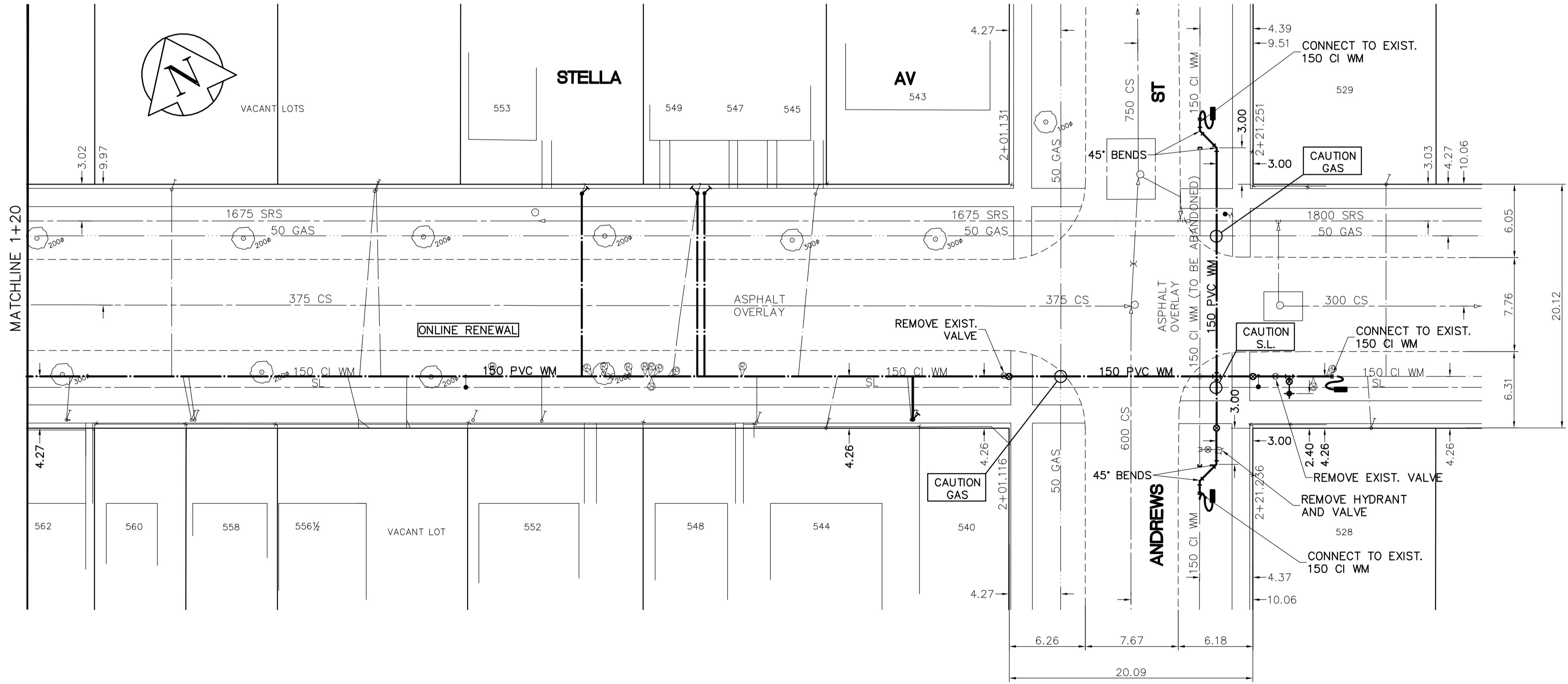


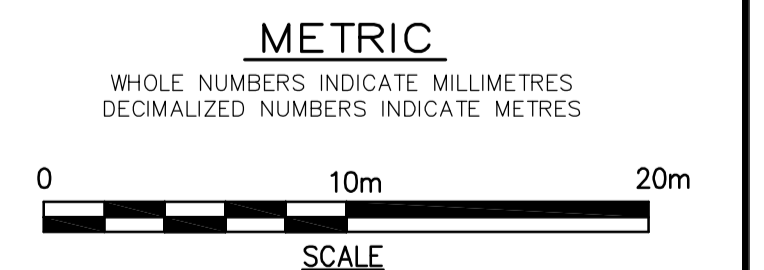
SHEET: COW-WM-A1 (11/2002) FILE NAME: L:\work\85539\026-CAD\WWT\COMP\85539-C04.dwg PLOTTED BY: mroberts DATE: 2005-05-12 LAYOUT NAME: 85539-C04



ADDRESS	NATURE OF SERVICE	DISTANCE SC TO PROPERTY	SIZE	MATERIAL	POSITION OF SC (curb stop)	POSITION OF CC (corp)	COMMENTS
562 STELLA AV	RESIDENTIAL	0.3 m	19 mm	COPPER	Long: 2.6 m/W of EPL Short: 2.7 m/E of EL	HOUSE	Branch Serv 564
560 STELLA AV	RESIDENTIAL	0.5 m	19 mm	COPPER	Long: 67.4 m/W of WL Short: 2.7 m/E of EL	HOUSE	FORMLY DBL 556 STELLA
559 STELLA AV	RESIDENTIAL	0.3 m	16 mm	LEAD	Long: 54.8 m/W of WL Short: OPP/W of L	HOUSE	WATER C/O @ MAIN CC 172WVWV ANDREWS
558 STELLA AV	RESIDENTIAL	0.5 m	19 mm	COPPER	Long: 67.4 m/W of WL Short: OPP/W of L	HOUSE	FORMLY DBL 560 STELL FIRE OFF
557 STELLA AV	RESIDENTIAL	0.3 m	13 mm	LEAD	Long: 52.7 m/W of WL Short: 1.8 m/E of WL	HOUSE	
556 STELLA AV	NOT IN USE	0.3 m	16 mm	LEAD	Long: 52.7 m/W of WL Short: 0.3 m/W of WL	HOUSE	DBL SERV 556 1/2
556 1/2 STELLA AV	RESIDENTIAL	0.3 m	19 mm	COPPER	Long: 53.6 m/W of WL Short: 0.9 m/W of EL	HOUSE	BRANCH WITH 556 1/2
554 STELLA AV	RESIDENTIAL	0.5 m	19 mm	COPPER	Long: 52.7 m/W of WL Short: 0.6 m/E of EL	HOUSE	BRANCH WITH 556
554 1/2 STELLA AV	RESIDENTIAL	0.5 m	19 mm	COPPER	Long: 49.7 m/W of WL Short: 3.7 m/W of EL	HOUSE	SERVICE UNCROSSED BRANCH SERV 554
553 STELLA AV	RESIDENTIAL	0.3 m	16 mm	LEAD	Long: 35.4 m/W of WL Short: 3.4 m/E of EL	HOUSE	RENEW TO PL
552 STELLA AV	RESIDENTIAL	0.5 m	19 mm	COPPER	Long: 39.0 m/W of WL Short: 3.2 m/W of EL	HOUSE	
549 STELLA AV	RESIDENTIAL	0.3 m	16 mm	LEAD	Long: 25.9 m/W of WL Short: 2.1 m/E of EL	HOUSE	BRANCH SERV 547 RENEW TO PL
548 STELLA AV	RESIDENTIAL	0.5 m	19 mm	COPPER	Long: 21.0 m/W of WL Short: 4.0 m/E of WL	HOUSE	
547 STELLA AV	RESIDENTIAL	0.5 m	16 mm	LEAD	Long: 16.0 m/W of WL Short: 0.2 m/E of EL	HOUSE	BRANCH SERV 548 RENEW TO PL
546 STELLA AV	RESIDENTIAL	0.6 m	19 mm	COPPER	Long: 15.1 m/W of WL Short: 4.4 m/W of EL	HOUSE	
544 STELLA AV	RESIDENTIAL	0.5 m	19 mm	COPPER	Long: 39.8 m/W of NL Short: 2.3 m/N of SL	GARAGE	ALSO SERVES 542 STELLA
543 STELLA AV	NOT IN USE	0.3 m	19 mm	COPPER	Long: 17.7 m/W of NL Short: 3.7 m/W of NL	HOUSE	
543 STELLA AV	NOT IN USE	0.3 m	16 mm	LEAD	Long: 8.2 m/W of WL Short: 1.2 m/E of EL	HOUSE	SEE 544 STELLA
541 STELLA AV	NOT IN USE	0.5 m	19 mm	COPPER	Long: 17.8 m/W of NL Short: 3.8 m/W of EL	HOUSE	TRIPLE SERVICE, 3 SGL SC TEES 1/2" FROM SC
540 STELLA AV	RESIDENTIAL	0.3 m	19 mm	LEAD	Long: 0.6 m/W of WL Short: 0.6 m/W of NL	HOUSE	RENEW TO PL
539 STELLA AV	RESIDENTIAL	0.5 m	19 mm	COPPER	Long: 11.0 m/W of EL Short: 2.0 m/W of EL	HOUSE	TRIPLE SERVICE, 3 SGL SC TEES 1/2" FROM SC
529 STELLA AV	RESIDENTIAL	0.5 m	19 mm	COPPER	Long: 9.8 m/W of EL Short: 0.9 m/E of WL	HOUSE	
528 STELLA AV	RESIDENTIAL	0.3 m	19 mm	COPPER	Long: 0.3 m/W of WL Short: 0.3 m/W of EL	HOUSE	
526 STELLA AV	RESIDENTIAL	0.5 m	19 mm	COPPER	Long: 6.1 m/E of EL Short: 2.1 m/E of EL	HOUSE	BRANCH WITH 526
525 STELLA AV	RESIDENTIAL	0.3 m	19 mm	COPPER	Long: 0.3 m/W of WL Short: 0.3 m/W of EL	HOUSE	OCT 2000 - RENEWED SERVICE BOX
524 STELLA AV	RESIDENTIAL	0.5 m	19 mm	COPPER	Long: 37.5 m/E of EL Short: 1.2 m/E of EL	HOUSE	BRANCH WITH 526
522 STELLA AV	RESIDENTIAL	0.3 m	16 mm	LEAD	Long: 37.5 m/E of EL Short: 1.2 m/E of EL	HOUSE	



- CONSTRUCTION NOTES**
1. EXPOSE WATERMAIN CONNECTIONS AND CONFIRM INVERTS PRIOR TO CONSTRUCTION.
 2. INSTALL WATERMAIN BY TRENCHLESS METHODS.
 3. ALL MATERIALS SHALL CONFORM TO THE CITY OF WINNIPEG STANDARD CONSTRUCTION SPECIFICATIONS.
 4. MINIMUM COVER TO TOP OF PROPOSED WATERMAIN SHALL BE 2.5m FROM STREET CENTERLINE.
 5. INSTALL ALL HYDRANTS WITH FLANGE ELEVATION 50mm - 150mm ABOVE FINISHED GRADE.
 6. REPLACE ALL EXISTING LEAD SERVICES FROM THE PROPOSED WATERMAIN TO PROPERTY LINE.
 7. NOTIFY ALL AFFECTED RESIDENTS AND BUSINESSES 24 HOURS IN ADVANCE OF ANY WATER SHUTDOWN OR DISRUPTION OF SERVICE.
 8. LOCATION OF PREVIOUS WATERMAIN BREAKS SHOWN THUS IS APPROXIMATE AND FOR INFORMATION ONLY. NO GUARANTEE IS GIVEN TO THE COMPLETENESS OR ACCURACY OF THIS INFORMATION.
 9. LOCATION OF WATER SERVICES SHOWN ON DRAWINGS ARE APPROXIMATE. THE CONTRACTOR SHALL FIELD LOCATE ALL WATER SERVICES PRIOR TO CONSTRUCTION.
 10. ALL VALVES SHALL BE RED TOP (COUNTER CLOCKWISE TO CLOSE).
 11. BACKFILL UNDER OR WITHIN 1.0m OF PAVEMENTS, INCLUDING SIDEWALKS SHALL BE CLASS 3 BACKFILL EXCEPT AS NOTED. BACKFILL IN BOULEVARDS SHALL BE CLASS 5 BACKFILL.
 12. RENEW ALL LEAD SERVICES TO PROPERTY LINE.



EXISTING	LEGEND - PLAN	PROPOSED	EXISTING	LEGEND - PROFILE	PROPOSED
150 mm W.M.	WATERMAIN	150 mm W.M.	HYDRO	HYDRO	HYDRO
Hydrant symbol	HYDRANT	Valve symbol	TELEPHONE	TELEPHONE	TELEPHONE
Valve symbol	VALVE	Concrete symbol	CONCRETE	CONCRETE	CONCRETE
Asphalt symbol	ASPHALT	Property line symbol	PROPERTY LINE	PROPERTY LINE	PROPERTY LINE
Survey bar symbol	SURVEY BAR	Tree symbol	TREE	TREE	TREE
Curb stop symbol	CURB STOP	Anode symbol	ANODE	ANODE	ANODE
Concrete sidewalk symbol	CONCRETE SIDEWALK	Fence symbol	FENCE	FENCE	FENCE

LOCATION APPROVED UNDERGROUND STRUCTURES

SUPV. U/G STRUCTURES DATE COMMITTEE

NOTE:
LOCATION OF UNDERGROUND STRUCTURES AS SHOWN ARE BASED ON THE BEST INFORMATION AVAILABLE. BUT NO GUARANTEE IS GIVEN THAT ALL EXISTING UTILITIES ARE SHOWN OR THAT THE GIVEN LOCATIONS ARE EXACT. CONFIRMATION OF EXISTENCE AND EXACT LOCATION OF ALL SERVICES MUST BE OBTAINED FROM THE INDIVIDUAL UTILITIES BEFORE PROCEEDING WITH CONSTRUCTION.

NO.	REVISIONS	DATE	BY
0	ISSUED FOR TENDER	05/06/16	GSK
A	ISSUED FOR REVIEW	05/06/13	GSK

EARTH TECH
A tyco INTERNATIONAL LTD. COMPANY
Earth Tech (Canada) Inc. Winnipeg, Manitoba 204-477-5381

DESIGNED BY: GSK
CHECKED BY: KWF

DRAWN BY: MAF
APPROVED BY:

HOR. SCALE: 1:250
VERTICAL SCALE: 1:50

RELEASED FOR CONSTRUCTION BY: K. ZUREK

DATE: 2005/05/12 DATE: 05/06/16

ENGINEER'S SEAL

ORIGINAL SIGNED BY: K.W. FITCHETT
JUNE 16/05

CONSULTANT DRAWING NO. 85539-C04

THE CITY OF WINNIPEG
Winnipeg WATER AND WASTE DEPARTMENT

2005 WATERMAIN RENEWALS CONTRACT 10

SHEET 4 OF 16
CITY DRAWING NUMBER D-8767

STELLA AVENUE STATION 1+20 TO ANDREWS STREET