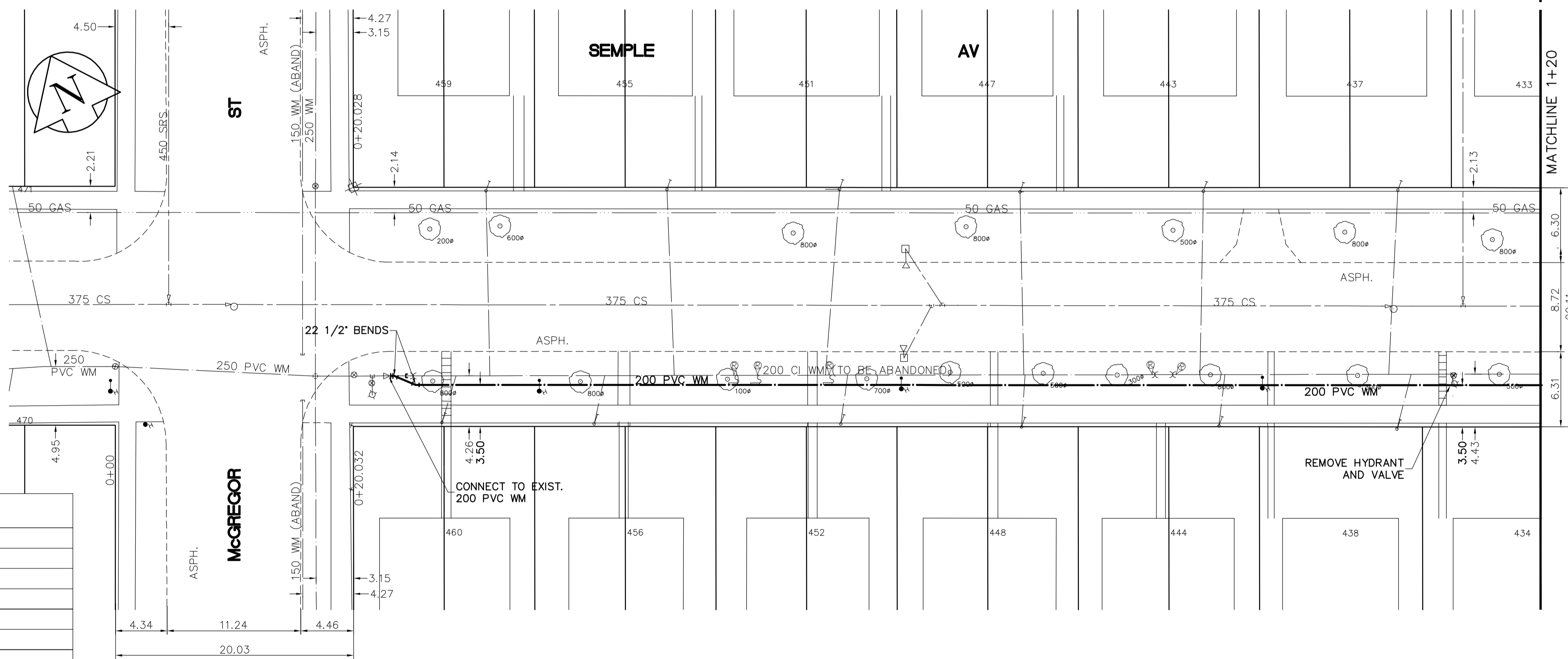
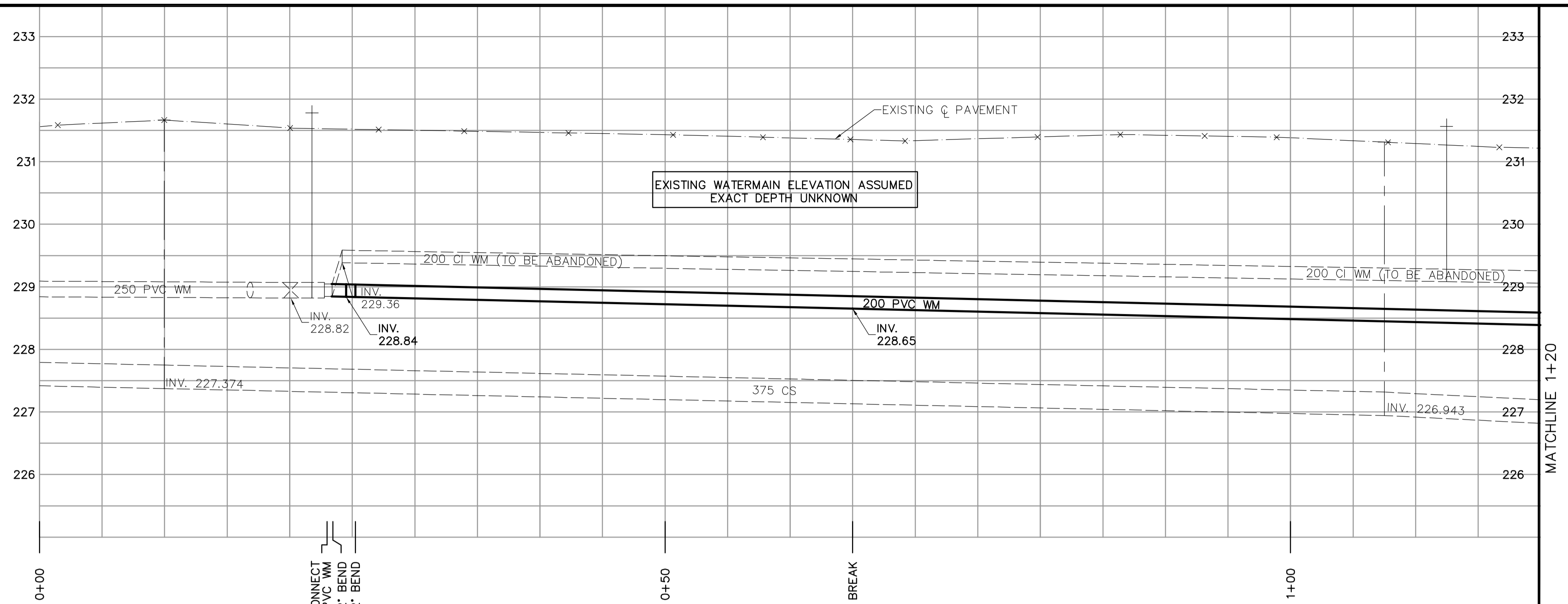


SHEET: G05-W02-A1 (11/2002)  
 FILE NAME: L:\work\85539\026-CAD\WWT\Comp\85539-C05.dwg  
 PLOTTED BY: michael.kochette  
 LAYOUT NAME: 85539-C05  
 Jan 16, 2005 - 8:46am

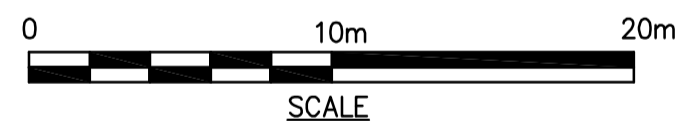
**CONSTRUCTION NOTES**

1. EXPOSE WATERMAIN CONNECTIONS AND CONFIRM INVERTS PRIOR TO CONSTRUCTION.
2. INSTALL WATERMAIN BY TRENCHLESS METHODS.
3. ALL MATERIALS SHALL CONFORM TO THE CITY OF WINNIPEG STANDARD CONSTRUCTION SPECIFICATIONS.
4. MINIMUM COVER TO TOP OF PROPOSED WATERMAIN SHALL BE 2.5m FROM STREET CENTERLINE.
5. INSTALL ALL HYDRANTS WITH FLANGE ELEVATION 50mm- 150mm ABOVE FINISHED GRADE.
6. REPLACE ALL EXISTING LEAD SERVICES FROM THE PROPOSED WATERMAIN TO PROPERTY LINE.
7. NOTIFY ALL AFFECTED RESIDENTS AND BUSINESSES 24 HOURS IN ADVANCE OF ANY WATER SHUTDOWN OR DISRUPTION OF SERVICE.
8. LOCATION OF PREVIOUS WATERMAIN BREAKS SHOWN THUS ⊕ IS APPROXIMATE AND FOR INFORMATION ONLY. NO GUARANTEE IS GIVEN TO THE COMPLETENESS OR ACCURACY OF THIS INFORMATION.
9. LOCATION OF WATER SERVICES SHOWN ON DRAWINGS ARE APPROXIMATE. THE CONTRACTOR SHALL FIELD LOCATE ALL WATER SERVICES PRIOR TO CONSTRUCTION.
10. ALL VALVES SHALL BE BLACK TOP (CLOCKWISE TO CLOSE).
11. BACKFILL UNDER OR WITHIN 1.0m OF PAVEMENTS, INCLUDING SIDEWALKS SHALL BE CLASS 3 BACKFILL EXCEPT AS NOTED. BACKFILL IN BOULEVARDS SHALL BE CLASS 5 BACKFILL.
12. RENEW LEAD SERVICES TO PROPERTY LINE.



**METRIC**

WHOLE NUMBERS INDICATE MILLIMETRES  
DECIMALIZED NUMBERS INDICATE METRES



ADDRESS	NATURE OF SERVICE	DISTANCE SC TO PROPERTY	SIZE	MATERIAL	POSITION OF SC (curb stop)	POSITION OF CC (corp)	COMMENTS
460 SEMPLE AV	RESIDENTIAL	0.2 m	19 mm	COPPER	Long: 7.6 m E of EL Short: 5.8 m W of EL	MCGREGGOR Long: 1.2 m E of S/C Short: 1.2 m E of S/C	
459 SEMPLE AV	RESIDENTIAL	0.3 m	19 mm	COPPER	Long: 11.3 m E of EL Short: 2.0 m W of EL	MCGREGGOR Long: 0.3 m E of S/C Short: 0.3 m E of S/C	
456 SEMPLE AV	RESIDENTIAL	0.2 m	19 mm	COPPER	Long: 20.4 m E of EL Short: 2.3 m E of WL	MCGREGGOR Long: 0.9 m E of S/C Short: 0.9 m E of S/C	
455 SEMPLE AV	RESIDENTIAL	0.2 m	19 mm	COPPER	Long: 26.5 m E of EL Short: 2.0 m W of EL	MCGREGGOR Long: 0.6 m E of S/C Short: 0.6 m E of S/C	
452 SEMPLE AV	RESIDENTIAL	0.2 m	19 mm	COPPER	Long: 41.1 m E of EL Short: 2.7 m W of EL	MCGREGGOR Long: 0.6 m E of S/C Short: 0.6 m E of S/C	
451 SEMPLE AV	RESIDENTIAL	0.2 m	19 mm	COPPER	Long: 41.1 m E of EL Short: 3.3 m W of EL	MCGREGGOR Long: 1.2 m W of S/C Short: 1.2 m W of S/C	
448 SEMPLE AV	RESIDENTIAL	0.0 m	19 mm	COPPER	Long: 56.4 m E of EL Short: 2.8 m W of EL	MCGREGGOR Long: 0.3 m E of S/C Short: 0.3 m E of S/C	
447 SEMPLE AV	RESIDENTIAL	0.3 m	19 mm	COPPER	Long: 56.4 m E of EL Short: 2.8 m W of EL	MCGREGGOR Long: 0.3 m E of S/C Short: 0.3 m E of S/C	
444 SEMPLE AV	RESIDENTIAL	0.2 m	19 mm	COPPER	Long: 73.2 m E of EL Short: 1.3 m W of EL	MCGREGGOR Long: 0.5 m E of S/C Short: 0.5 m E of S/C	
443 SEMPLE AV	RESIDENTIAL	0.3 m	19 mm	COPPER	Long: 71.9 m E of EL Short: 2.7 m W of EL	MCGREGGOR Long: 0.3 m W of S/C Short: 0.3 m W of S/C	
438 SEMPLE AV	RESIDENTIAL	0.2 m	19 mm	COPPER	Long: 88.1 m E of EL Short: 0.2 m W of EL	MCGREGGOR Long: 1.2 m E of S/C Short: 1.2 m E of S/C	
437 SEMPLE AV	RESIDENTIAL	0.3 m	19 mm	COPPER	Long: 88.4 m E of EL Short: 2.3 m W of EL	MCGREGGOR Long: 0.8 m W of S/C Short: 0.8 m W of S/C	
434 SEMPLE AV	RESIDENTIAL	0.0 m	19 mm	COPPER	Long: 79.2 m W of EL Short: 0.3 m W of EL	ANDREWS Long: 0.3 m E of S/C Short: 0.3 m E of S/C	
433 SEMPLE AV	RESIDENTIAL	0.0 m	19 mm	COPPER	Long: 81.4 m W of WL Short: 2.7 m W of EL	ANDREWS Long: 0.9 m E of S/C Short: 0.9 m E of S/C	

EXISTING	LEGEND - PLAN	PROPOSED	EXISTING	LEGEND - PLAN	PROPOSED	EXISTING	LEGEND - PROFILE	PROPOSED
	WATERMAIN			HYDRO			WATERMAIN	
	HYDRANT VALVE			TELEPHONE			HYDRANT VALVE	
	LAND DRAINAGE SEWER			CONCRETE			LAND DRAINAGE SEWER	
	WASTEWATER SEWER			PROPERTY LINE			WASTE WATER SEWER	
	MANHOLE			SURVEY BAR			Q PROFILE	
	CATCH BASIN			CURB STOP				
	CURB INLET			TREE				
	JUNCTIONS			ANODE				
	CULVERT			CONCRETE SIDEWALK				
	GAS			FENCE				

**LOCATION APPROVED UNDERGROUND STRUCTURES**

SUPV. U/G STRUCTURES DATE COMMITTEE

**NOTE:**

LOCATION OF UNDERGROUND STRUCTURES AS SHOWN ARE BASED ON THE BEST INFORMATION AVAILABLE. BUT NO GUARANTEE IS GIVEN THAT ALL EXISTING UTILITIES ARE SHOWN OR THAT THE GIVEN LOCATIONS ARE EXACT. CONFIRMATION OF EXISTENCE AND EXACT LOCATION OF ALL SERVICES MUST BE OBTAINED FROM THE INDIVIDUAL UTILITIES BEFORE PROCEEDING WITH CONSTRUCTION.

B.M. 13-041 N.W. Cor. KINGSBURY Ave. & ANDREWS St., 7.8 m N. of top of iron pipe, 3.8 m W. of C.L. Pkgs of ANDREWS ELEV. 230.982 St. & 3.2 m N. of C.L. Conc. of KINGSBURY Ave.

**EARTH TECH**  
A tyco INTERNATIONAL LTD. COMPANY  
Earth Tech (Canada) Inc. Winnipeg, Manitoba 204-477-5381

DESIGNED BY	GSK	CHECKED BY	KWF
DRAWN BY	MAF	APPROVED BY	
HOR. SCALE:	1:250	RELEASED FOR CONSTRUCTION BY:	K. ZUREK
VERTICAL SCALE:	1:50	DATE	2005/05/12
NO. REVISIONS		DATE	05/06/16

ENGINEER'S SEAL  
ORIGINAL SIGNED BY  
**K.W. FITCHETT**  
JUNE 16/05  
CONSULTANT DRAWING NO.  
85539-C05

**THE CITY OF WINNIPEG**  
Winnipeg WATER AND WASTE DEPARTMENT  
**2005 WATERMAIN RENEWALS CONTRACT 10**  
SEMPLA AVENUE MCGREGGOR STREET TO STATION 1+20  
SHEET OF 5 16  
CITY DRAWING NUMBER **D-8768**