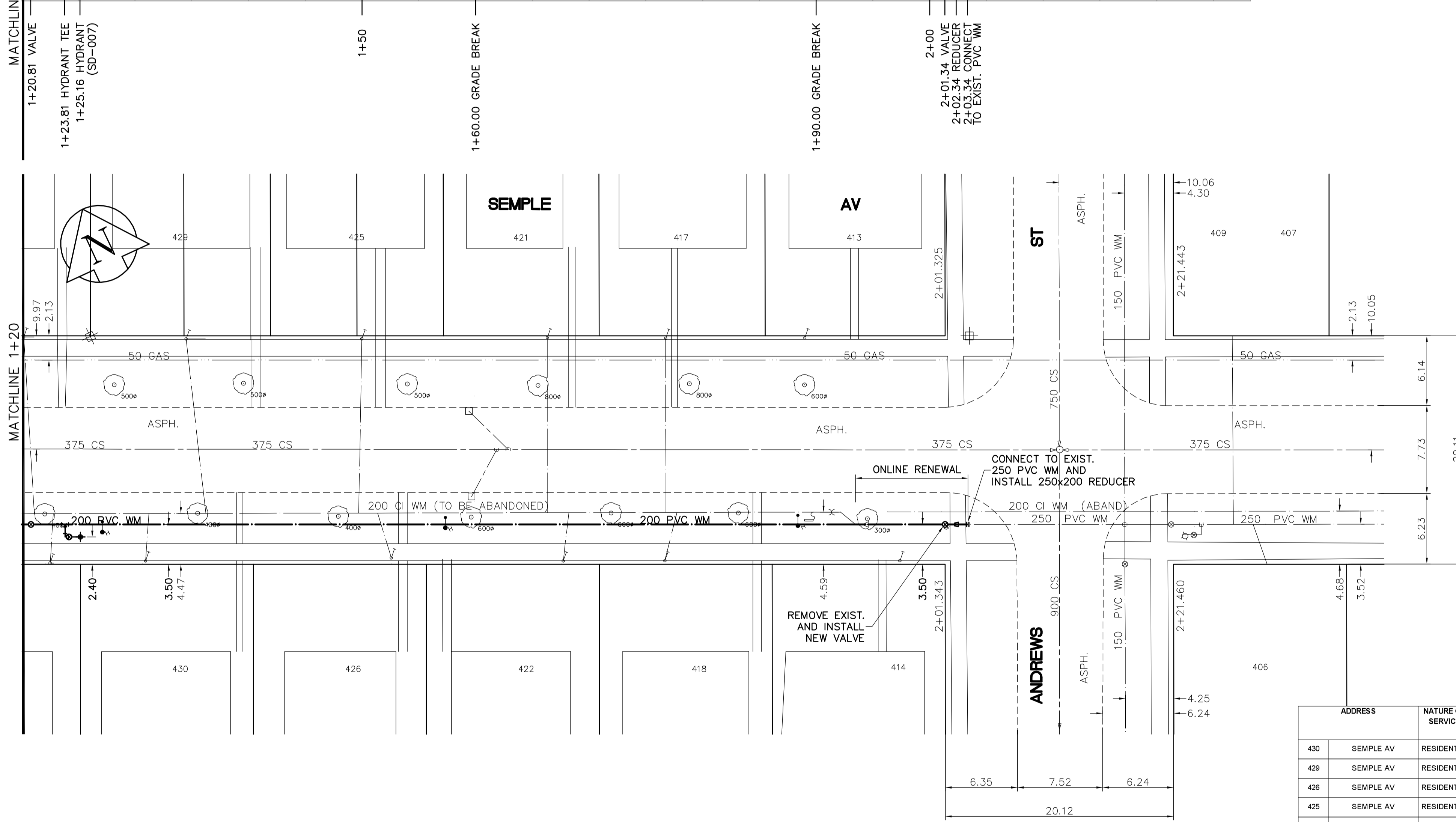
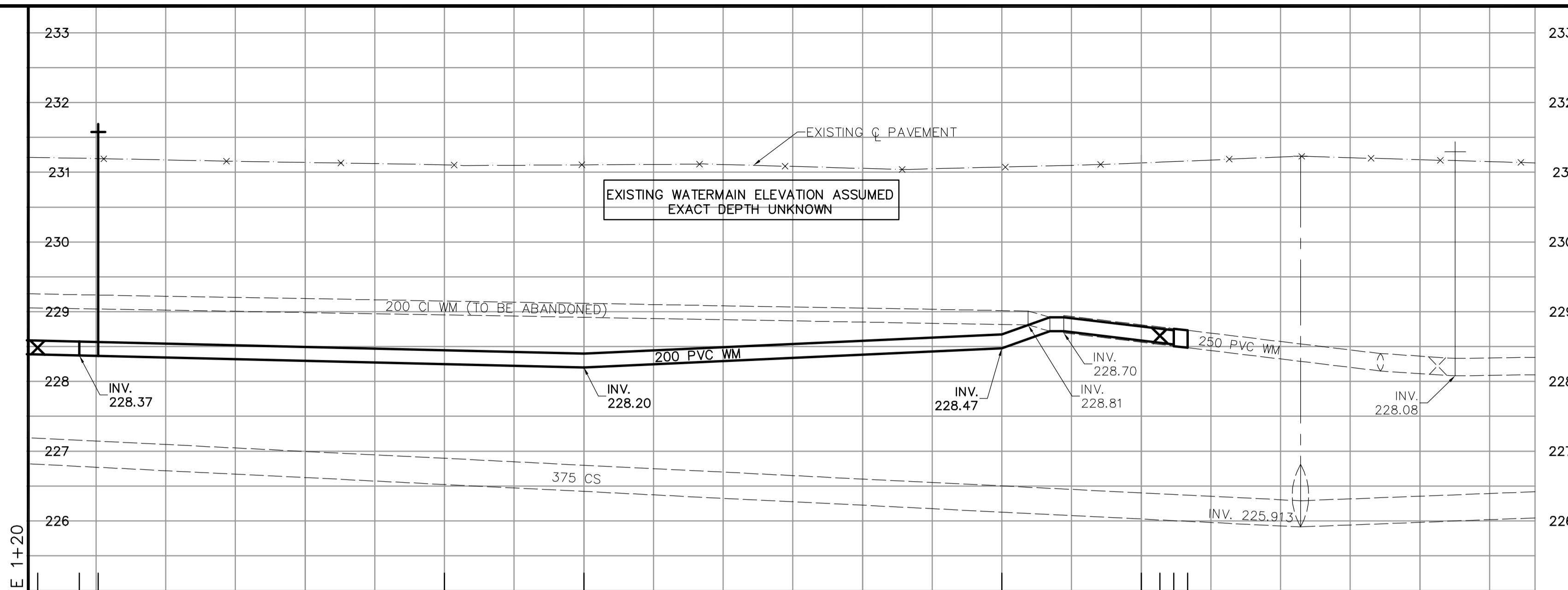


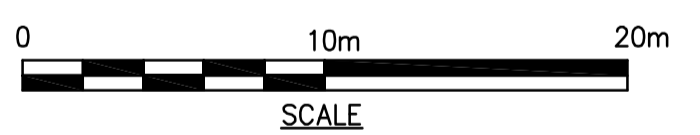
SHEET: G.W.-W.M.-A1 (11/2002)
 FILE NAME: L:\work\85539\026-CAD\WMT\Comp\85539-C06.dwg
 PLOTTED BY: mrosal\mrosal
 LAYOUT NAME: 85539-C06
 Jan 16, 2005 - 8:46am



- CONSTRUCTION NOTES**
1. EXPOSE WATERMAIN CONNECTIONS AND CONFIRM INVERTS PRIOR TO CONSTRUCTION.
 2. INSTALL WATERMAIN BY TRENCHLESS METHODS.
 3. ALL MATERIALS SHALL CONFORM TO THE CITY OF WINNIPEG STANDARD CONSTRUCTION SPECIFICATIONS.
 4. MINIMUM COVER TO TOP OF PROPOSED WATERMAIN SHALL BE 2.5m FROM STREET CENTERLINE.
 5. INSTALL ALL HYDRANTS WITH FLANGE ELEVATION 50mm- 150mm ABOVE FINISHED GRADE.
 6. REPLACE ALL EXISTING LEAD SERVICES FROM THE PROPOSED WATERMAIN TO PROPERTY LINE.
 7. NOTIFY ALL AFFECTED RESIDENTS AND BUSINESSES 24 HOURS IN ADVANCE OF ANY WATER SHUTDOWN OR DISRUPTION OF SERVICE.
 8. LOCATION OF PREVIOUS WATERMAIN BREAKS SHOWN THUS IS APPROXIMATE AND FOR INFORMATION ONLY. NO GUARANTEE IS GIVEN TO THE COMPLETENESS OR ACCURACY OF THIS INFORMATION.
 9. LOCATION OF WATER SERVICES SHOWN ON DRAWINGS ARE APPROXIMATE. THE CONTRACTOR SHALL FIELD LOCATE ALL WATER SERVICES PRIOR TO CONSTRUCTION.
 10. ALL VALVES SHALL BE BLACK TOP (CLOCKWISE TO CLOSE).
 11. BACKFILL UNDER OR WITHIN 1.0m OF PAVEMENTS, INCLUDING SIDEWALKS SHALL BE CLASS 3 BACKFILL EXCEPT AS NOTED. BACKFILL IN BOULEVARDS SHALL BE CLASS 5 BACKFILL.
 12. RENEW ALL LEAD SERVICES TO PROPERTY LINE.



METRIC
 WHOLE NUMBERS INDICATE MILLIMETRES
 DECIMALIZED NUMBERS INDICATE METRES



| ADDRESS | NATURE OF SERVICE | DISTANCE SC TO PROPERTY | SIZE | MATERIAL | POSITION OF SC (curb stop) | POSITION OF CC (corp) | COMMENTS: |
|---------------|-------------------|-------------------------|-------|----------|--|------------------------------------|-----------|
| 430 SEMPLE AV | RESIDENTIAL | 0.2 m | 19 mm | COPPER | Long: 70.7 m W of WL Short: 3.7 m E of WL | ANDREWS HOUSE Long: 0.3 m E of S/C | |
| 429 SEMPLE AV | RESIDENTIAL | 0.2 m | 19 mm | COPPER | Long: 67.1 m W of WL Short: 5.6 m W of WL | ANDREWS HOUSE Long: 1.7 m E of S/C | |
| 428 SEMPLE AV | RESIDENTIAL | 0.3 m | 19 mm | COPPER | Long: 48.8 m W of WL Short: 0.2 m W of EL | ANDREWS HOUSE Long: 1.2 m W of S/C | |
| 425 SEMPLE AV | RESIDENTIAL | 0.2 m | 19 mm | COPPER | Long: 51.5 m W of WL Short: 5.5 m W of EL | ANDREWS HOUSE Long: 0.3 m W of S/C | |
| 422 SEMPLE AV | RESIDENTIAL | 0.3 m | 19 mm | COPPER | Long: 33.8 m W of WL Short: 6.7 m W of EL | ANDREWS HOUSE Long: 0.5 m E of S/C | |
| 421 SEMPLE AV | RESIDENTIAL | 0.2 m | 19 mm | COPPER | Long: 36.1 m W of WL Short: 1.4 m W of EL | ANDREWS HOUSE Long: OPP of S/C | |
| 418 SEMPLE AV | RESIDENTIAL | 0.2 m | 19 mm | COPPER | Long: 24.7 m W of WL Short: 3.7 m E of WL | ANDREWS HOUSE Long: 1.1 m E of S/C | |
| 417 SEMPLE AV | RESIDENTIAL | 0.3 m | 19 mm | COPPER | Long: 24.7 m W of WL Short: 4.0 m E of WL | ANDREWS HOUSE Long: OPP of S/C | |
| 414 SEMPLE AV | RESIDENTIAL | 0.0 m | 19 mm | COPPER | Long: 4.0 m W of WL Short: 2.1 m W of EL | ANDREWS HOUSE Long: of | |
| 413 SEMPLE AV | RESIDENTIAL | 0.2 m | 19 mm | COPPER | Long: 12.2 m W of WL Short: 1.8 m E of WL | ANDREWS HOUSE Long: of | |

| EXISTING | LEGEND - PLAN | PROPOSED | EXISTING | LEGEND - PROFILE | PROPOSED |
|----------|---------------------|----------|----------|---------------------|----------|
| | WATERMAIN | | | WATERMAIN | |
| | HYDRANT VALVE | | | HYDRANT VALVE | |
| | LAND DRAINAGE SEWER | | | LAND DRAINAGE SEWER | |
| | WASTEWATER SEWER | | | WASTE WATER SEWER | |
| | MANHOLE | | | MANHOLE | |
| | CATCH BASIN | | | CATCH BASIN | |
| | CURB INLET | | | CURB INLET | |
| | JUNCTIONS | | | JUNCTIONS | |
| | CULVERT | | | CULVERT | |
| | GAS | | | GAS | |
| | HYDRO TELEPHONE | | | HYDRO TELEPHONE | |
| | CONCRETE | | | CONCRETE | |
| | ASPHALT | | | ASPHALT | |
| | PROPERTY LINE | | | PROPERTY LINE | |
| | SURVEY BAR | | | SURVEY BAR | |
| | CURB STOP | | | CURB STOP | |
| | TREE | | | TREE | |
| | ANODE | | | ANODE | |
| | CONCRETE SIDEWALK | | | CONCRETE SIDEWALK | |
| | FENCE | | | FENCE | |

LOCATION APPROVED UNDERGROUND STRUCTURES

SUPV. U/G STRUCTURES DATE COMMITTEE

NOTE:
 LOCATION OF UNDERGROUND STRUCTURES AS SHOWN ARE BASED ON THE BEST INFORMATION AVAILABLE. BUT NO GUARANTEE IS GIVEN THAT ALL EXISTING UTILITIES ARE SHOWN OR THAT THE GIVEN LOCATIONS ARE EXACT. CONFIRMATION OF EXISTENCE AND EXACT LOCATION OF ALL SERVICES MUST BE OBTAINED FROM THE INDIVIDUAL UTILITIES BEFORE PROCEEDING WITH CONSTRUCTION.

B.M. 13-041 N.W. Cor. KINGSBURY Ave. & ANDREWS St., 7.8 m N. of top of iron pipe, 7.8 m N. of C.L. Part of ANDREWS ELEV. 230.982 St. & 3.2 m N. of C.L. Conc. of KINGSBURY Ave.

EARTH TECH
 A tyco INTERNATIONAL LTD. COMPANY
 Earth Tech (Canada) Inc. Winnipeg, Manitoba 204-477-5381

DESIGNED BY: GSK
 CHECKED BY: KWF

DRAWN BY: MAF
 APPROVED BY:

HOR. SCALE: 1:250
 VERTICAL SCALE: 1:50

RELEASED FOR CONSTRUCTION BY: K. ZUREK

NO. REVISIONS DATE BY

0 ISSUED FOR TENDER 05/06/16 GSK
 A ISSUED FOR REVIEW 05/06/13 GSK

DATE 2005/05/12 DATE 05/06/16

ENGINEER'S SEAL

ORIGINAL SIGNED BY
 K.W. FITCHETT
 JUNE 16/05

CONSULTANT DRAWING NO.
 85539-C06

THE CITY OF WINNIPEG
 Winnipeg WATER AND WASTE DEPARTMENT

2005 WATERMAIN RENEWALS CONTRACT 10

SEMPLE AVENUE STATION 14-20 TO ANDREWS STREET

SHEET 6 OF 16
 CITY DRAWING NUMBER D-8769