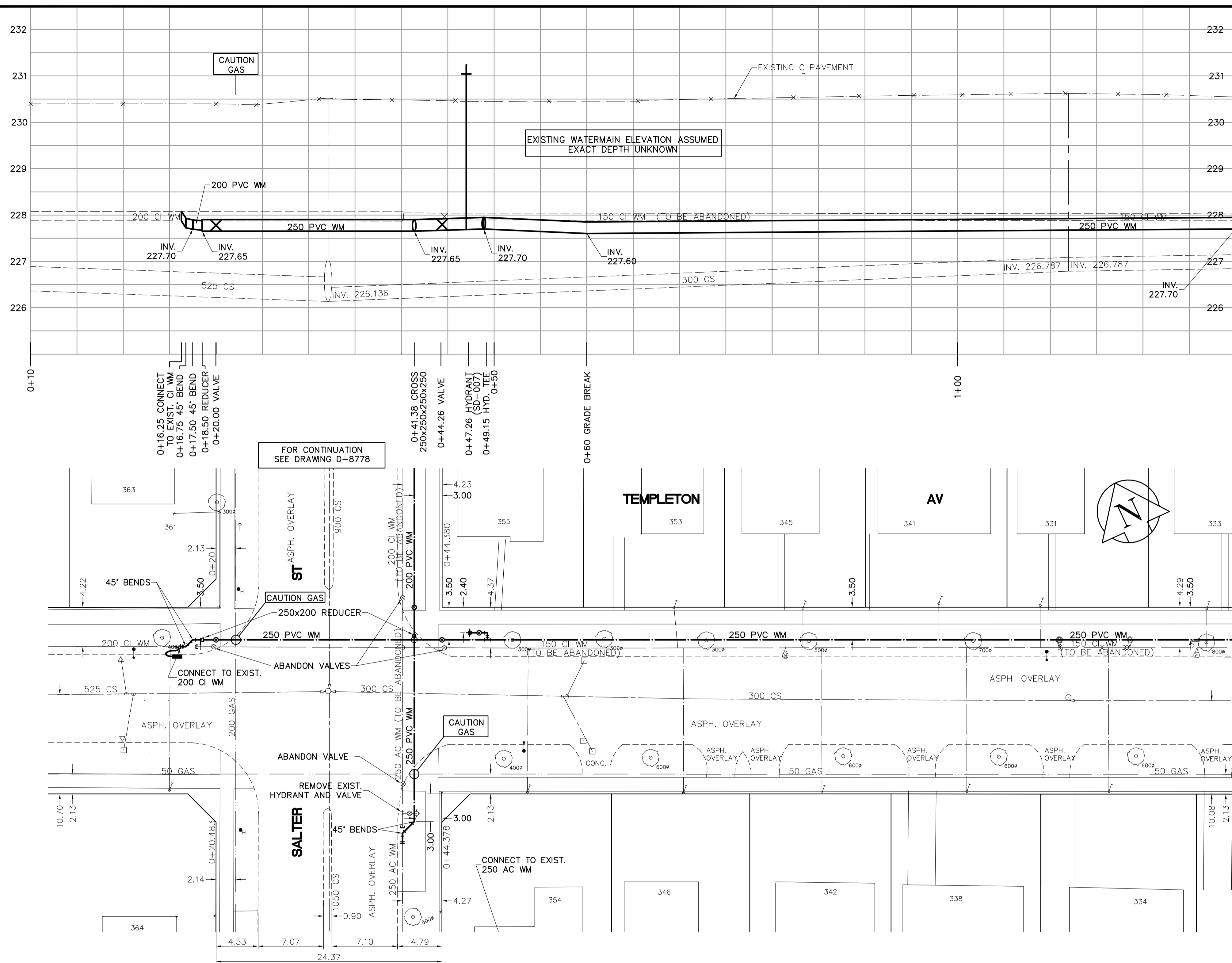
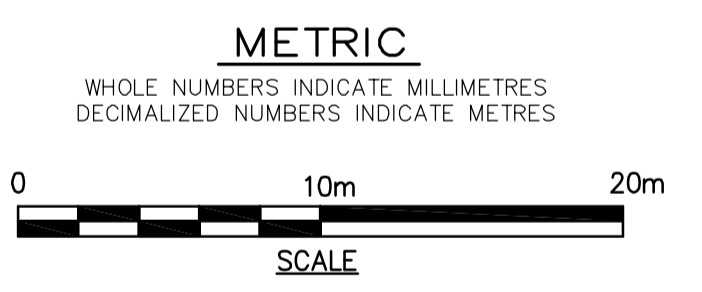


SHEET: GOW-WM-A1 (11/2002) FILE NAME: L:\work\85539\026-CAD\WWT\Comp\85539-C13.dwg PLOTTED BY: mrosal\mrosal LAYOUT NAME: 85539-C13 Jan 16, 2005 - 8:51am



MATCHLINE 1+30

- CONSTRUCTION NOTES**
1. EXPOSE WATERMAIN CONNECTIONS AND CONFIRM INVERTS PRIOR TO CONSTRUCTION.
 2. INSTALL WATERMAIN BY TRENCHLESS METHODS.
 3. ALL MATERIALS SHALL CONFORM TO THE CITY OF WINNIPEG STANDARD CONSTRUCTION SPECIFICATIONS.
 4. MINIMUM COVER TO TOP OF PROPOSED WATERMAIN SHALL BE 2.5m FROM STREET CENTERLINE.
 5. INSTALL ALL HYDRANTS WITH FLANGE ELEVATION 50mm- 150mm ABOVE FINISHED GRADE.
 6. REPLACE ALL EXISTING LEAD SERVICES FROM THE PROPOSED WATERMAIN TO PROPERTY LINE.
 7. NOTIFY ALL AFFECTED RESIDENTS AND BUSINESSES 24 HOURS IN ADVANCE OF ANY WATER SHUTDOWN OR DISRUPTION OF SERVICE.
 8. LOCATION OF PREVIOUS WATERMAIN BREAKS SHOWN THUS IS APPROXIMATE AND FOR INFORMATION ONLY. NO GUARANTEE IS GIVEN TO THE COMPLETENESS OR ACCURACY OF THIS INFORMATION.
 9. LOCATION OF WATER SERVICES SHOWN ON DRAWINGS ARE APPROXIMATE. THE CONTRACTOR SHALL FIELD LOCATE ALL WATER SERVICES PRIOR TO CONSTRUCTION.
 10. ALL VALVES SHALL BE BLACK TOP (CLOCKWISE TO CLOSE).
 11. BACKFILL UNDER OR WITHIN 1.0m OF PAVEMENTS, INCLUDING SIDEWALKS SHALL BE CLASS 3 BACKFILL EXCEPT AS NOTED. BACKFILL IN BOULEVARDS SHALL BE CLASS 5 BACKFILL.
 12. RENEW ALL LEAD SERVICES TO PROPERTY LINE.



ADDRESS	NATURE OF SERVICE	DISTANCE SC TO PROPERTY	SIZE	MATERIAL	POSITION OF SC (curb stop)	POSITION OF CC (corp)	COMMENTS
363	TEMPLETON AV	RESIDENTIAL	0.0 m	19 mm	COPPER	Long: 5.3 m W of EL Short: 0.9 m W of EL	SALTER Long: of DUPLX Short: of
361	TEMPLETON AV	RESIDENTIAL	0.0 m	19 mm	COPPER	Long: 5.5 m W of WL Short: 0.8 m W of EL	SALTER Long: of DUPLX Short: of
355	TEMPLETON AV	RESIDENTIAL	0.0 m	19 mm	COPPER	Long: of Short: of	SALTER Long: of DUPLX Short: of
354	TEMPLETON AV	RESIDENTIAL	0.2 m	19 mm	COPPER	Long: 9.3 m E of EL Short: 5.5 m E of WL	SALTER Long: of HOUSE Short: of
353	TEMPLETON AV	RESIDENTIAL	0.0 m	19 mm	COPPER	Long: 25.3 m E of EL Short: 3.4 m W of EL	SALTER Long: of HOUSE Short: of
346	TEMPLETON AV	RESIDENTIAL	0.2 m	19 mm	COPPER	Long: 26.4 m E of EL Short: 1.7 m W of EL	SALTER Long: 0.4 m E of S/C HOUSE Short: of
345	TEMPLETON AV	RESIDENTIAL	0.2 m	19 mm	COPPER	Long: 39.2 m E of EL Short: 2.0 m W of EL	SALTER Long: of HOUSE Short: of

ADDRESS	NATURE OF SERVICE	DISTANCE SC TO PROPERTY	SIZE	MATERIAL	POSITION OF SC (curb stop)	POSITION OF CC (corp)	COMMENTS
342	TEMPLETON AV	RESIDENTIAL	0.2 m	19 mm	COPPER	Long: 41.3 m E of EL Short: 6.0 m W of EL	SALTER Long: of HOUSE Short: of
341	TEMPLETON AV	RESIDENTIAL	0.3 m	19 mm	COPPER	Long: 53.8 m E of EL Short: 5.9 m W of EL	SALTER Long: of HOUSE Short: of
338	TEMPLETON AV	RESIDENTIAL	0.0 m	19 mm	COPPER	Long: 57.2 m E of EL Short: 7.0 m E of WL	SALTER Long: of HOUSE Short: of
334	TEMPLETON AV	RESIDENTIAL	0.0 m	19 mm	COPPER	Long: 30.9 m N of 1ST HYD N Short: 4.1 m E of WL	SALTER Long: of HOUSE Short: of
333	TEMPLETON AV	RESIDENTIAL	0.3 m	19 mm	COPPER	Long: 38.4 m W of 1ST HYD E Short: 2.4 m E of WL	SALTER Long: of HOUSE Short: of
364	TEMPLETON AV	RESIDENTIAL	0.2 m	19 mm	COPPER	Long: 5.2 m W of WL Short: 0.5 m W of EL	SALTER Long: of HOUSE Short: of

EXISTING	LEGEND - PLAN	PROPOSED	EXISTING	LEGEND - PLAN	PROPOSED	EXISTING	LEGEND - PROFILE	PROPOSED
	WATERMAIN			HYDRANT			HYDRO TELEPHONE	
	VALVE			CONCRETE ASPHALT			PROPERTY LINE	
	LAND DRAINAGE SEWER			WASTE WATER SEWER			SURVEY BAR	
	MANHOLE			CATCH BASIN			CURB STOP	
	CURB INLET			TREE			ANODE	
	JUNCTIONS			CONCRETE SIDEWALK			FENCE	
	CULVERT			GAS				

LOCATION APPROVED UNDERGROUND STRUCTURES

SUPV. U/G STRUCTURES DATE COMMITTEE

NOTE:
LOCATION OF UNDERGROUND STRUCTURES AS SHOWN ARE BASED ON THE BEST INFORMATION AVAILABLE. BUT NO GUARANTEE IS GIVEN THAT ALL EXISTING UTILITIES ARE SHOWN OR THAT THE GIVEN LOCATIONS ARE EXACT. CONFIRMATION OF EXISTENCE AND EXACT LOCATION OF ALL SERVICES MUST BE OBTAINED FROM THE INDIVIDUAL UTILITIES BEFORE PROCEEDING WITH CONSTRUCTION.

B.M. 13-036 S.W. Cor. TEMPLETON Ave. and SALTER St., 10m on top of 0.00 m dia. x 2.4 m iron pipe, 3.8 m E. of ELEV. 230.444

NO.	REVISIONS	DATE	BY
0	ISSUED FOR TENDER	05/06/16	GSK
A	ISSUED FOR REVIEW	05/06/13	GSK

EARTH TECH
A tyco INTERNATIONAL LTD. COMPANY
Earth Tech (Canada) Inc. Winnipeg, Manitoba 204-477-5381

DESIGNED BY: GSK
CHECKED BY: KWF

DRAWN BY: MAF
APPROVED BY:

HOR. SCALE: 1:250
VERTICAL SCALE: 1:50

RELEASED FOR CONSTRUCTION BY: K. ZUREK

DATE: 2005/05/12 DATE: 05/06/16

ENGINEER'S SEAL

ORIGINAL SIGNED BY
K.W. FITCHETT
JUNE 16/05

CONSULTANT DRAWING NO.
85539-C13

THE CITY OF WINNIPEG
Winnipeg WATER AND WASTE DEPARTMENT

2005 WATERMAIN RENEWALS CONTRACT 10

TEMPLETON AVENUE
SALTER STREET TO
STATION 1+30

SHEET OF
13 OF 16

CITY DRAWING NUMBER
D-8776