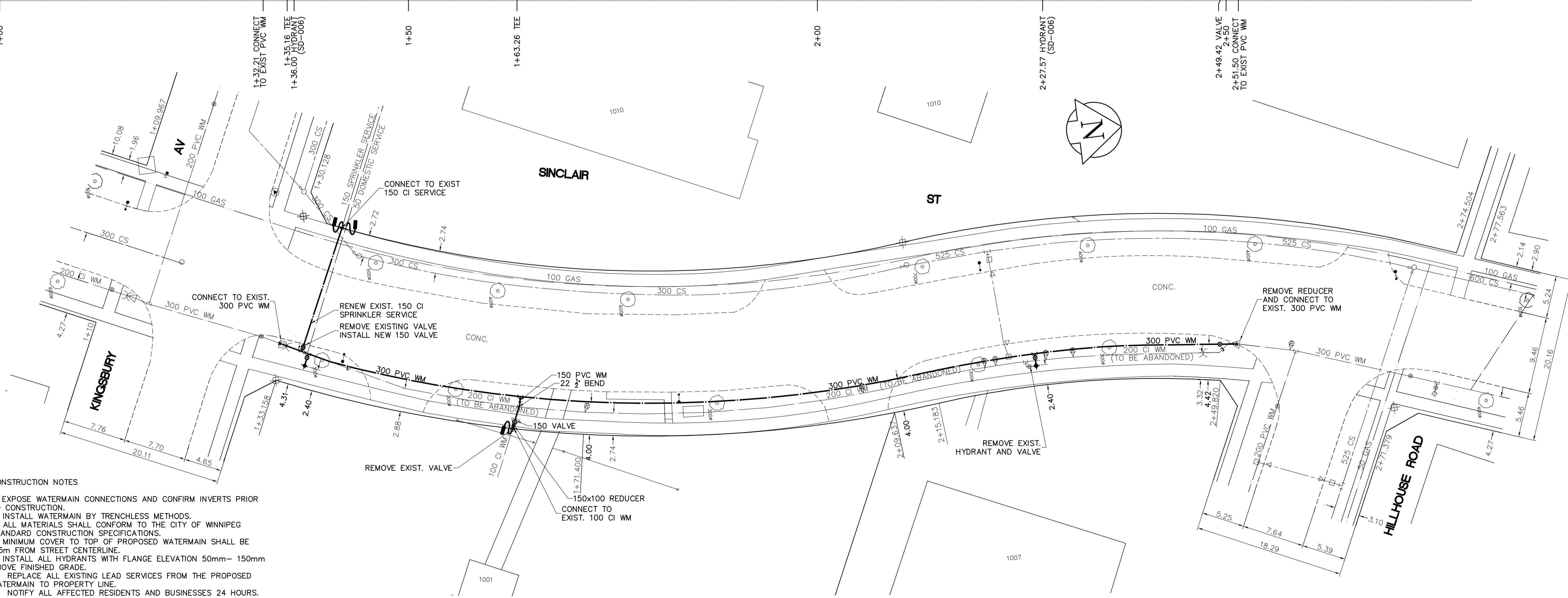
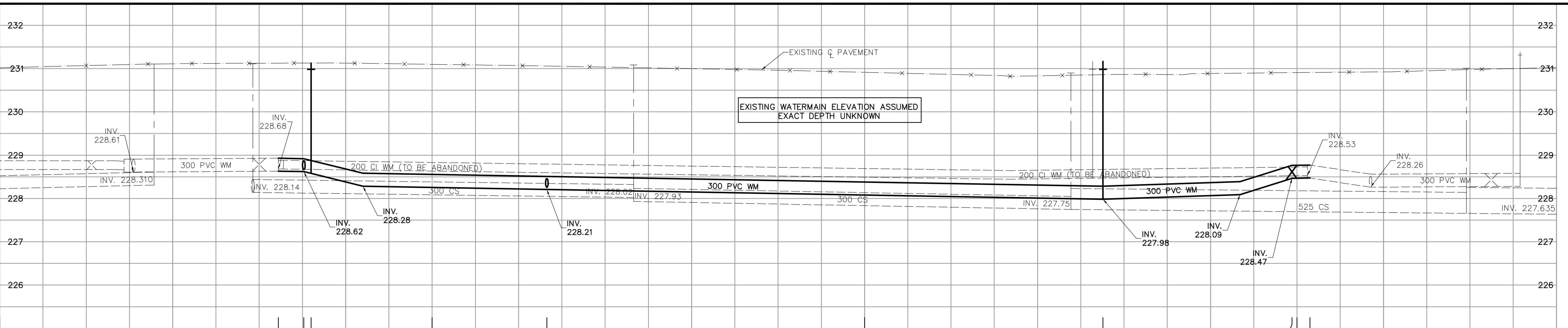
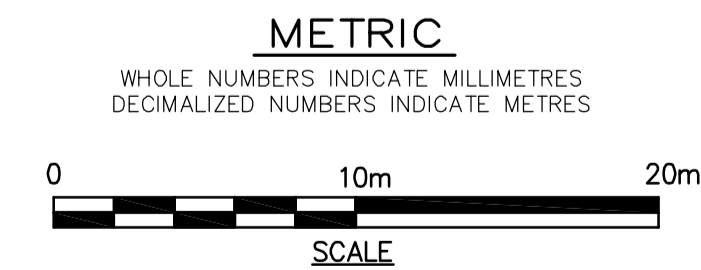


SHEET: G.W.-W.M.-A1 (11/2002)  
 FILE NAME: L:\wms\85539\026-CAD\WMT\Comp\85539-C16.dwg  
 LAYOUT NAME: 85539-C16  
 PLOTTED BY: mohamed.ikheiteh  
 Jan 16, 2005 - 8:53am



- CONSTRUCTION NOTES**
1. EXPOSE WATERMAIN CONNECTIONS AND CONFIRM INVERTS PRIOR TO CONSTRUCTION.
  2. INSTALL WATERMAIN BY TRENCHLESS METHODS.
  3. ALL MATERIALS SHALL CONFORM TO THE CITY OF WINNIPEG STANDARD CONSTRUCTION SPECIFICATIONS.
  4. MINIMUM COVER TO TOP OF PROPOSED WATERMAIN SHALL BE 2.5m FROM STREET CENTERLINE.
  5. INSTALL ALL HYDRANTS WITH FLANGE ELEVATION 50mm - 150mm ABOVE FINISHED GRADE.
  6. REPLACE ALL EXISTING LEAD SERVICES FROM THE PROPOSED WATERMAIN TO PROPERTY LINE.
  7. NOTIFY ALL AFFECTED RESIDENTS AND BUSINESSES 24 HOURS IN ADVANCE OF ANY WATER SHUTDOWN OR DISRUPTION OF SERVICE.
  8. LOCATION OF PREVIOUS WATERMAIN BREAKS SHOWN THUS ⊗ IS APPROXIMATE AND FOR INFORMATION ONLY. NO GUARANTEE IS GIVEN TO THE COMPLETENESS OR ACCURACY OF THIS INFORMATION.
  9. LOCATION OF WATER SERVICES SHOWN ON DRAWINGS ARE APPROXIMATE. THE CONTRACTOR SHALL FIELD LOCATE ALL WATER SERVICES PRIOR TO CONSTRUCTION.
  10. ALL VALVES SHALL BE BLACK TOP (CLOCKWISE TO CLOSE).
  11. BACKFILL UNDER OR WITHIN 1.0m OF PAVEMENTS, INCLUDING SIDEWALKS SHALL BE CLASS 3 BACKFILL EXCEPT AS NOTED. BACKFILL IN BOULEVARDS SHALL BE CLASS 5 BACKFILL.
  12. RENEW ALL LEAD SERVICES TO PROPERTY LINE.

**Certificate of Authorization**  
 Earth Tech Canada Inc.  
 No. 730 Expiry: April 30, 2006



ADDRESS	NATURE OF SERVICE	DISTANCE SC TO PROPERTY	SIZE	MATERIAL	POSITION OF SC (curb stop)	POSITION OF CC (corp)	COMMENTS
1010 SINCLAIR ST	SPRINKLER	0.7 m To Main	150 mm	CI	Long: 4.9 m N of SL Short: 9.7 m S of SL	KINGSBURY BLDG	Long: 9.7 m S of SL Short: OPP of SC
1010 SINCLAIR ST	RESIDENTIAL	15.8 m	50 mm	COPPER	Long: 5.4 m N of NL Short: 2.4 m S of SL	KINGSBURY BLDG	Long: 5.4 m N of NL Short: OPP of SC
1007 SINCLAIR ST	COMMERCIAL	3.4 m	25 mm	COPPER	Long: 13.3 m W of WL Short: 2.5 m W of SL	TANOAK	Long: 13.3 m W of WL Short: 2.5 m W of SL
1001 SINCLAIR ST	RESIDENTIAL	0.2 m	100 mm	CI	Long: 32.9 m N of NL Short: 28.8 m N of SL	KINGSBURY BLDG	Long: 32.9 m N of NL Short: 28.8 m N of SL

EXISTING	LEGEND - PLAN	PROPOSED	EXISTING	LEGEND - PROFILE	PROPOSED
150 mm W.M.	WATERMAIN	150 mm W.M.	150 mm W.M.	WATERMAIN	150 mm W.M.
Hydrant	HYDRANT	Hydrant	Hydrant	HYDRANT	Hydrant
Valve	VALVE	Valve	Valve	VALVE	Valve
300mm L.D.S.	LAND DRAINAGE SEWER	300mm L.D.S.	300mm L.D.S.	LAND DRAINAGE SEWER	300mm L.D.S.
250mm W.W.S.	WASTEWATER SEWER	250mm W.W.S.	250mm W.W.S.	WASTE WATER SEWER	250mm W.W.S.
Manhole	MANHOLE	Manhole	Manhole	MANHOLE	Manhole
Catch Basin	CATCH BASIN	Catch Basin	Catch Basin	CATCH BASIN	Catch Basin
Curb Inlet	CURB INLET	Curb Inlet	Curb Inlet	CURB INLET	Curb Inlet
Junctions	JUNCTIONS	Junctions	Junctions	JUNCTIONS	Junctions
Culvert	CULVERT	Culvert	Culvert	CULVERT	Culvert
Gas	GAS	Gas	Gas	GAS	Gas
Hydro	HYDRO	Hydro	Hydro	HYDRO	Hydro
Telephone	TELEPHONE	Telephone	Telephone	TELEPHONE	Telephone
Concrete	CONCRETE	Concrete	Concrete	CONCRETE	Concrete
Asphalt	ASPHALT	Asphalt	Asphalt	ASPHALT	Asphalt
Property Line	PROPERTY LINE	Property Line	Property Line	PROPERTY LINE	Property Line
Survey Bar	SURVEY BAR	Survey Bar	Survey Bar	SURVEY BAR	Survey Bar
Curb Stop	CURB STOP	Curb Stop	Curb Stop	CURB STOP	Curb Stop
Tree	TREE	Tree	Tree	TREE	Tree
Anode	ANODE	Anode	Anode	ANODE	Anode
Concrete Sidewalk	CONCRETE SIDEWALK	Concrete Sidewalk	Concrete Sidewalk	CONCRETE SIDEWALK	Concrete Sidewalk
Fence	FENCE	Fence	Fence	FENCE	Fence

**LOCATION APPROVED UNDERGROUND STRUCTURES**

SUPV. U/G STRUCTURES DATE COMMITTEE

**NOTE:**  
LOCATION OF UNDERGROUND STRUCTURES AS SHOWN ARE BASED ON THE BEST INFORMATION AVAILABLE. BUT NO GUARANTEE IS GIVEN THAT ALL EXISTING UTILITIES ARE SHOWN OR THAT THE GIVEN LOCATIONS ARE EXACT. CONFIRMATION OF EXISTENCE AND EXACT LOCATION OF ALL SERVICES MUST BE OBTAINED FROM THE INDIVIDUAL UTILITIES BEFORE PROCEEDING WITH CONSTRUCTION.

**EARTH TECH**

A tyco INTERNATIONAL LTD. COMPANY  
Earth Tech (Canada) Inc. Winnipeg, Manitoba 204-477-5381

DESIGNED BY: GSK	CHECKED BY: KWF
DRAWN BY: MAF	APPROVED BY:
HOR. SCALE: 1:250	RELEASED FOR CONSTRUCTION BY: K. ZUREK
VERTICAL SCALE: 1:50	DATE: 05/06/16

ENGINEER'S SEAL

ORIGINAL SIGNED BY  
**K.W. FITCHETT**  
JUNE 16/05

CONSULTANT DRAWING NO.  
85539-C16

**THE CITY OF WINNIPEG**  
Winnipeg WATER AND WASTE DEPARTMENT

**2005 WATERMAIN RENEWALS CONTRACT 10**

SINCLAIR STREET  
KINGSBURY AVENUE TO  
HILLHOUSE ROAD

SHEET OF  
16 OF 16  
CITY DRAWING NUMBER  
**D-8779**