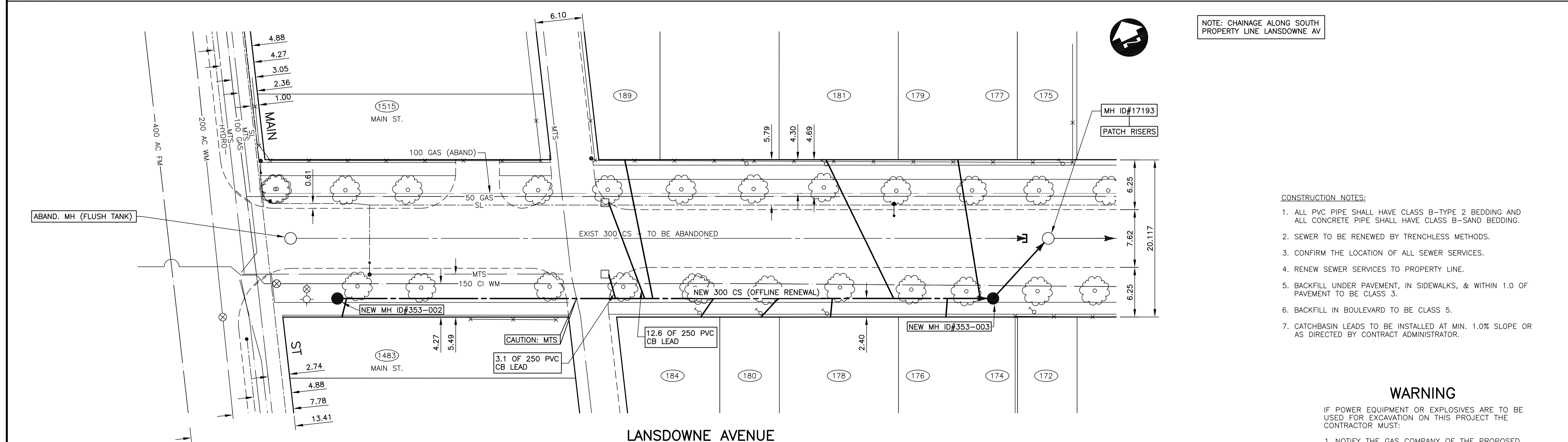


SEWER SERVICE INFORMATION (ID #17191) *

DISTANCE FROM MH AT MAIN ST (EPL) (MH ID #17192)	
4.2 E	SERVICE CONNECTION S
9.0 E	SERVICE CONNECTION S
38.7 E	SERVICE CONNECTION S
41.3 E	SERVICE CONNECTION N
42.0 E	SERVICE CONNECTION S
45.7 E	SERVICE CONNECTION N
55.0 E	SERVICE CONNECTION S
61.2 E	SERVICE CONNECTION N
61.9 E	SERVICE CONNECTION S
69.3 E	SERVICE CONNECTION S
75.8 E	SERVICE CONNECTION N
85.1 E	SERVICE CONNECTION S
91.9 E	SERVICE CONNECTION N

* - INFORMATION FROM SEWER VIDEO INSPECTION

SEWER SERVICE INFORMATION		
ADDRESS	SIZE	R. DIST JUNCTION TIE
1483 MAIN	-	NO INFO AVAILABLE
1515 MAIN	-	NO INFO AVAILABLE
189 LANSDOWNE	-	0.6 E OF WPL
184 LANSDOWNE	-	7.6 W OF EPL
181 LANSDOWNE	-	NO INFO AVAILABLE
180 LANSDOWNE	-	1.2 W OF EPL
179/177 LANSDOWNE	-	NO INFO AVAILABLE
178 LANSDOWNE	-	NO INFO AVAILABLE
176/174 LANSDOWNE	-	NO INFO AVAILABLE
175 LANSDOWNE	-	NO INFO AVAILABLE
172 LANSDOWNE	-	NO INFO AVAILABLE



NOTE: CHAINAGE ALONG SOUTH PROPERTY LINE LANSDOWNE AV

- CONSTRUCTION NOTES:
1. ALL PVC PIPE SHALL HAVE CLASS B-TYPE 2 BEDDING AND ALL CONCRETE PIPE SHALL HAVE CLASS B-SAND BEDDING.
 2. SEWER TO BE RENEWED BY TRENCHLESS METHODS.
 3. CONFIRM THE LOCATION OF ALL SEWER SERVICES.
 4. RENEW SEWER SERVICES TO PROPERTY LINE.
 5. BACKFILL UNDER PAVEMENT, IN SIDEWALKS, & WITHIN 1.0 OF PAVEMENT TO BE CLASS 3.
 6. BACKFILL IN BOULEVARD TO BE CLASS 5.
 7. CATCHBASIN LEADS TO BE INSTALLED AT MIN. 1.0% SLOPE OR AS DIRECTED BY CONTRACT ADMINISTRATOR.

WARNING

IF POWER EQUIPMENT OR EXPLOSIVES ARE TO BE USED FOR EXCAVATION ON THIS PROJECT THE CONTRACTOR MUST:

1. NOTIFY THE GAS COMPANY OF THE PROPOSED LOCATION OF EXCAVATION.
2. TAKE PRECAUTION TO AVOID DAMAGE TO GAS COMPANY INSTALLATIONS SEE PROVINCIAL REGULATION 210/72 FOR DETAILS

METRIC

WHOLE NUMBERS INDICATE MILLIMETRES
DECIMALIZED NUMBERS INDICATE METRES

150 mm W.M.	WATERMAIN	180 mm W.M.	HYDRO	150 mm W.M.	WATERMAIN	150 mm W.M.	WATERMAIN	UNDERGROUND STRUCTURES	B.M. ELEV.	DESIGNED BY S.C.C.	ENGINEER'S SEAL			
Hydrant	Valve	M.T.S.	CONCRETE	Hydrant	Valve	Hydrant	Valve							
300 mm L.O.S.	LAND DRAINAGE SEWER	300 mm L.O.S.	ASPHALT	300 mm L.O.S.	LAND DRAINAGE SEWER	300 mm L.O.S.	LAND DRAINAGE SEWER	SUPV. U/G STRUCTURES COMMITTEE DATE NOTE: LOCATION OF UNDERGROUND STRUCTURES AS SHOWN ARE BASED ON THE BEST INFORMATION AVAILABLE. BUT NO GUARANTEE IS GIVEN THAT ALL EXISTING UTILITIES ARE SHOWN OR THAT THE GIVEN LOCATIONS ARE EXACT. CONFIRMATION OF EXISTENCE AND EXACT LOCATION OF ALL SERVICES MUST BE OBTAINED FROM THE INDIVIDUAL UTILITIES BEFORE PROCEEDING WITH CONSTRUCTION.	2 ISSUED FOR TENDER 07/05/05 S.C.C. 1 SUBMITTED TO W&W FOR REVIEW 06/29/05 S.C.C.	CHECKED BY P.M.K. APPROVED BY		2005 COMBINED SEWER RENEWALS AND REPAIRS, CONTRACT 15 LANSDOWNE AVENUE MH AT MAIN ST (E. PL) TO 1ST MH E. OF MAIN ST		
250 mm W.W.S.	WASTE WATER SEWER	250 mm W.W.S.	PROPERTY LINE	250 mm W.W.S.	WASTE WATER SEWER	250 mm W.W.S.	WASTE WATER SEWER							
Manhole	Catch Basin	Manhole	SURVEY BAR	Manhole	Catch Basin	Manhole	Catch Basin	HOR. SCALE 1:250 VERTICAL 1:50	RELEASED FOR CONSTRUCTION	CONSULTANT DRAWING NO. 054573-02	CITY DRAWING NUMBER 05596 SHEET 02 OF 21	BID OPPORTUNITY 353-2005		
Junctions	Culvert	Junctions	BUILDING	Junctions	Culvert	Junctions	Culvert							
Existing	Legend-Plan	Proposed	Existing	Legend-Plan	Proposed	Existing	Legend-Profile	Proposed	NO. REVISIONS	DATE	BY	DATE	MAY 2005	DATE